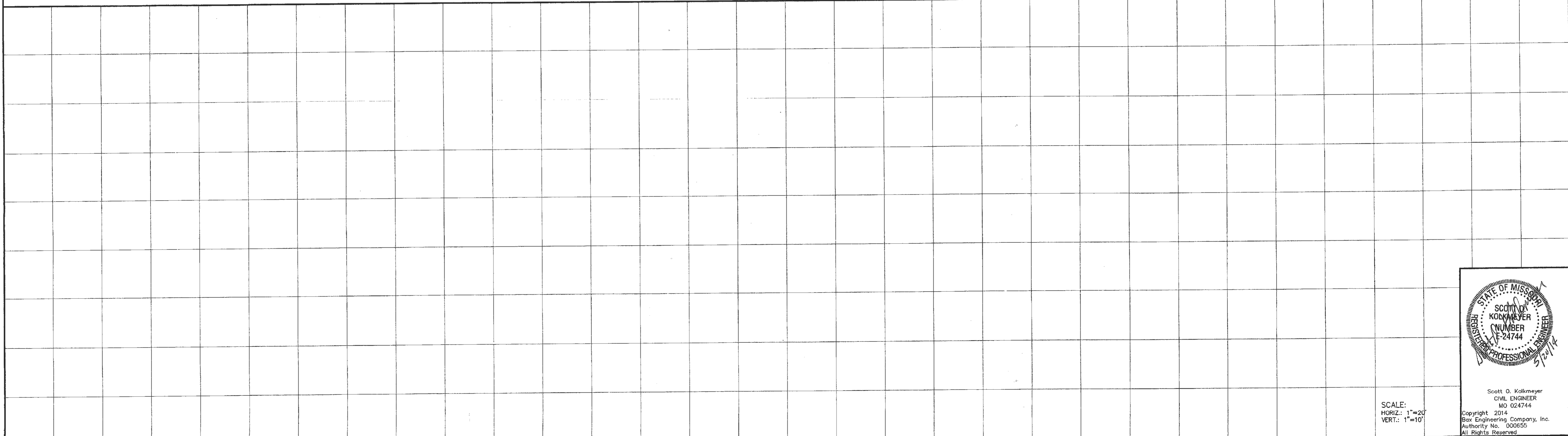
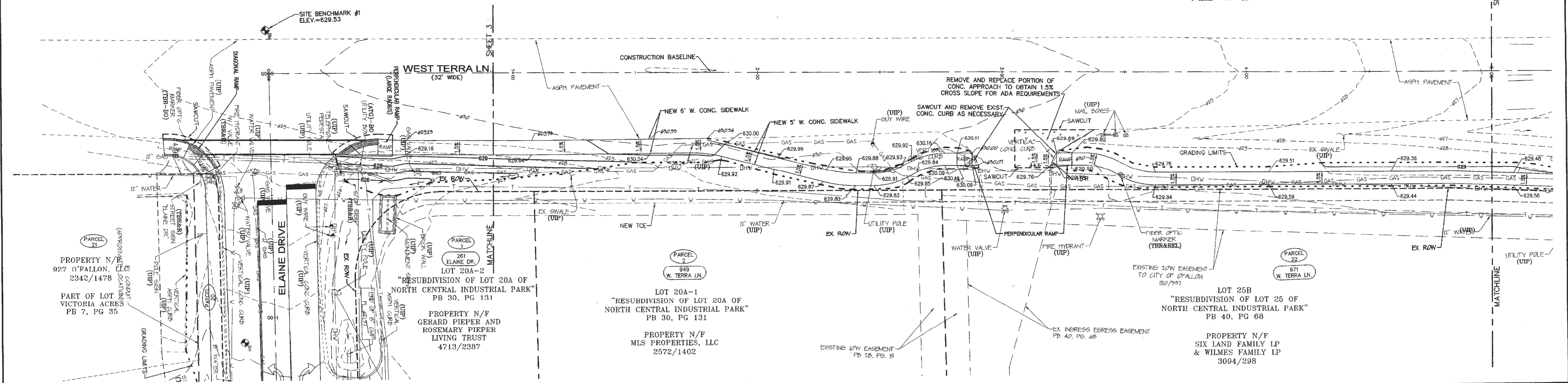
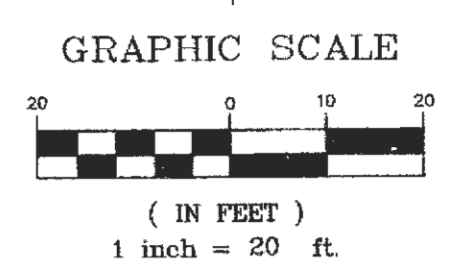


NEW 8" CONC. APPROACH

UNDERGROUND UTILITIES HAVE BEEN PLOTTED FROM AVAILABLE INFORMATION AND THEREFORE THEIR LOCATIONS MUST BE CONSIDERED APPROXIMATE ONLY. THE VERIFICATION OF THE LOCATION OF ALL UNDERGROUND UTILITIES, EITHER SHOWN OR NOT SHOWN ON THIS PLAN, SHALL BE THE RESPONSIBILITY OF THE CONSTRUCTION CONTRACTOR AND SHALL BE LOCATED PRIOR TO EXCAVATION, GRADING, OR CONSTRUCTION.



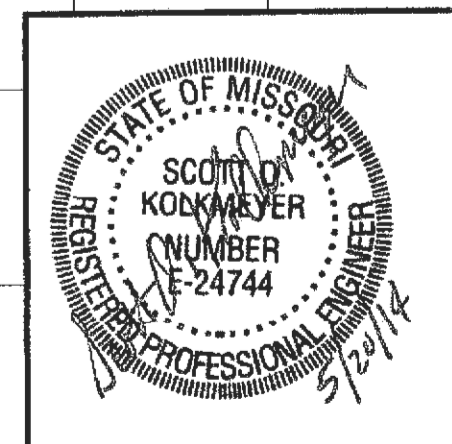
DATE	BY	DESCRIPTION	DATE	BY	DESCRIPTION
6-27-13	ERB	REVISED PER CITY COMMENTS	3-13-14	ERB	REVISED PER MDDOT & CITY COMMENTS
7-17-13	ERB	REVISED PER CITY COMMENTS	5-20-14	ERB	REVISED PER RAILROAD COMMENTS
9-24-13	ERB	REVISED PER MDDOT & CITY COMMENTS			

BAX BAX ENGINEERING CO., INC.
 221 Point West Blvd.
 St. Charles, MO 63301
 Phone: 636-928-5552
 Fax: 636-928-1715

PREPARED FOR: CITY OF O'FALLON
 PROJECT NAME: ELAINE DRIVE IMPROVEMENTS
 PROJECT NO.: 10-15142 DATE: 5/20/2014

PLAN & PROFILE

DISCLAIMER OF RESPONSIBILITY: I hereby disclaim any responsibility for all other drawings, specifications, estimates, reports or other documents or instruments relating to or intended to be used for any part or parts of the architectural or engineering project or survey other than these authenticated by my seal.



Scott O. Kolkmeier
 CIVIL ENGINEER
 MO 024744
 Copyright 2014
 Bax Engineering Company, Inc.
 Authority No. 000955
 All Rights Reserved.