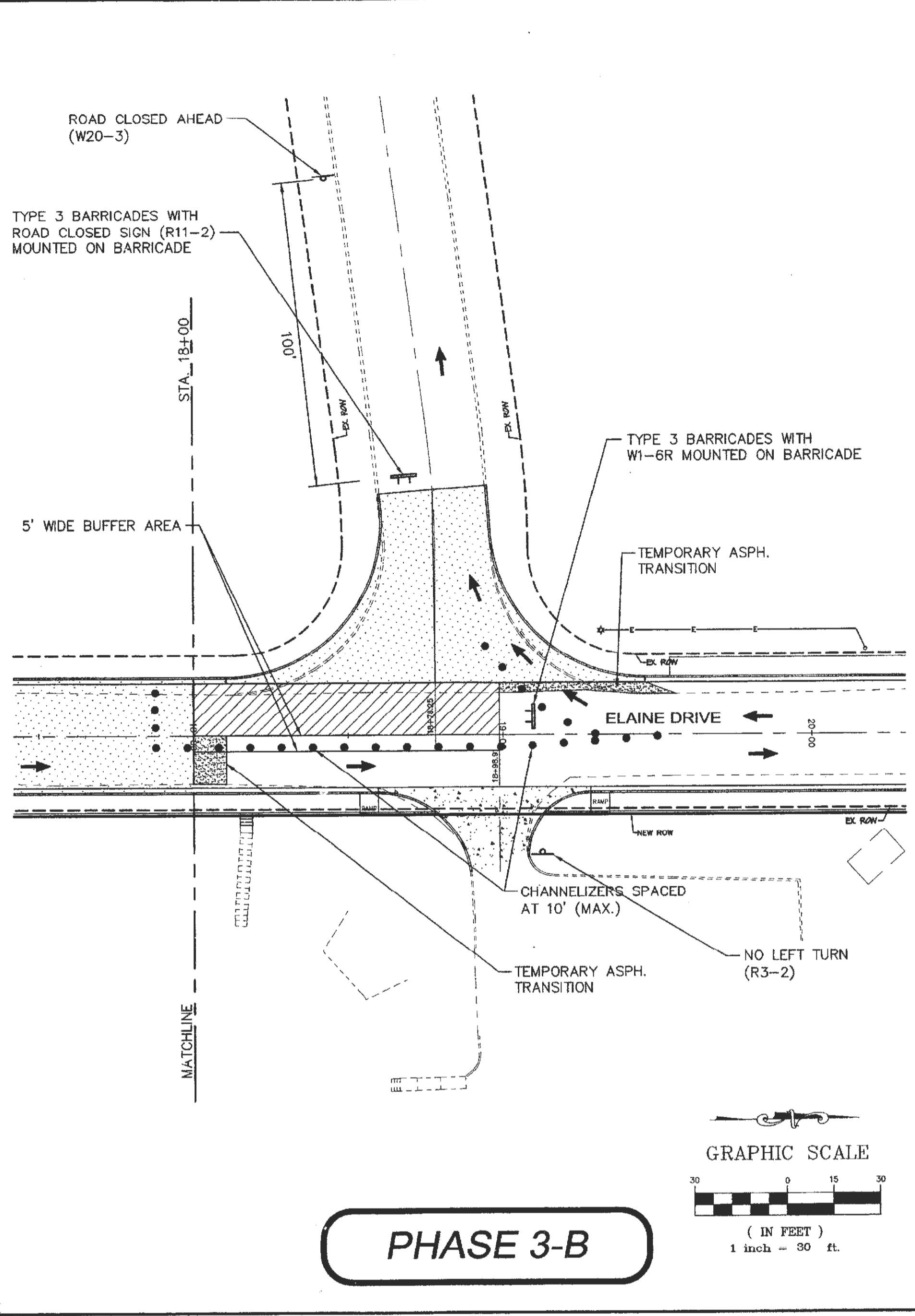
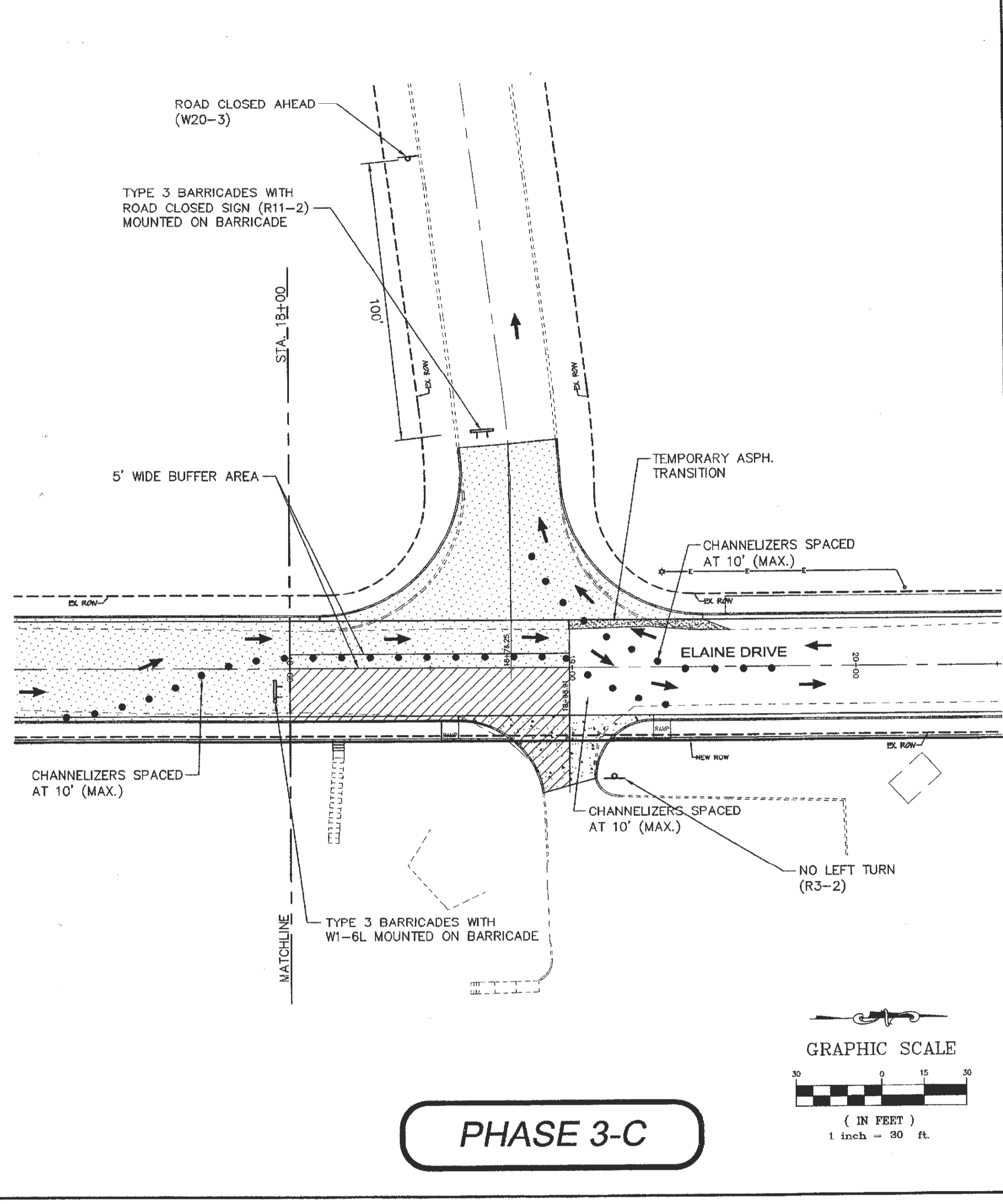


PHASE 3-A



PHASE 3-B



PHASE 3-C

- LEGEND**
- CONSTRUCTION - THIS PHASE
 - TEMPORARY ASPH. PAVEMENT
 - PREVIOUS PHASE CONSTRUCTION
 - TRAFFIC PATTERN
 - CHANNELIZERS

PHASE THREE NOTES:
 1. COST OF MOVING CHANNELIZERS, TEMPORARY SIGNS AND BARRICADES SHALL BE CONSIDERED INCIDENTAL TO CONSTRUCTION.

ENTRANCE CONSTRUCTION NOTE:
 ALL ENTRANCES TO BE CONSTRUCTED IN HALVES. (UNLESS NOTED OTHERWISE)
 DRUMS REQUIRED TO DIRECT TRAFFIC THROUGH ENTRANCES. ACCESS TO ALL SIDE ROADS AND DRIVEWAYS SHALL BE MAINTAINED AT ALL TIMES.



Scott O. Kolkmeier
 CIVIL ENGINEER
 MO 024744
 Copyright 2014
 Box Engineering Company, Inc.
 Authority No. 000855
 All Rights Reserved

REVISIONS		REVISIONS			
DATE	BY	DESCRIPTION	DATE	BY	DESCRIPTION
6-27-13	ERB	REVISED PER CITY COMMENTS	3-13-14	ERB	REVISED PER MODOT & CITY COMMENTS
7-17-13	ERB	REVISED PER CITY COMMENTS	5-20-14	ERB	REVISED PER RAILROAD COMMENTS
9-24-13	ERB	REVISED PER MODOT & CITY COMMENTS			

BAX ENGINEERING CO., INC.
 221 Point West Blvd.
 St. Charles, MO 63301
 Phone: 636-928-5552
 Fax: 636-928-1718

PREPARED FOR:
CITY OF O'FALLON

PROJECT NAME:
ELAINE DRIVE IMPROVEMENTS
 PROJECT NO.: 10-15142 DATE: 5/20/2014

TRAFFIC CONTROL PLANS

DISCLAIMER OF RESPONSIBILITY
 I hereby disclaim any responsibility for all other drawings, specifications, estimates, reports or other documents or instruments relating to or intended to be used for any part or parts of the architectural or engineering project or survey other than those authenticated by my seal.