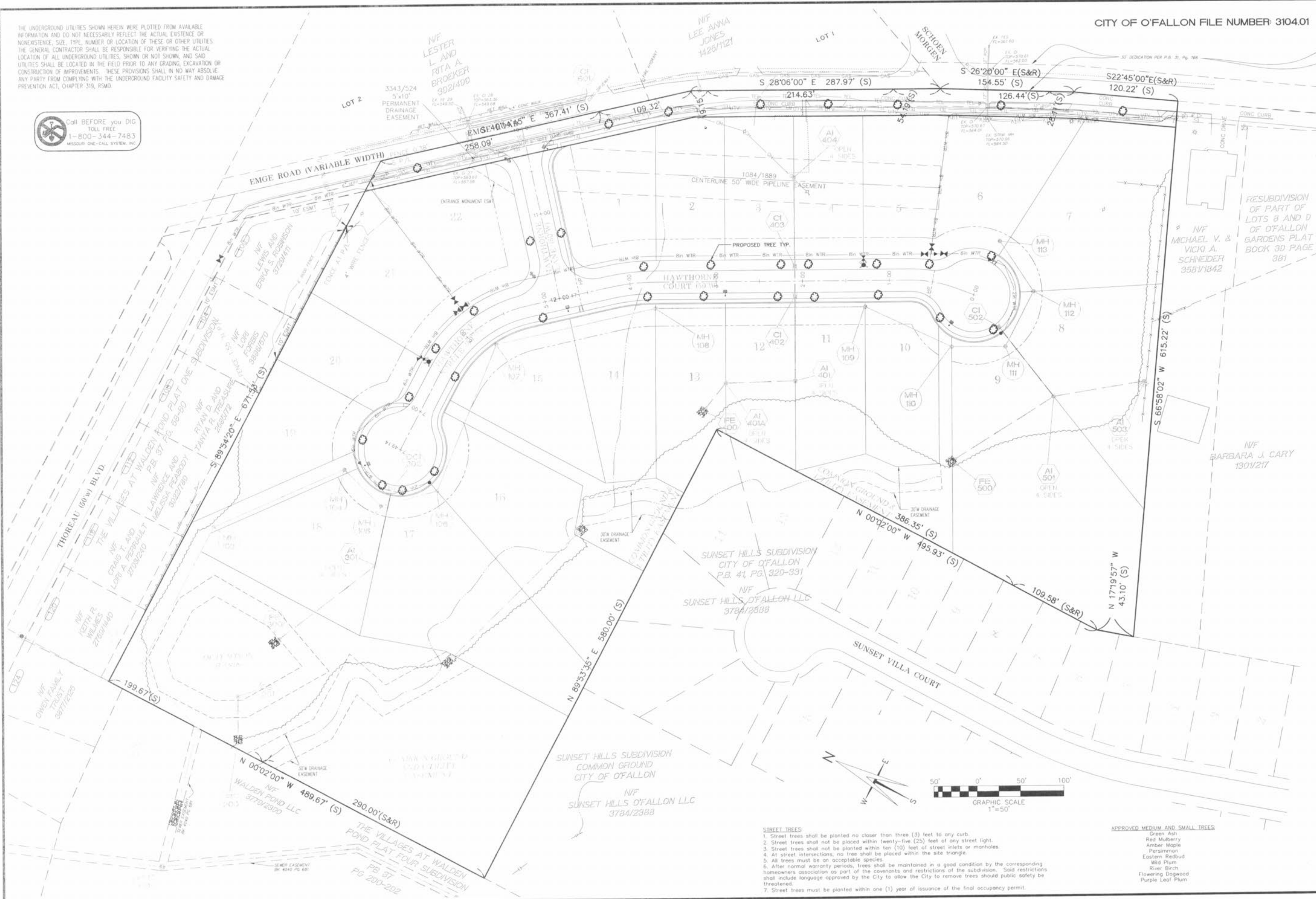


THE UNDERGROUND UTILITIES SHOWN HEREIN WERE PLOTTED FROM AVAILABLE INFORMATION AND DO NOT NECESSARILY REFLECT THE ACTUAL EXISTENCE OR NONEXISTENCE, SIZE, TYPE, NUMBER OR LOCATION OF THESE OR OTHER UTILITIES. THE GENERAL CONTRACTOR SHALL BE RESPONSIBLE FOR VERIFYING THE ACTUAL LOCATION OF ALL UNDERGROUND UTILITIES, SHOWN OR NOT SHOWN, AND S&D UTILITIES SHALL BE LOCATED IN THE FIELD PRIOR TO ANY GRADING, EXCAVATION OR CONSTRUCTION OF IMPROVEMENTS. THESE PROVISIONS SHALL IN NO WAY ABSOLVE ANY PARTY FROM COMPLYING WITH THE UNDERGROUND FACILITY SAFETY AND DAMAGE PREVENTION ACT, CHAPTER 319, RSMO.



CITY OF O'FALLON FILE NUMBER: 3104.01



06/24/05	REVISED PER CITY OF O'FALLON COMMENTS
08/25/05	REVISED PER CITY OF O'FALLON COMMENTS

**IMPROVEMENT PLANS
ELK RIDGE
LANDSCAPE PLAN**

ST. CHARLES ENGINEERING & SURVEYING, INC.
801 S. FIFTH STREET, SUITE 202
ST. CHARLES, MO 63301
TEL: (636) 947-0607 FAX: (636) 947-2448



ORDER NO.	040486
DATE	04/21/05
	10

- STREET TREES:**
1. Street trees shall be planted no closer than three (3) feet to any curb.
 2. Street trees shall not be placed within twenty-five (25) feet of any street light.
 3. Street trees shall not be planted within ten (10) feet of street inlets or manholes.
 4. At street intersections, no tree shall be placed within the site triangle.
 5. All trees must be an acceptable species.
 6. After normal warranty periods, trees shall be maintained in a good condition by the corresponding homeowners association as part of the covenants and restrictions of the subdivision. Said restrictions shall include language approved by the City to allow the City to remove trees should public safety be threatened.
 7. Street trees must be planted within one (1) year of issuance of the final occupancy permit.

- APPROVED MEDIUM AND SMALL TREES:**
- Green Ash
 - Red Mulberry
 - Amber Maple
 - Persimmon
 - Eastern Redbud
 - Wild Plum
 - River Birch
 - Flowering Dogwood
 - Purple Leaf Plum

