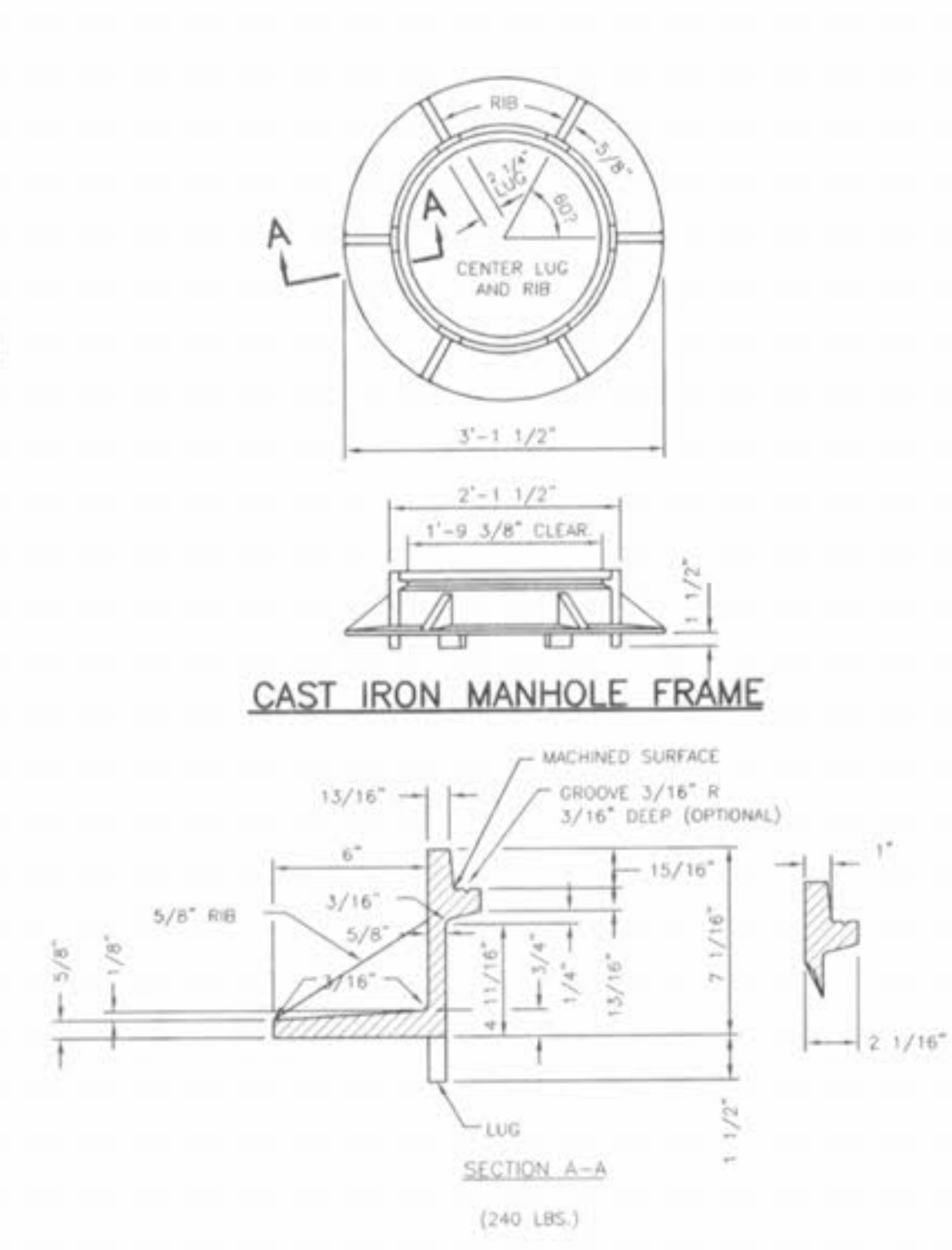
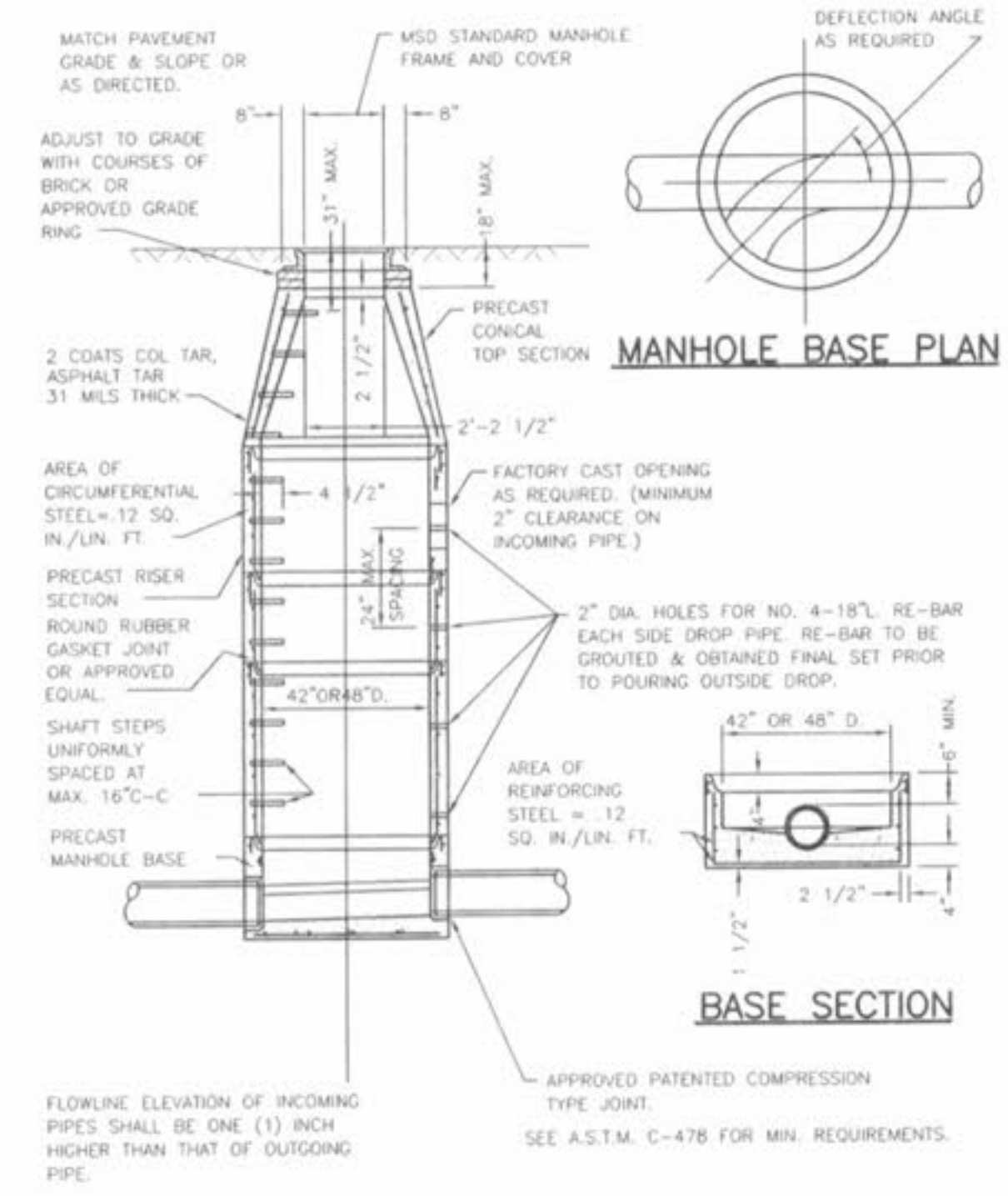
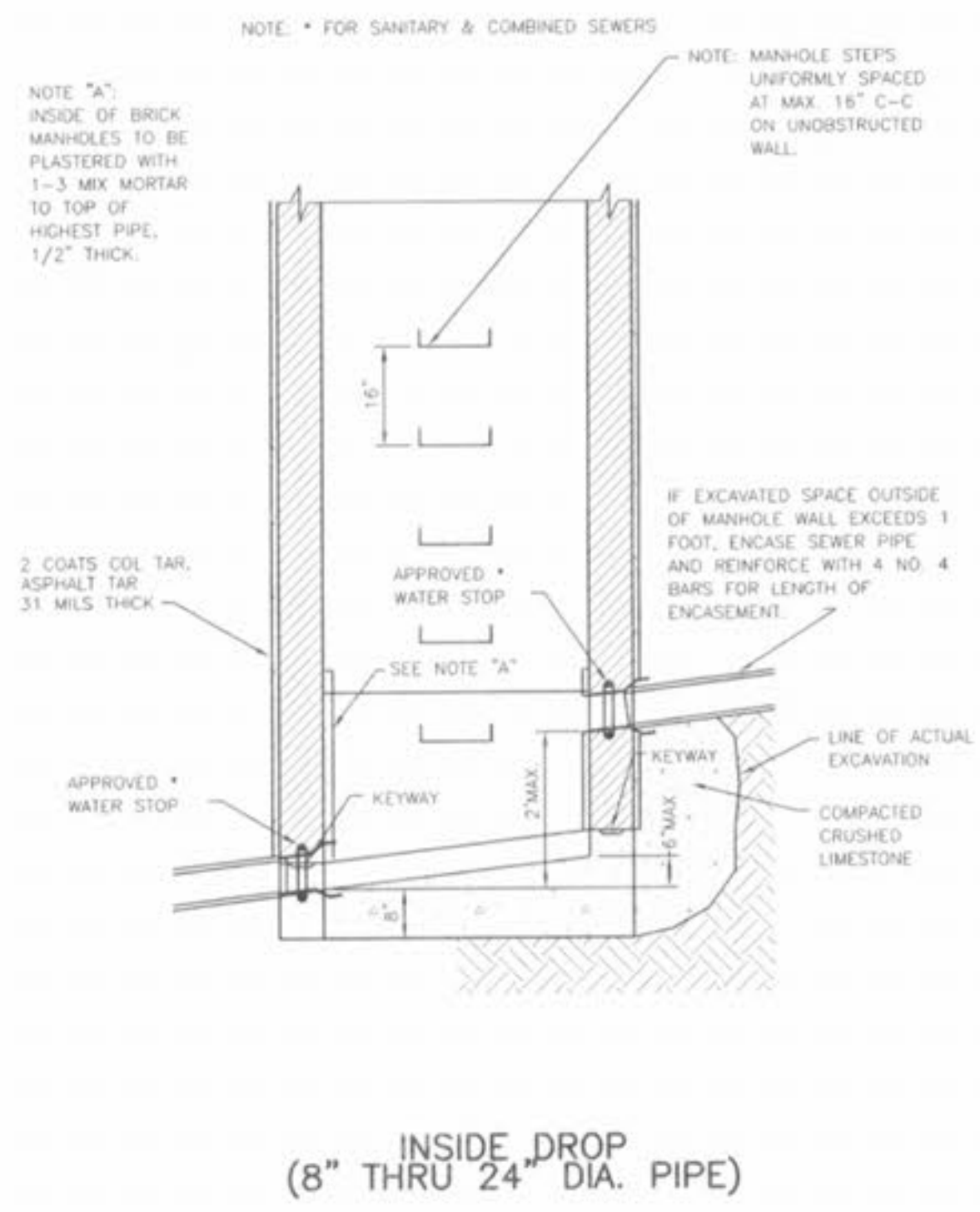
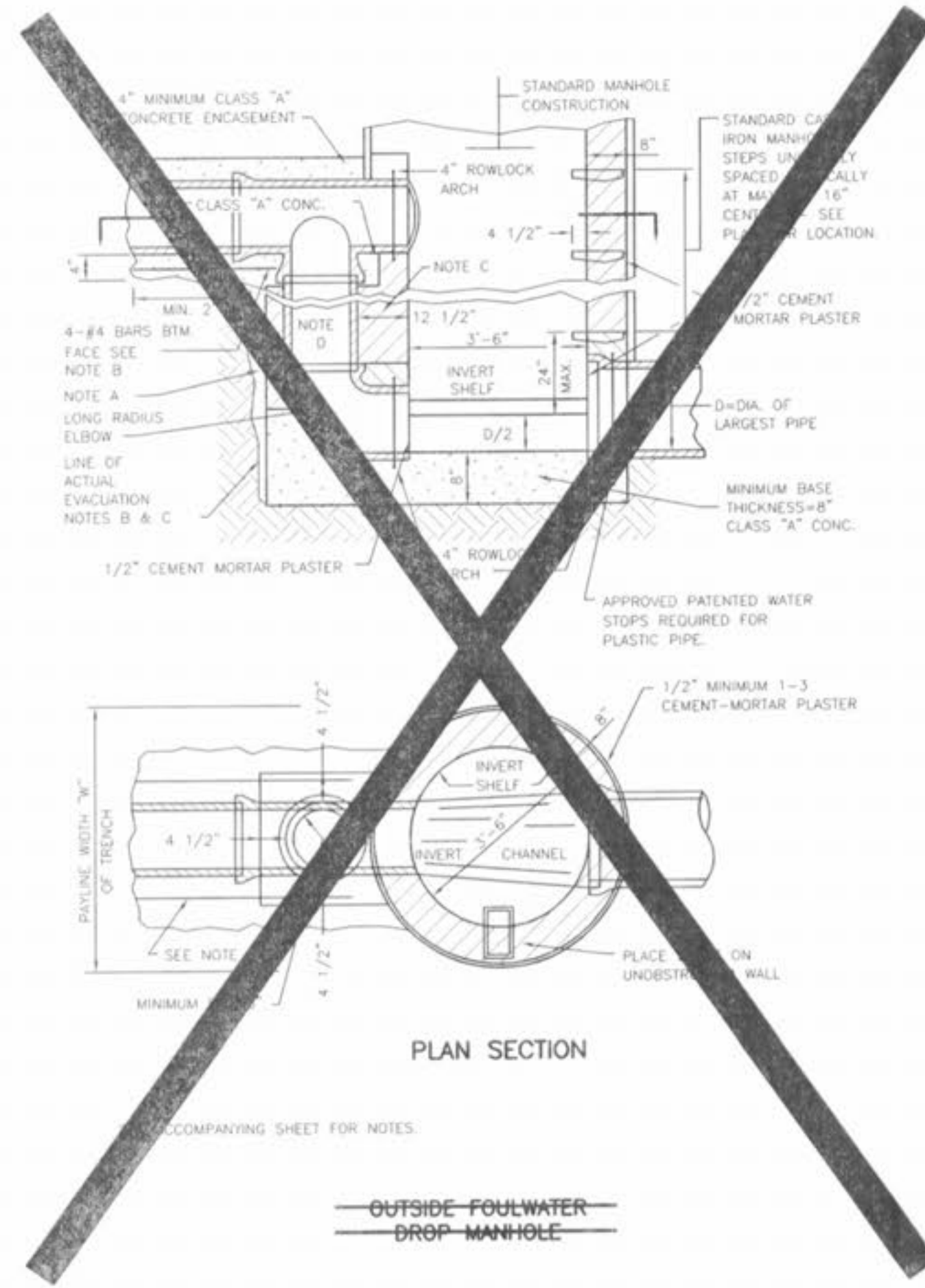


NO BRICK STRUCTURES ARE ALLOWED.



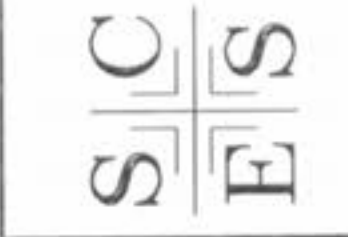
NOTE: ALL SEWER STRUCTURES SHALL BE PRE-CAST.

CITY OF O'FALLON
DEPARTMENT OF PUBLIC
WORKS DESIGN GROUP
O'FALLON, MISSOURI



DISCLAIMER OF RESPONSIBILITY
A PROFESSIONAL ENGINEER HAS REVIEWED THE DRAWINGS PROVIDED
TO BE APPROVED BY THE CITY OF O'FALLON, MISSOURI. THE CITY OF
O'FALLON, MISSOURI, IS NOT RESPONSIBLE FOR ANY ERRORS OR OMISSIONS
OR FOR THE CONSEQUENCES OF ANY SUCH ERRORS OR OMISSIONS. THE
DESIGNER'S LIABILITY IS LIMITED TO THE PROFESSIONAL SERVICES
SPECIFICALLY ESTIMATED REPORTS OF DESIGN AND SPECIFICATIONS
PREPARED BY HIMSELF OR HIS EMPLOYEES OR AGENTS. THIS DOCUMENT
IS NOT TO BE USED FOR ANY PART OR PARTS OF THE CONSTRUCTION
OR MAINTENANCE OF ANY PROJECT OR PROJECTS.

ST. CHARLES ENGINEERING & SURVEYING, INC.
801 S. FIFTH STREET, SUITE 202
ST. CHARLES, MO 63301
TEL: (636) 947-0607 FAX: (636) 947-2448



DESIGNED: _____
CHECKED: _____
DATE: _____
PROJECT NO.: _____
SHEET OF _____

ORDER NO. 040486
DATE 04/15/05
D6

06/25/05 REVISED PER CITY OF O'FALLON COMMENTS
07/27/05 REVISED PER CITY OF O'FALLON COMMENTS
08/09/05 REVISED PER CITY OF O'FALLON COMMENTS