

IMPROVEMENT PLANS
ELK RIDGE
SANITARY DETAILS 2

CITY OF O'FALLON
DEPARTMENT OF PUBLIC
WORKS DESIGN GROUP
O'FALLON, MISSOURI

ST. CHARLES ENGINEERING & SURVEYING, INC.
801 S. FIFTH STREET, SUITE 202
ST. CHARLES, MO 63301
TEL: (636) 947-0607 FAX: (636) 947-2448



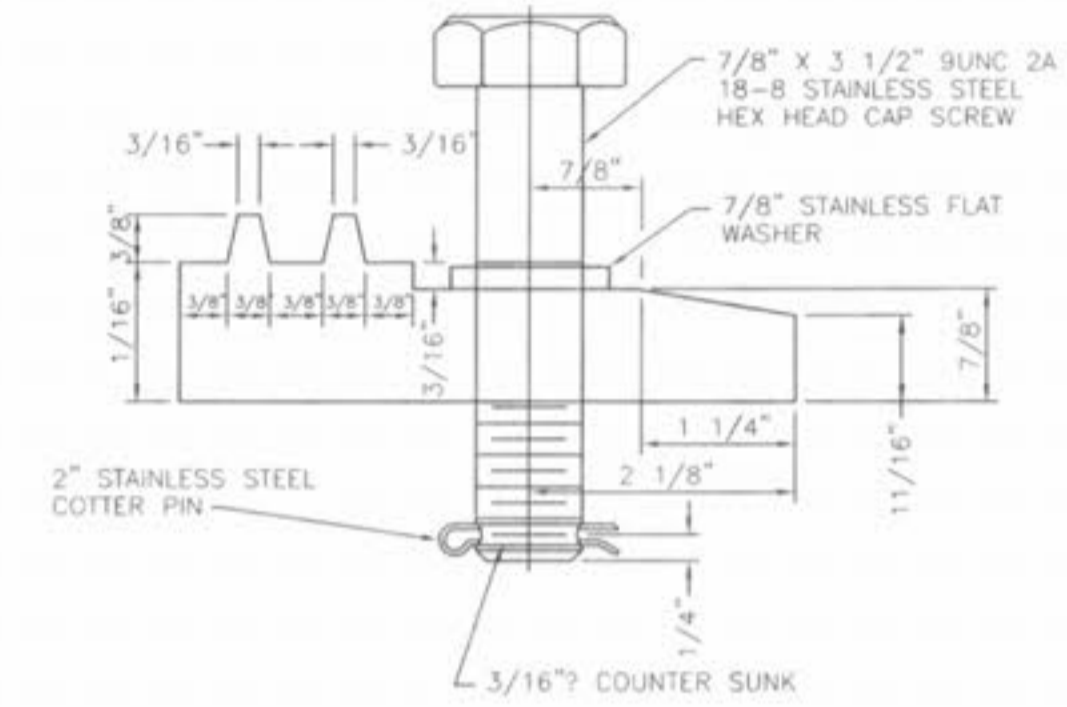
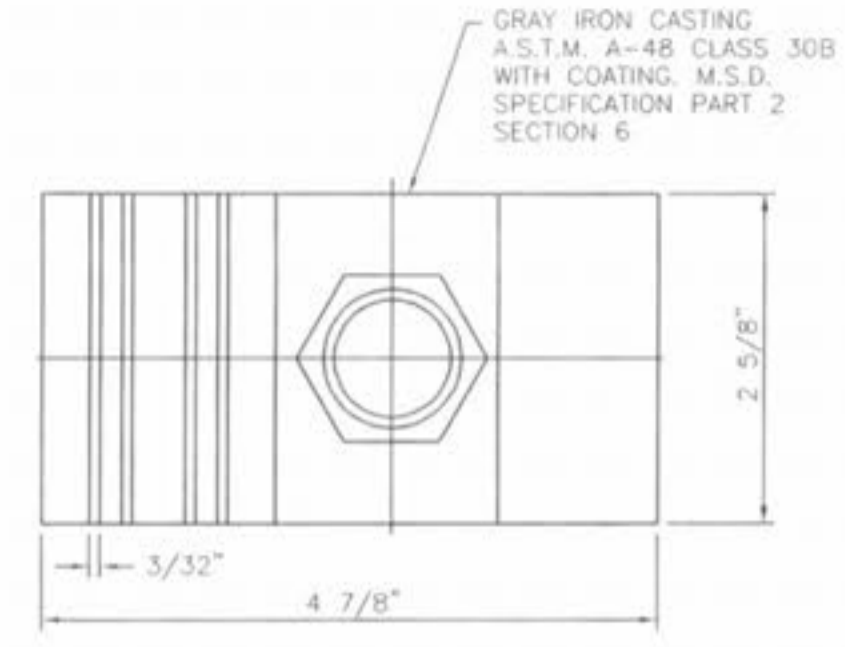
DISCLAIMER OF RESPONSIBILITY
I HEREBY SPECIFY THAT THE DOCUMENTS INTENDED
TO BE APPROVED BY MY SEAL ARE LIMITED
TO THE DRAFT AND THESE DRAWINGS AND
SPECIFICATIONS FOR ALL OTHER DRAWINGS,
DOCUMENTS OR INSTRUMENTS RELATING TO OR
NECESSARY TO BE MADE FOR THE PROJECT OR PART
OF THE PROJECT OR ENGINEERING PROJECT
OR WORK.

S E S

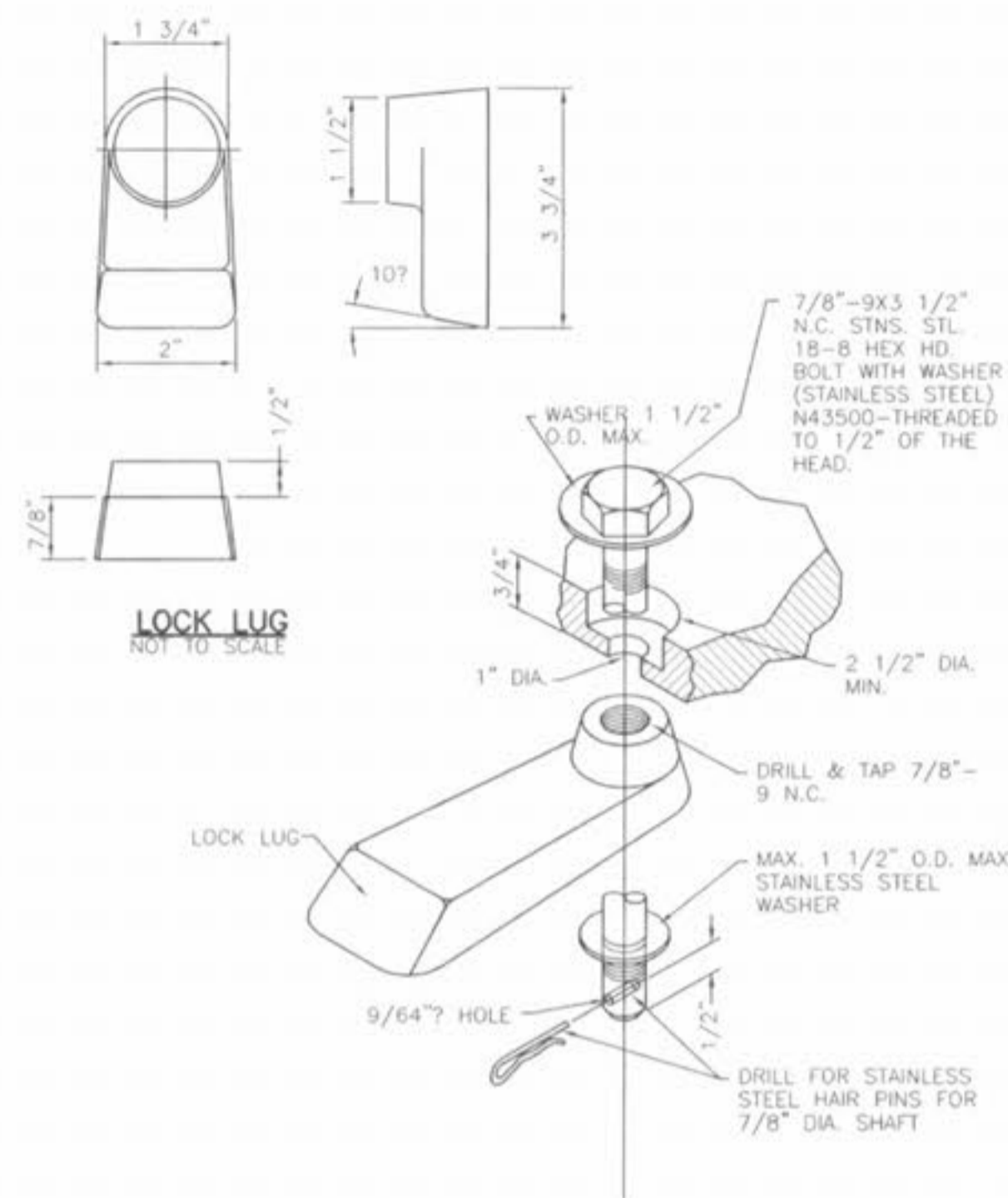


DESIGNED: _____
CHECKED: _____
DATE: _____
PROJECT NO.: _____
SHEET _____
OF _____

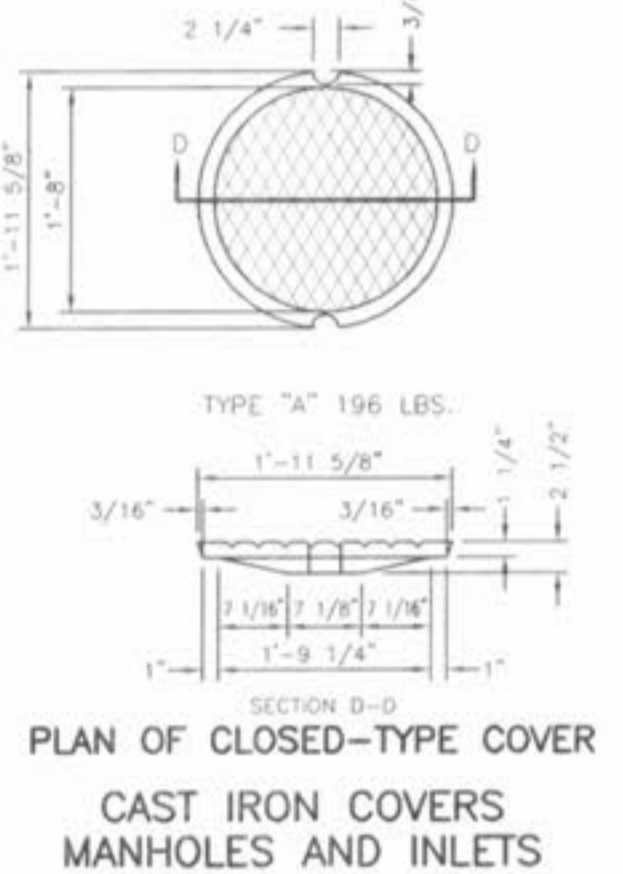
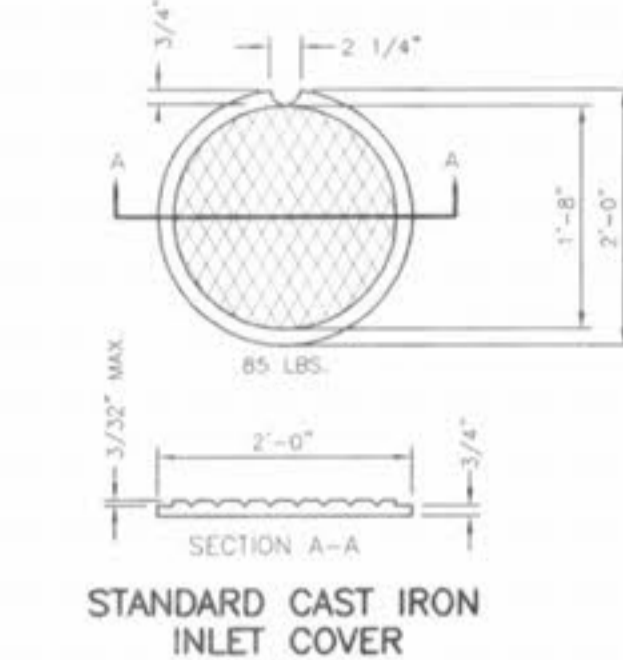
ORDER NO.
040486
DATE
04/15/05
D7



LOCKING DEVICE
FOR TYPE 'T'
LOCK TYPE MANHOLE COVER



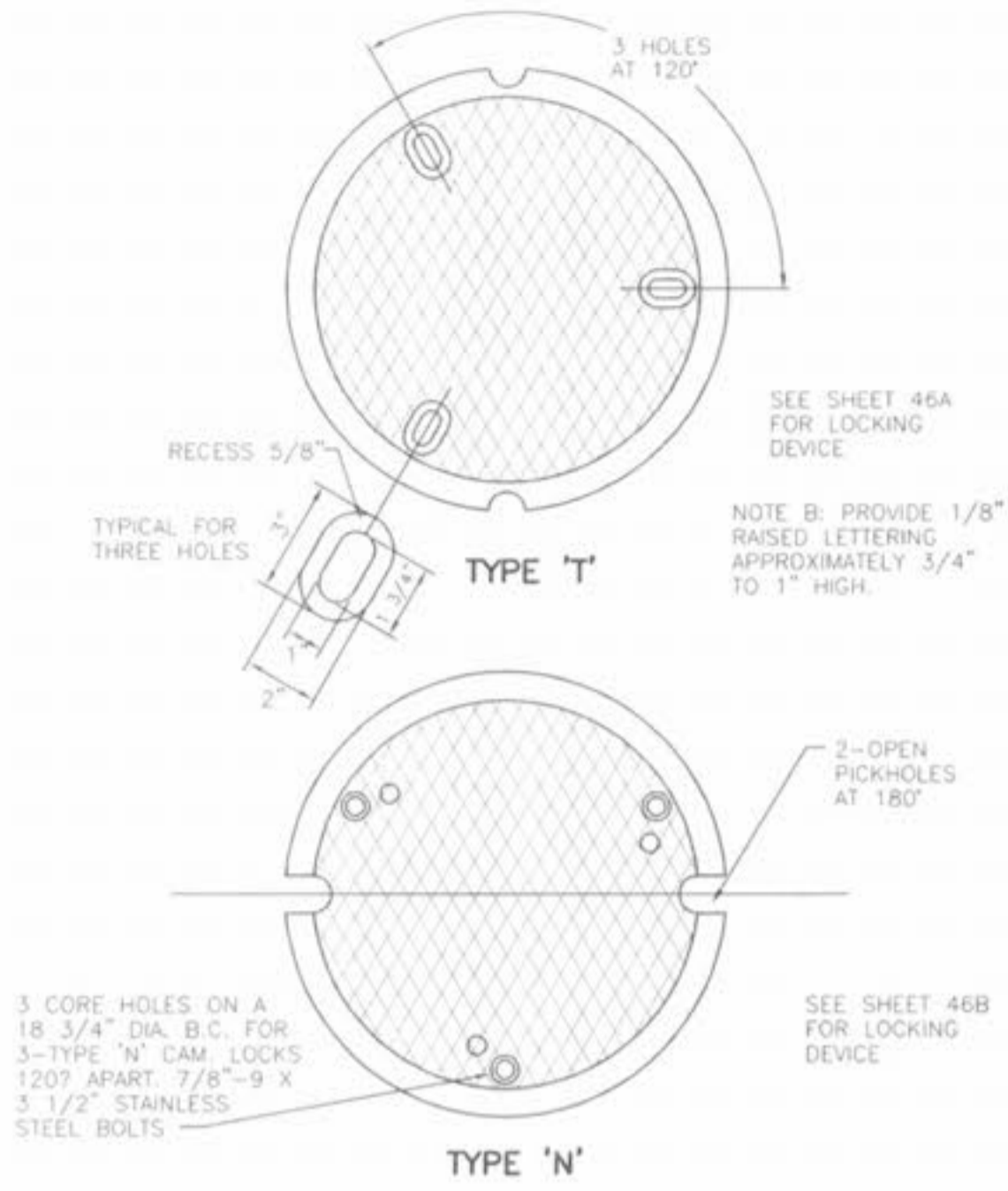
LOCKING DEVICE
FOR TYPE 'N'
LOCK TYPE MANHOLE COVER



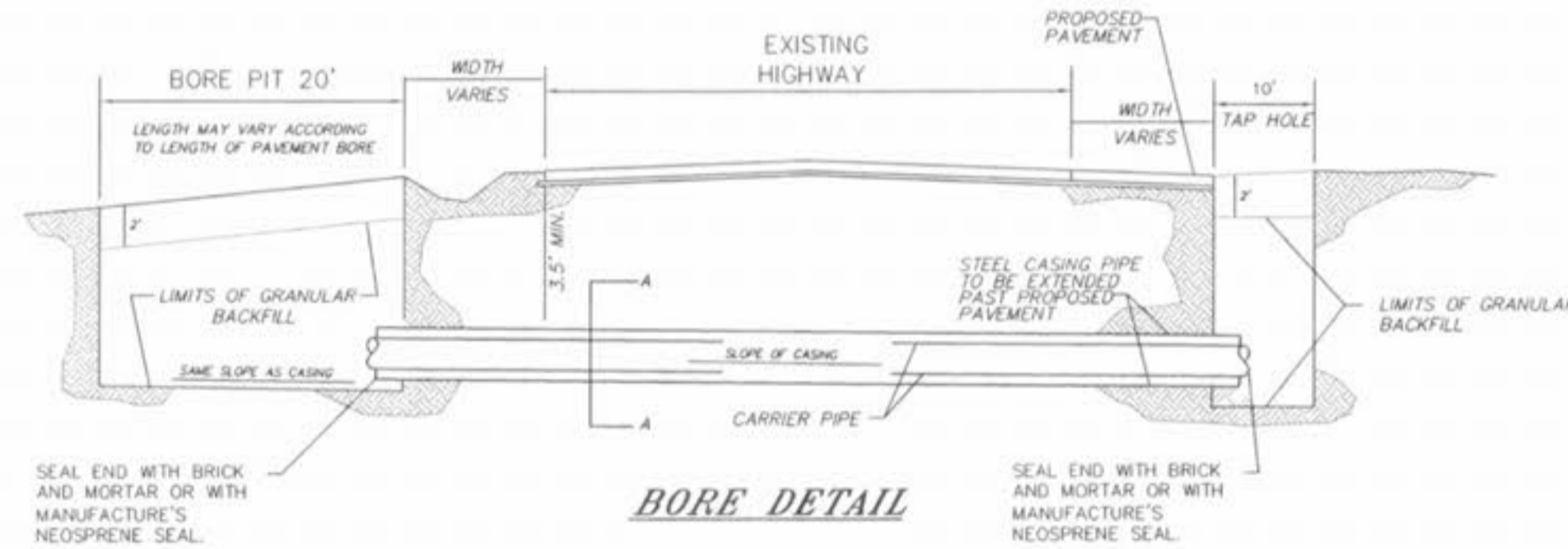
PLAN OF CLOSED-TYPE COVER
CAST IRON COVERS
MANHOLES AND INLETS

NOTE A: MACHINE CONTACTING SURFACES FOR SEAT OF STANDARD MANHOLE FRAME AND BEARING SURFACE OF COVERS.

NOTE B: PROVIDE 1/8" RAISED LETTERING APPROXIMATELY 3/4" TO 1" HIGH.



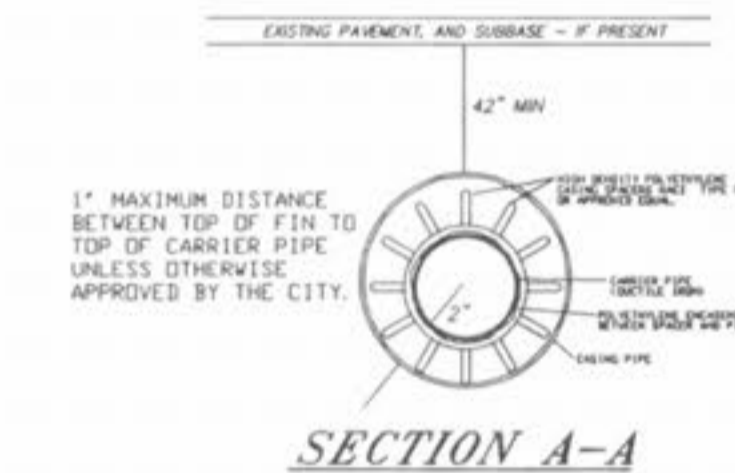
CAST IRON MANHOLE COVERS
(LOCK TYPE)



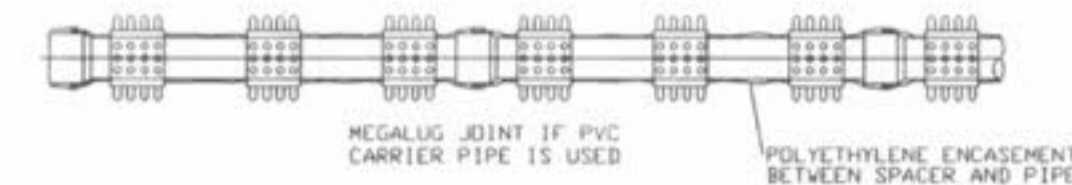
BORE DETAIL

BORING NOTES

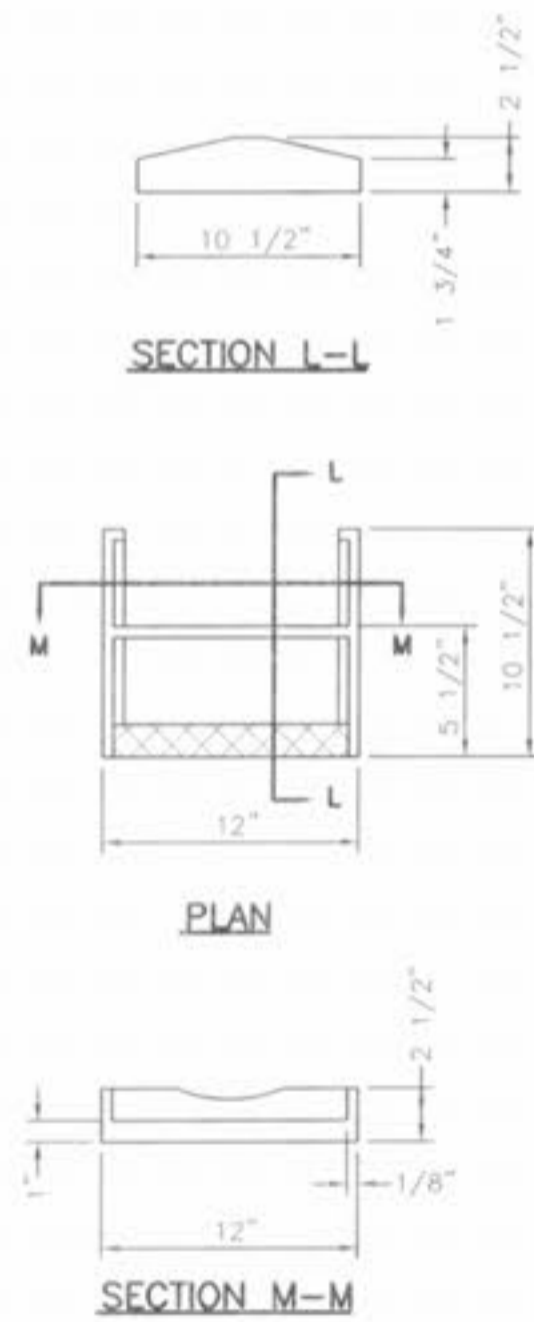
- DO NOT SCALE DRAWING. FOLLOW DIMENSIONS.
- INSTALLATION OF THE CASING AND CARRIER PIPES SHALL MEET THE REQUIREMENTS FOR THE CITY OF O'FALLON SPECIFICATIONS.
- ALL JOINTS IN THE CASING PIPE SHALL BE WELDED.
- THE PIPE TO BE PLACED IN THE BORE HOLE SHALL BE CAST-IRON PIPE EXCEPT AS REQUIRED ON THE PLANS.
- STEEL CASING PIPE USED IN THE INSTALLATION OF WATER OR SEWER LINE AND CONDUITS SHALL HAVE A MINIMUM YIELD STRENGTH OF 35,000 P.S.I.
- CARRIER PIPE SHALL BE CONFIRMED BY CITY PRIOR TO BORE AND PIPE PLACEMENT.
- CASING PIPE SHALL BE CONFIRMED BY CITY PRIOR TO BORE AND PIPE PLACEMENT.
- NOTE: EXISTING FACILITIES ARE TO REMAIN IN USE AT ALL TIMES. IT IS THE RESPONSIBILITY OF THE CONTRACTOR TO LOCATE ALL SERVICE LINES AND UTILITIES PRIOR TO CONSTRUCTION.



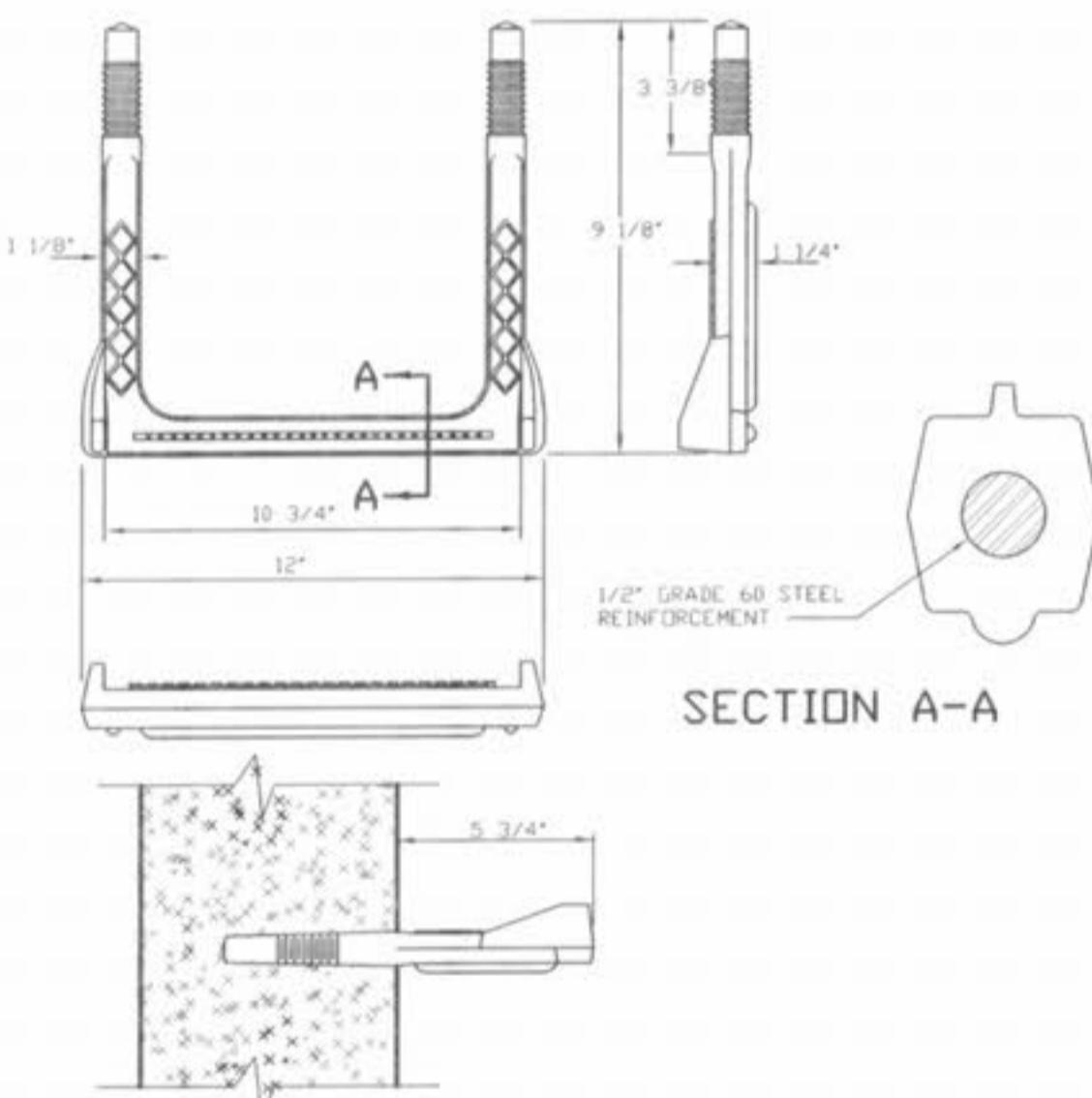
ENCASEMENT SPACER DETAILS



SPACING DETAILS



CAST IRON MANHOLE STEPS



COPOLYMER POLYPROPYLENE PLASTIC
MANHOLE STEP FOR
PRECAST MANHOLE

NOTE: ALL SEWER STRUCTURES SHALL BE PRE-CAST.