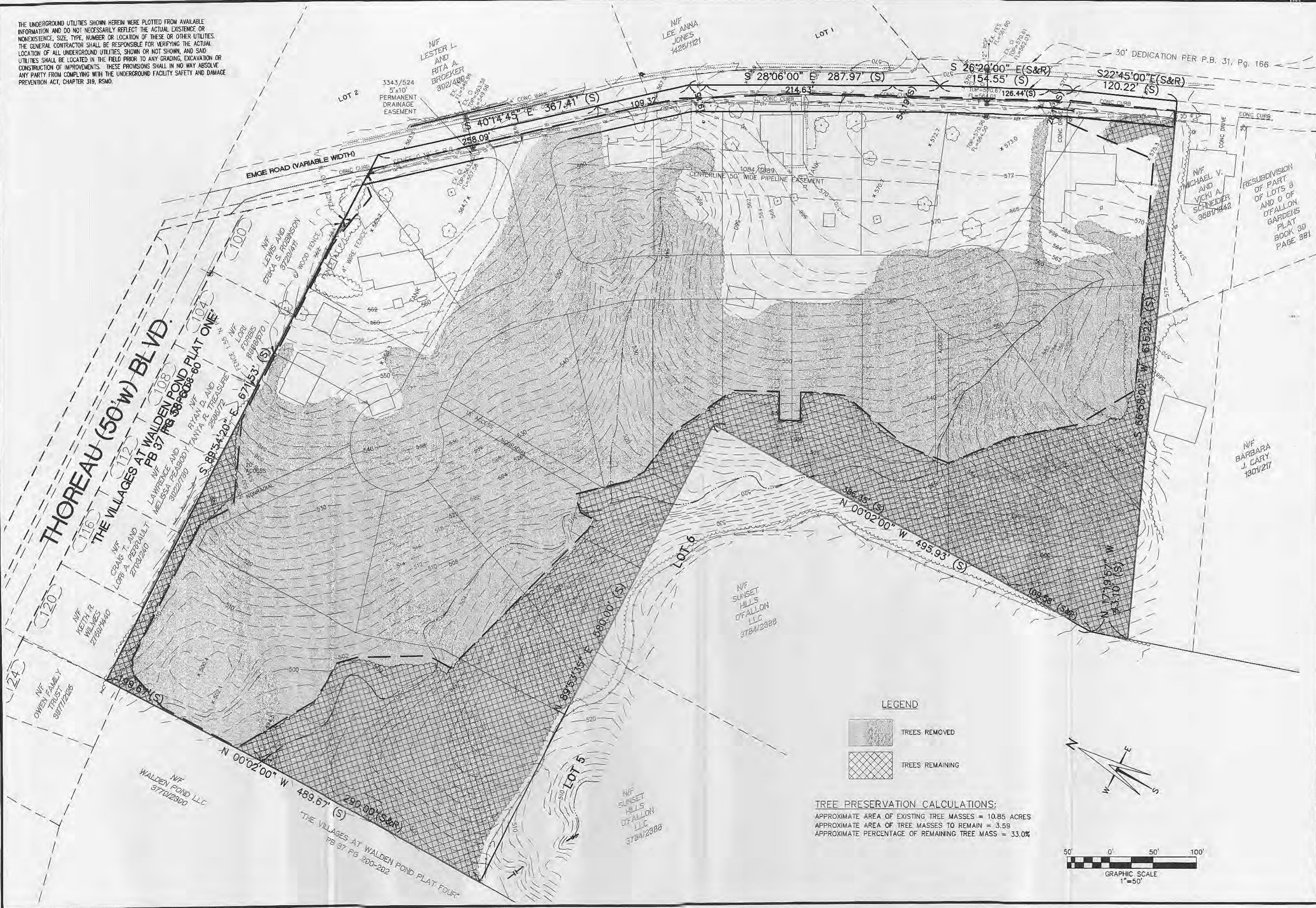


THE UNDERGROUND UTILITIES SHOWN HEREIN WERE PLOTTED FROM AVAILABLE INFORMATION AND DO NOT NECESSARILY REFLECT THE ACTUAL EXISTENCE OR NONEXISTENCE, SIZE, TYPE, NUMBER OR LOCATION OF THESE OR OTHER UTILITIES. THE GENERAL CONTRACTOR SHALL BE RESPONSIBLE FOR VERIFYING THE ACTUAL LOCATION OF ALL UNDERGROUND UTILITIES, SHOWN OR NOT SHOWN, AND SAID UTILITIES SHALL BE LOCATED IN THE FIELD PRIOR TO ANY GRADING, EXCAVATION OR CONSTRUCTION OF IMPROVEMENTS. THESE PROVISIONS SHALL IN NO WAY ABSOLVE ANY PARTY FROM COMPLYING WITH THE UNDERGROUND FACILITY SAFETY AND DAMAGE PREVENTION ACT, CHAPTER 319, RSMO.

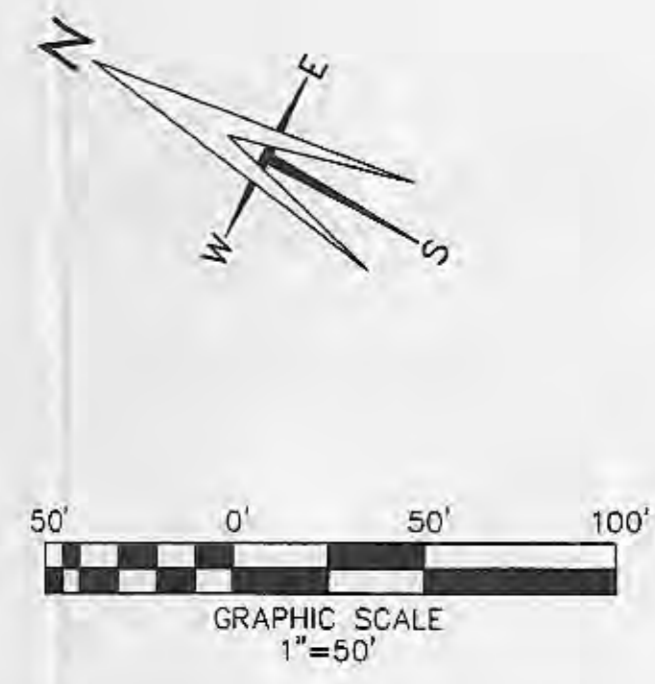


**LEGEND**

TREES REMOVED

TREES REMAINING

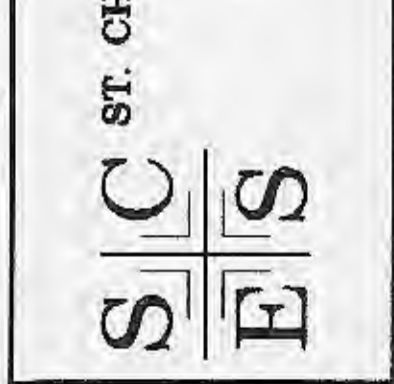
**TREE PRESERVATION CALCULATIONS:**  
 APPROXIMATE AREA OF EXISTING TREE MASSES = 10.85 ACRES  
 APPROXIMATE AREA OF TREE MASSES TO REMAIN = 3.59  
 APPROXIMATE PERCENTAGE OF REMAINING TREE MASS = 33.0%



REV	PER CITY AND CLIENT COMMENT
3/02/05	
4/12/05	

**ELK RIDGE**  
 TREE PRESERVATION  
 INTERIM GRADING PLAN  
 SEDIMENT / EROSION CONTROL PLAN

ST. CHARLES ENGINEERING & SURVEYING, INC.  
 801 S. FIFTH STREET, SUITE 202  
 ST. CHARLES, MO 63301  
 TEL: (636) 947-0607 FAX: (636) 947-2448



**ORDER NO.**  
040486

**DATE**  
02/01/05

**IG-4**