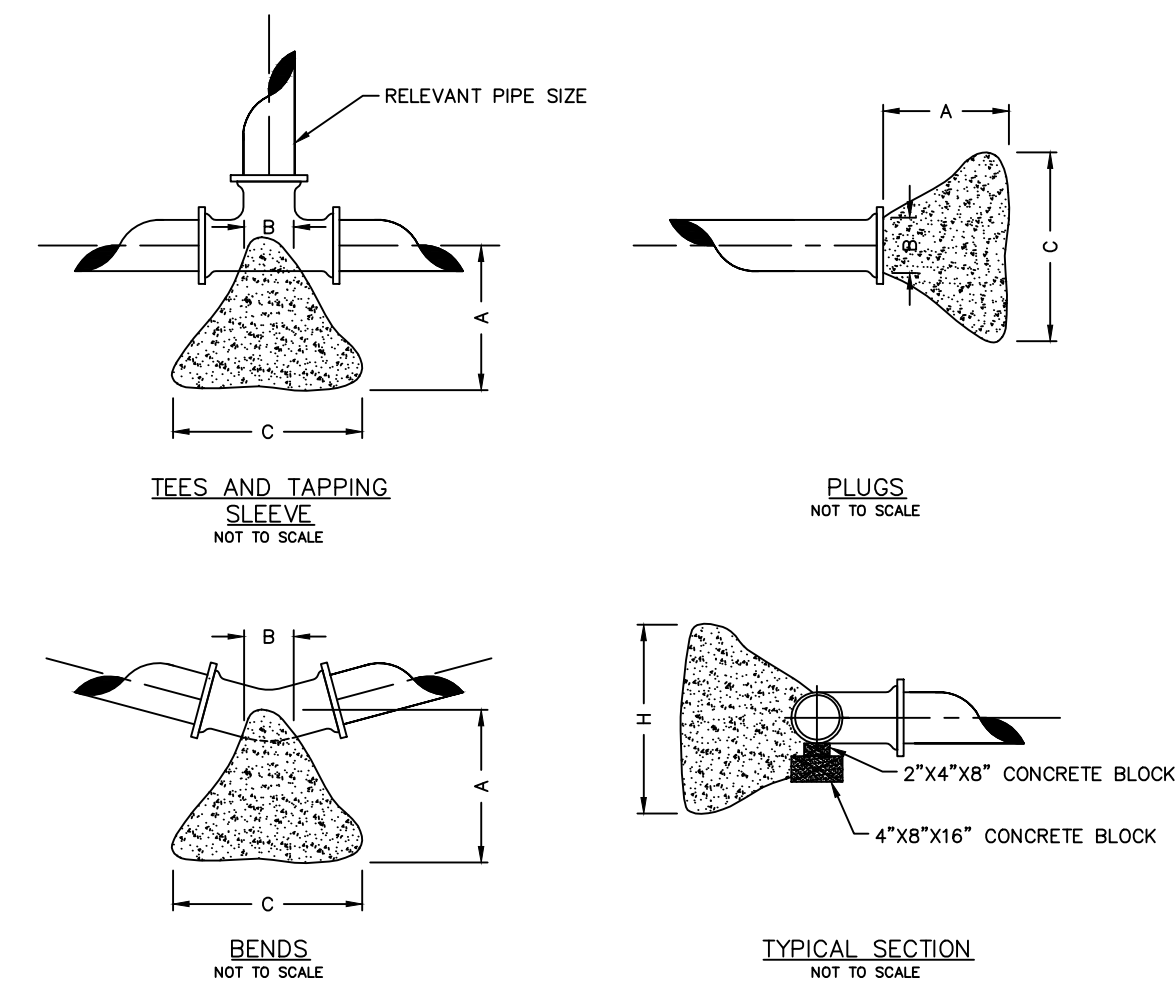


NOTE: THIS DETAIL IS FROM PWS#2



THRUST BLOCK DIMENSIONS - INCHES

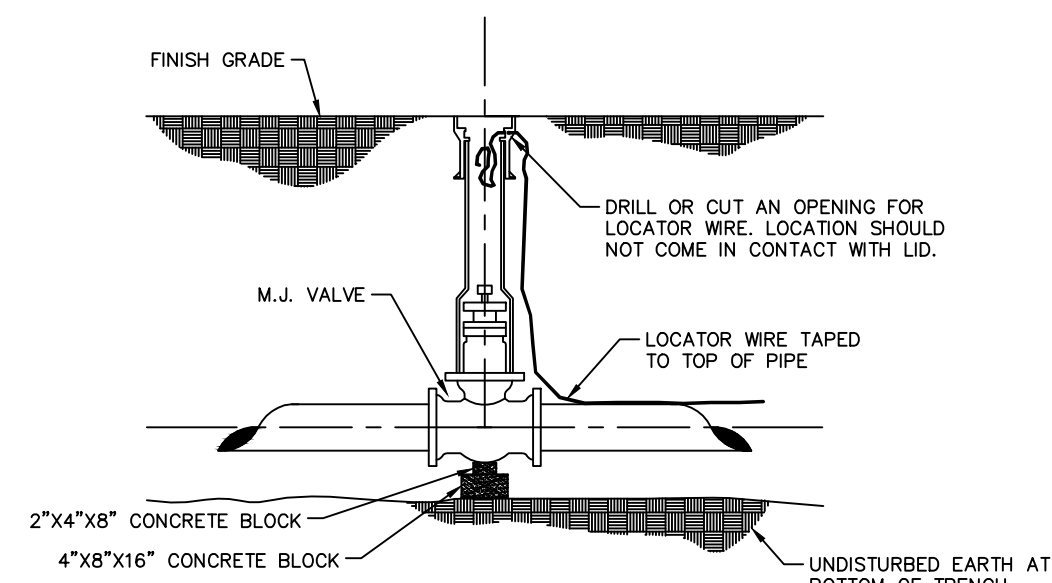
PIPE DIA.	ALL FTGS.		TEE PLUG TAPPING		90 DEGREE BEND		45 DEGREE BEND		22-1/2 BEND		11-1/4 BEND	
	A	B	C	H	C	H	C	H	C	H	C	H
4	14	4	24	12	26	15	18	12	12	12	12	12
6	16	6	36	18	36	24	30	18	24	12	12	12
8	20	8	36	30	42	36	36	24	24	18	18	12
10	20	10	48	36	66	36	36	36	28	24	18	18
12	24	12	68	36	82	42	52	36	40	24	28	18

NOTE
FOR FITTINGS LARGER THAN 12" SPECIAL RESTRAINT DESIGNS ARE REQUIRED.

**HORIZONTAL THRUST BLOCKING
DETAIL "C"**

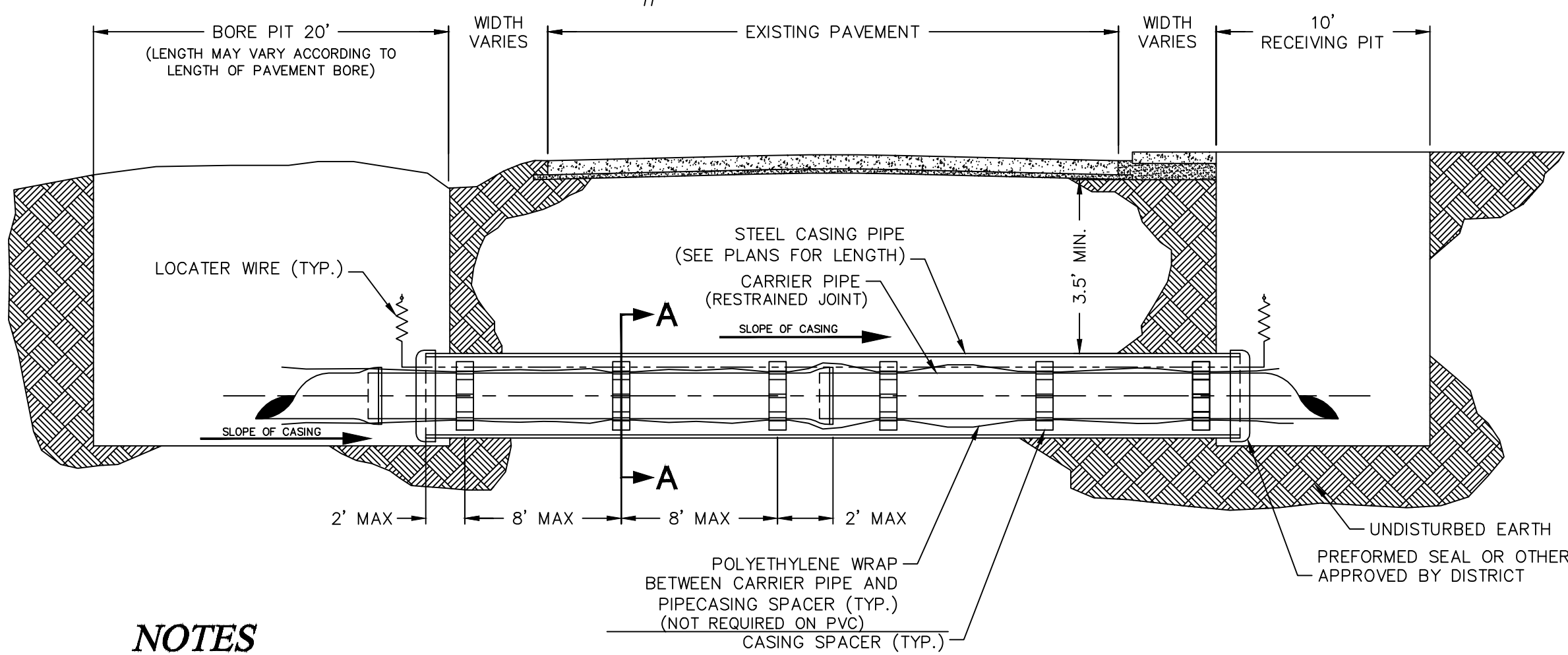
NOTE: THIS DETAIL IS FROM PWS#2

Buffalo box is an acceptable product to use.
Tyler 562-S and 564-S are acceptable products.



**GATE VALVE DETAIL
DETAIL "D"**
NOT TO SCALE

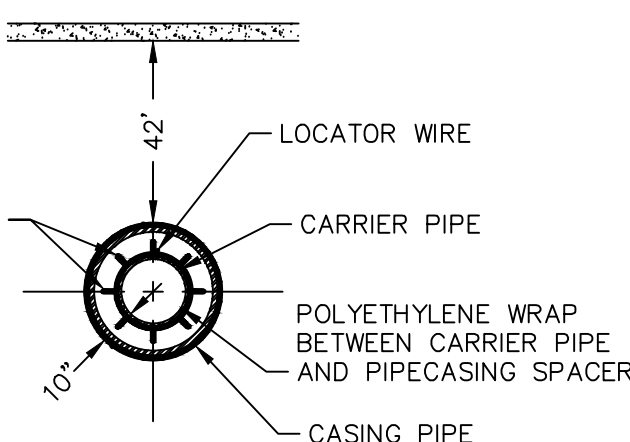
NOTE: THIS DETAIL IS FROM PWS#2



- NOTES**
- INSTALLATION OF THE CASING AND CARRIER PIPES SHALL MEET THE REQUIREMENTS OF PUBLIC WATER SUPPLY DISTRICT No. 2 OF ST. CHARLES COUNTY.
 - CASING PIPES FOR ROAD AND HIGHWAY CROSSINGS SHALL BE WELDED STEEL PIPE WITH A MINIMUM WALL THICKNESS OF 3/4" NON-COATED AND SHALL HAVE A MINIMUM DIAMETER OF 10" LARGER THAN THE NOMINAL SIZE OF THE CARRIER PIPE.
 - THE CARRIER PIPE SHALL BE RESTRAINED JOINT PIPE

**PLAN VIEW
NOT TO SCALE**

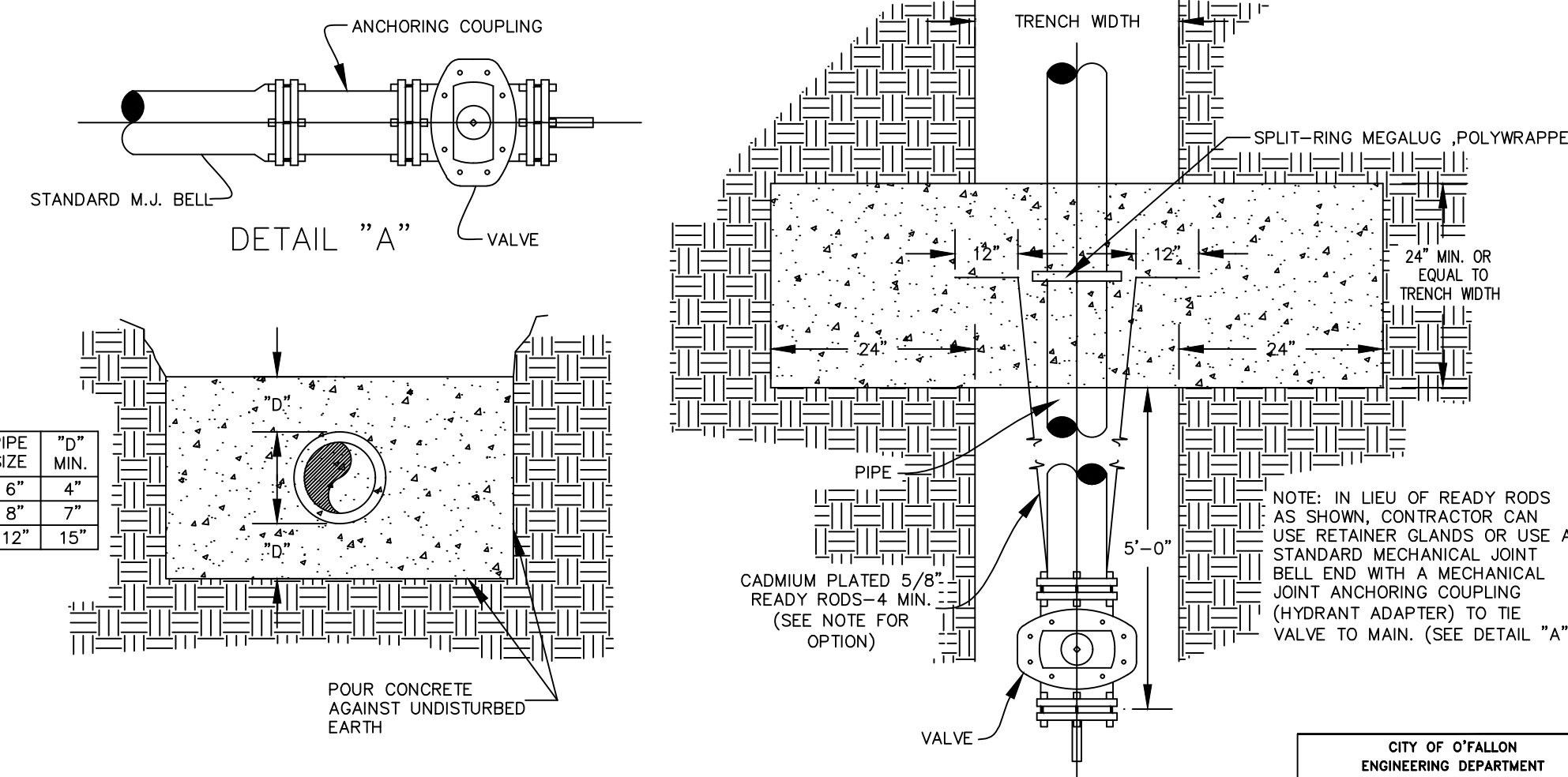
HIGH DENSITY POLYETHYLENE CASING SPACERS RACI TYPE F60, RANGER TYPE II OR APPROVED EQUAL



**SECTION A-A
NOT TO SCALE**

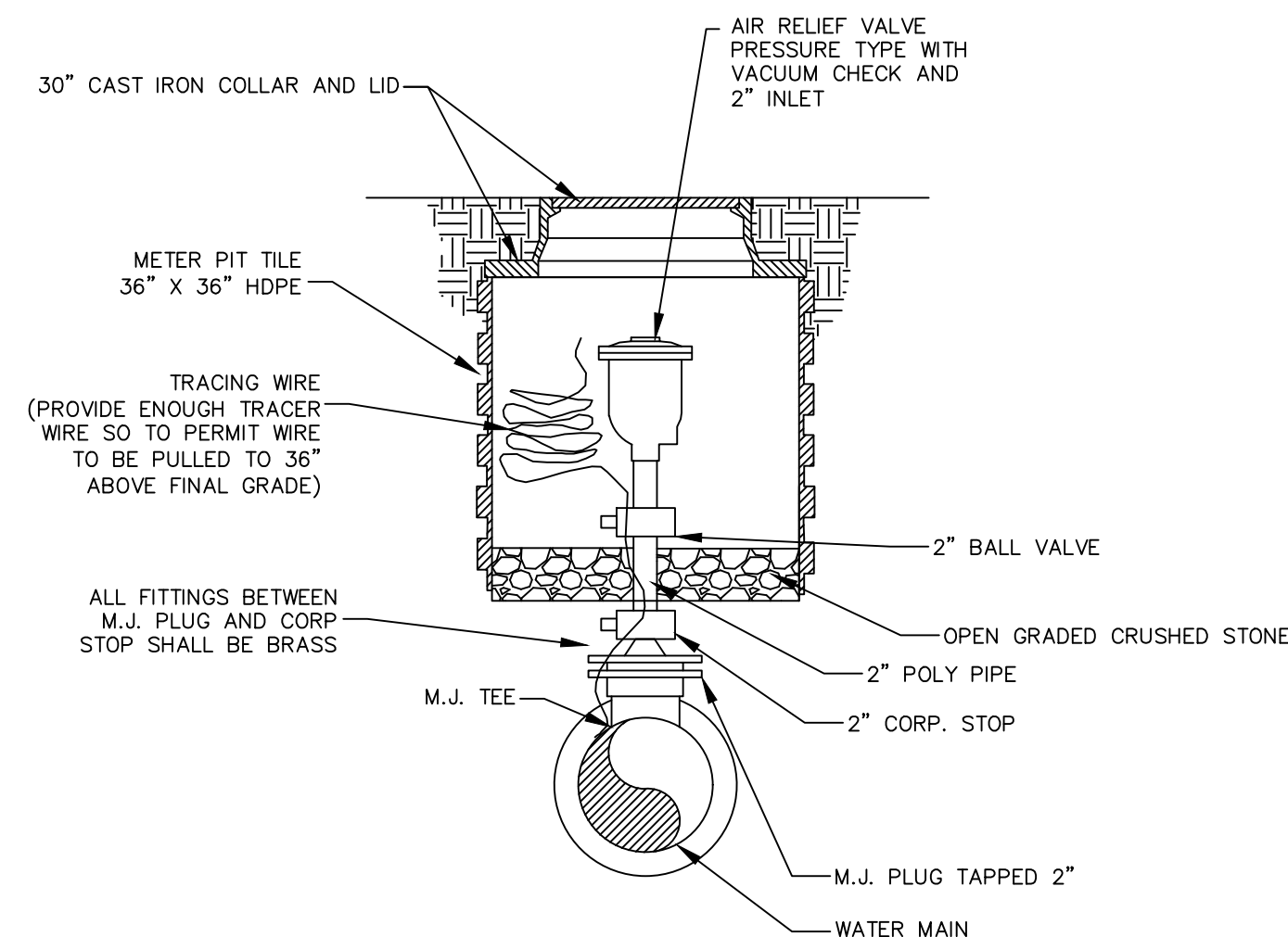
FOR SANITARY SEWER BORES, SEE THE MSD DETAIL

**TYPICAL WATER BORE AND ENCASEMENT
DETAIL "H"**



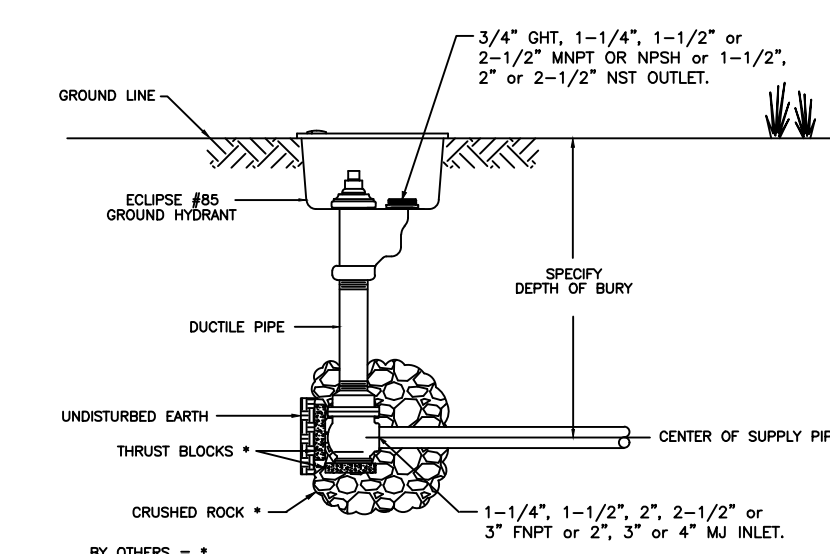
**CROSS BLOCK DETAIL
NOT TO SCALE**

CROSS BLOCK DETAILS



**AIR RELIEF ASSEMBLY
NOT TO SCALE**

ECLIPSE NO. 85 GROUND HYDRANT



Ground Hydrants shall be self-draining, non-freezing, compression type with a 1-3/8" main opening, and operated with a "T" handle operating handle. Inlet shall be (2" 2-1/2" & 3" FNPT, or 2", 3" or 4" M). Outlet shall be (3/4" GHT or 1", 1-1/4", 1-1/2", 2" or 2-1/2" MNPT or 1-1/2", 2" or 2-1/2" NST).

Hydrants shall have a (ductile iron (STD), galvanized steel, stainless steel, or brass) exterior casing pipe, a galvanized (STD), stainless steel or brass) interior non-turning operating rod with a heavy wall (cast iron (STD), or brass) box and locking lid.

Principal interior operating parts shall be brass, bronze and aluminum and be removable for servicing without excavating the hydrant.

Ground Hydrants shall be set in 4 cubic feet of crushed stone to allow for proper drainage of the hydrant. Recommendations of the AWWA should followed when installing the hydrant.

Hydrants shall be Eclipse No. 85 Eclipse Blow-Off Hydrant as manufactured by John C. Kupferle Company, St. Louis, MO or approved equal.

BLOW-OFF DETAIL

NO.	DATE	REVISION

DRAWN
G.B.

APPROVED

DATE
8-26-09

MATL.

ECLIPSE
KUPFERLE FOUNDRY COMPANY

211 NORTH 10TH STREET ST. LOUIS, MO 63102
314.281.8738 800.231.3900 FAX 314.215.2820
http://www.kupferle.com

PART NO. 885 BLOW-OFF HYDRANT SCALE TO FIT

PROJECT TITLE:

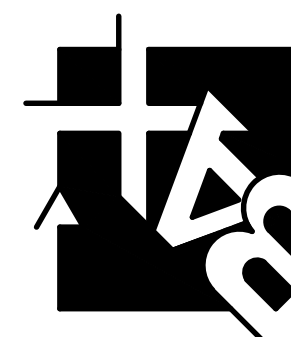
ELLA'S PLACE

EMGE ROAD
CITY OF O'FALLON
ST. CHARLES COUNTY
MO. 63366

Issue Date: 09/26/2018

ENGINEERING
PLANNING
SURVEYING

221 Point View Blvd.
St. Charles, MO 63301
636-928-5562
FAX 928-1718



DISCLAIMER OF RESPONSIBILITY
I hereby specify that the documents intended to be authenticated by my seal are limited to this sheet, and I hereby disclaim any responsibility for all other drawings, Specifications, Estimates, Reports or other documents or instruments relating to or intended to be used for any part or parts of the architectural or engineering project or survey.

REVISIONS

NO.	DATE	REVISION
11/29/18	CITY COMMENTS	
01/09/19	CITY COMMENTS	
03/22/21	CLIENT COMMENTS	
05/05/21	CITY COMMENTS	
05/21/21	CITY COMMENTS	

Developer / Owner:

Schneider Custom Homes
429 North Main Street
O'Fallon, MO 63366
636-240-0930

WATER DETAILS

P-Z No. #19-007760

Approval Date: 11/05/2020

City No. #

Page No.

13 of 18

ENGINEERS SEAL DOES NOT APPLY TO CITY OF O'FALLON DETAILS ON THIS SHEET.