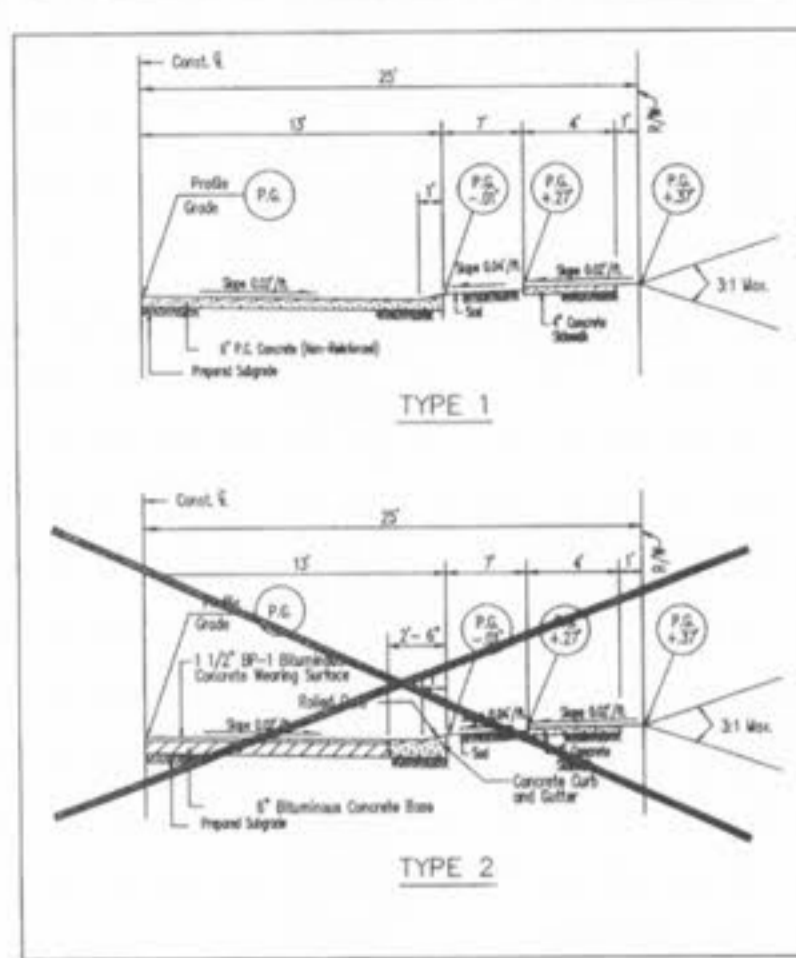


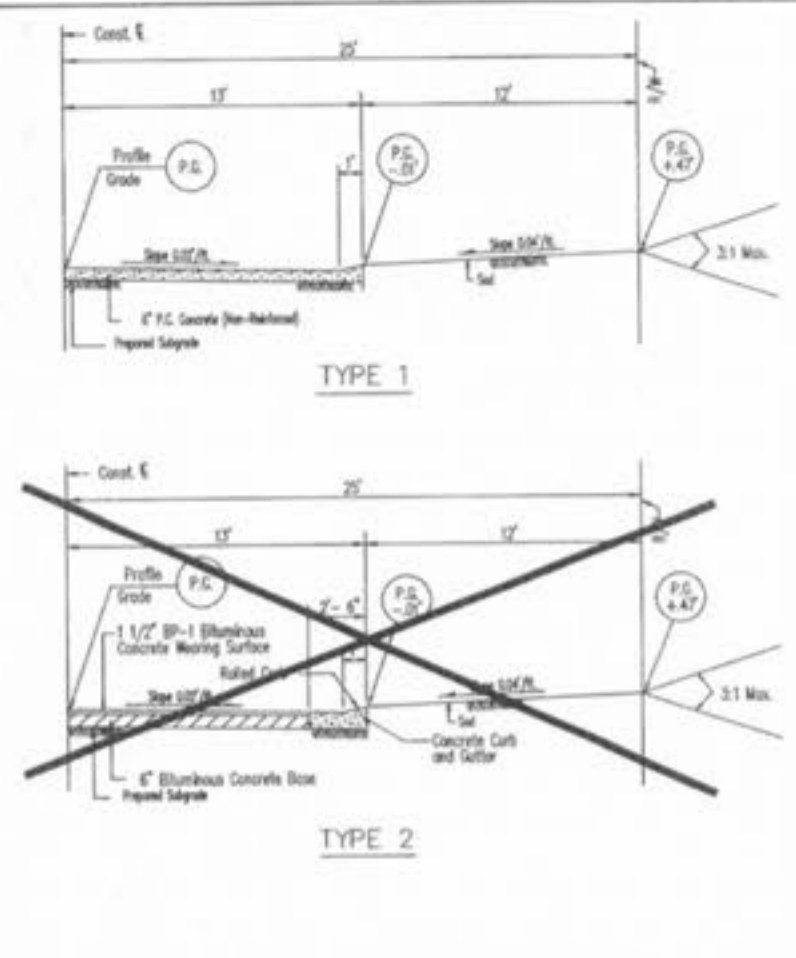
PAVEMENT DETAILS
THE ENCLAVE AT DEER CREEK
 02-11841 NOVEMBER, 2004



GENERAL NOTES

1. Do not scale drawing. Follow dimensions.
2. Sections shown are approximate. Actual construction may vary.
3. For longitudinal and transverse joints, dowel bars shall be provided. See Standard Typical Section for details.
4. All expansion joint materials shall be in accordance with the manufacturer's instructions.
5. Sections shown may not apply to intersections.
6. Slope shall be as shown on the plan.
7. Expansion joints shall be installed in accordance with the manufacturer's instructions.
8. See Standard Typical Section for details.

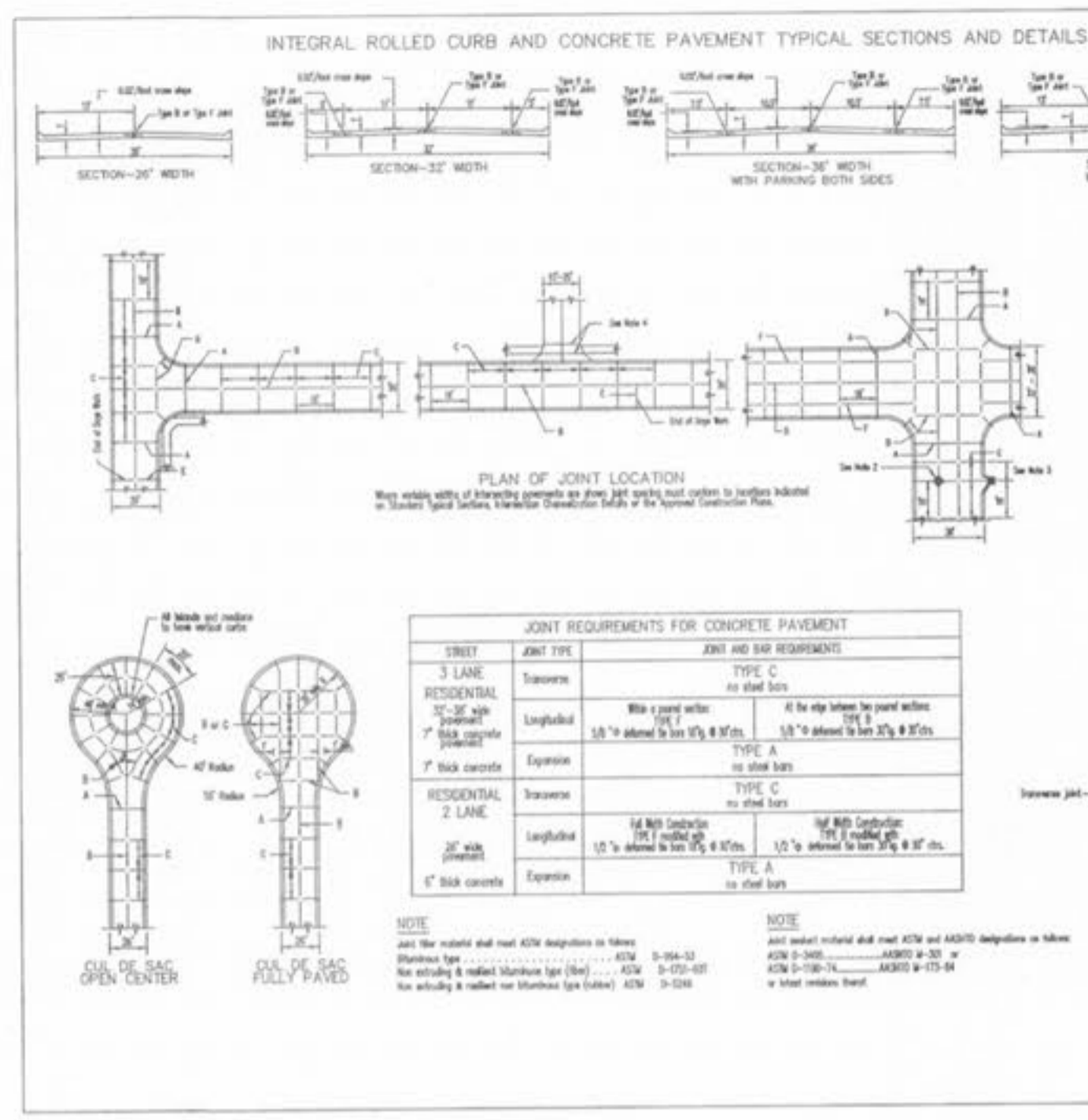
SAINT CHARLES COUNTY
 HIGHWAY DEPARTMENT
 ST. CHARLES, MISSOURI
 STANDARD TYPICAL SECTION
RESIDENTIAL
 50' R/W 26' PAVT.
 DATE: May 2002 DRAWING: C203.82A



GENERAL NOTES

1. Do not scale drawing. Follow dimensions.
2. Sections shown are approximate. Actual construction may vary.
3. For longitudinal and transverse joints, dowel bars shall be provided. See Standard Typical Section for details.
4. All expansion joint materials shall be in accordance with the manufacturer's instructions.
5. Sections shown may not apply to intersections.
6. Slope shall be as shown on the plan.
7. Expansion joints shall be installed in accordance with the manufacturer's instructions.
8. See Standard Typical Section for details.

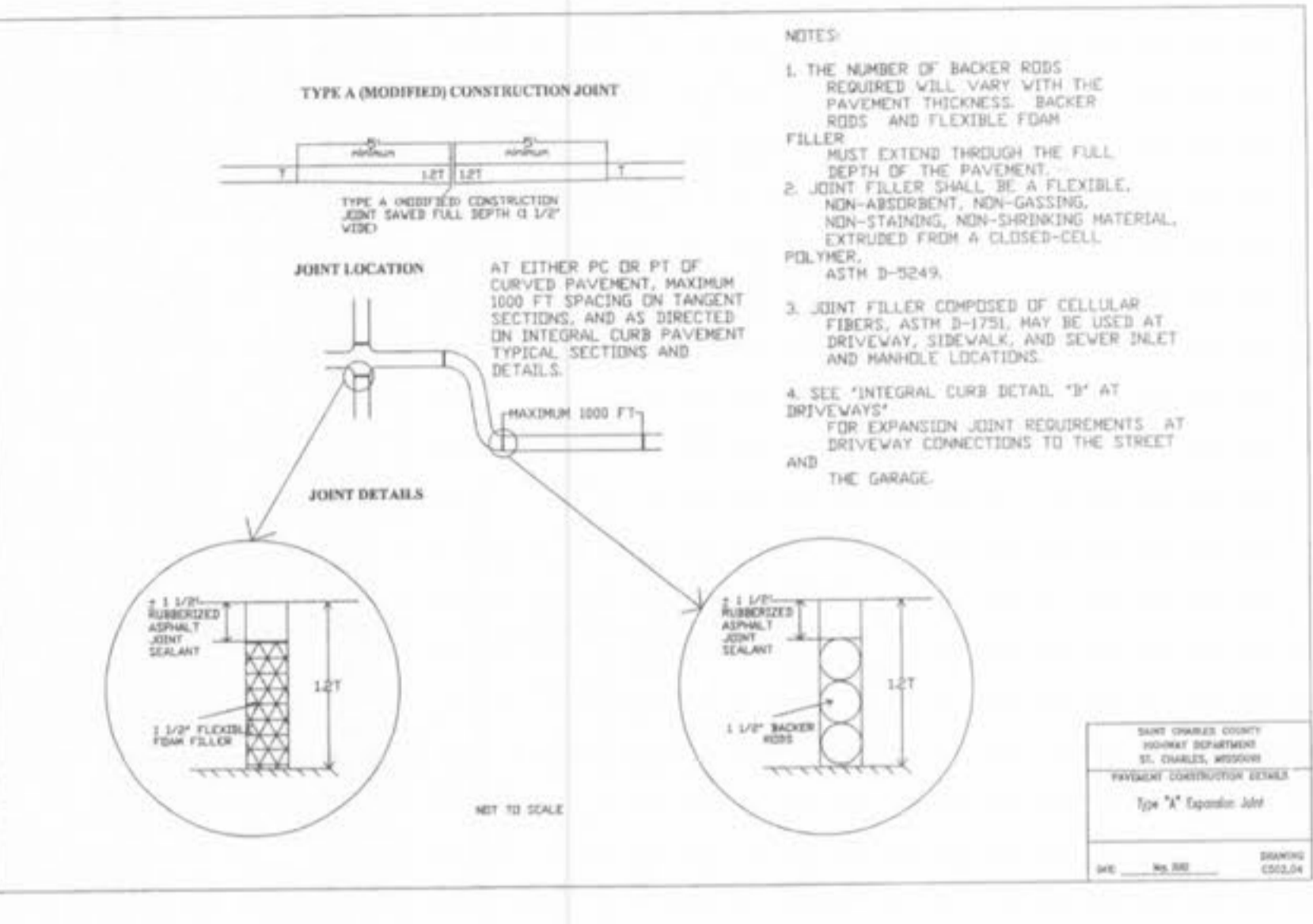
SAINT CHARLES COUNTY
 HIGHWAY DEPARTMENT
 ST. CHARLES, MISSOURI
 STANDARD TYPICAL SECTION
RESIDENTIAL
 50' R/W 26' PAVT.
 DATE: May 2002 DRAWING: C203.82B



GENERAL NOTES

1. Do not scale drawing. Follow dimensions.
2. All steel shall be separated from the pavement and shall be protected with a non-staining, non-shrinking material.
3. When a joint is located in a curb, the curb shall be constructed in accordance with the manufacturer's instructions.
4. Expansion joints shall be installed in accordance with the manufacturer's instructions.
5. See Standard Typical Section for details.

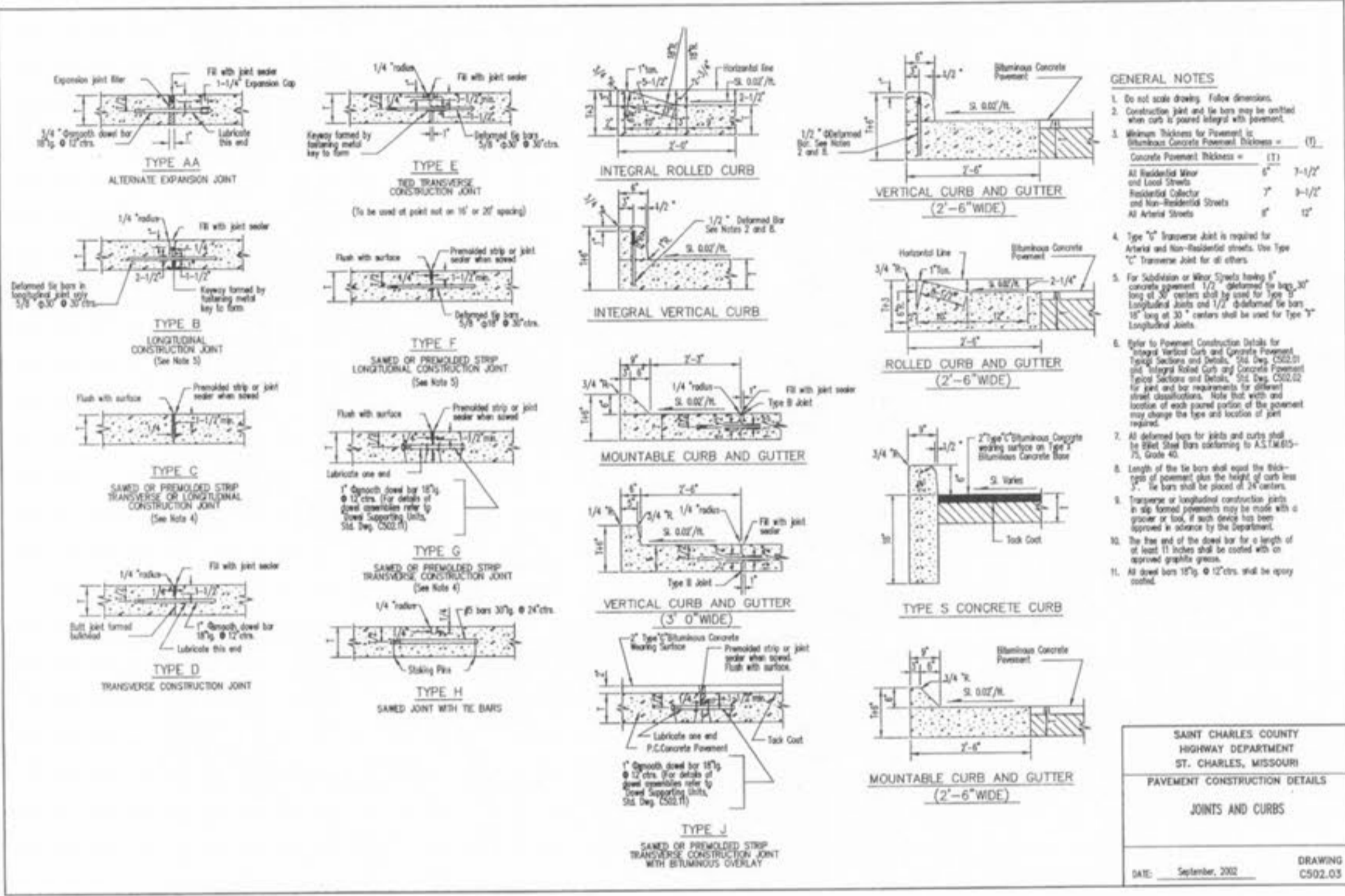
SAINT CHARLES COUNTY
 HIGHWAY DEPARTMENT
 ST. CHARLES, MISSOURI
 STANDARD TYPICAL SECTION
RESIDENTIAL
 50' R/W 26' PAVT.
 DATE: May 2002 DRAWING: C203.82C



GENERAL NOTES

1. The number of backer rods required will vary with the pavement thickness. Backer rods and flexible foam filler must extend through the full depth of the pavement.
2. Joint filler shall be a flexible, non-absorbent, non-gassing, non-staining, non-shrinking material, extruded from a closed-cell polymer, ASTM D-5249.
3. Joint filler composed of cellular fibers, ASTM D-1751, may be used at driveway, sidewalk, and sewer inlet and manhole locations.
4. See "Integral Curb Detail 'B' at Driveways" for expansion joint requirements at driveway connections to the street and the garage.

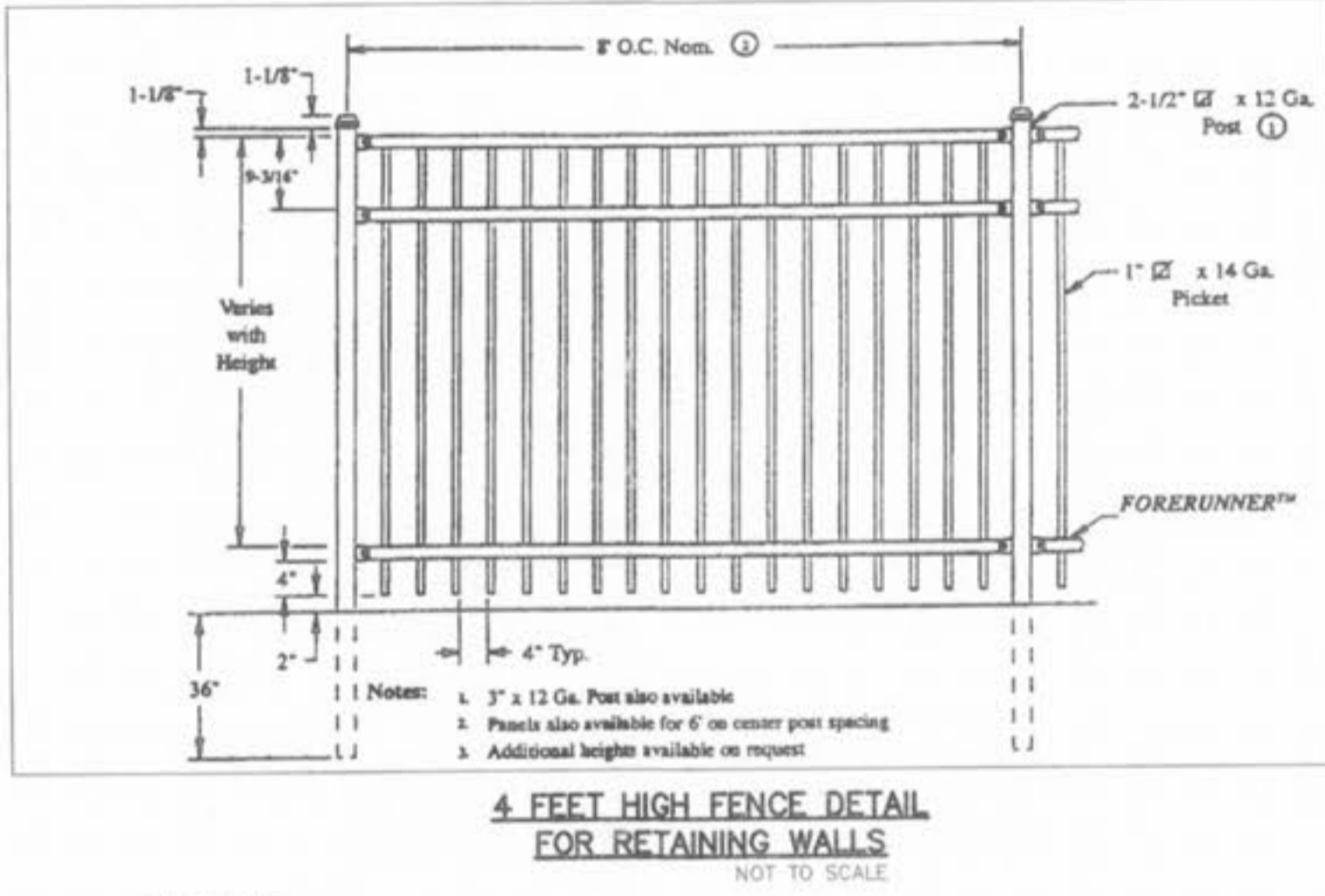
SAINT CHARLES COUNTY
 HIGHWAY DEPARTMENT
 ST. CHARLES, MISSOURI
 STANDARD TYPICAL SECTION
RESIDENTIAL
 50' R/W 26' PAVT.
 DATE: May 2002 DRAWING: C203.82D



GENERAL NOTES

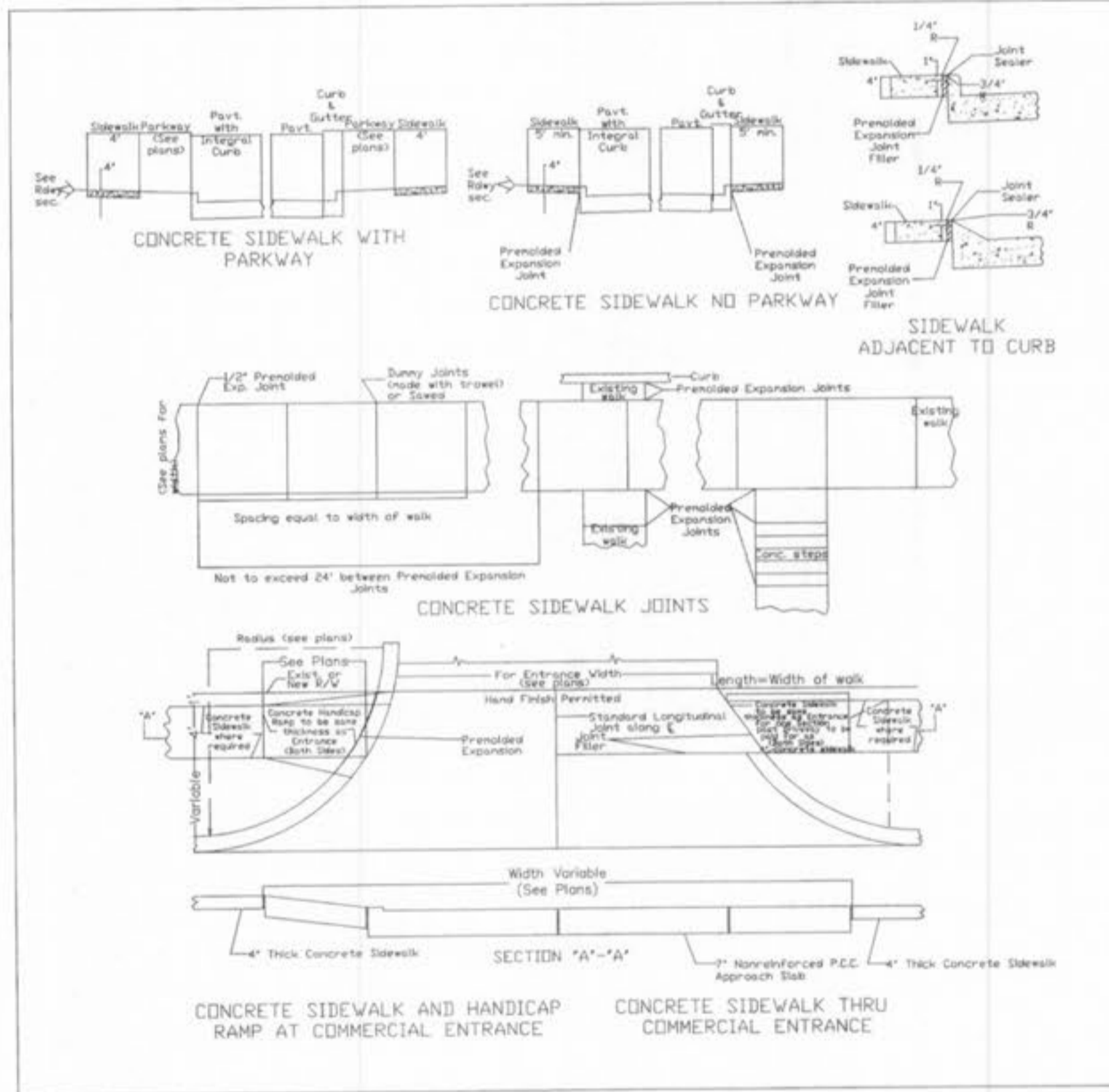
1. Do not scale drawing. Follow dimensions.
2. Sections shown are approximate. Actual construction may vary.
3. For longitudinal and transverse joints, dowel bars shall be provided. See Standard Typical Section for details.
4. All expansion joint materials shall be in accordance with the manufacturer's instructions.
5. Sections shown may not apply to intersections.
6. Slope shall be as shown on the plan.
7. Expansion joints shall be installed in accordance with the manufacturer's instructions.
8. See Standard Typical Section for details.

SAINT CHARLES COUNTY
 HIGHWAY DEPARTMENT
 ST. CHARLES, MISSOURI
 STANDARD TYPICAL SECTION
RESIDENTIAL
 50' R/W 26' PAVT.
 DATE: September 2002 DRAWING: C502.03



4 FEET HIGH FENCE DETAIL FOR RETAINING WALLS
 NOT TO SCALE

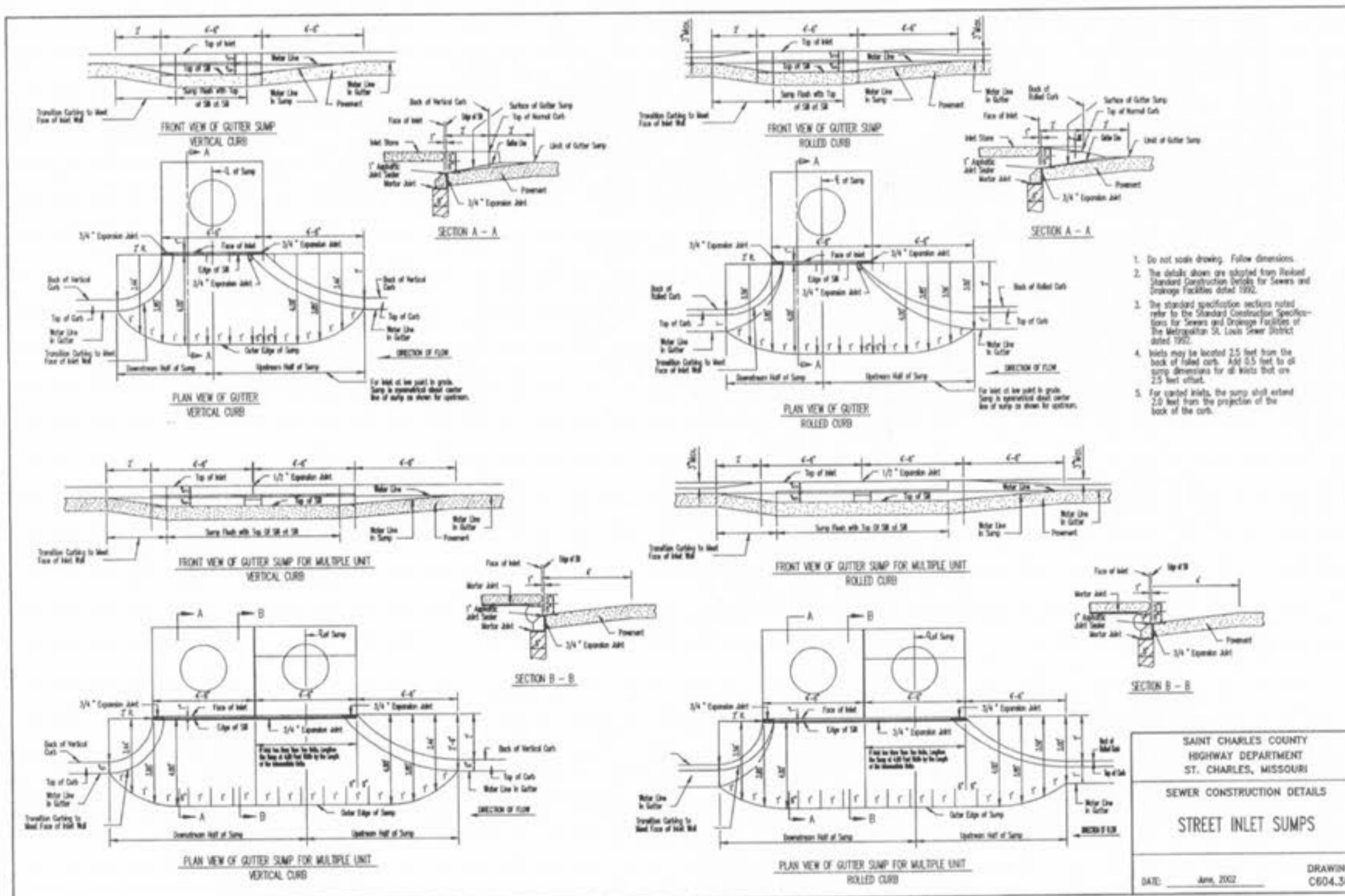
MATERIALS:
 The materials used for fence framing shall be manufactured from aluminum (designation 6063-T-52) with a yield strength of 25,000 p.s.i. tensile strength of 30,000 p.s.i. and a standard mill finish. The top rail shall be manufactured from aluminum (designation 6005-T-5) with a yield strength of 35,000 p.s.i., a tensile strength of 40,000 p.s.i. and a standard mill finish.



GENERAL NOTES

1. Do not scale drawing. Follow dimensions.
2. Sidewalk cross slope 3/8"/ft.
3. Sidewalk thickness increases to 6" on each side of Private Driveways and 7" on each side of Commercial Driveways for one section of sidewalk equal in length to the width of the sidewalk. See "Entrance Construction Details".
4. Sidewalk thru private and commercial driveways will be post for 6" and 7" approaches, see "Integral Curb Detail 'B' at Driveways".
5. For sidewalk locations on Cut-De-Sacs see "Pavement Construction Details".
6. For longitudinal and transverse joints, dowel bars shall be provided. See Standard Typical Section for details.
7. All necessary pavement by St. Charles County.
8. For roadway cross slopes, pavement types, and thickness, refer to "Standard Typical Section".
9. See "Integral Curb Detail 'B' at Driveways" for precast expansion joint requirements.

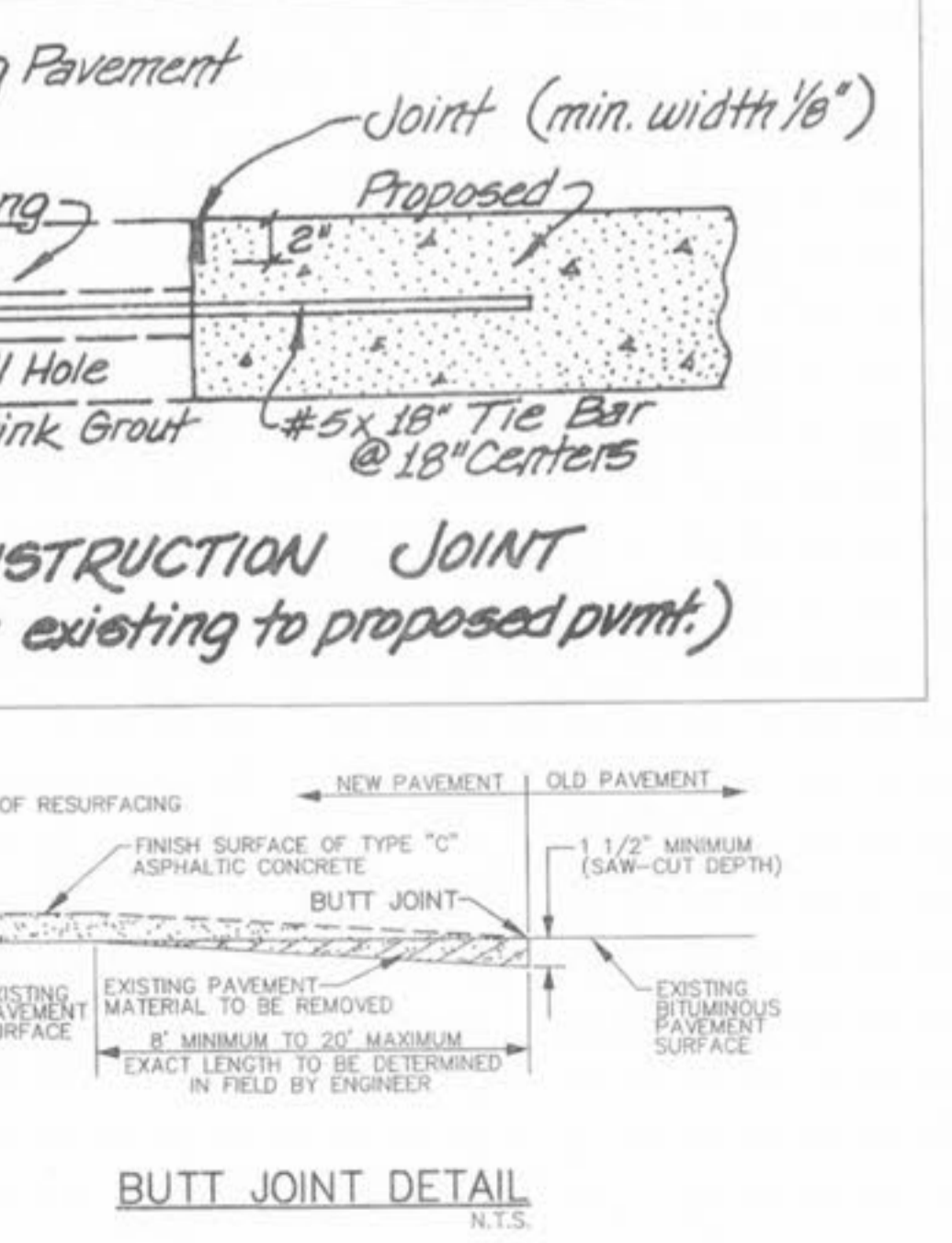
SAINT CHARLES COUNTY
 HIGHWAY DEPARTMENT
 ST. CHARLES, MISSOURI
CONCRETE SIDEWALK
 DATE: October, 2002 DRAWING: C608.14



GENERAL NOTES

1. Do not scale drawing. Follow dimensions.
2. The details shown are typical. Field conditions may vary.
3. The standard specification sections apply to the standard construction details shown.
4. See Standard Typical Section for details.

SAINT CHARLES COUNTY
 HIGHWAY DEPARTMENT
 ST. CHARLES, MISSOURI
SEWER CONSTRUCTION DETAILS
STREET INLET SUMPS
 DATE: June 2002 DRAWING: C504.36



CONSTRUCTION JOINT (from existing to proposed pvtmt.)



INTEGRAL CURB DETAIL 'B' AT DRIVEWAYS

NOTES

1. A 1" joint is required at the curb and garage for all driveways located on the outer edge of curved pavement unless grooved joints are used at sidewalk. Then a 2" joint is required at curb.
2. A 1/2" joint is required at the curb and garage for all driveways located on tangent sections of pavement or the inner edge of curved pavement.
3. Expansion joint material must extend through the full depth of the pavement.
4. Sidewalk thickness shall be a minimum of 7" through commercial driveways.

SAINT CHARLES COUNTY
 HIGHWAY DEPARTMENT
 ST. CHARLES, MISSOURI
 RICHARD L. FRANCIS
 LICENSE NUMBER E-25861
 REGISTERED PROFESSIONAL ENGINEER

UNDERGROUND UTILITIES HAVE BEEN PLOTTED FROM AVAILABLE INFORMATION AND THEREFORE THEIR LOCATIONS SHALL BE CONSIDERED APPROXIMATE ONLY. THE VERIFICATION OF THE LOCATION OF ALL UNDERGROUND UTILITIES, EITHER SHOWN OR NOT SHOWN ON THESE PLANS SHALL BE THE RESPONSIBILITY OF THE CONTRACTOR, AND SHALL BE LOCATED PRIOR TO ANY GRADING OR CONSTRUCTION OF THE IMPROVEMENTS.