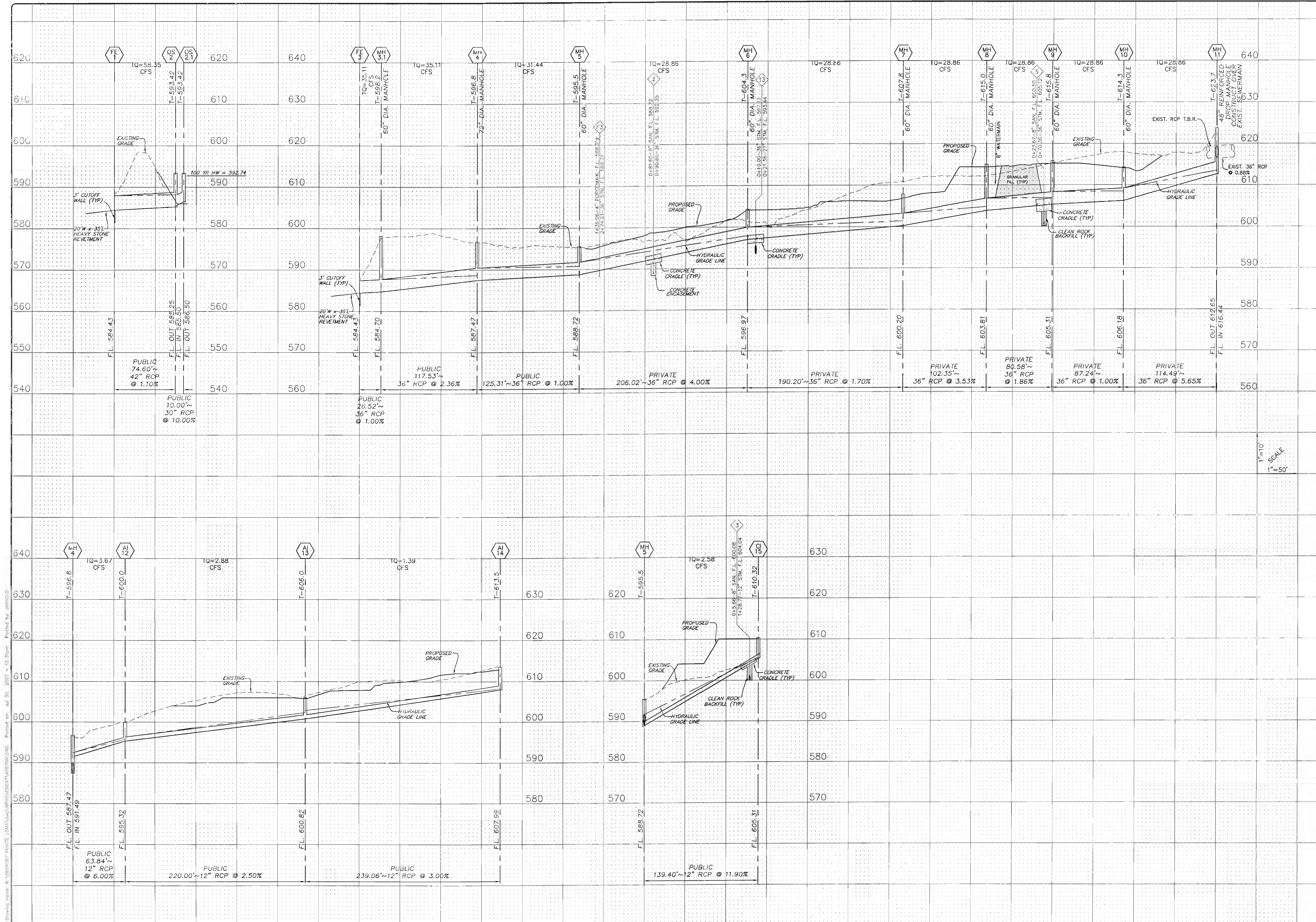


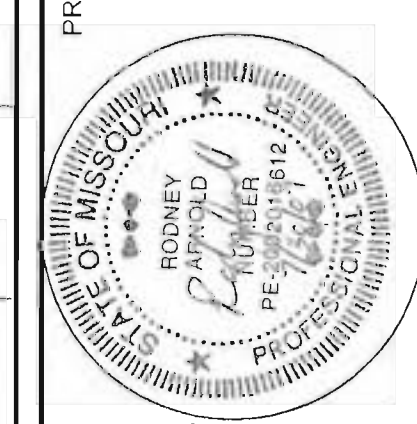
Drawing name: K:\PROJECTS\ENCLAVE POINT\DWG\STORM\ENCLAVE POINT STORM PROFILES.DWG Plotted on: Jul 30, 2007 - 12:30pm Plotted by: JARRIED



ISSUE REMARKS/DATE

1	10-17-06 FIRST SUBMITTAL
2	12-11-06 REVISED PER DCSO & PWSO #2 COMMENTS
3	12-28-06 REVISED PER ST. CHARLES CO. COMMENTS
4	01-25-07 REV. PER ST. CHARLES CO. & OFALCON
5	02-09-07 REVISED PER DCSO & PWSO #3 COMMENTS
6	06-29-07 REVISED PER DEVELOPER COMMENTS
7	07-20-07 REV. PER ST. CH. CO. DCSO & PWSO #2 COM#1

PREPARED FOR:
CROSS DEVELOPMENT OF MISSOURI INC.
 1609 PROSPECT VILLAGE DR.
 LAKE ST. LOUIS, MO. 63367
 314-713-4054



PREPARED BY:
THE STERLING CO.
 ENGINEERS & SURVEYORS
 505 N. FIFTH ST. SUITE 1000
 ST. LOUIS, MISSOURI 63102
 (314) 487-0440 FAX 487-8944
 E-Mail: Sterling@sterling-engr.com

PROJECT: **THE ENCLAVE AT SOMMERS POINTE**

DRAWN: _____ DESIGNED: _____ CHECKED: _____

SHEET TITLE: **STORM PROFILES**

NO	07	06	123
M.S.D.			SHEET
P#			6.1
DIGITAL FILE LOCATION			
DATE PLOTTED			
OF			

BASE MAP