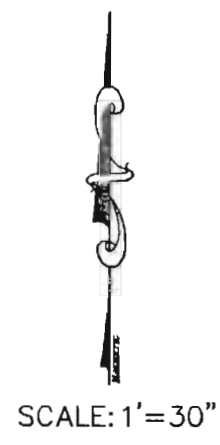
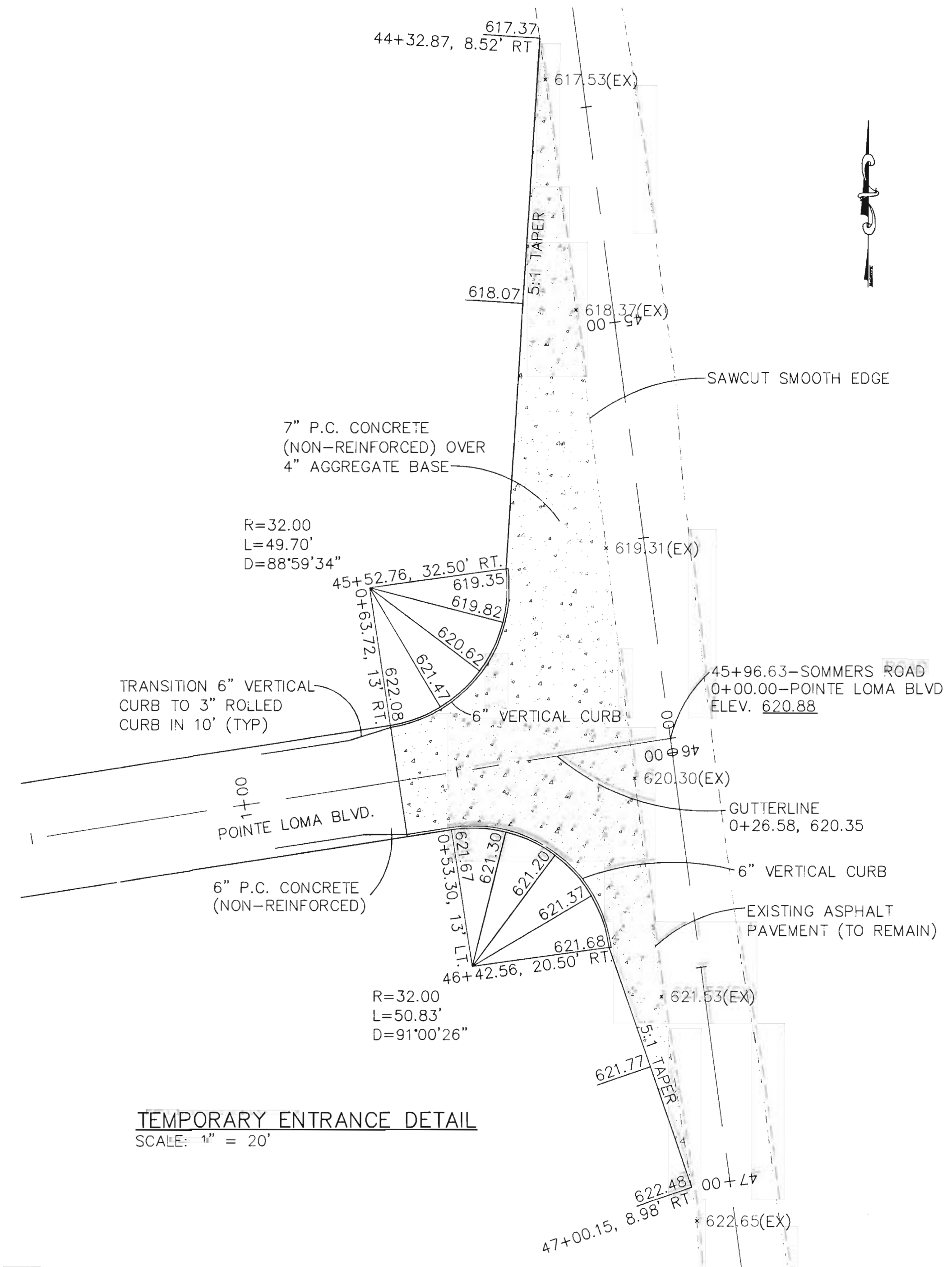
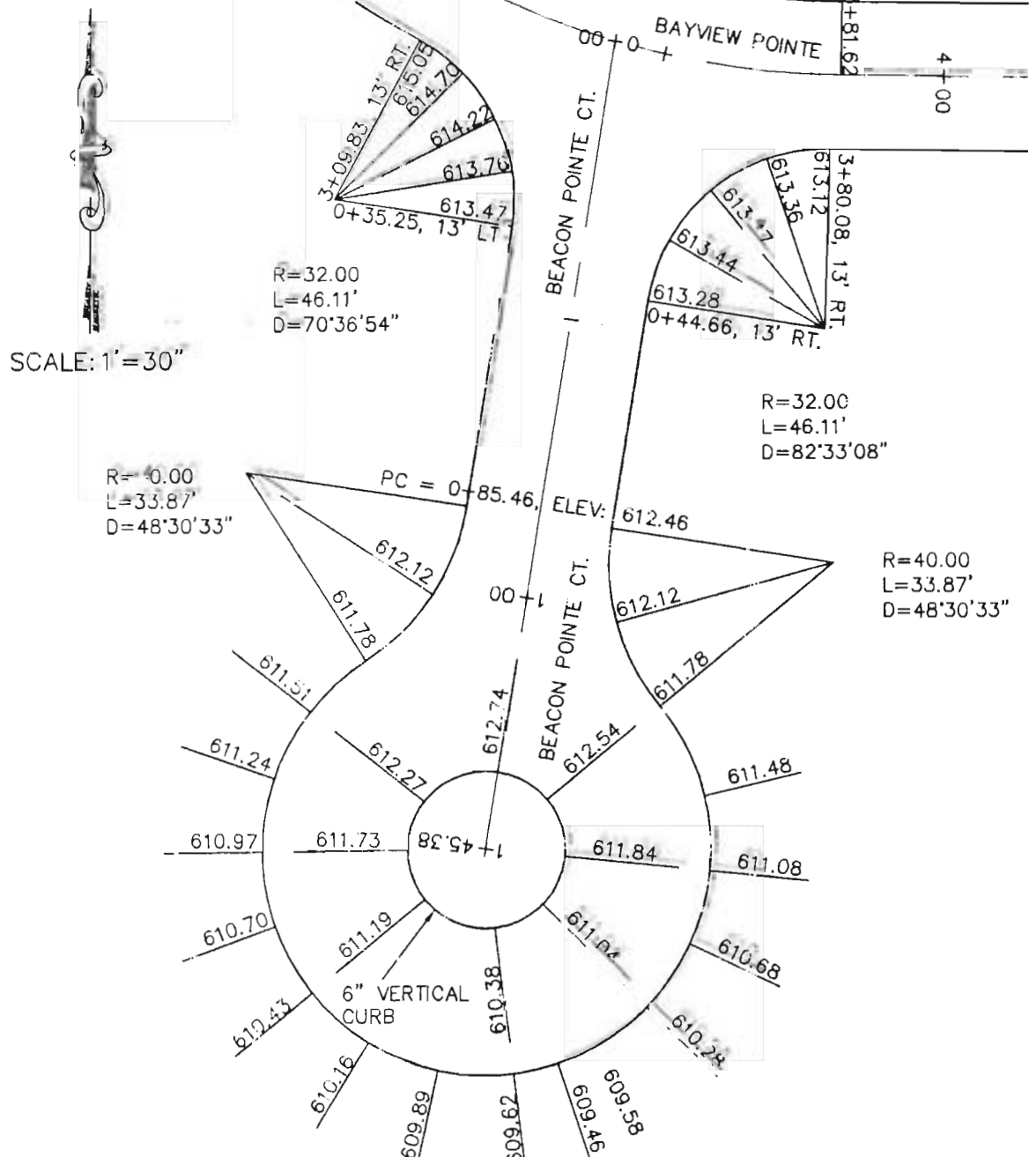
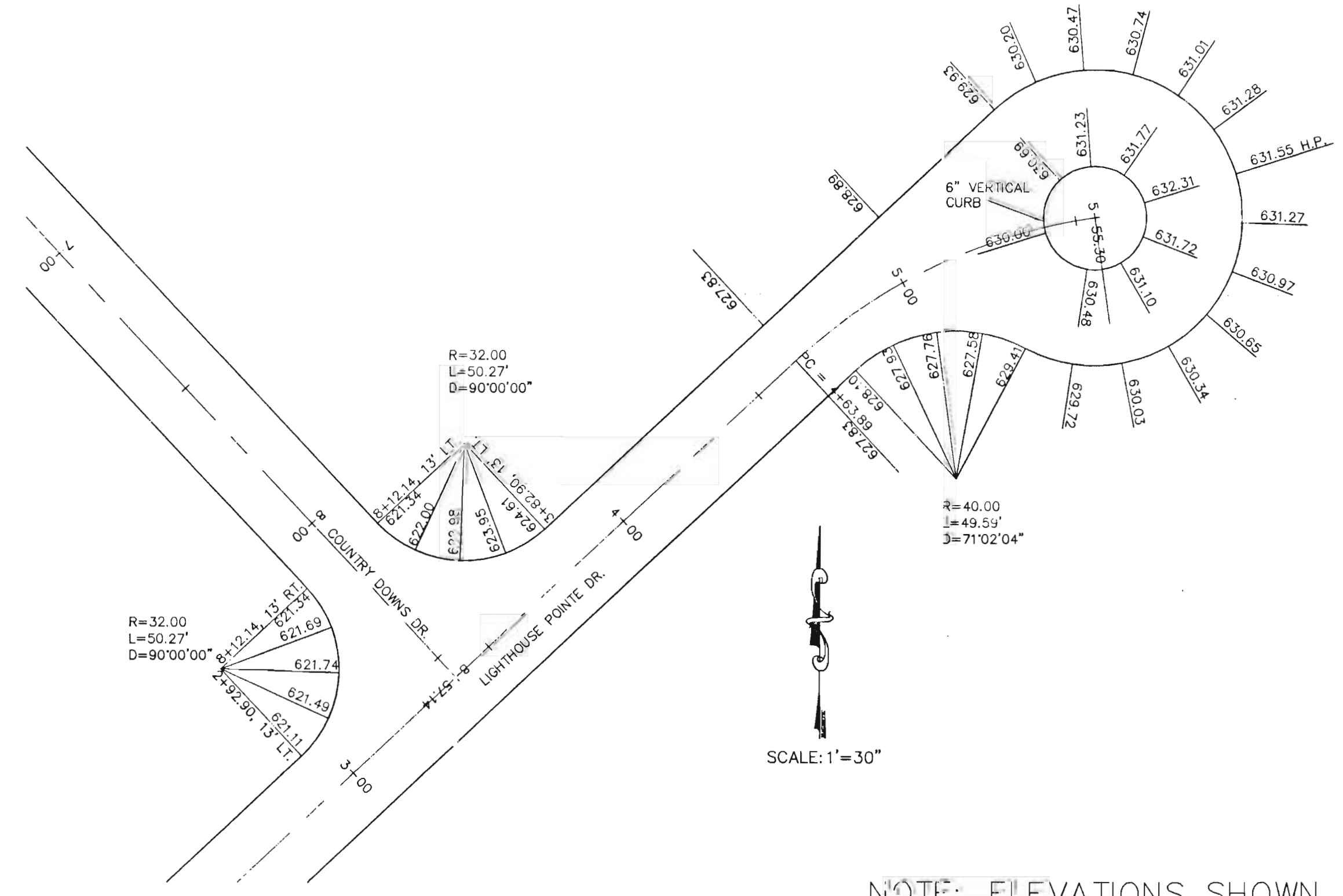
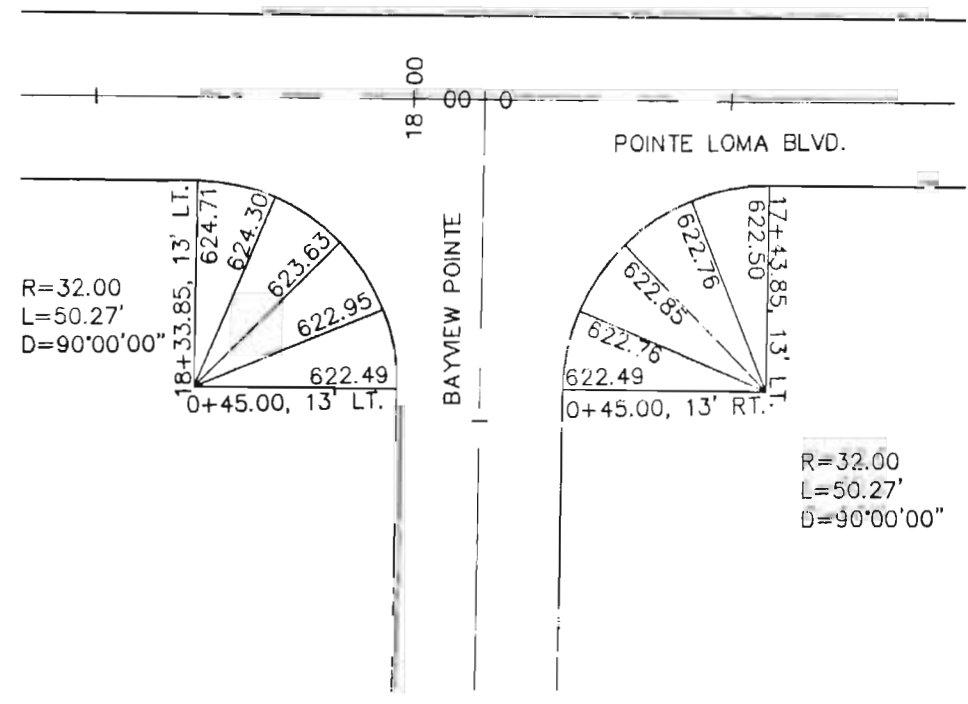
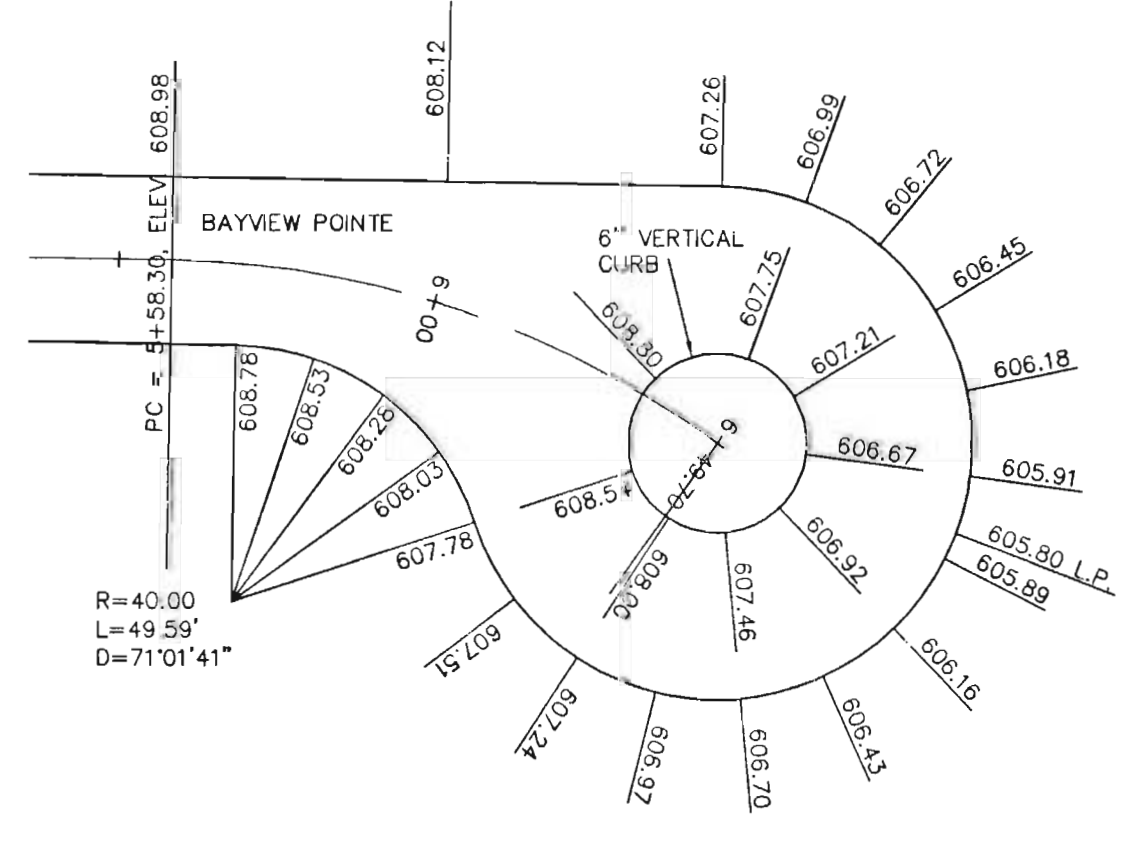
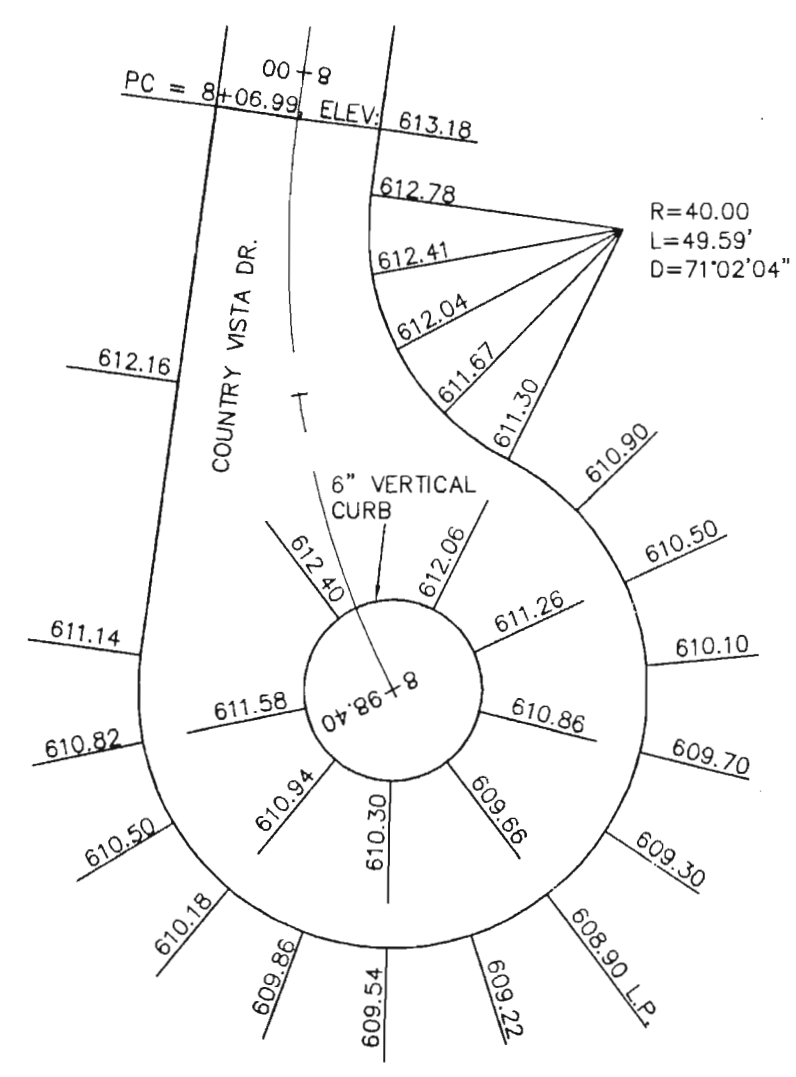
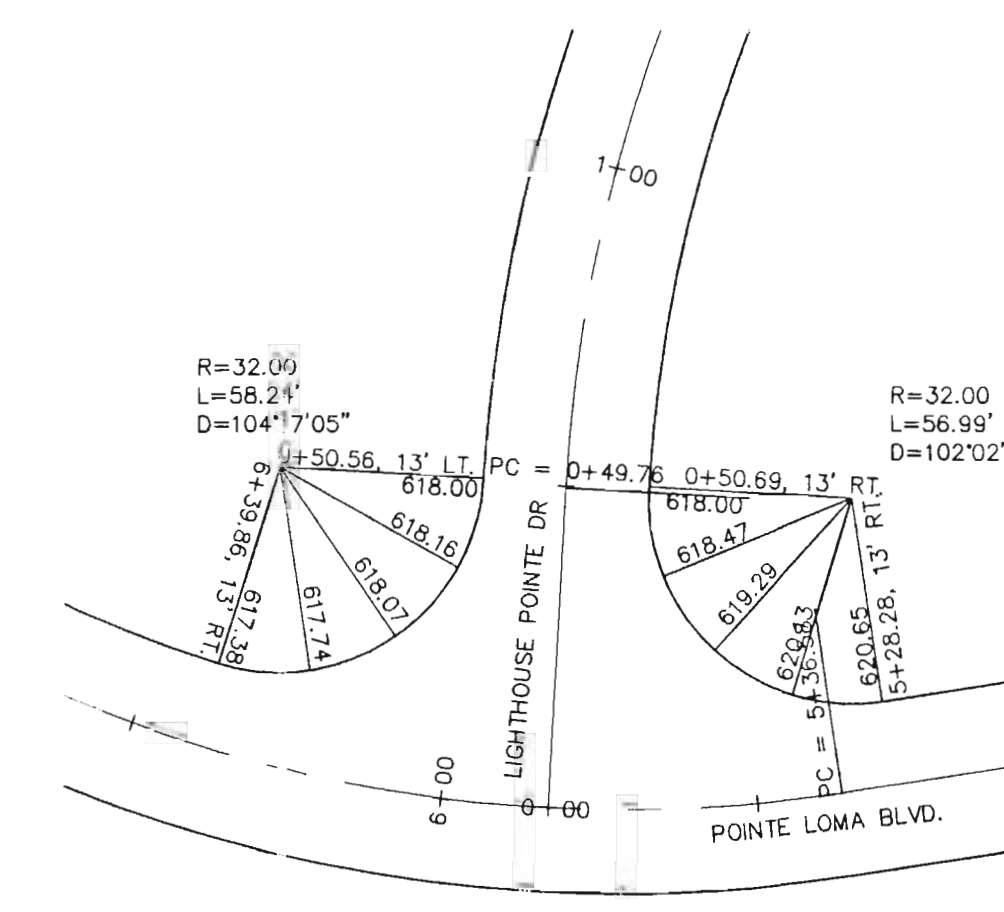
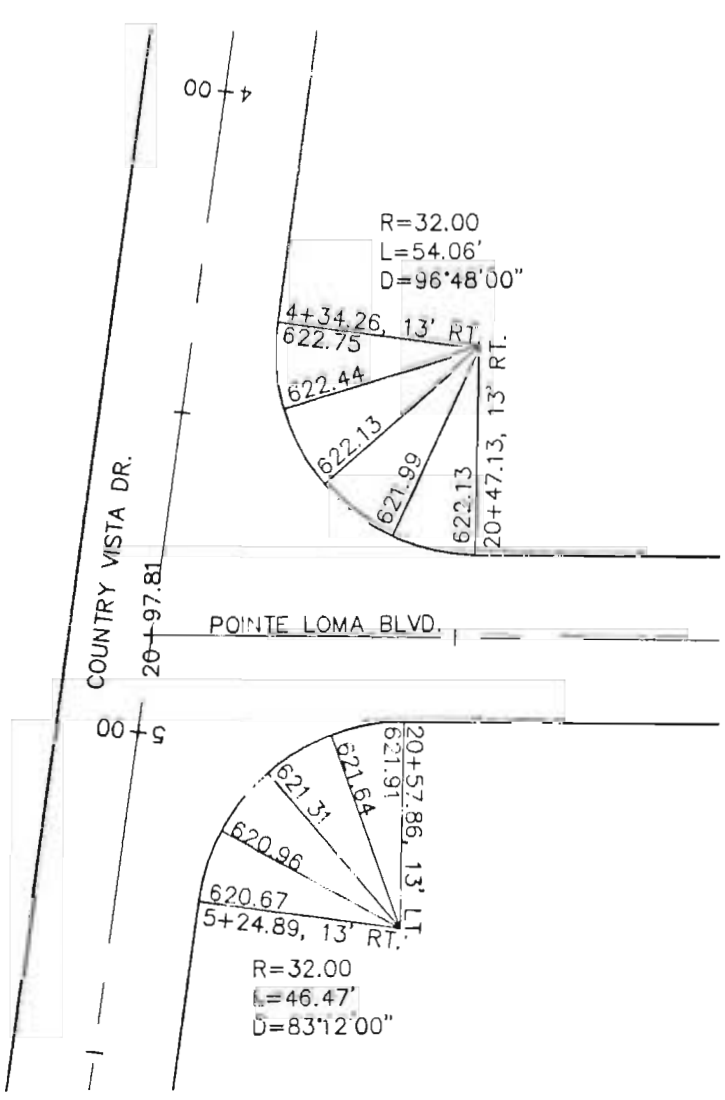
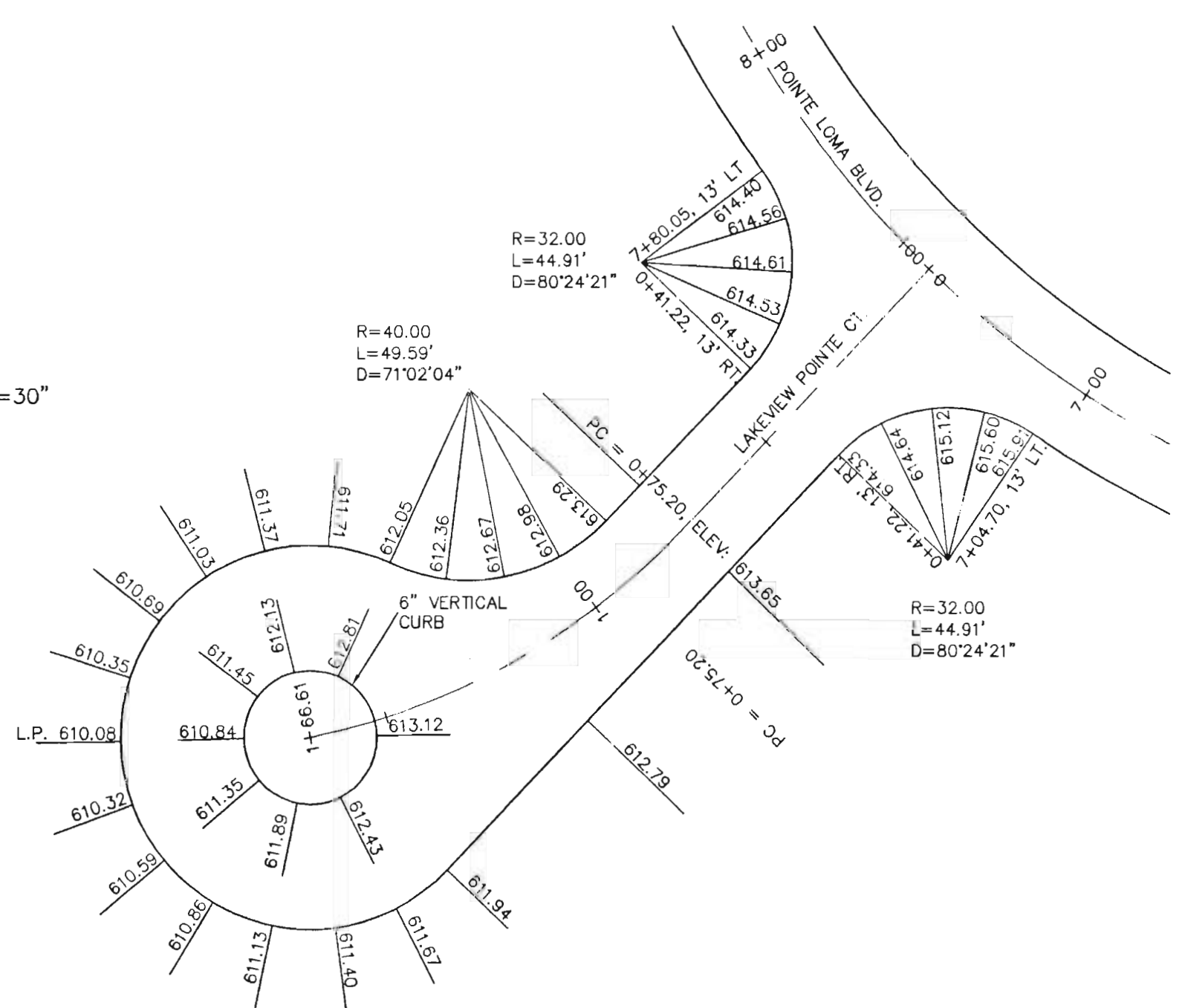


Drawn by: RAS/MAP; Checked by: RAS/MAP; Date: 07/06/10; Scale: 1"=20'; Project: 10-123; Title: THE ENCLAVE AT SOMMERS POINTE



SCALE: 1"=30"



SCALE: 1"=30"

SCALE: 1"=30"

TEMPORARY ENTRANCE DETAIL
SCALE: 1"=20"

NOTE: ELEVATIONS SHOWN ARE TO BACK OF CURB (UNLESS OTHERWISE NOTED)

ISSUE	REVISIONS/DATE
1	10-17-06 FIRST SUBMITTAL
2	12-11-08 REVISED PER BCS&P/MS/COMMENTS
3	12-28-08 REVISED PER ST. CHARLES CO. COMMENTS
4	01-25-07 REVISED PER ST. CHARLES CO. & OTTAWA
5	02-05-07 REVISED PER DCS&P/MS/COMMENTS
6	08-25-07 REVISED PER DEVELOPER COMMENTS
7	07-30-07 REVISED PER ST. CH. CO. DESIGN/MS/COMMENTS

PREPARED FOR:
CROSS DEVELOPMENT OF MISSOURI INC.
 1609 PROSPECT VILLAGE DR.
 LAKE ST. LOUIS, MO. 63367
 314-713-4054



PREPARED BY:
THE STERLING CO.
 ENGINEERS & SURVEYORS
 6051 W. JENNISON ROAD,
 ST. LOUIS, MISSOURI 63112
 (314) 487-0440 FAX: 487-9844
 E-Mail: Sterling@sterling-eng-survey.com

PROJECT: **THE ENCLAVE AT SOMMERS POINTE**
 DRAWN: [] DESIGNED: [] CHECKED: []
 SHEET TITLE: **TEMPORARY ENTRANCE MARKINGS**

NO.	07	06	123
M.S.D.			SHEET
P#			10.1
OF			