

LEGEND
 L.D. - NOMINAL PIPE SIZE
 O.D. - OUTSIDE DIAMETER OF PIPE
 H - COVER ABOVE TOP OF PIPE
 A - EMBEDDED BELOW PIPE (SEE TABLE)

TABLE OF EMBEDDED DEPTHS BELOW PIPE		
L.D.	A MIN. SOLE	A MIN. ROCK
27" & SMALLER	3"	6"

CLASS B
CLASS C
CLASS D
FLAT BOTTOM TRENCH WITH BELL HOLES AND HAND PLACED EMBEDDED

GRANULAR BEDDING SHALL BE CRUSHED ROCK OR PEA GRAVEL WITH NOT LESS THAN 85% PASSING 1/2" (85% PASSING 3/4" FOR 30" AND LARGER PIPE) AND NOT LESS THAN 85% RETAINED ON A #4; TO BE PLACED IN NOT MORE THAN 6" LAYERS AND COMPACTED BY SLICING WITH A SHOVEL OR VIBRATING.

COMPACTED BACK FILL SHALL BE FINELY DIVIDED JOB EXCAVATED MATERIAL FREE FROM DEBRIS, ORGANIC MATERIAL AND STONES, PLACED IN UNIFORM LAYERS NOT MORE THAN 6" THICK, COMPACTED TO 95% MAXIMUM DENSITY AS DETERMINED BY A.S.T.M. D698, OR GRADED AGGREGATE. GRANULAR BACK FILL MATERIAL MAY BE SUBSTITUTED FOR ALL OR PART OF COMPACTED BACK FILL.

TAMPED BACK FILL SHALL BE FINELY DIVIDED JOB EXCAVATED MATERIAL FREE FROM DEBRIS, ORGANIC MATERIAL AND STONES, HAND PLACED IN UNIFORM LAYERS NOT MORE THAN 6" THICK AND TAMPED AROUND CONDUIT PIPE. GRANULAR BACK FILL MATERIAL MAY BE SUBSTITUTED FOR ALL OR PART OF TAMPED BACK FILL.

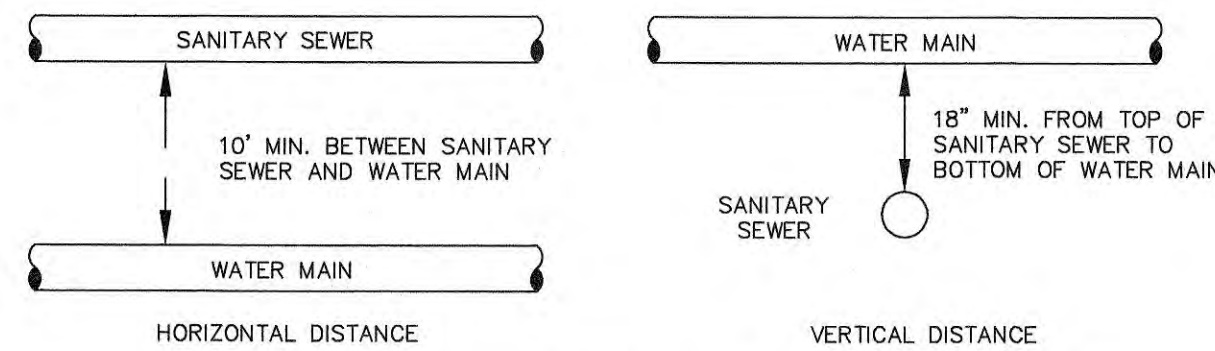
TRENCH BACK FILL SHALL BE AS REQUIRED IN THE "LAYING AND BACK FILL" SECTION OF THE DETAILED SPECIFICATIONS.

EMBEDDED THE TYPE OF EMBEDDED TO BE USED SHALL BE AS SPECIFIED IN THE PLANS AND SPECIFICATIONS.

TRACER WIRE REQUIRED ON ALL WATER MAINS

WATER MAIN EMBEDDED
 NOT TO SCALE

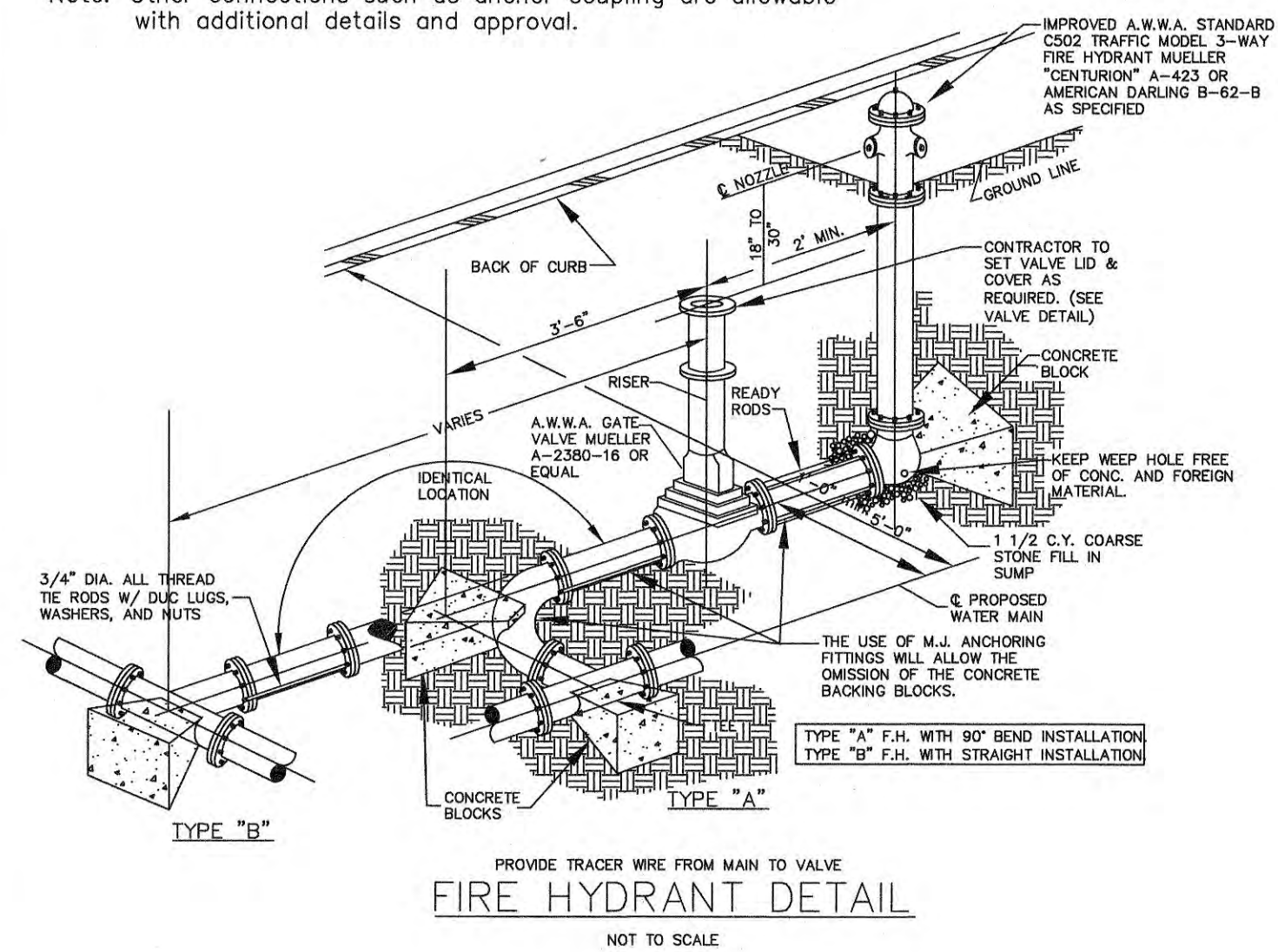
CITY OF O'FALLON
 ENGINEERING DEPARTMENT
 O'FALLON, MISSOURI
WATER MAIN EMBEDDED



TYPICAL WATER AND SEWER SEPARATION
 NOT TO SCALE

CITY OF O'FALLON
 ENGINEERING DEPARTMENT
 O'FALLON, MISSOURI
WATER AND SEWER SEPARATION DETAIL

Note: Other connections such as anchor coupling are allowable with additional details and approval.



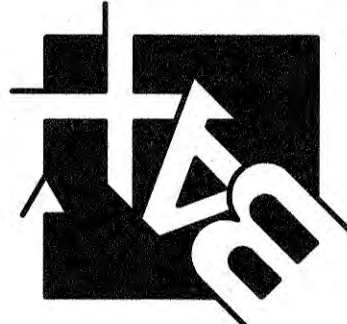
FIRE HYDRANT DETAIL
 NOT TO SCALE

CITY OF O'FALLON
 ENGINEERING DEPARTMENT
 O'FALLON, MISSOURI
FIRE HYDRANT DETAILS

PROJECT TITLE:
FALLON CREST TOWNHOMES

ENGINEERING
 PLANNING
 SURVEYING

221 Point View Blvd.
 St. Charles, MO 63001
 636-928-5662
 FAX 928-1718



REFERENCE DRAWINGS ONLY, ENGINEERS SEAL DOES NOT APPLY TO THESE DETAILS

REVISIONS

NO.	DATE	DESCRIPTION
8-15-19		city comments
9-3-19		city comments

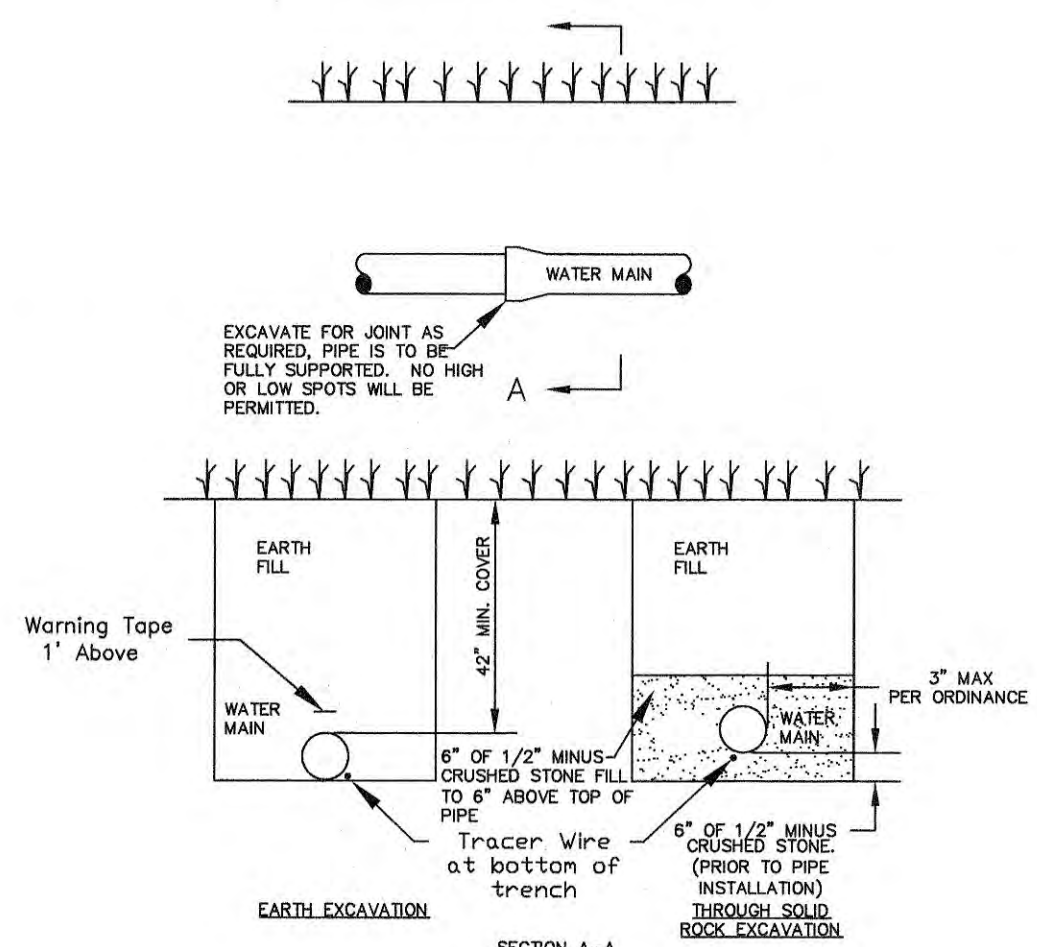
Developer / Owner:
 CORPORATE GROUP INC.
 2500 S. OLD HWY 94, SUITE 200
 ST. CHARLES, MO. 63903
 636-946-0761

WATER DETAILS

P+Z No. # 19-005136
 Approval Date: July 18, 2019

City No. #

Ductile Iron Pipe installation shall follow the Ductile Iron Research Association (DIPRA) guide line.
 The Installation of PVC Pipe shall follow the Uni-Bell PVC Pipe Association Handbook of PVC Design and Construction.



TYPICAL WATER MAIN INSTALLATION DETAILS
 NOT TO SCALE

CITY OF O'FALLON
 ENGINEERING DEPARTMENT
 O'FALLON, MISSOURI
WATER MAIN INSTALLATION DETAIL