

ENGINEERING
PLANNING
SURVEYING
281 Point West Blvd
St. Charles, MO 63301
636-926-6662
FAX 926-1718



REFERENCE DRAWINGS
ONLY; ENGINEERS
SEAL DOES NOT
APPLY TO THESE
DETAILS

REVISIONS	
8-15-19	city comments
9-3-19	city comments

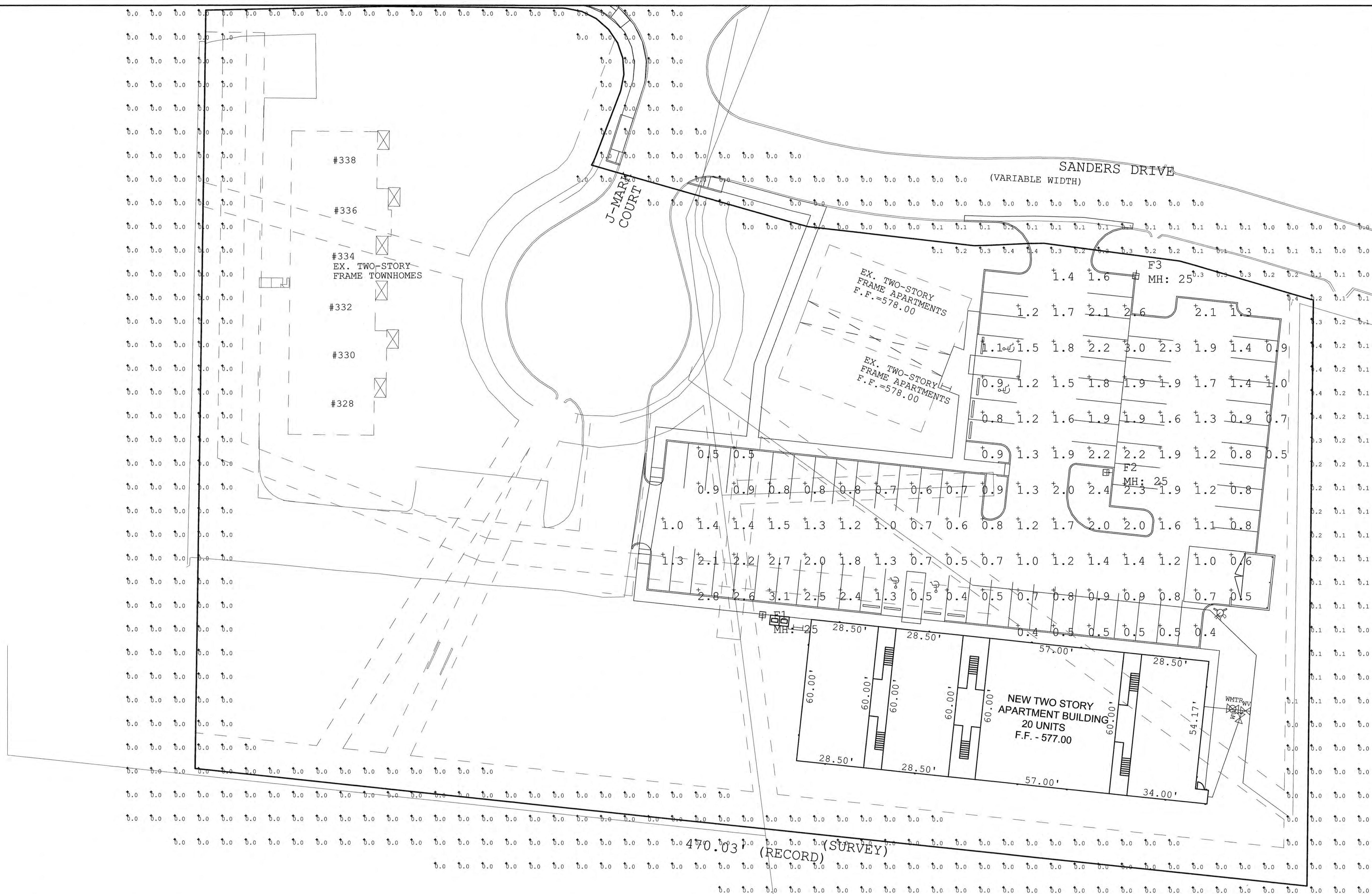
Developer / Owner:
CORPORATE GROUP INC.
2500 S. OLD HWY 94, SUITE 200
ST. CHARLES, MO. 63303
636-946-0761

PHOTOMETRIC PLAN

P+Z No. # 19-005136
Approval Date: July 18, 2019

City No. #

Page No.



FIXTURES MOUNTED ON 22'-6" POLE & 30" BASE
LIGHT LEVEL CALCULATED ON THE GROUND

Calculation Summary							
Label	CalcType	Units	Avg	Max	Min	Avg/Min	Max/Min
PARKING LOT	Illuminance	Fc	1.33	3.1	0.4	3.33	7.75
SPILL LIGHT	Illuminance	Fc	0.02	0.4	0.0	N.A.	N.A.

Luminaire Schedule							
Symbol	Qty	Label	Arrangement	Lum. Watts	Total Watts	LLF	Description
⊕	1	F1	SINGLE	166	166	0.912	GLEON-AF-03-LED-E1-SL4-HSS
⊕	1	F2	SINGLE	225	225	0.912	GLEON-AF-04-LED-E1-5WQ
⊕	1	F3	SINGLE	113	113	0.912	GLEON-AF-02-LED-E1-SL3-HSS

