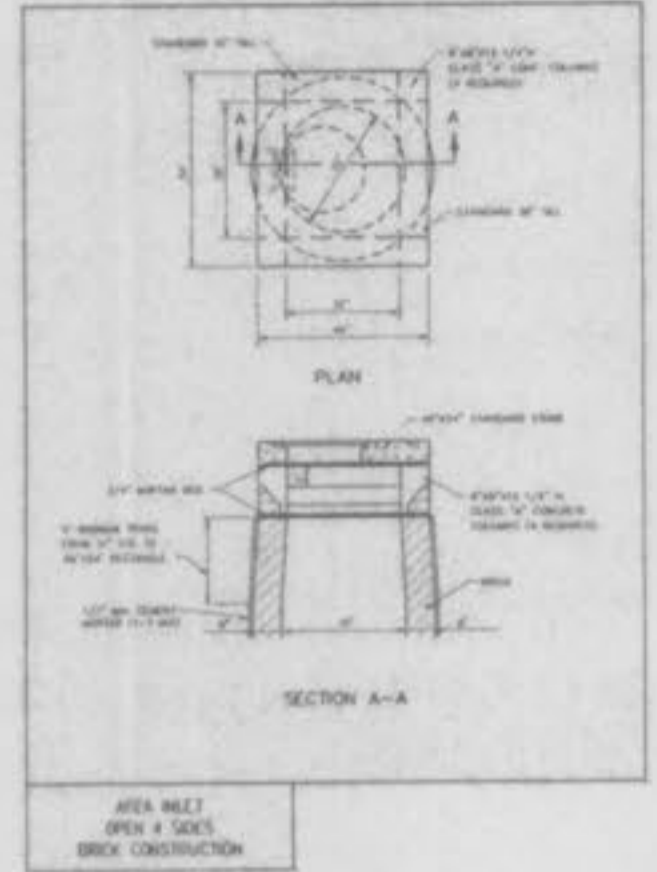
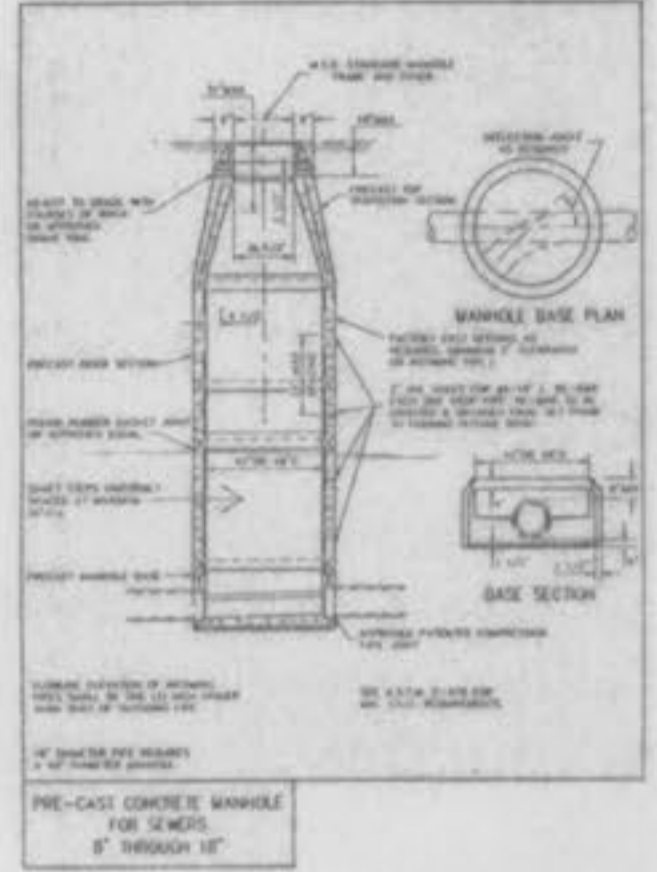


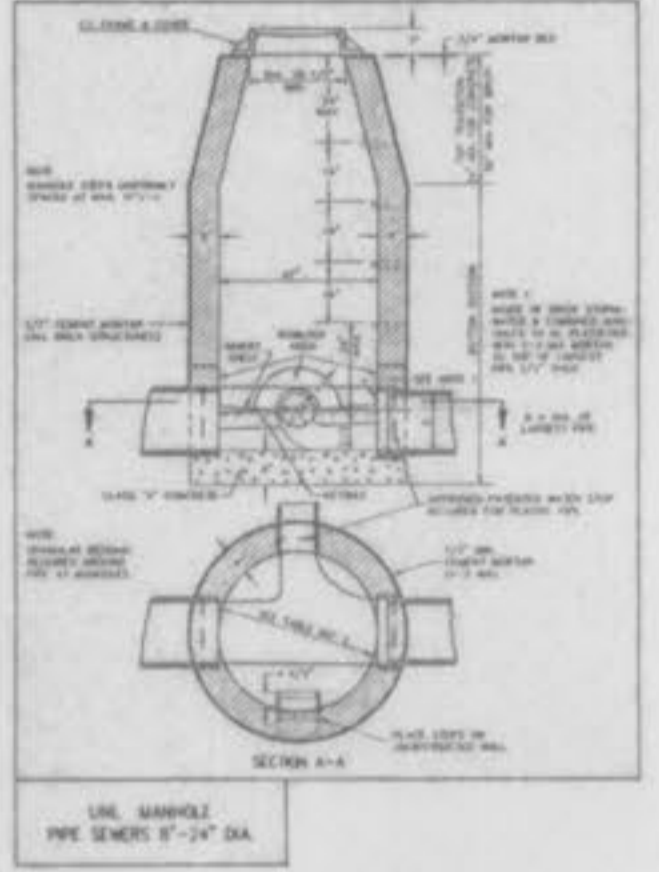
AREA INLET MANHOLE
(12" DIA. 24")



AREA INLET
OPEN 4 SIDES
BRICK CONSTRUCTION



PRE-CAST CONCRETE MANHOLE
FOR 24" DIA.
8" THROUGH 12"



LINE MANHOLE
PIPE 24" TO 36" DIA.



HANDICAP
PARKING
ONLY

12" X 18" SIGN

STANDARD SIGN FACE, STANDARD HIGHWAY
DEPARTMENT, OR CITY STREET DEPARTMENT
GAUGE, BLACK OR BLUE LETTERING,
GALVANIZED STEEL POST 9'-6" LONG, SET
3'-0" INTO GRADE, SET BOTTOM OF SIGN
5'-0" ABOVE FINISHED GRADE.

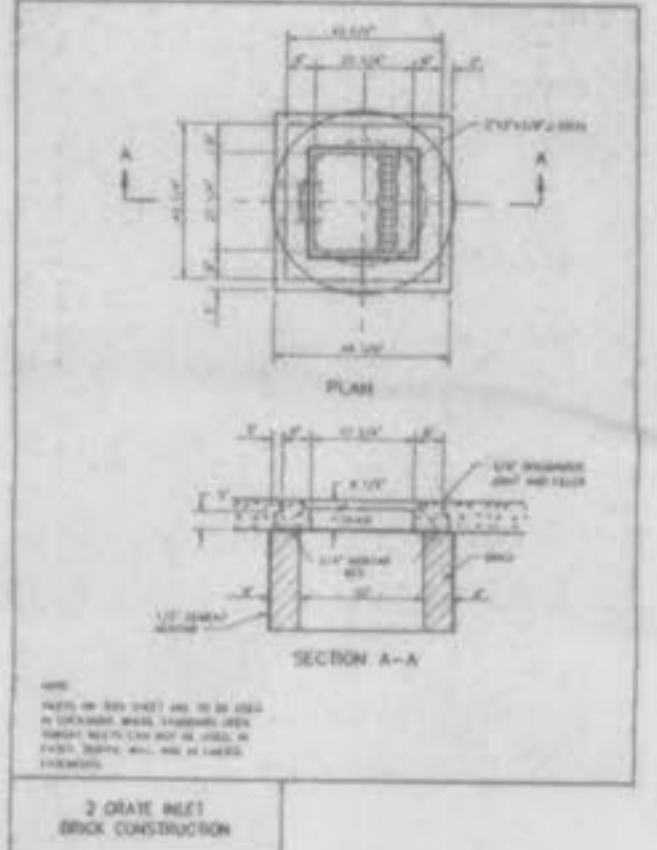
HANDICAP PARKING SIGN
NO SCALE

PRECAST CONCRETE STORMWATER STRUCTURES
MINIMUM STANDARD FINISHES TO TOP OF STRUCTURE IN PLACE

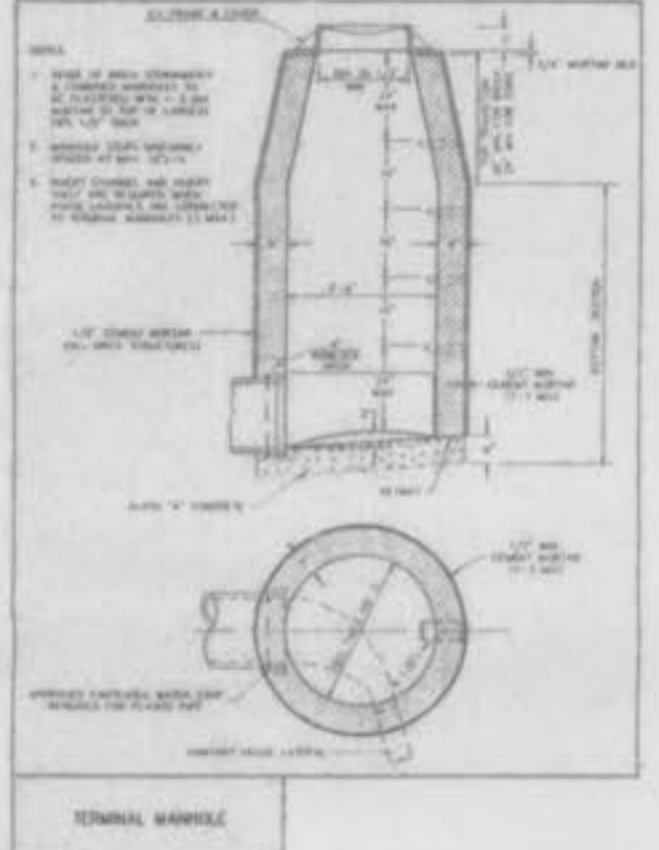
TYPE	MIN. THICKNESS	MIN. COMPRESSIVE STRENGTH	MIN. FINISH
1. WALLS	8"	4000 PSI	SMOOTH
2. CURBS	6"	4000 PSI	SMOOTH
3. BASES	8"	4000 PSI	SMOOTH
4. COVERS	4"	4000 PSI	SMOOTH
5. CHAMFERED EDGES	4"	4000 PSI	SMOOTH
6. JOINTS	4"	4000 PSI	SMOOTH
7. REINFORCING	4"	4000 PSI	SMOOTH

SEE SPEC. SECTION 05100 FOR MORE INFORMATION.

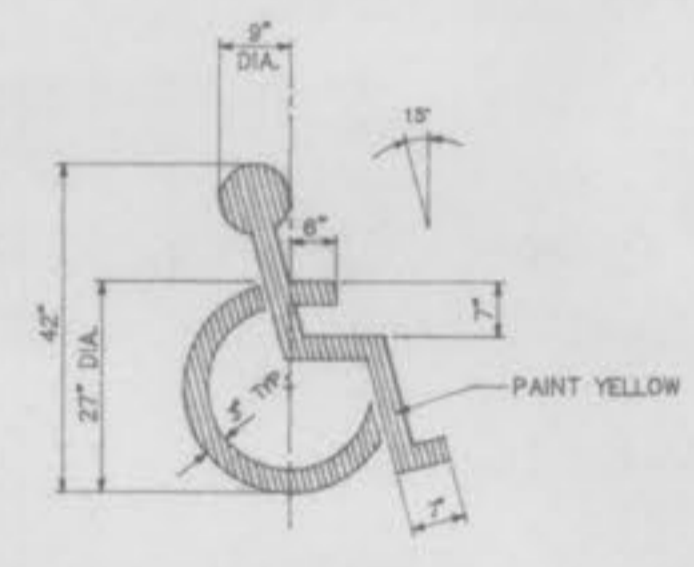
PRECAST CONCRETE
STORMWATER STRUCTURES



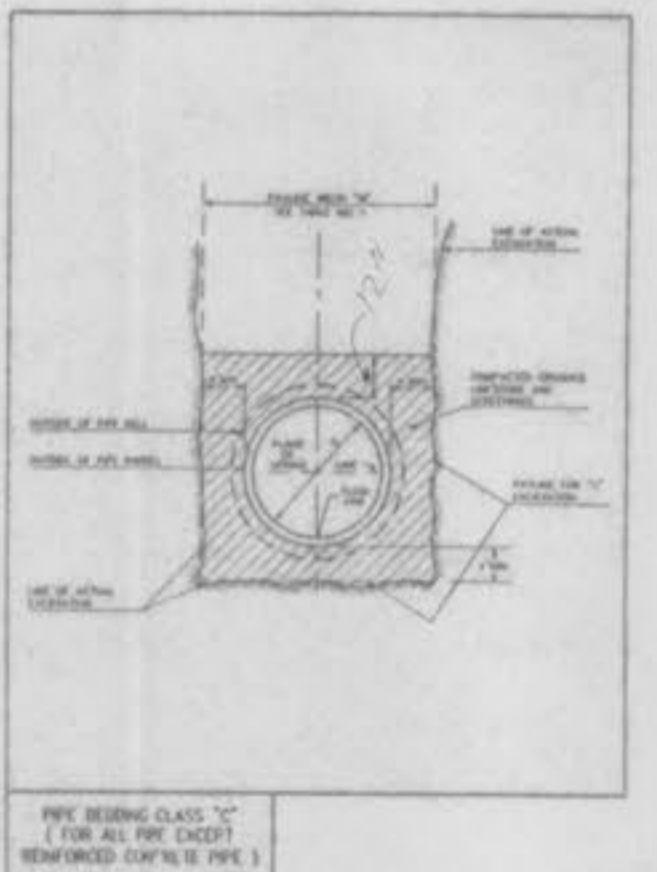
2 GRADE INLET
BRICK CONSTRUCTION



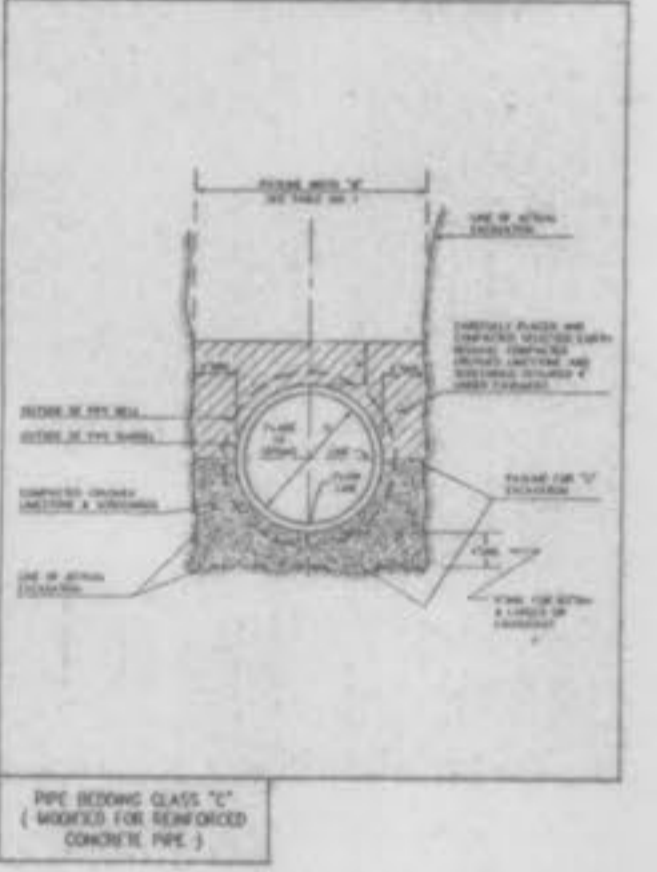
TERMINAL MANHOLE



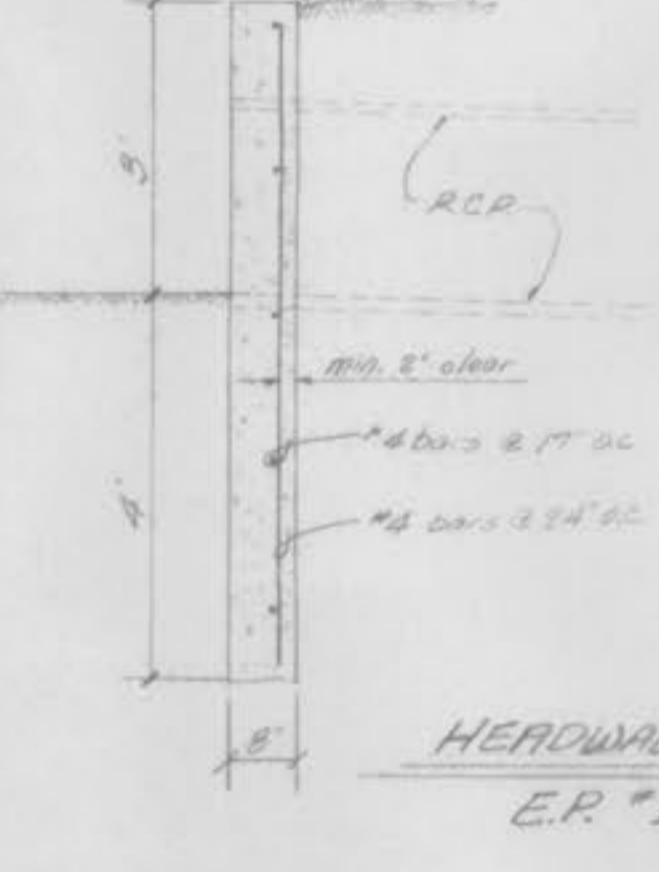
PAINTED HANDICAPPED
PARKING SYMBOL
NO SCALE



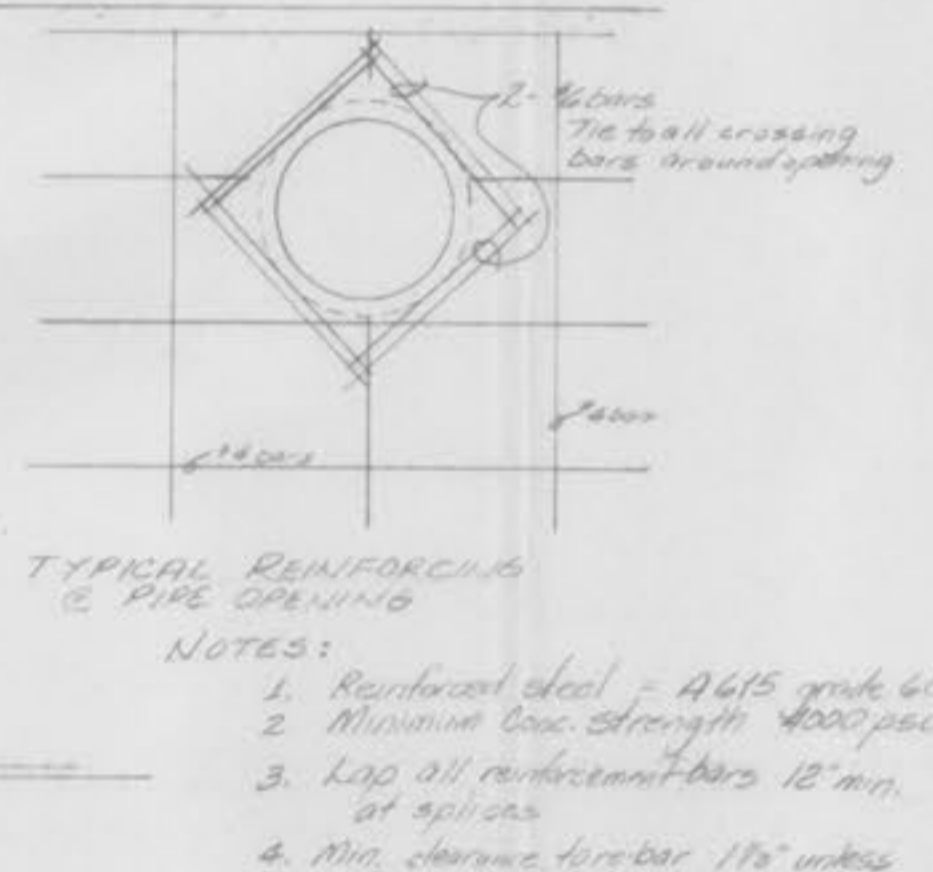
PIPE BEDDING CLASS "C"
(FOR ALL PIPE EXCEPT
REINFORCED CONCRETE PIPE)



PIPE BEDDING CLASS "C"
(WORKED FOR REINFORCED
CONCRETE PIPE)

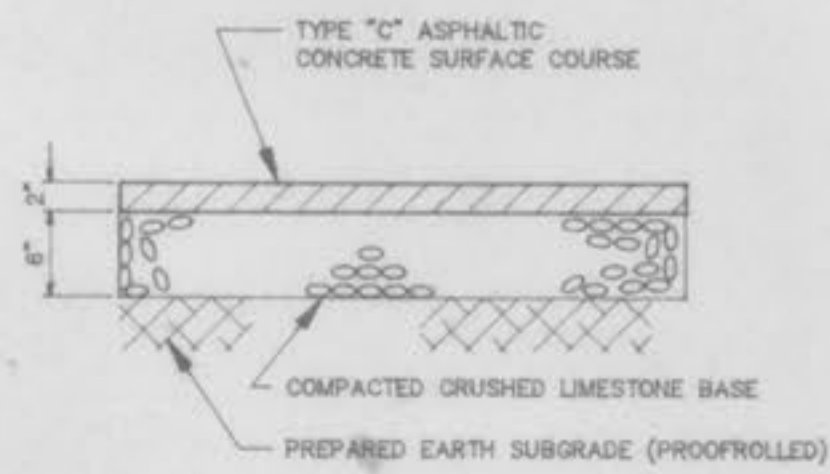


HEADWALL DETAIL
E.P. #106

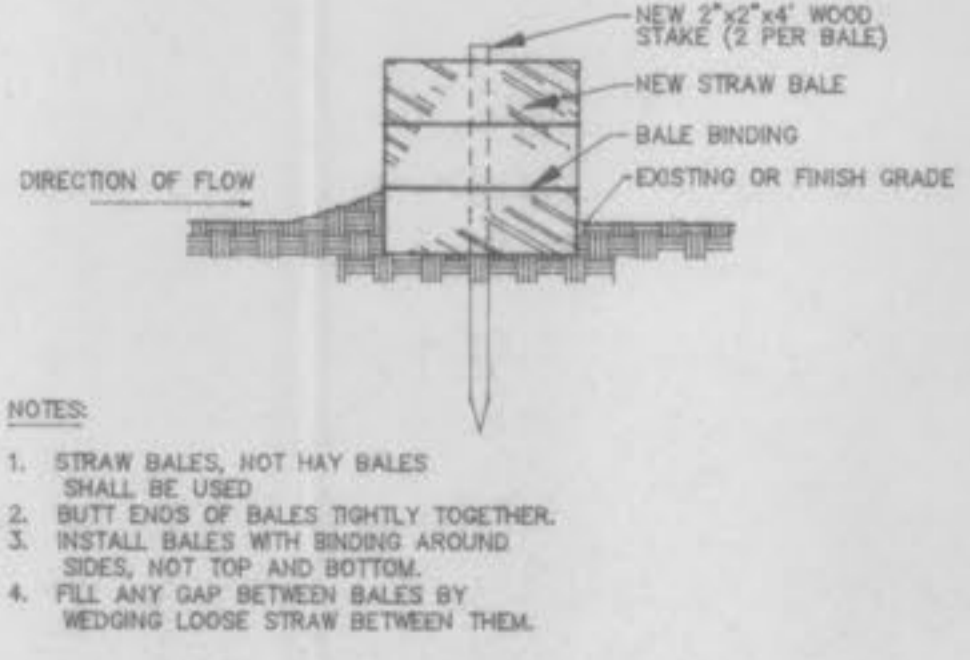


TYPICAL REINFORCING
@ PIPE OPENING

NOTES:
1. Reinforcement steel - A615 grade 60
2. Minimum conc. strength 4000 psi
3. Lap all reinforcement bars 12" min.
at all points
4. Min. clearance for rebar 1 1/2" unless
otherwise shown

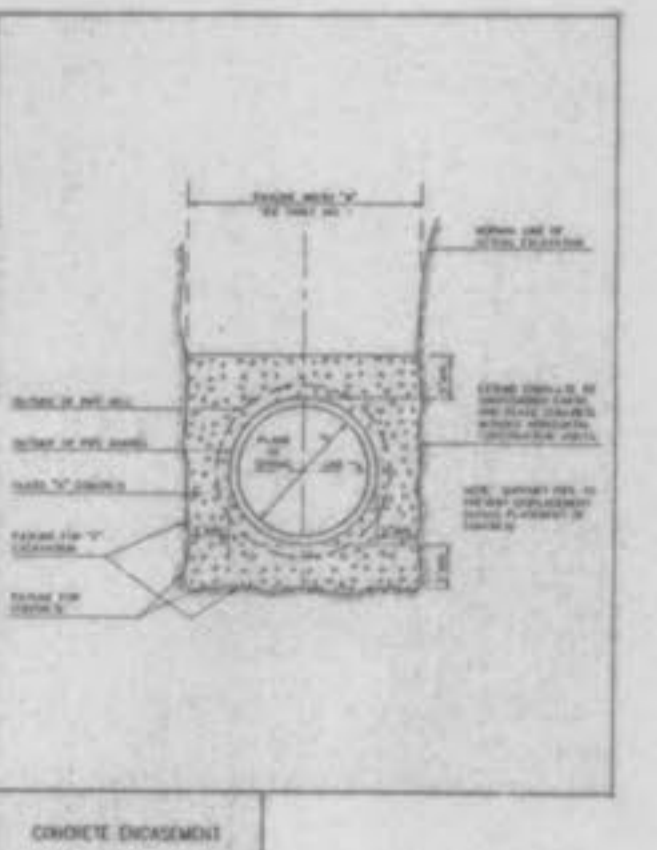


ASPHALTIC CONCRETE PAVEMENT
NO SCALE

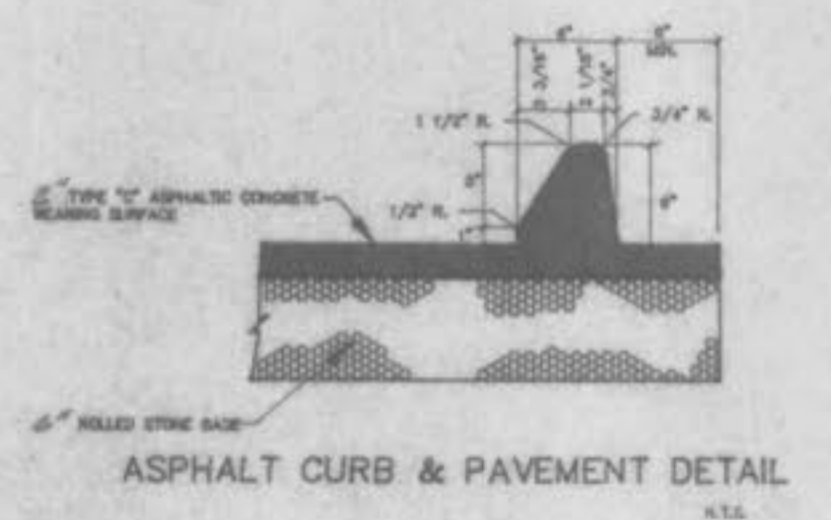


NOTES:
1. STRAW BALES, NOT HAY BALES
SHALL BE USED
2. BUTT ENDS OF BALES TIGHTLY TOGETHER.
3. INSTALL BALES WITH BINDING AROUND
SIDES, NOT TOP AND BOTTOM.
4. FILL ANY GAP BETWEEN BALES BY
WEDGING LOOSE STRAW BETWEEN THEM.

SEDIMENT BARRIER
NO SCALE



CONCRETE CURB DETAIL



ASPHALT CURB & PAVEMENT DETAIL
ATA

CONSTRUCTION DETAILS

BAT ENGINEERING
PLANNING
SURVEYING

221 Point West Boulevard
St. Charles, MO 63301
TEL 314-948-8888
FAX 314-948-9182

4/1/93
DATE
5/14/93
REVISIONS

85-1820D
PROJECT NUMBER
7/21/93

5 OF 5
SHEET