

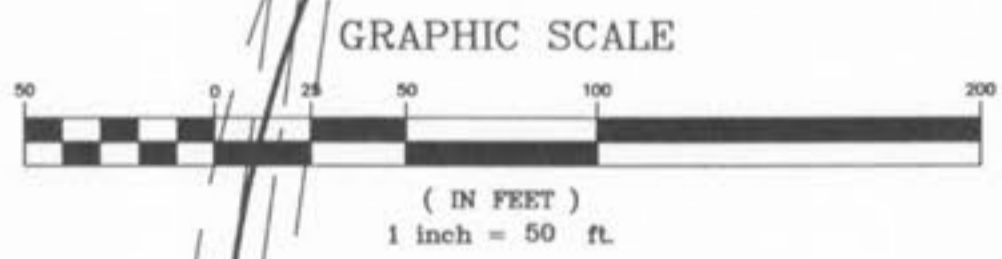
Call BEFORE you DIG
TOLL FREE
1-800-344-7483
MISSOURI ONE-CALL SYSTEM, INC.

THE UNDERGROUND UTILITIES SHOWN HEREON WERE PLOTTED FROM AVAILABLE INFORMATION AND DO NOT NECESSARILY REFLECT THE ACTUAL EXISTENCE, NONEXISTENCE, SIZE, TYPE, NUMBER OR LOCATION OF THESE OR OTHER UTILITIES. THE CONTRACTOR SHALL BE RESPONSIBLE FOR VERIFYING THE ACTUAL LOCATION OF ALL UNDERGROUND UTILITIES, SHOWN OR NOT SHOWN, AND SAID UTILITIES SHALL BE LOCATED IN THE FIELD PRIOR TO ANY GRADING, EXCAVATION OR CONSTRUCTION OF IMPROVEMENTS. THESE PROVISIONS SHALL IN NO WAY ABSOLVE ANY PARTY FROM COMPLYING WITH THE UNDERGROUND FACILITY SAFETY AND DAMAGE PREVENTION ACT, CHAPTER 319, RSMo

PROPERTY N/F
KAPLAN LUMBER COMPANY, INC &
LEONARD KAPLAN, TRUSTEE
(240B/1783)

6.50 AC. - ZONED R-1
FUTURE DEVELOPMENT

NOTE:
MULTI USE TRAIL TO BE LOCATED ON
EAST SIDE OF CREEK. EXACT LOCATION
AND DETAILS TO BE PROVIDED AT TIME
OF DEVELOPMENT OF THIS PARCEL.



SIGN LEGEND

- ① = R1-2 YIELD SIGN
 - ② = KEEP RIGHT
 - ③ = R1-2 TURN PROHIBITION (LEFT)
 - ④ = R1-1 STOP
- W12-1 AND R1-2 SIGNS SHALL BE MOUNTED ON BREAKAWAY ASSEMBLY PIPE POST (SEE MODOT STANDARD PLAN 903.03)

BEFORE START OF EXISTING CONCRETE CURB AND PAVEMENT

STATION: 121+72.19 OFFSET: 31.75 LEFT
START PAVEMENT ROUNDING

STA. 122+40.09 @ MISSOURI HIGHWAY "K"
STA. 0406.00 @ R.O.W. FALLON LOOP ROAD

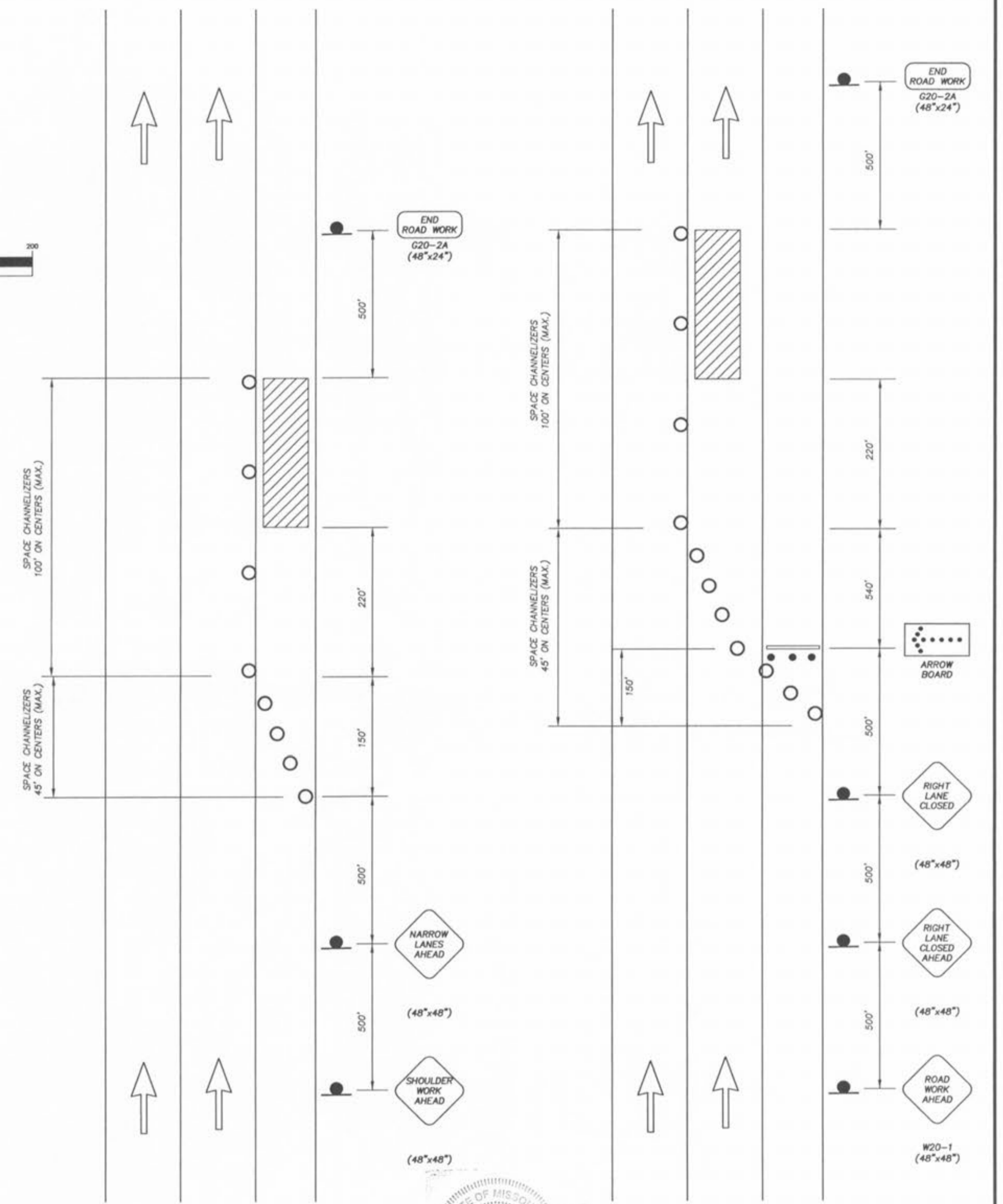
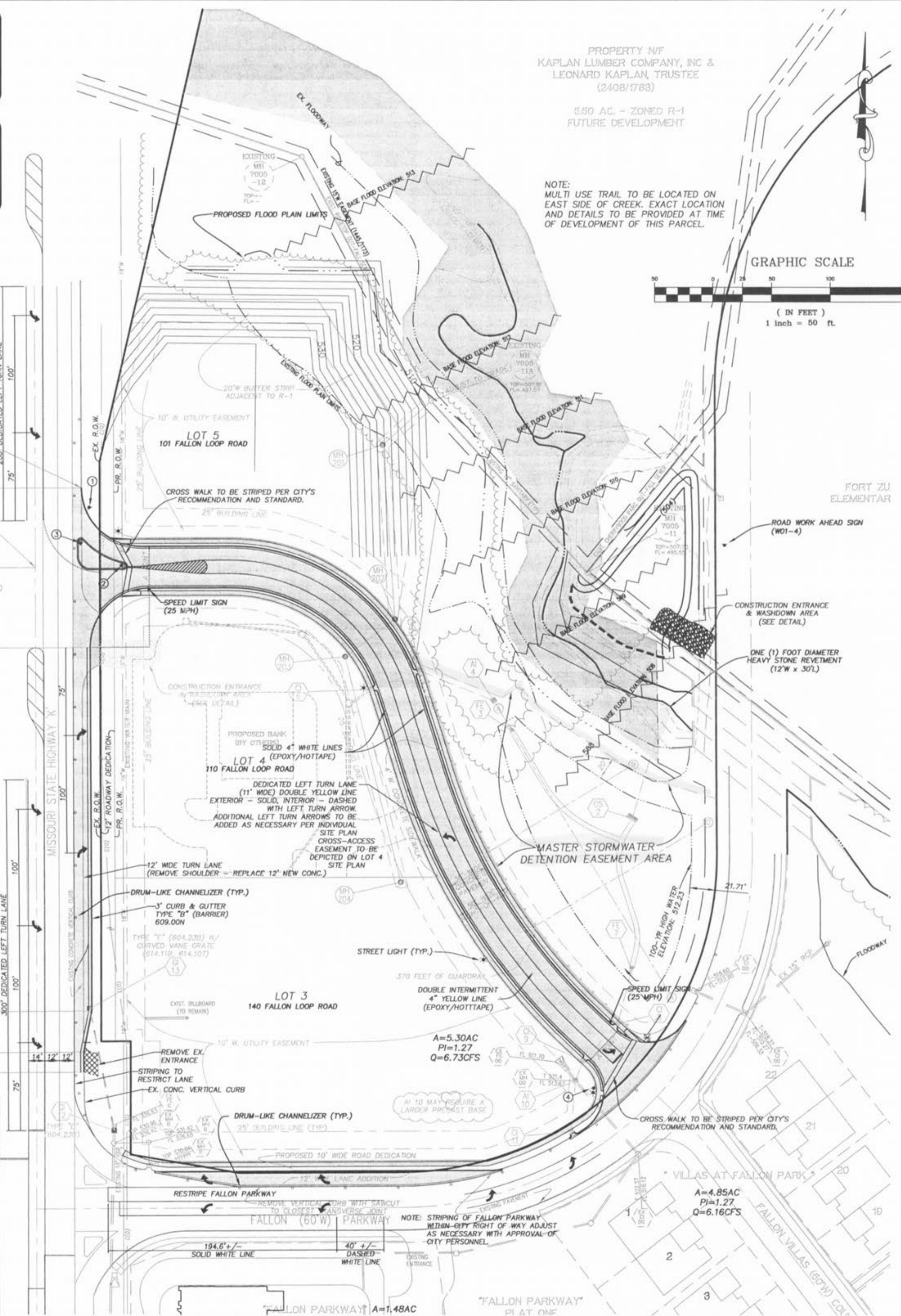
STA. 122+40.09
PROPOSED NEW ACCESS POINT FOR PROPOSED ROAD
3/4 ACCESS ONLY (RIGHT-IN, LEFT-IN, & RIGHT-OUT)

STATION: 123+08.19 OFFSET: 46.86 LEFT
END PAVEMENT ROUNDING
START PAVEMENT WIDENING

STATION: 126+19.21 OFFSET: 47.25 LEFT
END PAVEMENT WIDENING
START 5:1 TAPER

STATION: 126+54.33 OFFSET: 40.39 LEFT
END 5:1 TAPER

STATION: 126+71.34 +/- OFFSET: 40.48 LEFT
TE-IN TO EXISTING CURB



SHOULDER WORK WITH MINIMAL ENCROACHMENT

SHOULDER WORK WITH LANE CLOSURE

TRAFFIC CONTROL NOTES:

1. Traffic control shall be maintained in accordance with the Manual On Uniform Traffic Control Devices (MUTCD), the Missouri Department of Transportation Standard Plan 616.10 for Traffic Control Devices and The Missouri Department of Transportation Project Development Manual Section 8.
2. Temporary pavement marking, if necessary, shall be considered as incidental to the construction of the project and no direct payment will be made for this item. Pavement markings shall be maintained in accordance with Part VI of the MUTCD. Interim pavement markings may be left in place for situations of two weeks or less.
3. Channelizers shall be placed as shown on the plans. A minimum 10 foot wide driving lane shall be maintained. Channelizers shall be placed in open trench during non-working hours.
4. If an open trench condition will remain open overnight, "Pavement Edge Treatment" shall be provided in accordance with MoDOT Standard Drawing 619.10.
5. Any existing signs which conflict with the traffic control plan shall be covered.
6. All spacing and distances are approximate and may be adjusted by the engineer to fit field conditions.
7. Use a flagger when moving equipment on and off the roadway, otherwise optional.
8. All vehicles, equipment, workers and their activities shall be restricted to one side of the pavement.
9. Lane closures are prohibited during daylight hours.

Professional Engineer Seal
5-5-06