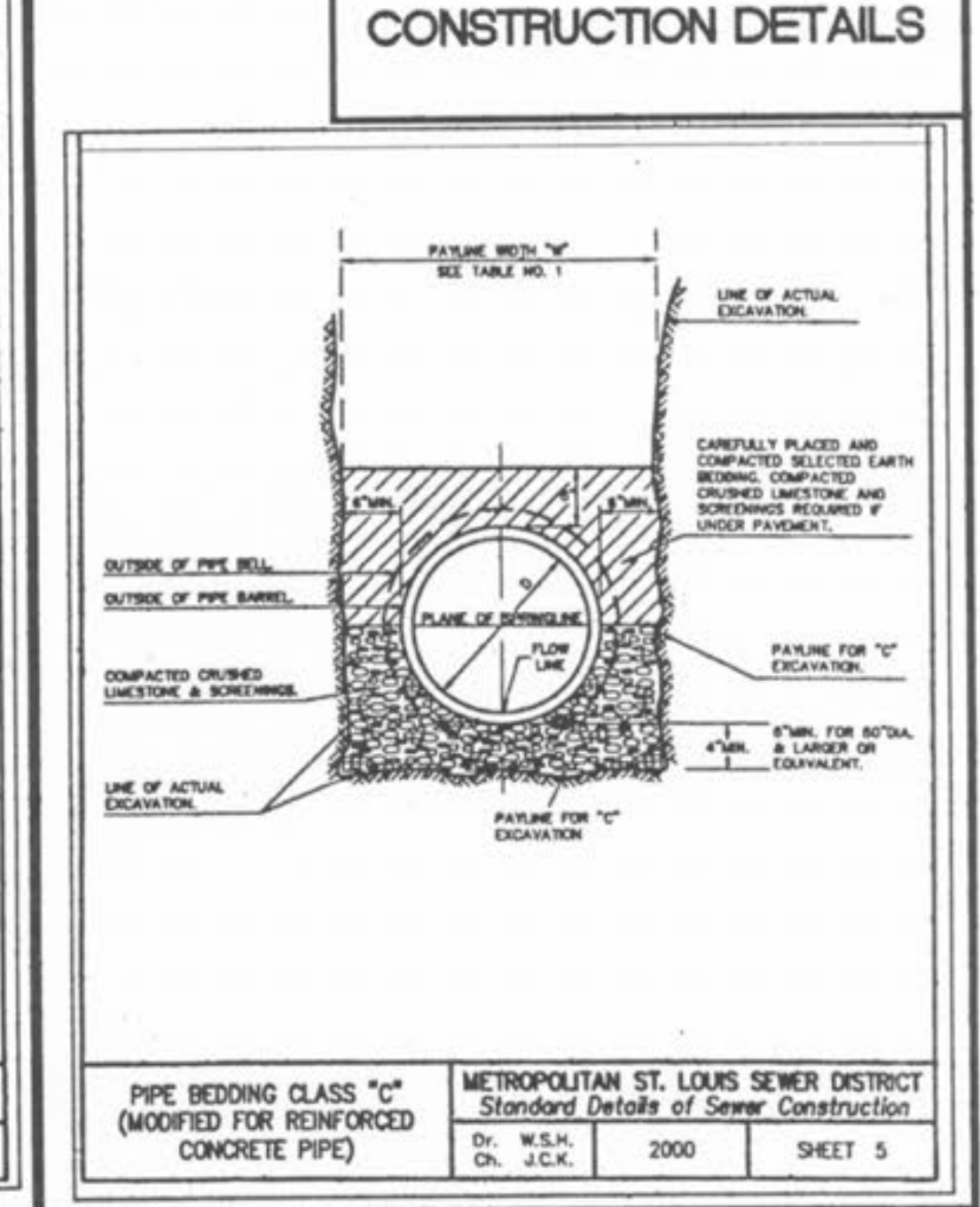
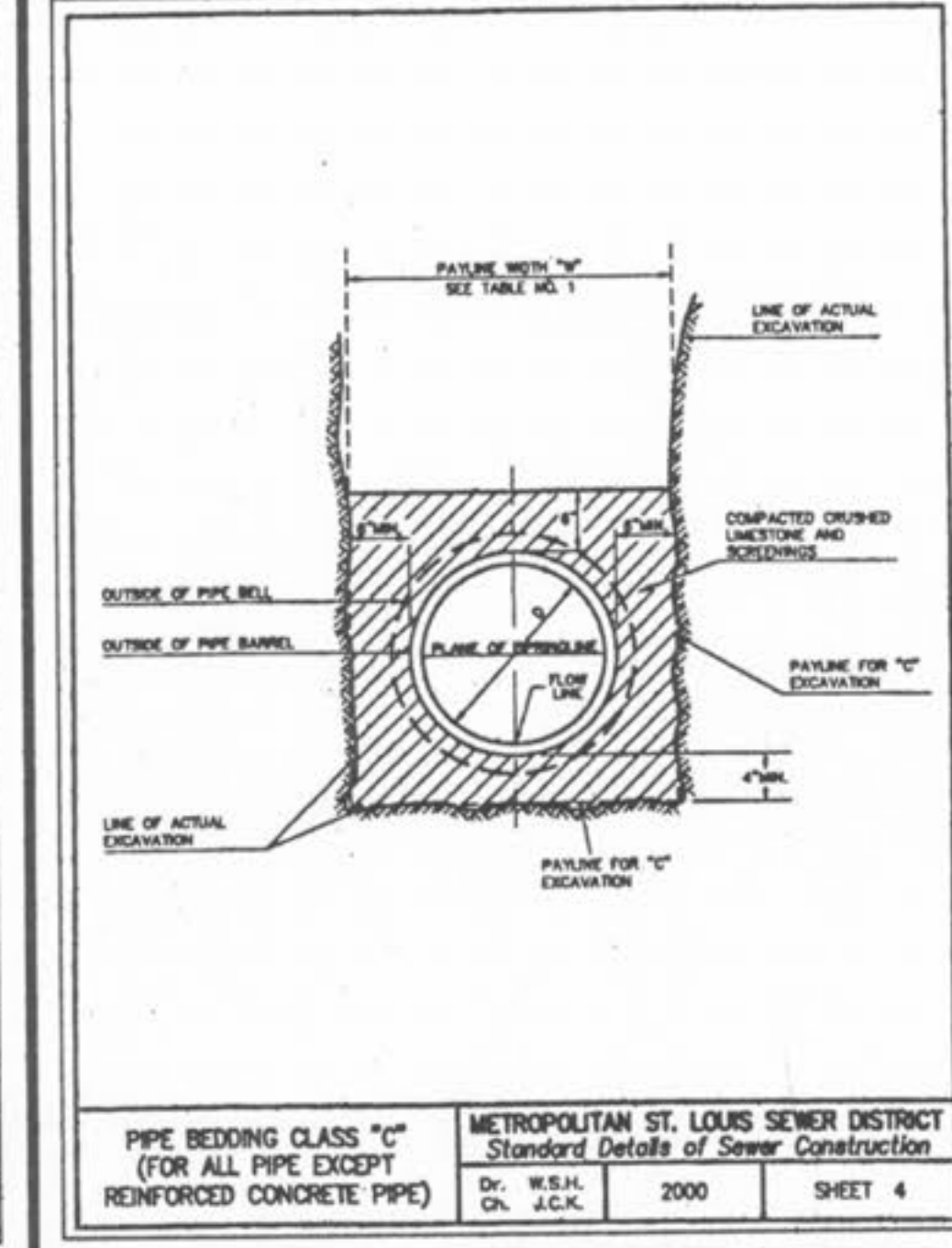
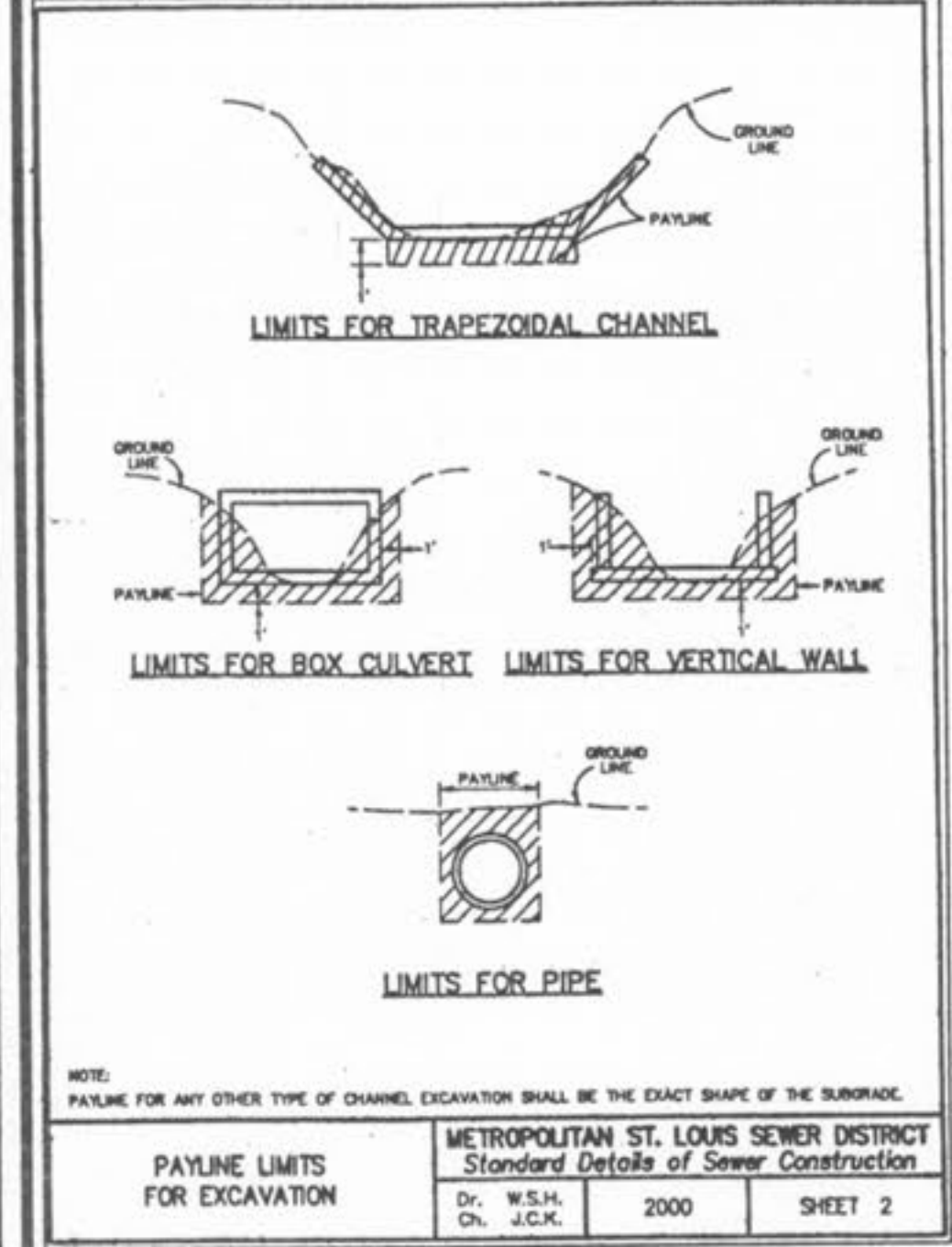


ROUND PIPE				HORIZONTAL ELLIPTICAL PIPE			
INCH DIAMETER OF PIPE (INCHES)	"W" PAYLINE WIDTH OF TRENCH (INCHES)	"W" PAYLINE WIDTH OF TRENCH (FEET)	PAY-VOLUMES CU. FT. PER FT. (CUBIC FEET)	INCH DIAMETER OF PIPE (INCHES)	"W" PAYLINE WIDTH OF TRENCH (FEET)	PAY-VOLUMES CU. FT. PER FT. (CUBIC FEET)	PAY-VOLUMES CU. FT. PER FT. (CUBIC FEET)
4	30	2.80	3.28				
6	30	2.80	3.58				
8	30	2.80	3.87				
10	30	2.80	4.08				
12	30	2.80	4.25				
15	36	3.00	5.55				
18	36	3.00	5.77	14 x 23	41	3.42	5.84
21	36	3.00	5.81				
24	42	3.50	7.28	18 x 30	48	4.08	7.58
27	45	3.75	8.18	22 x 34	53	4.42	8.41
30	48	4.08	9.30	24 x 38	58	4.83	9.70
33	48	4.42	10.53	27 x 43	62	5.17	10.71
36	54	4.87	11.43	28 x 45	66	5.50	11.72
39	54	5.21	12.38	32 x 48	71	5.82	12.74
42	63	5.25	13.38	34 x 53	75	6.25	14.05
48	70	5.83	15.87	38 x 60	83	6.82	16.18
54	77	6.42	18.15	43 x 68	92	7.47	18.31
60	84	7.00	20.73	48 x 78	101	8.42	21.58
66	91	7.58	23.45	53 x 83	108	8.98	24.33
72	96	8.17	26.37	58 x 91	118	9.83	27.45
78	100	8.75	29.38	63 x 98	128	10.50	30.50
84	112	9.33	32.57	68 x 108	135	11.25	33.91
90	118	9.82	35.80	72 x 113	143	11.82	36.98
96	126	10.50	39.27	77 x 121	152	12.67	40.89
102	133	11.08	42.88	82 x 128	160	13.33	44.45
108	140	11.67	46.75	87 x 136	168	14.00	47.79
114	147	12.25	50.88	92 x 143	176	14.67	51.70
120	154	12.83	54.72	97 x 151	185	15.42	56.01
126	161	13.42	58.92				
132	168	14.00	63.37	108 x 168	202	16.83	64.48
144	182	15.17	72.40	118 x 180	218	18.17	73.58

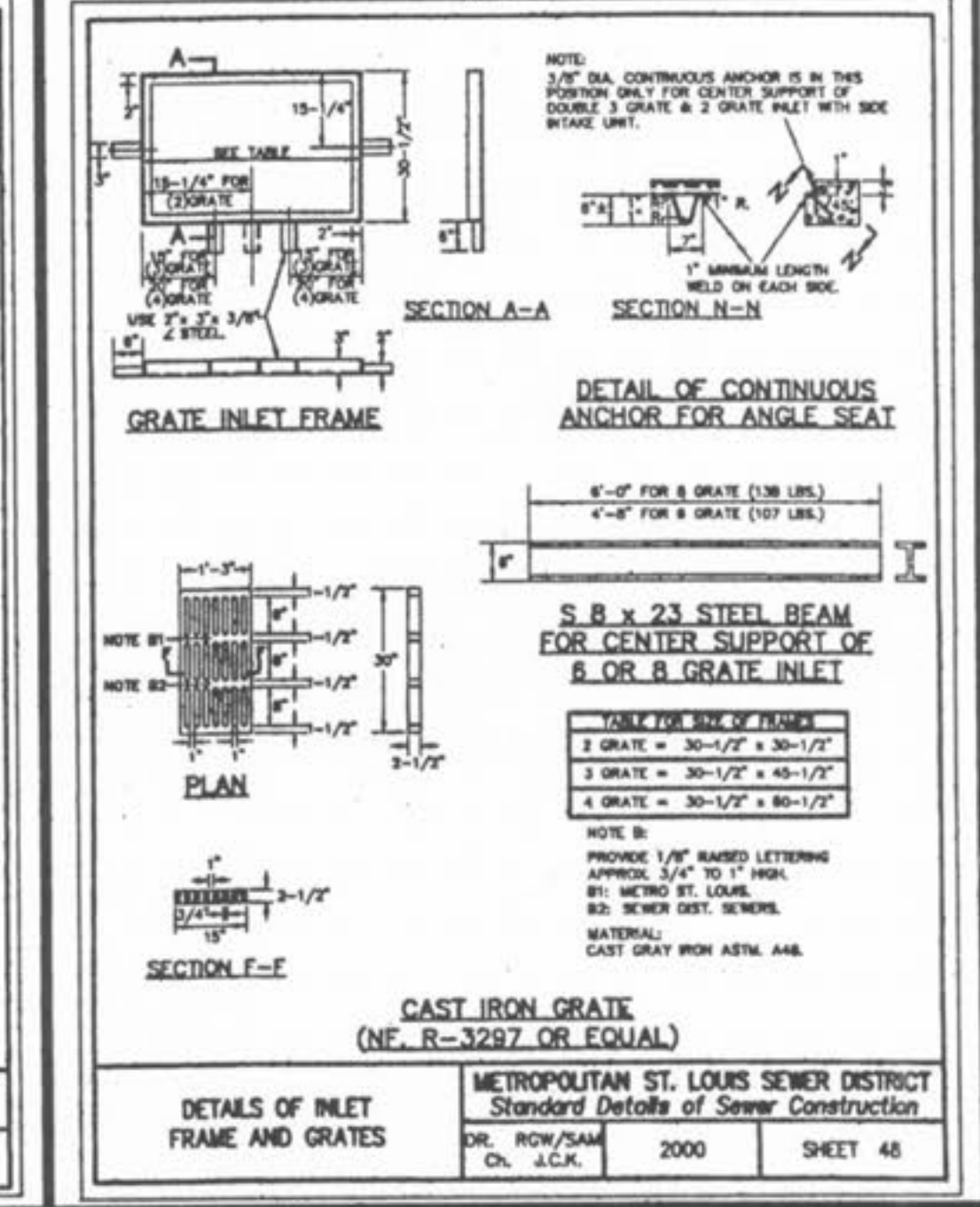
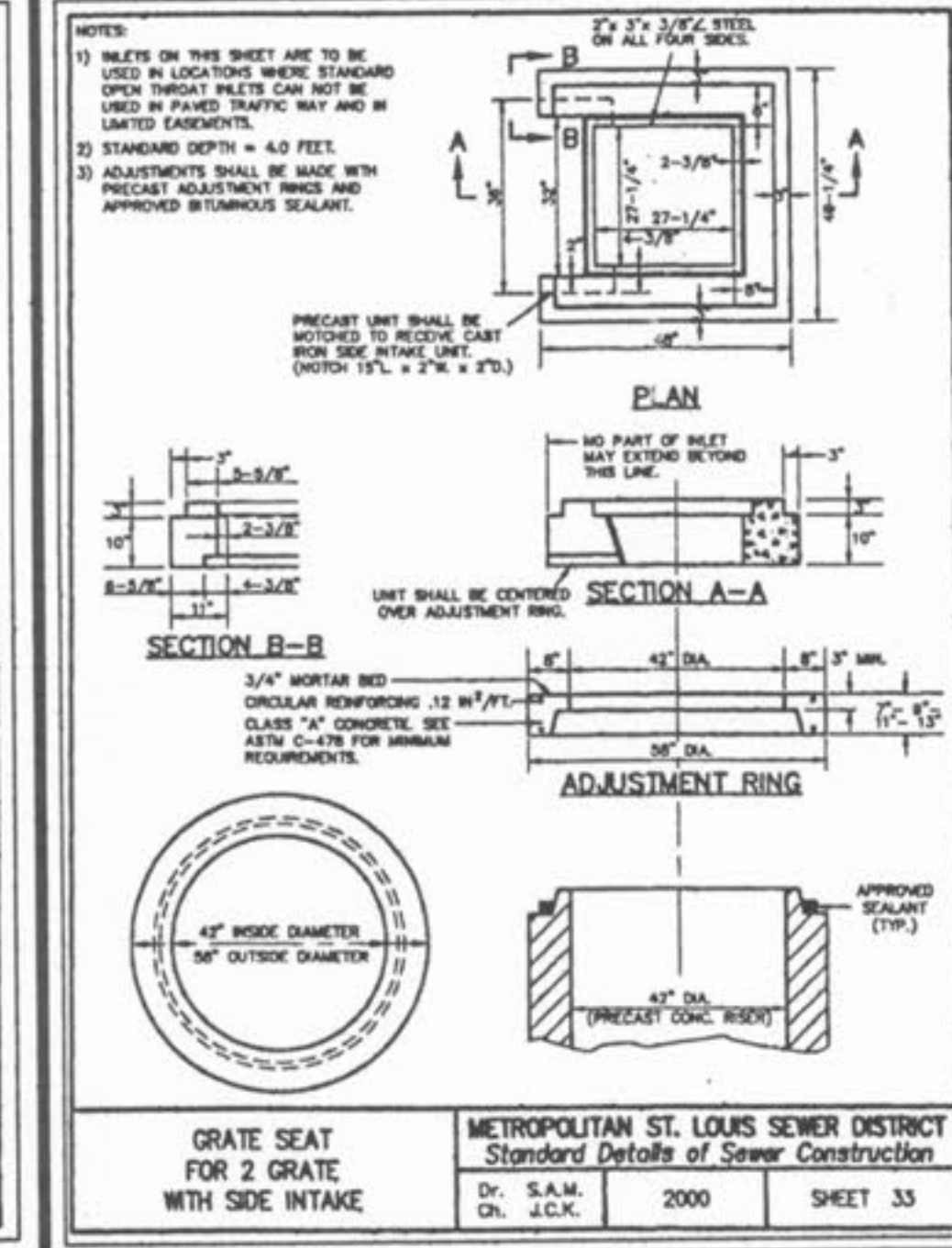
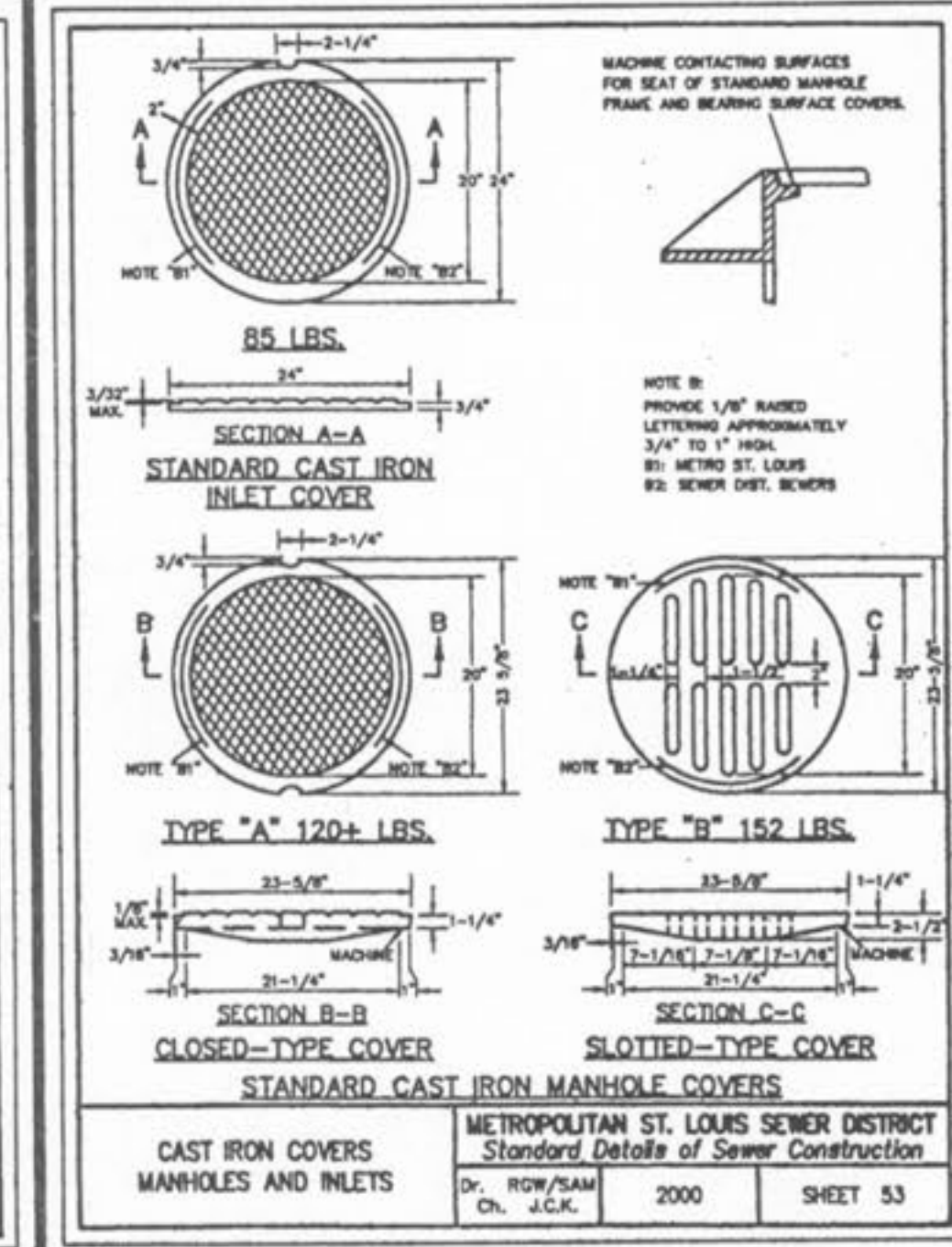
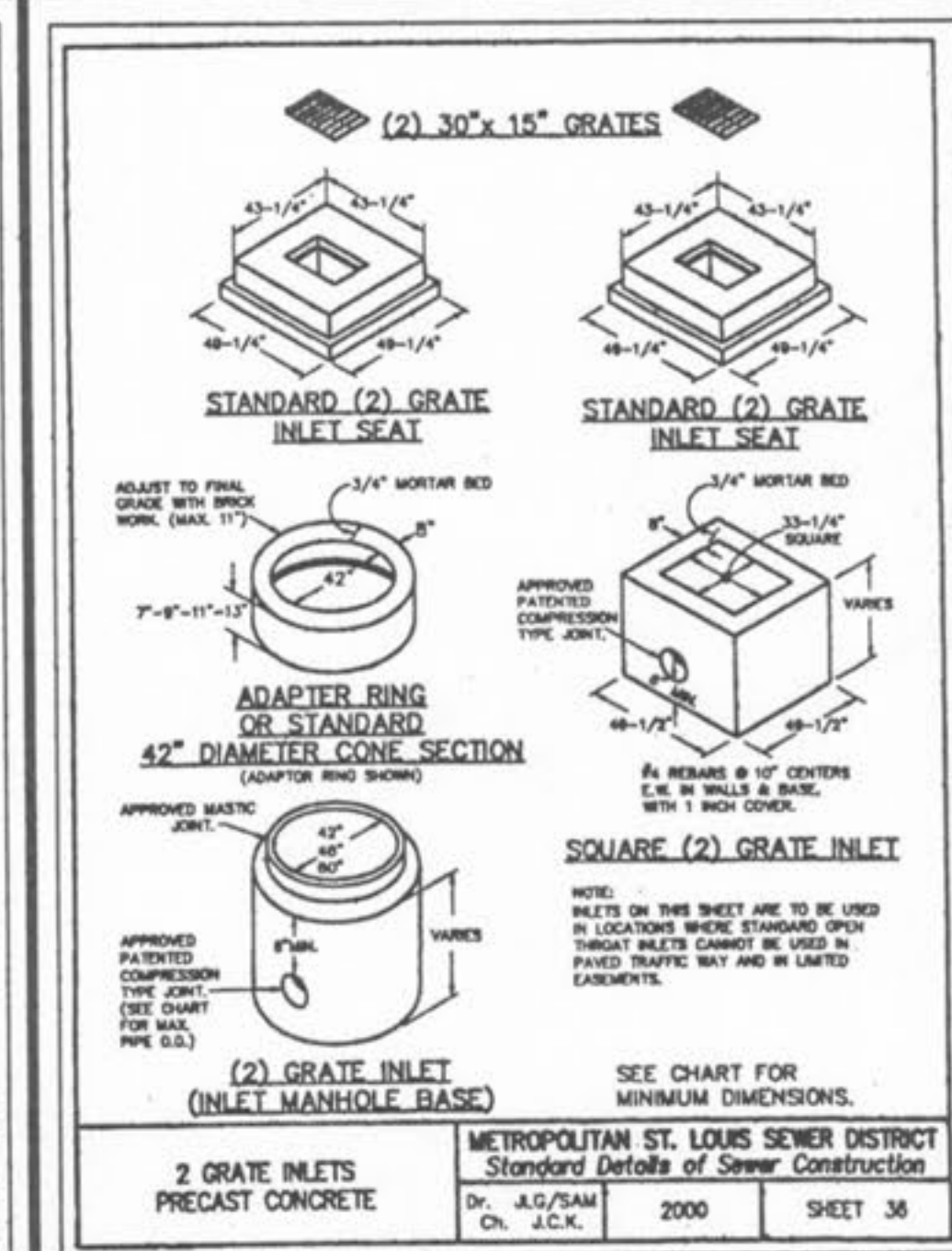
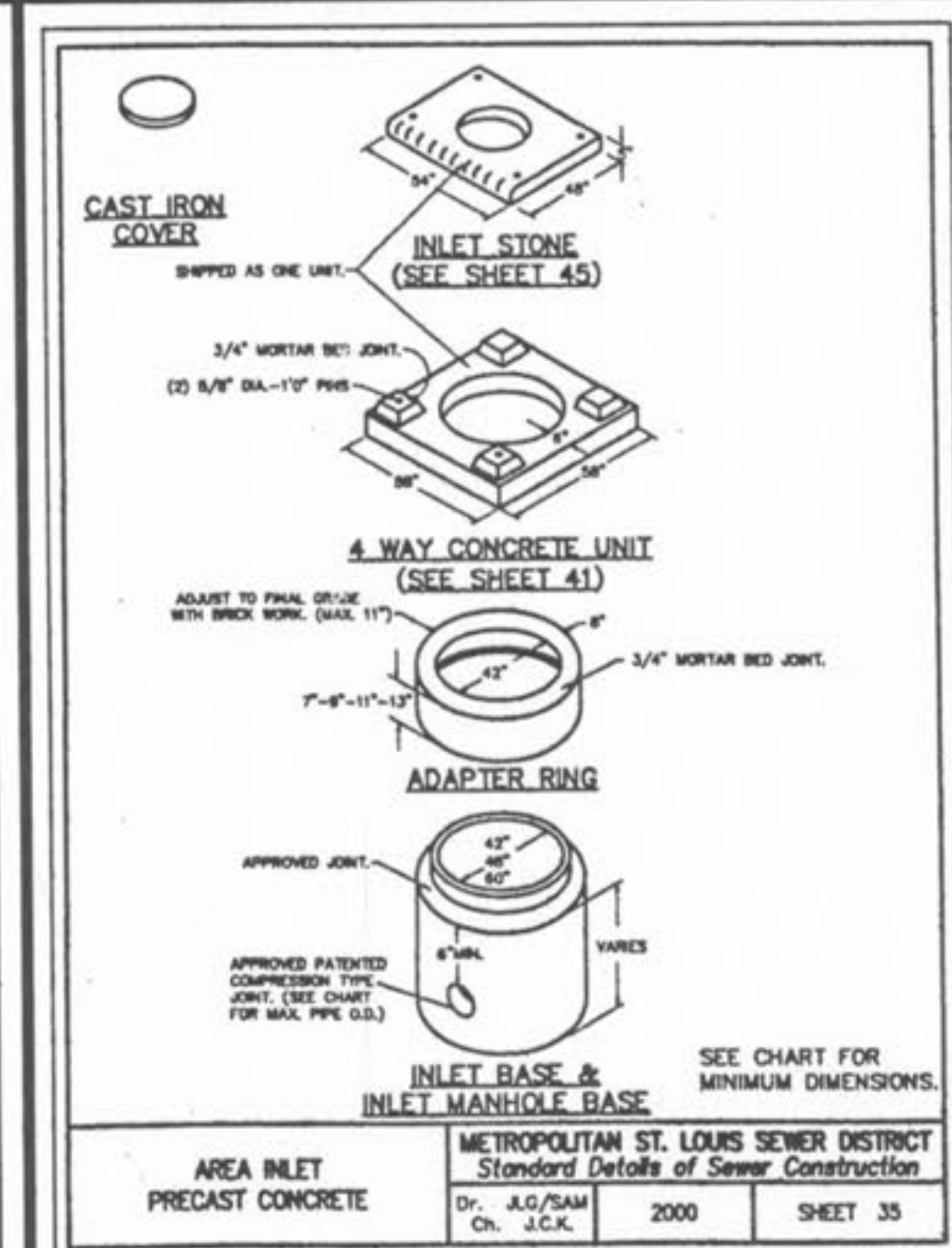
TABLE 1 PAYLINE WIDTHS OF TRENCH AND PAY-QUANTITIES OF CONCRETE
 METROPOLITAN ST. LOUIS SEWER DISTRICT
 Standard Details of Sewer Construction
 Dr. S.E.B.
 Ch. J.C.K. 2000 SHEET 1



PRECAST CONCRETE STORMWATER STRUCTURES
 MINIMUM DISTANCE FLOWLINE TO TOP OF STONE OR GRATE

PIPE I.D.	AREA INLET	4-WAY CONCRETE UNIT	ADAPTER RING	INLET BASE & INLET MANHOLE BASE
12"	12"	12"	12"	12"
15"	15"	15"	15"	15"
18"	18"	18"	18"	18"
21"	21"	21"	21"	21"
24"	24"	24"	24"	24"
27"	27"	27"	27"	27"
30"	30"	30"	30"	30"
33"	33"	33"	33"	33"
36"	36"	36"	36"	36"
39"	39"	39"	39"	39"
42"	42"	42"	42"	42"

PRECAST CONCRETE STORMWATER STRUCTURES
 METROPOLITAN ST. LOUIS SEWER DISTRICT
 Standard Details of Sewer Construction
 Dr. J.L.G.
 Ch. J.C.K. 2000 SHEET 34



STEEL REQUIREMENTS FOR GRATE INLET SEAT
 METROPOLITAN ST. LOUIS SEWER DISTRICT
 Standard Details of Sewer Construction
 Dr. WSH/SAM
 Ch. J.C.K. 2000 SHEET 50

CALL	USE	Ø	STRAIGHT BARS
G-1	2, 3, OR 4 GRATE	3'-4"	
G-2	6 & 8 GRATE	5'-10"	
H-2	2 GRATE	3'-6"	
H-3	3 & 6 GRATE	4'-9"	
H-4	4 & 8 GRATE	6'-0"	

