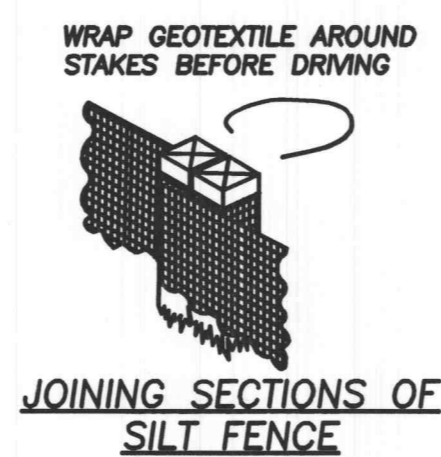
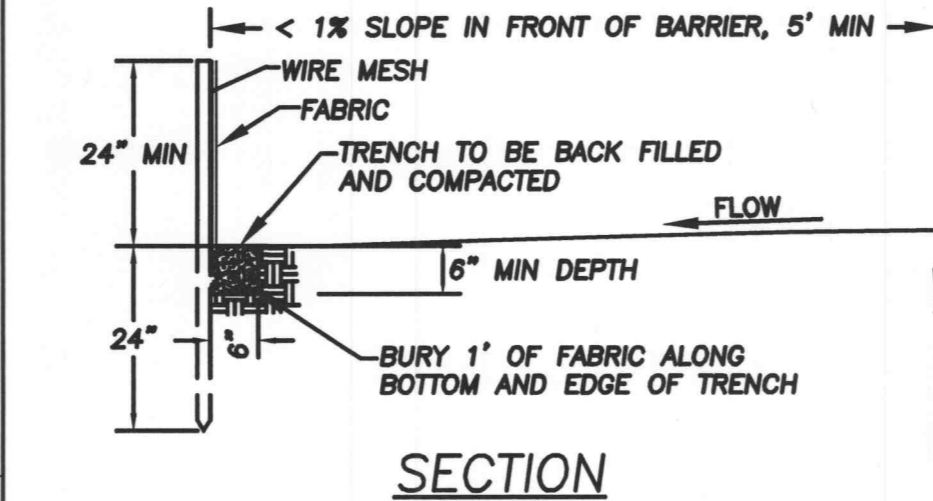
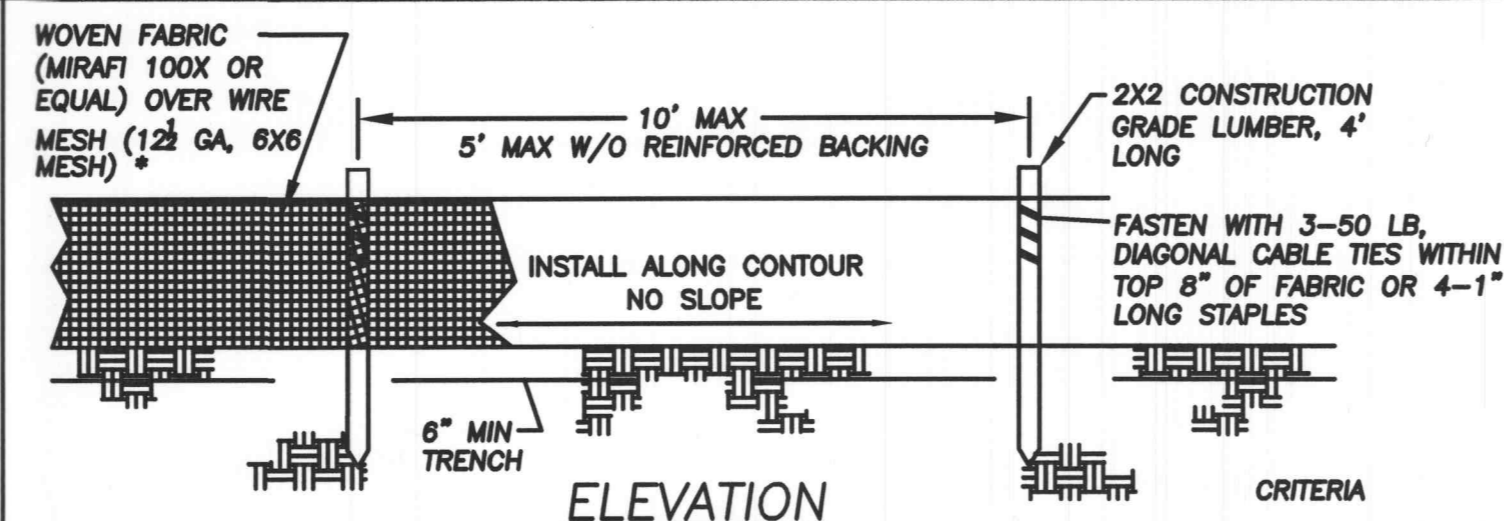


- DESIGN CRITERIA**
- SILT FENCE FOR SHEET FLOW SHALL HAVE A MAXIMUM DRAINAGE AREA OF 1/4 ACRE PER 100 LF.
 - STRAW BALE BARRIERS FOR SHEET FLOW SHALL HAVE A MAXIMUM DRAINAGE AREA OF 1/4 ACRE PER 100 LF.
 - REFER TO INDIVIDUAL ESC FIGURE FOR INSTALLATION.
 - TERRACING INCLUDES LOGS, WATTLES & FILTER SOCKS.

CITY OF OFFALLON
ENGINEERING DEPARTMENT
OFFALLON, MISSOURI

**SPACING CHART
FOR EBC DEVICES**



- CRITERIA**
- SILT FENCE SHALL BE 24 INCHES HIGH.
 - SILT FENCE SHALL NOT BE USED FOR CONCENTRATED FLOWS.
 - GEOSYNTHETIC REINFORCED SILT FENCE BACKING MAY BE USED IN LIEU OF WIRE MESH.
 - WIRE MESH WILL BE USED AT LOCATIONS SHOWN ON THE APPROVED SWPPP.

NOTE: IF FABRIC IS INSTALLED BY EQUIPMENT DESIGNED TO SLICE INTO THE GROUND, THE TRENCH IS NOT REQ'D.

CITY OF OFFALLON
ENGINEERING DEPARTMENT
OFFALLON, MISSOURI

**SILT FENCE INSTALLATION
SHEET FLOW (ONLY)**

City of O'Fallon Standard Commercial Notes and Details - June 2010

Table 60-6 Soil Amendment Rates

Soil Amendment Material	Application Rate (Lb per Acre)
Fertilizer	Nitrogen (N) 30 ¹
	Phosphate (P ₂ O ₅) 90 ¹
	Potash (K ₂ O) 90 ¹
Lime	1,000 ²

¹Increase the rate by 25% for slopes steeper than 5:1.
²Rate is in effective neutralizing material (ENM) units.

Table 60-5 Soil Stabilization Schedule

Soil Disturbance Activity or Condition	Required Stabilization Time
Soil disturbance has ceased in areas greater than 2,000 square feet.	14 days
After construction of dikes, swales, diversions, and other concentrated flow areas	5 days
When slopes are steeper than 3 horizontal to 1 vertical	7 days
When slopes are greater than 3% and longer than 150 feet.	14 days
Perimeter controls around soil stockpiles.	End of workday
Stabilization or covering of inactive stockpiles.	30 days
When land disturbance is completed, permanent soil stabilization must be installed.	30 days

PERMANENT SEEDING SPECIFICATIONS SHALL CONFORM TO NRCS CONSERVATION PRACTICE STANDARD & SPECIFICATIONS FOR SEEDING.

CODE 340 "COVER CROP"
CODE 342 "CRITICAL AREA PLANTING"
CODE 484 "MULCHING"
CODE 590 "NUTRIENT MANAGEMENT"
CODE 723 "VEGETATION ESTABLISHMENT, HERBACIOUS SEEDING"

Table 60-9 Mulching Materials

Material	Rate	Requirements	Installation/Uses
Straw	1.5-2.5 tons/ac (3-4 tons, if roller punched)	Dry, unchopped, unweathered; free of weed seeds & rot.	Spread by machine 1.5-2.5 inches deep; must be tacked or tied down.
Compost Blanket	1" thick	Double the application rate for embankments	Follow manufacturer's application method.
Wood fiber, wood cellulose, paper	1-2 tons/ac	Double the application rate in critical areas	Use with power mulcher or hydroseeder; may be used to tack straw on steep slopes. Cannot be used in hot dry weather.

Table 60-7 Temporary Fall Seeding

Plant Species	Rate ¹ (lb/acre)	Seeding Times
Side-Oats	65	8/16 - 9/30
Winter Rye	50	8/01 - 10/15
Winter Wheat	60	8/01 - 10/15
Orchard Grass	120	8/01 - 10/15
Perennial Ryegrass	80	8/01 - 10/15
Tall fescue, Smooth Brome	80	8/01 - 10/15
K-31 Fescue	120	9/01 - 11/15
Ladino Clover	2 ²	8/15 - 9/15
Crimson Clover	6 ²	8/15 - 9/15
Orchard Grass and Oats or Rye	15 ⁴ 40 ²	8/15 - 9/15

¹If using aerial seeding or other broadcast method to apply seed without rolling or cultipacking, increase seeding rates by 50 percent.

²Pure live seed (PLS)

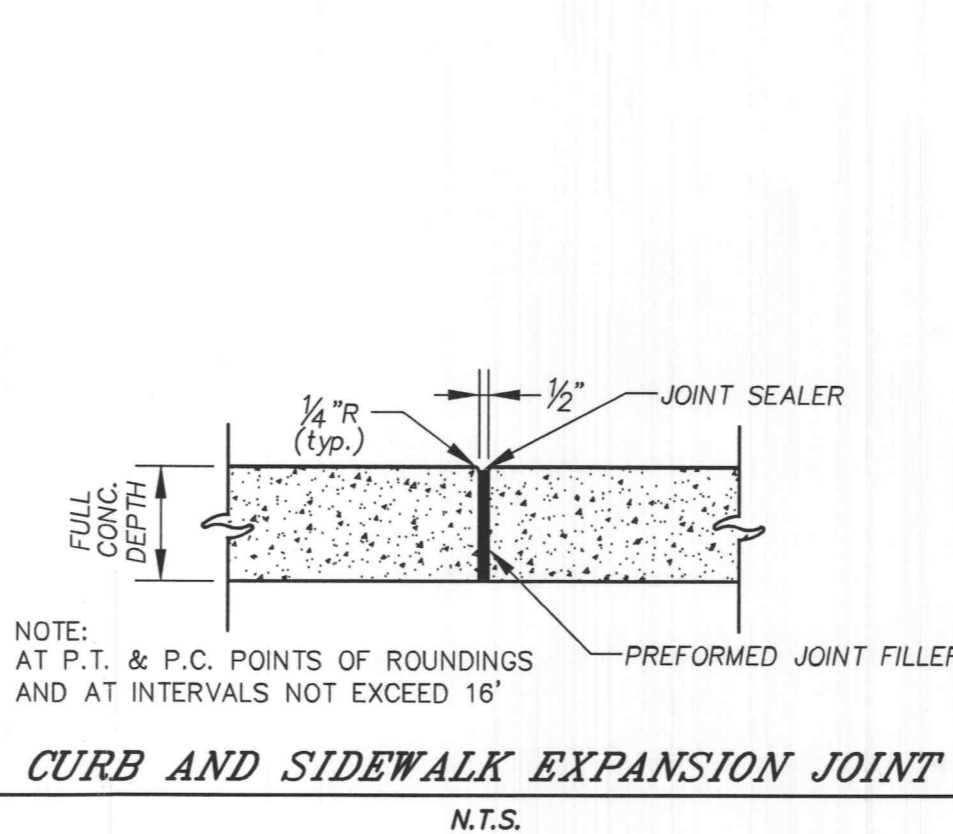
Table 60-8 Temporary Spring Seeding

Plant Species	Rate ¹ (lb/acre)	Seeding Dates
Winter Rye	50	3/15 - 5/31
Spring Oats	65	3/15 - 5/31
Annual Ryegrass	4 ²	3/15 - 6/15
Sudangrass	16 ²	4/15 - 6/15
K-31 Fescue	30 ²	3/15 - 5/31
Red Clover & Oats	2 ² 30 ²	3/15 - 5/31

¹If using aerial seeding or other broadcast method to apply seed without rolling or cultipacking, increase seeding rates by 50 percent.

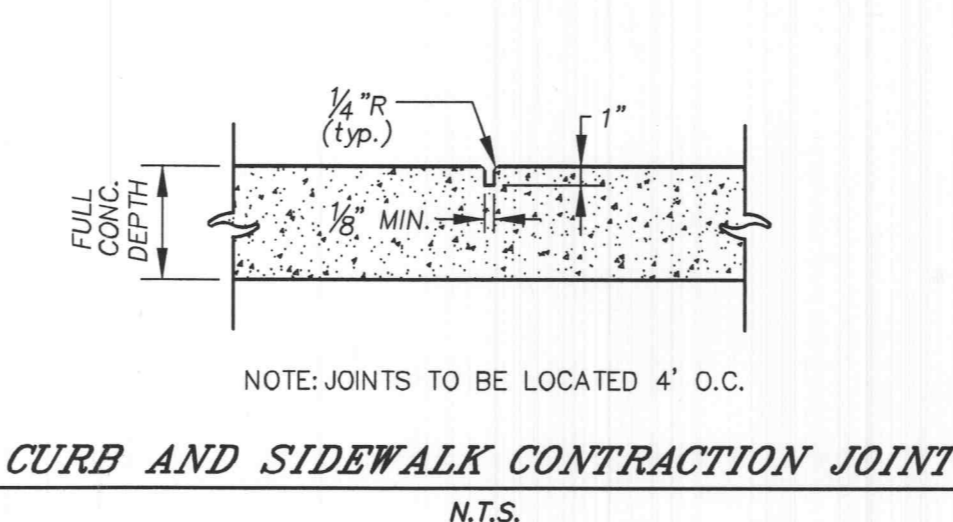
²Pure live seed (PLS)

PROJECT SPECIFIC DETAILS



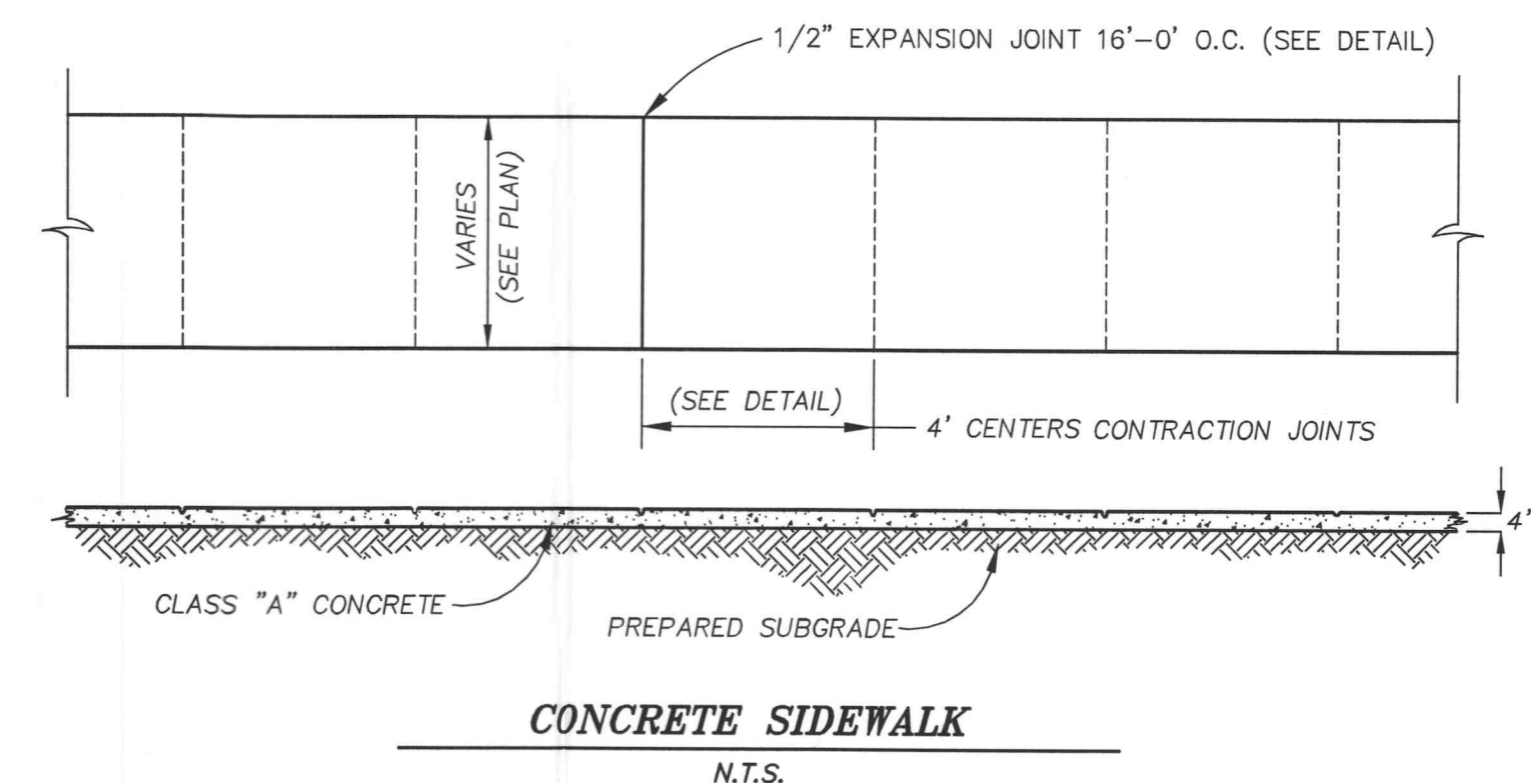
NOTE: AT P.T. & P.C. POINTS OF ROUNDINGS AND AT INTERVALS NOT EXCEED 16'

CURB AND SIDEWALK EXPANSION JOINT
N.T.S.

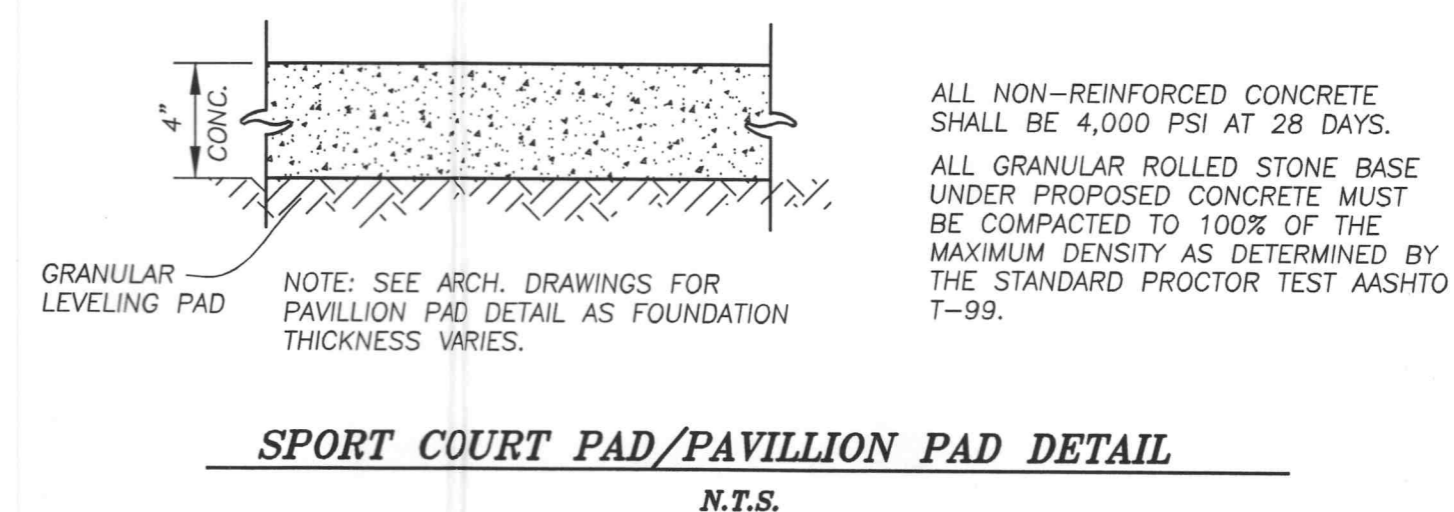


NOTE: JOINTS TO BE LOCATED 4' O.C.

CURB AND SIDEWALK CONTRACTION JOINT
N.T.S.



CONCRETE SIDEWALK
N.T.S.



ALL NON-REINFORCED CONCRETE SHALL BE 4,000 PSI AT 28 DAYS.
ALL GRANULAR ROLLED STONE BASE UNDER PROPOSED CONCRETE MUST BE COMPACTED TO 100% OF THE MAXIMUM DENSITY AS DETERMINED BY THE STANDARD PROCTOR TEST AASHTO T-99.

SPORT COURT PAD/PAVILLION PAD DETAIL
N.T.S.

Developer / Owner Information

CONTACT: MR. MARTY WEXLER
ADDRESS: 1040 ST. PETERS HOWELL ROAD
ST. PETERS, MO 63376
PHONE: (636) 970-2800

FAMILY SUPPORT SERVICES

CITY OF OFFALLON AND SITE SPECIFIC
DETAIL SHEET

P+Z No. 4604.04
Approval Date 04-04-2013

City No.

Page No.

SHEET 4 OF 4

PICKETT, RAY & SILVER, INC.

CIVIL ENGINEERING, LAND SURVEYING,
AND NATURAL RESOURCES SERVICES
St. Peters
22 Richmond Center Ct.
St. Peters, MO 63376
Phone (636) 397-1211 Fax (636) 397-1104
www.prs3.com 1-800-708-3916

ENGINEERS' AUTHENTICATION
THE RESPONSIBILITY FOR PROFESSIONAL ENGINEERING LIABILITY ON THIS PROJECT IS HEREBY LIMITED TO THE SET OF PLANS AUTHENTICATED BY THE SEAL, SIGNATURE, & DATE HEREUNDER ATTACHED. RESPONSIBILITY IS DISCLAIMED FOR ALL OTHER ENGINEERING PLANS INVOLVED IN THIS PROJECT AND SPECIFICALLY EXCLUDES REVISIONS AFTER THIS DATE UNLESS RE-AUTHENTICATED.
PICKETT, RAY & SILVER, INC.
MO LICENSE #000326



CHRISTINE A. LYON
PROFESSIONAL ENGINEER LICENSE #2000150037

FAMILY SUPPORT SERVICES
NEW PAVILLION
107 SHERIFF DIERKER COURT
OFFALLON, MISSOURI 63376
PRS PROJECT # 01212.MIHU.00R
DRAWN: C.L. 04/16/13
CHECKED: D.T. 04/17/13