

PROPERTY N/F  
BANK OF OLD MONROE  
BK 2413 PG 1400  
ZONED: C-2

PROPERTY N/F  
THE NOTHAM GROUP, INC.  
BK 1030 PG 1108  
ZONED: C-2

PROPERTY N/F  
BRIGHT STAR L.P.  
BK 2364 PG 718  
ZONED: C-2

PROPERTY N/F  
THE NOTHAM GROUP, INC.  
BK 1030 PG 1108  
ZONED: C-2

T.R. HUGHES BLVD

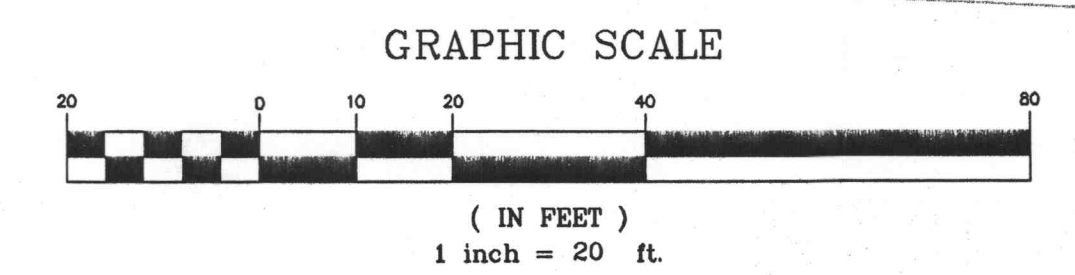
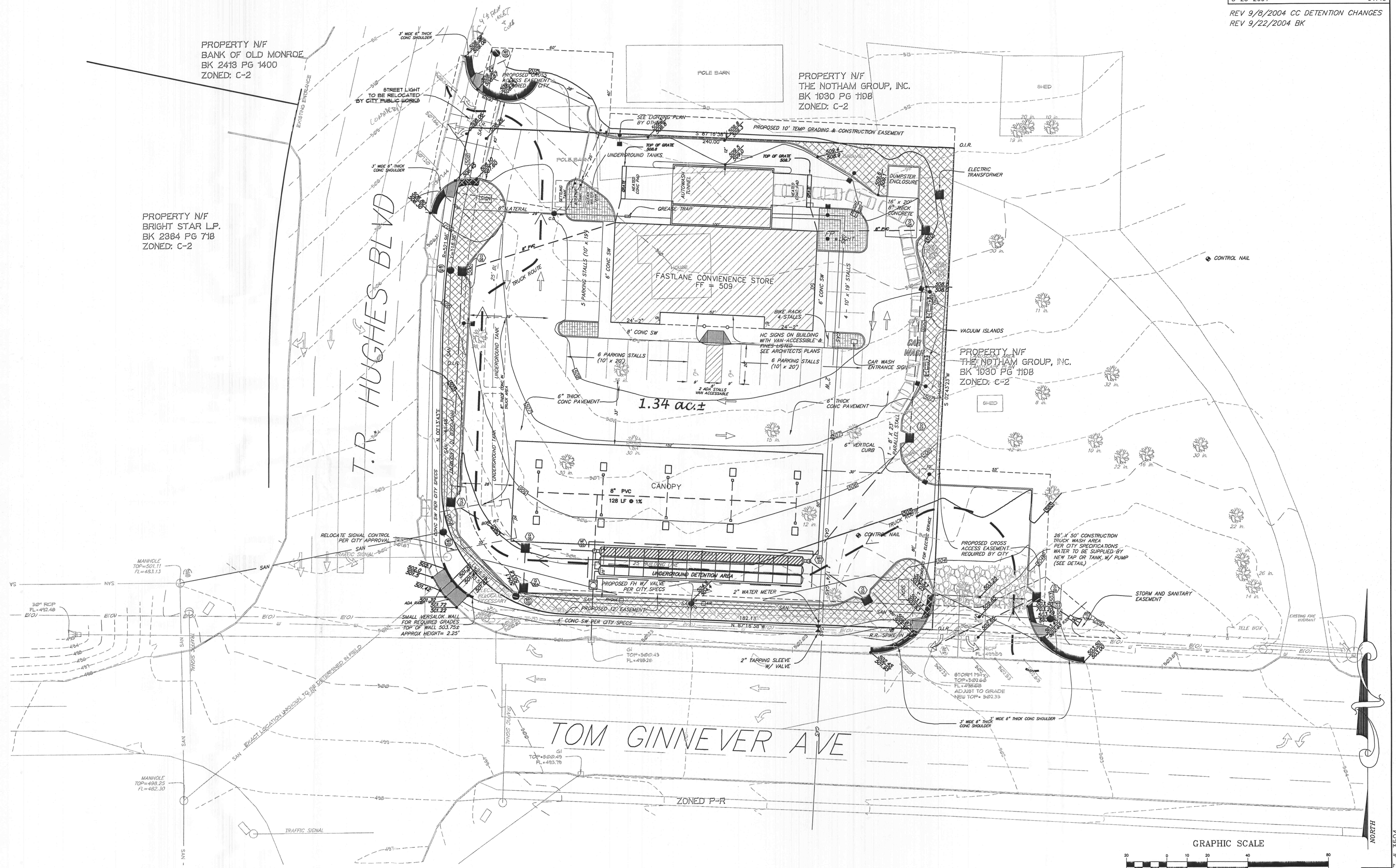
TOM GINNEVER AVE

1.34 ac ±

FASTLANE CONVENIENCE STORE  
FF = 509

CANOPY  
128 LF @ 1%

UNDERGROUND DETENTION AREA



F:\2004\04145 - Fastlane O'Fallon\SITE PLAN rev 9-22-04.dwg 9/22/2004 11:46:37 AM CST