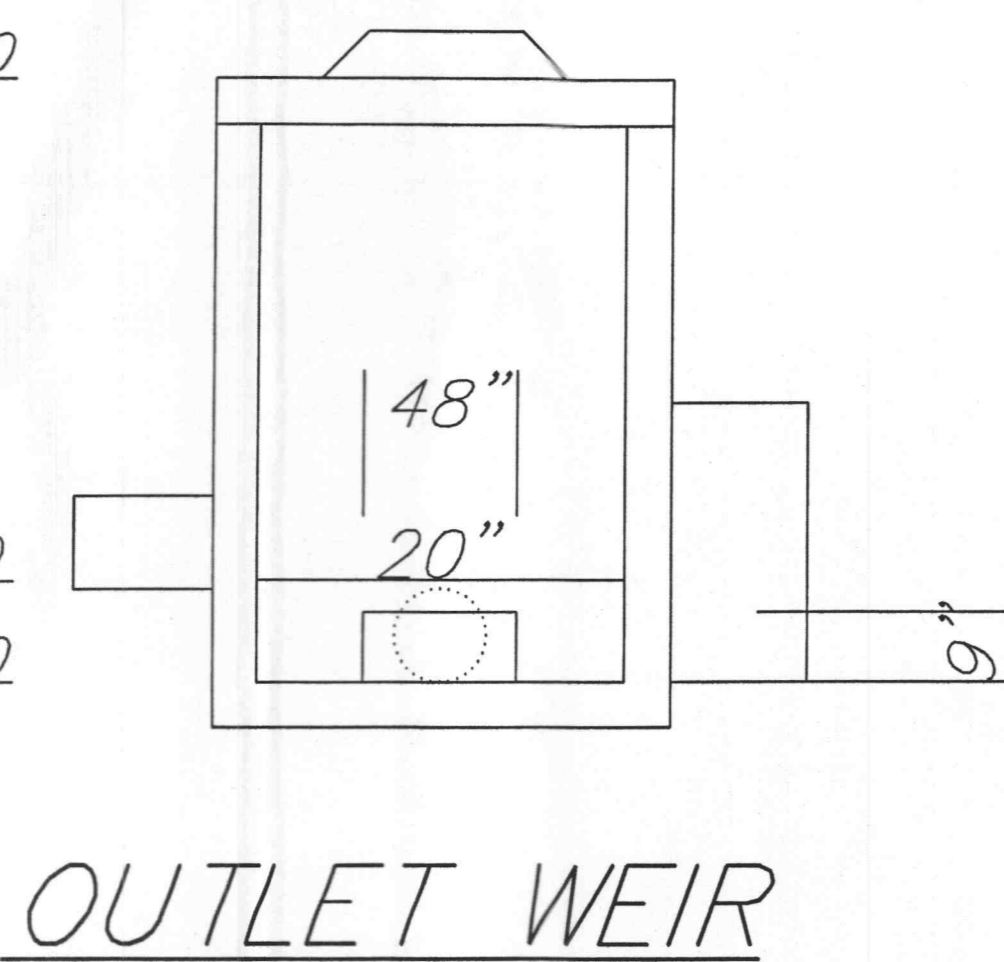
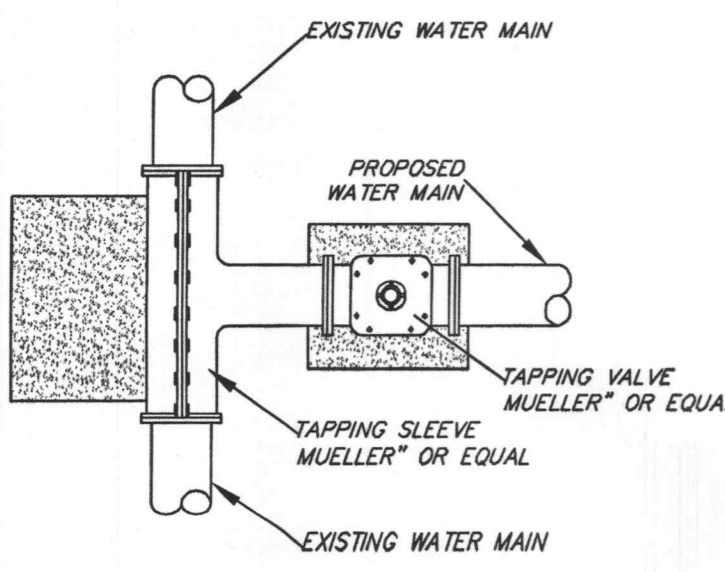


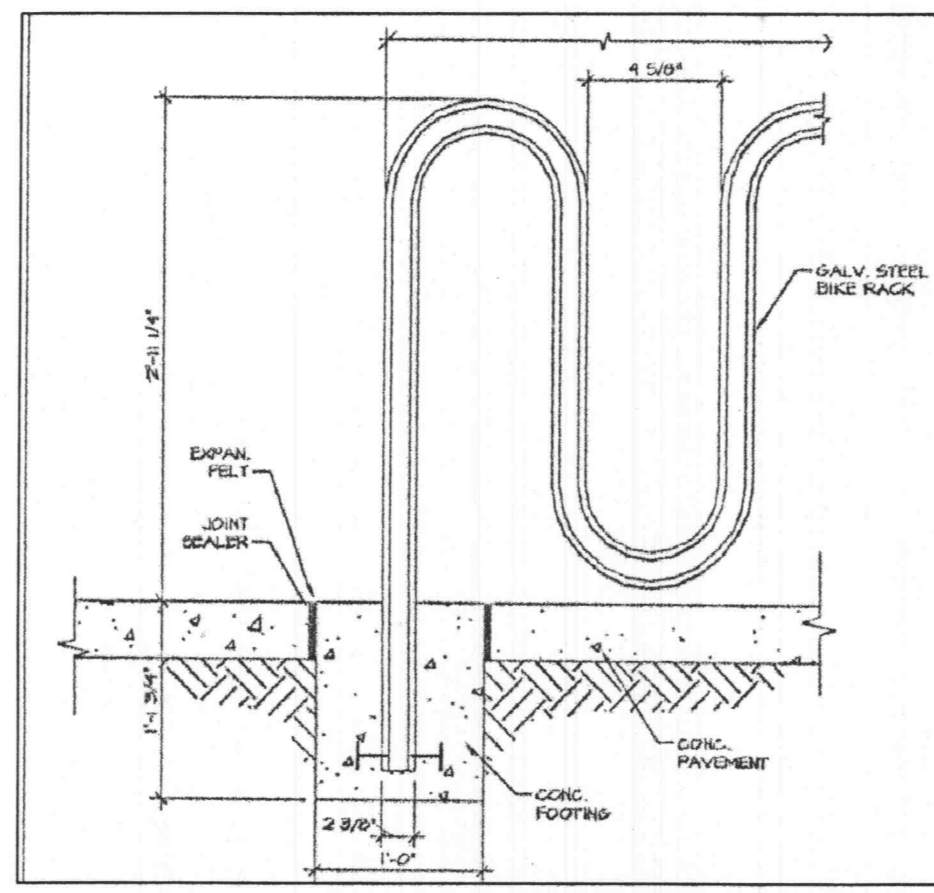
ELEV 504.00

ELEV 499.10

ELEV 498.00



OUTLET WEIR



Bike Rack Detail



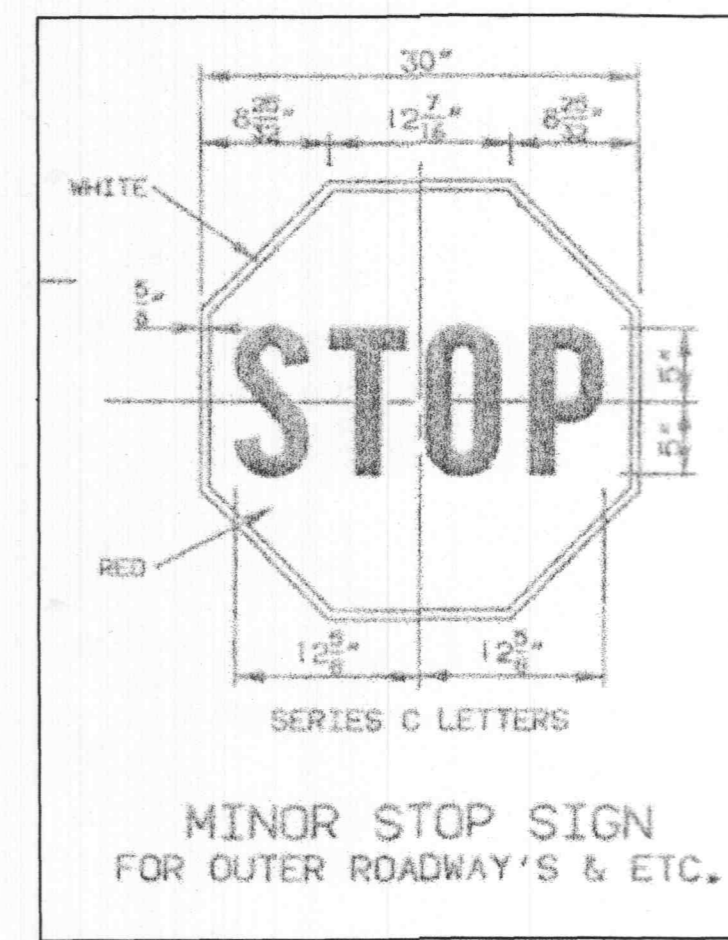
HANDICAP PARKING SIGN

MUST MEET 4.6.4 OF THE ADA STANDARDS.

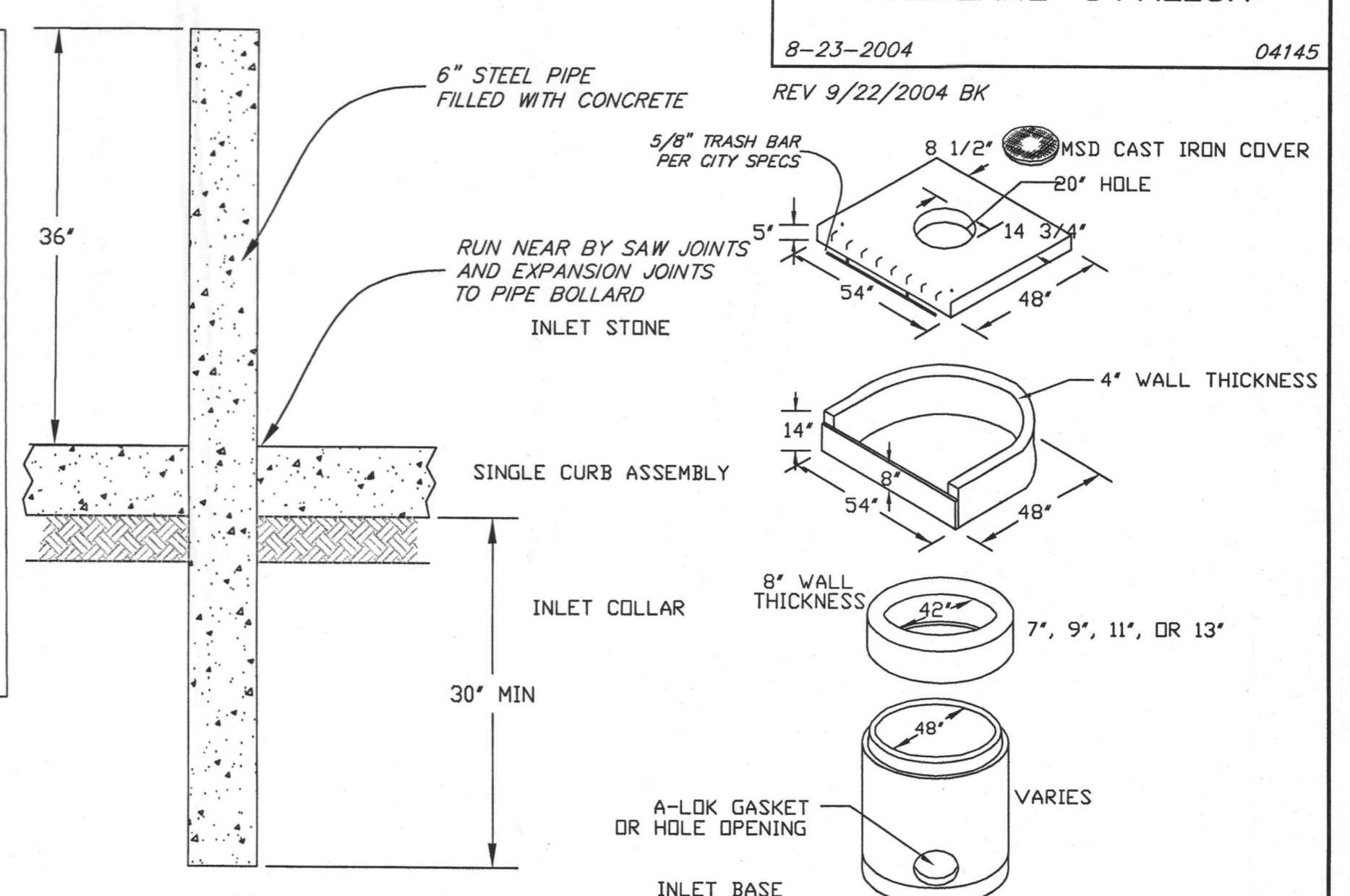
SIGN MUST BE PLACED SO THAT THE SIGN BASE IS AT LEAST 5 FEET ABOVE THE FINISHED GRADE.

OMIT "VAN ACCESSIBLE" ON STANDARD HC RESERVED SPACES.

ALL CONSTRUCTION SHALL MEET THE REQUIREMENTS OF THE "AMERICANS WITH DISABILITIES ACT ACCESSIBILITY GUIDELINES," IF ANY CONFLICT OCCURS BETWEEN THE ADAAG AND THE PLANS, THE ADAAG GUIDELINES SHALL TAKE PRECEDENCE AND THE CONTRACTOR, PRIOR TO ANY CONSTRUCTION, SHALL NOTIFY THE PROJECT ENGINEER.



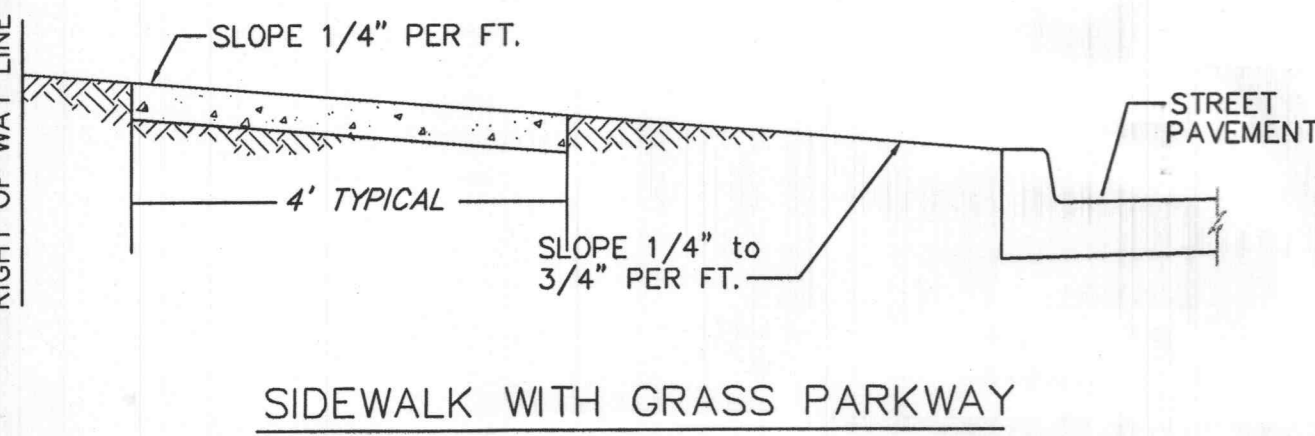
MINOR STOP SIGN FOR OUTER ROADWAYS & ETC.



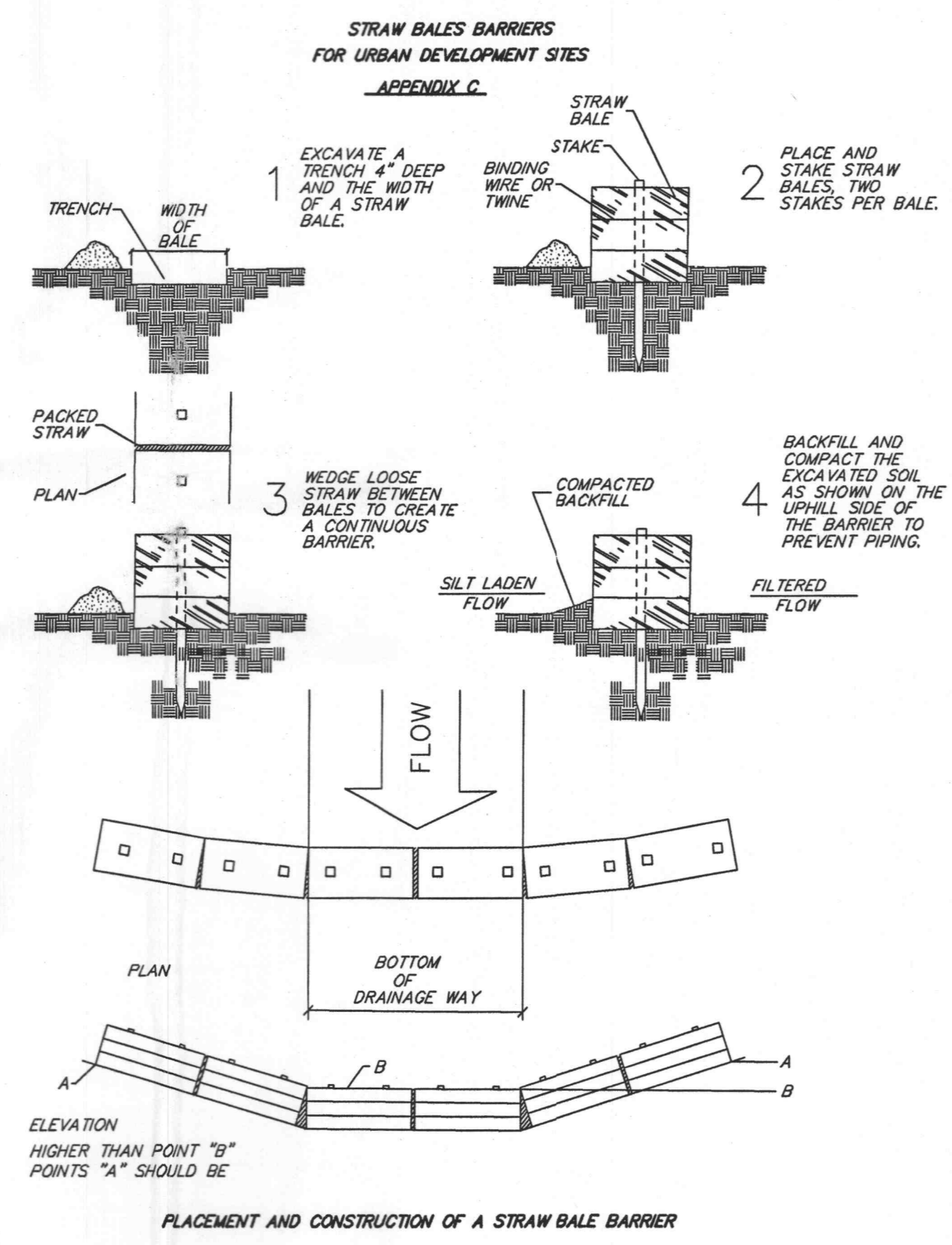
PIPE BOLLARD DETAIL

INVERT TO SPRING LINE OF PIPE TO BE PLACED IN FIELD.
ALL STRUCTURES WITH A TOTAL HEIGHT OF 4.5' OR GREATER MUST HAVE STEPS @ 16" SPACING FROM INVERT TO TOP OF STRUCTURE.
BRICK SHALL NOT BE USED IN THE CONSTRUCTION OF STORM SEWER STRUCTURES.

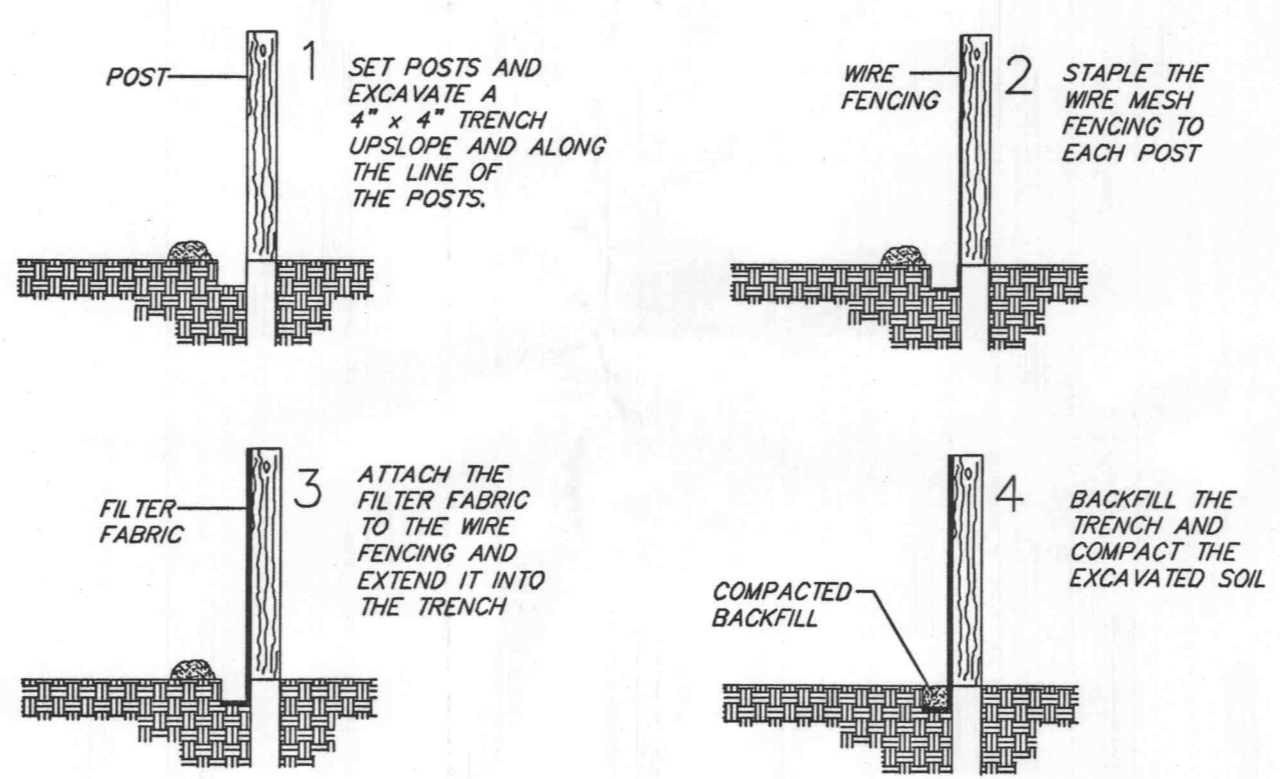
PROPOSED MAIN CONNECTION TO AN EXISTING MAIN
NOT TO SCALE



SIDEWALK WITH GRASS PARKWAY

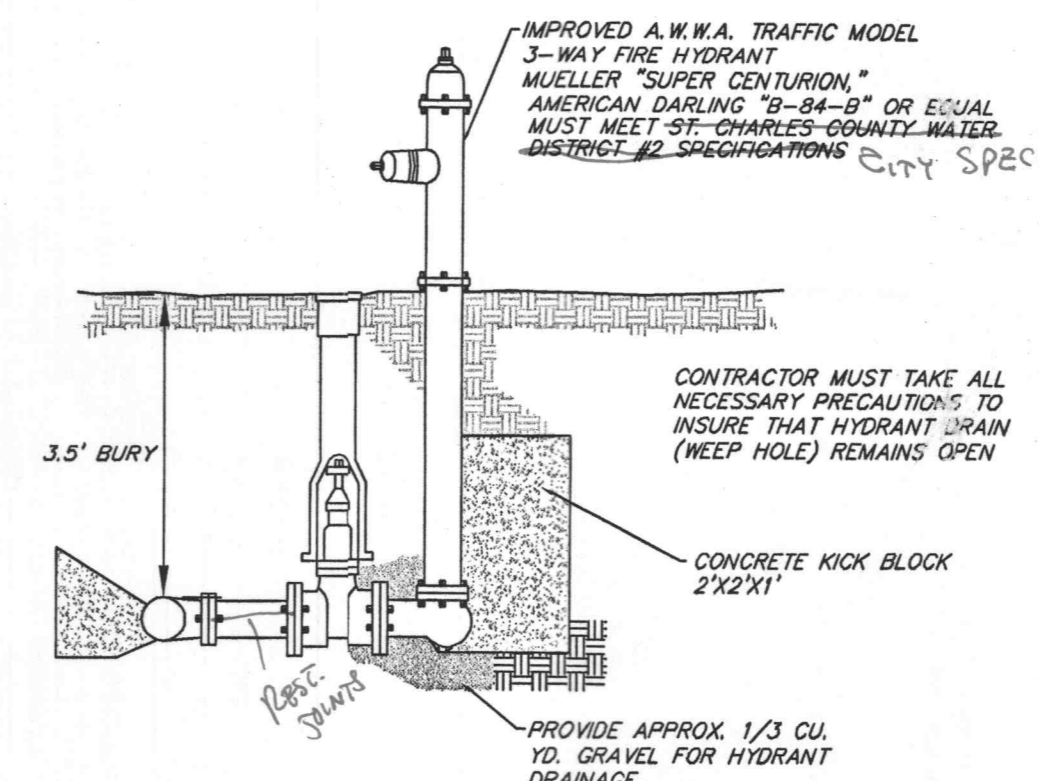


PLACEMENT AND CONSTRUCTION OF A STRAW BALE BARRIER



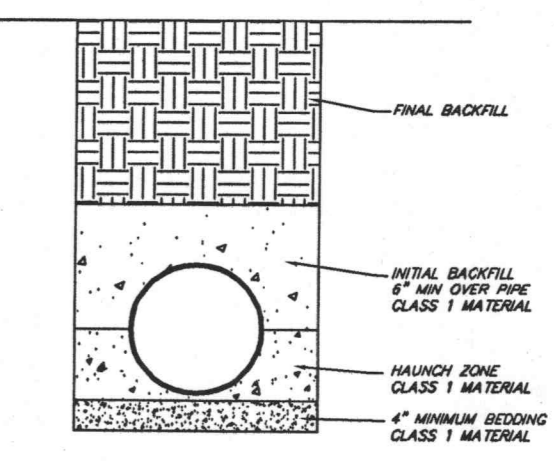
SILTATION FENCE DETAIL
NOT TO SCALE

1. FILTER BARRIERS SHALL BE INSPECTED IMMEDIATELY AFTER EACH RAINFALL AND AT LEAST DAILY DURING PROLONGED RAINFALL. ANY REQUIRED REPAIRS SHALL BE MADE IMMEDIATELY.
2. SHOULD THE FILTER DECOMPOSE OR BECOME INEFFECTIVE PRIOR TO THE END OF THE EXPECTED USABLE LIFE AND THE BARRIER STILL BE NECESSARY, THE FABRIC SHALL BE REPLACED PROMPTLY.
3. SEDIMENT DEPOSITS SHOULD BE REMOVED AFTER EACH STORM EVENT. THEY MUST BE REMOVED WHEN DEPOSITS REACH APPROXIMATELY HALF THE HEIGHT OF THE BARRIER.
4. ANY SEDIMENT DEPOSITS REMAINING IN PLACE AFTER THE SILT FENCE OR FILTER BARRIER IS NO LONGER REQUIRED SHALL BE DRESSED TO CONFORM WITH THE EXISTING GRADE, PREPARED AND SEDED.



FIRE HYDRANT INSTALLATION DETAIL
NOT TO SCALE

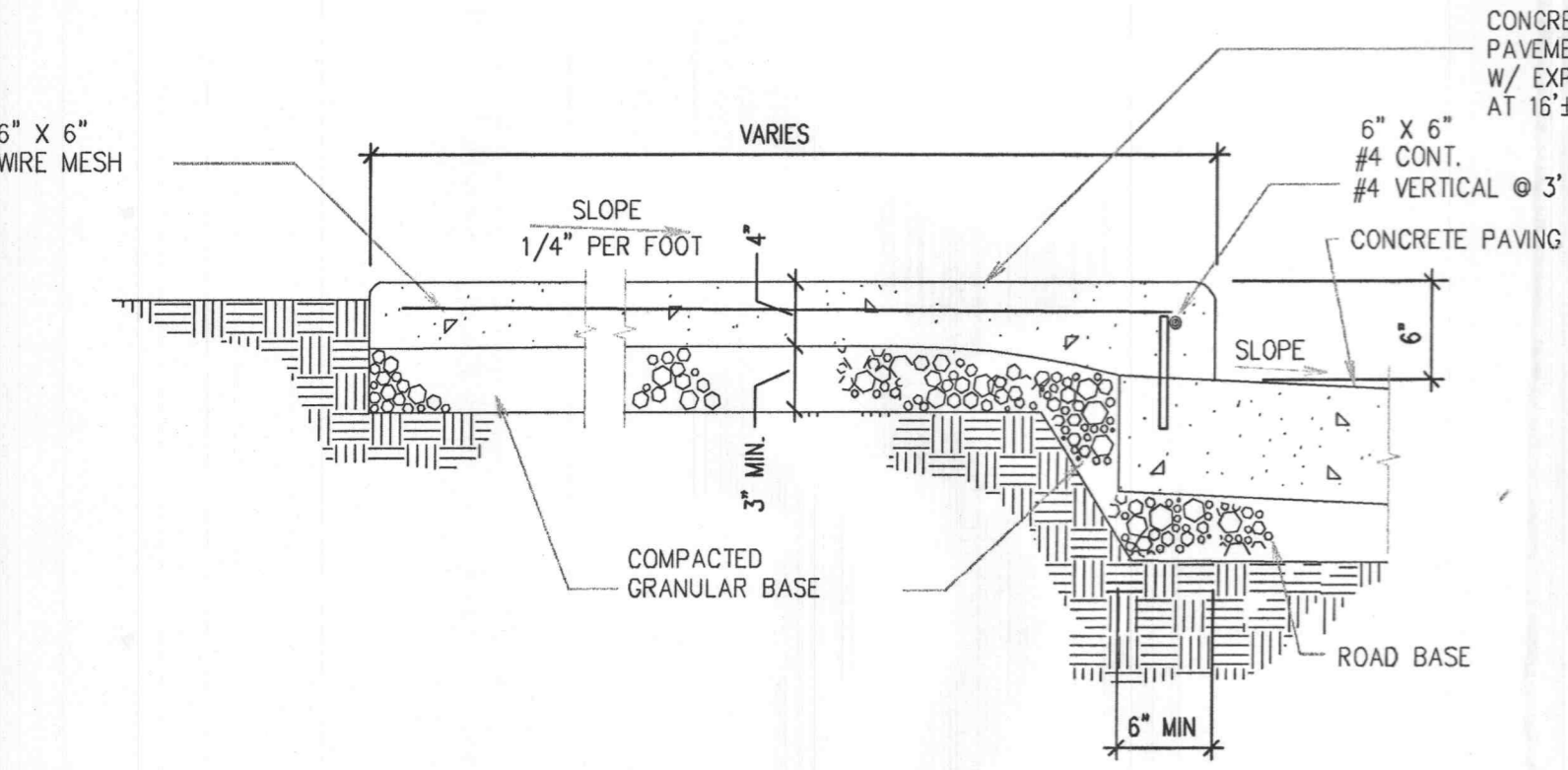
SINGLE CURB INLET



1. The use of High Density Polyethylene Corrugated pipe 4.0 S. 112 or Equal will be permitted as an acceptable alternative to reinforced concrete pipe under no circumstances. Pipe shall meet sections 9.0-233 and 44.010 10-204-201. Concrete barrel and sections and test structures shall be required. Pipe must have smooth interior and is not to be used inside the Public Right-of-Way.
2. In typical conditions the minimum trench width is determined by the size of the pipe and the ability to get compaction equipment between the pipe and the trench walls. The minimum trench width shall not be less than the outside diameter plus 18 inches or the pipe outside diameter times 1.25 plus 12 inches, whichever is greater. High speed trenchers may enable satisfactory installation of pipe in narrower trenches. Poor initial soil conditions such as rock, roots, existing utility, or excessive slope will require substantially wider trenches as well as deeper foundation and bedding. Trench width and foundation depth should be based on a thorough site investigation.
3. Backfill in the area up to the springline should be carefully placed and compacted to achieve a minimum E value of 1,000 psi as defined in ASTM D2222. A minimum of 2\"/>

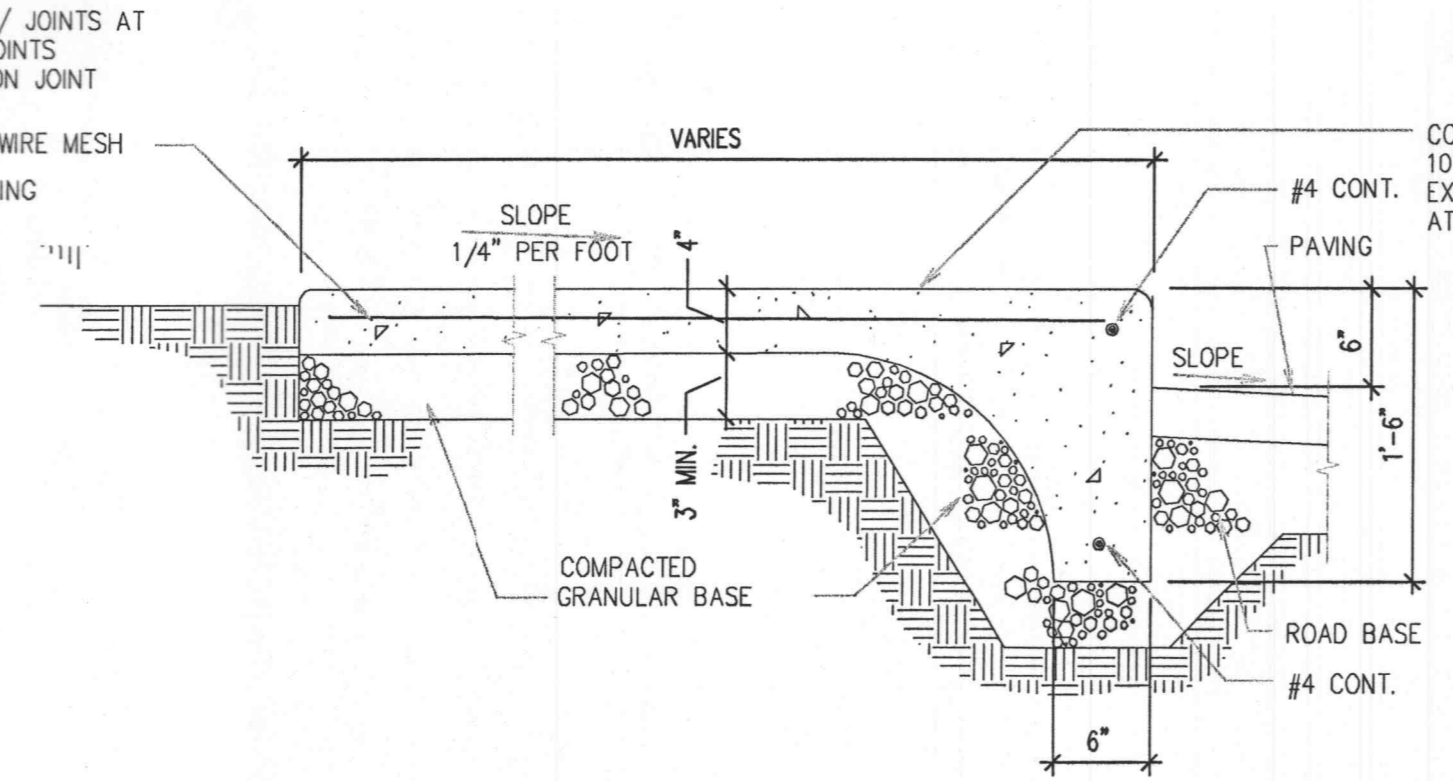
H.D.P.E. PIPE DETAIL
NOT TO SCALE

- NOTE:
1. SIDEWALK SHALL BE 4" THICK CLASS A CONCRETE.
 2. INSTALL 1/2" EXPANSION JOINTS AT INTERSECTIONS, RAMPS, STRUCTURES, AND DRIVEWAY APPROACHES.
 3. INSTALL TRANSVERSE SAW JOINTS AT SPACING = SIDEWALK WIDTH.
 4. FOR SIDEWALKS WIDER THAN 6 FT, INSTALL LONGITUDINAL SAW JOINT AT 1/2 SIDEWALK WIDTH.
 5. FOR SIDEWALKS LESS THAN 5'-0" WIDE, INSTALL A 60" BY 60" PASSING SPACE AT 200 FT MAXIMUM INTERVALS. DRIVEWAYS, RAMP LANDINGS AND INTERSECTING SIDEWALKS WHICH PROVIDE THE REQUIRED AREA QUALIFY AS PASSING SPACE. CROSS SLOPE OF PASSING SPACE CAN NOT EXCEED 1/4" PER FT.
 6. STANDARD SIDEWALK PLACEMENT IS 12" FROM RIGHT OF WAY LINE.



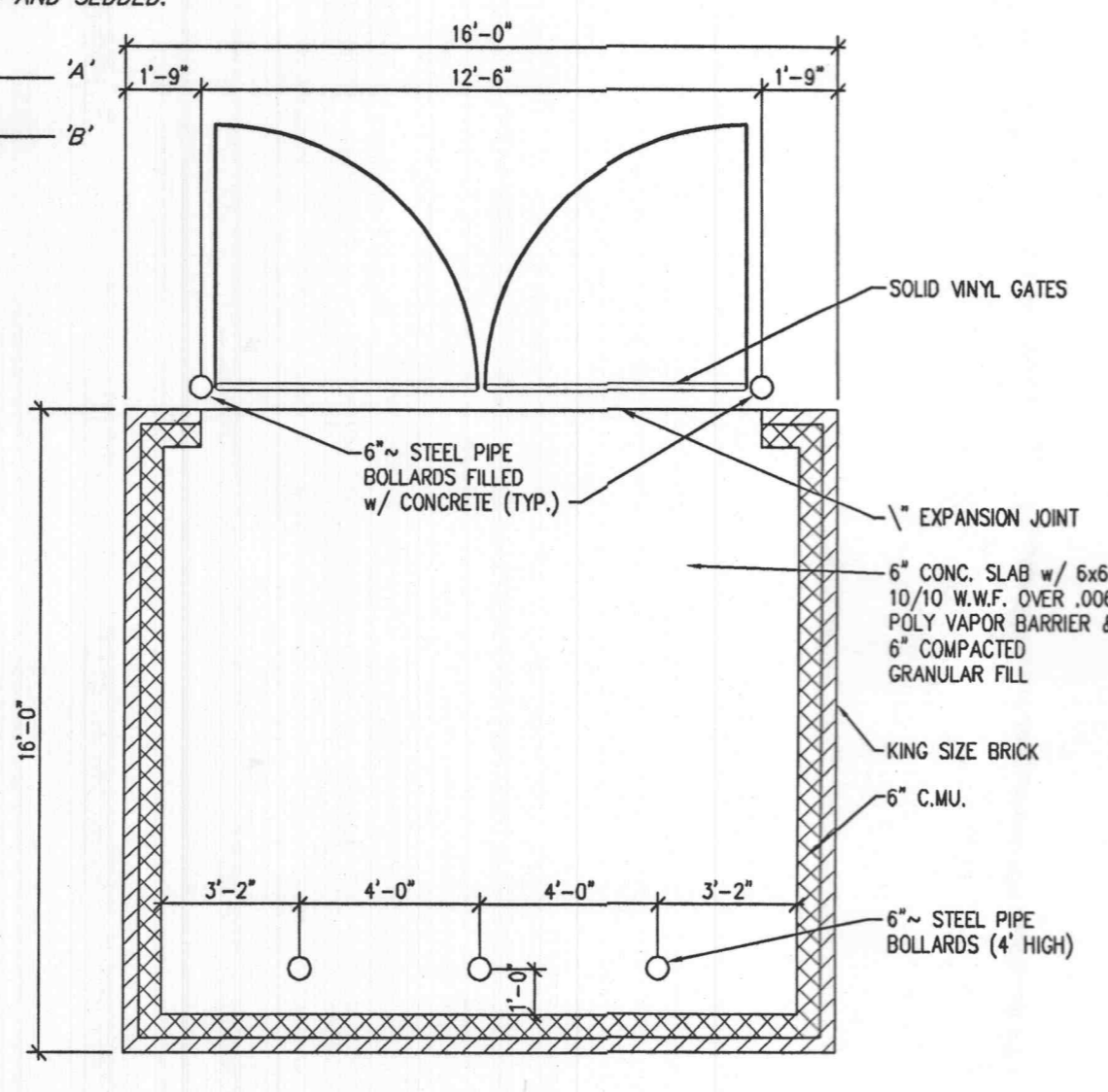
ON SITE WHERE WATER DRAINS AWAY FROM WALK

INTEGRAL WALK & CURB DETAIL
NTS

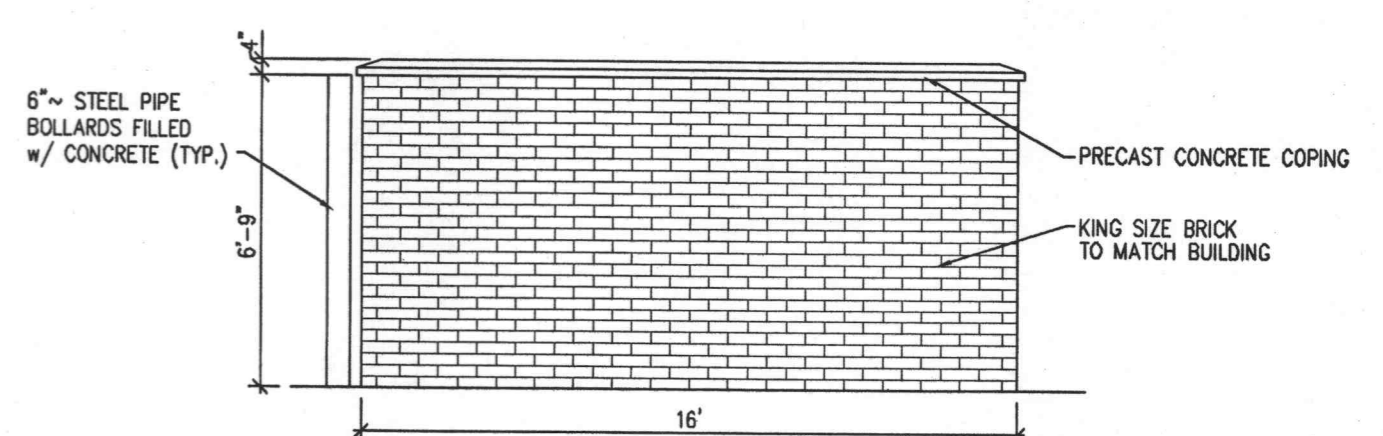


ON SITE WHERE WATER DRAINS AWAY FROM WALK

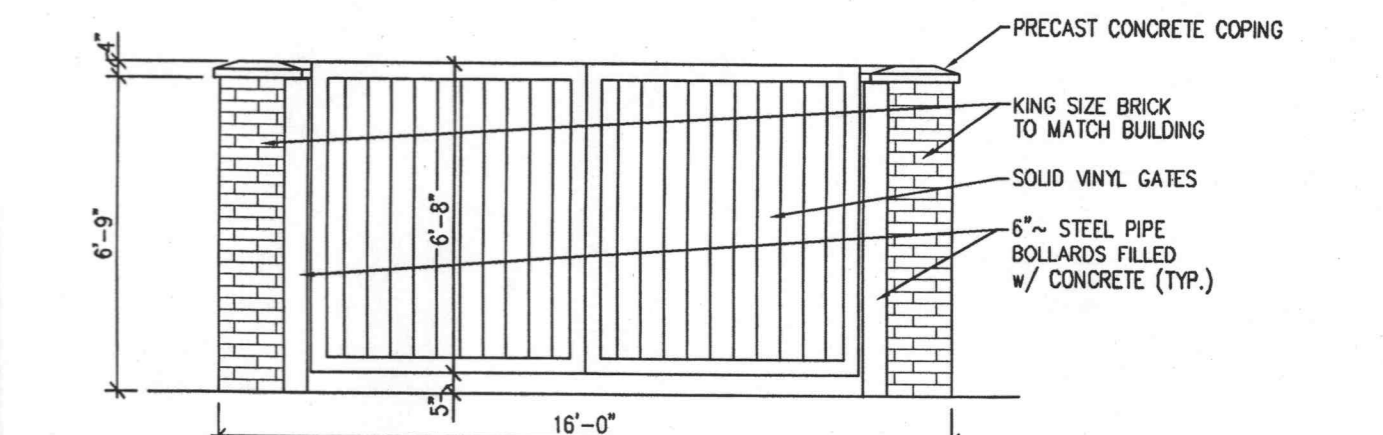
INTEGRAL WALK & CURB DETAIL
NTS



TRASH ENCLOSURE PLAN
NTS



TRASH ENCLOSURE SIDE ELEVATION
NTS



TRASH ENCLOSURE FRONT ELEVATION
NTS