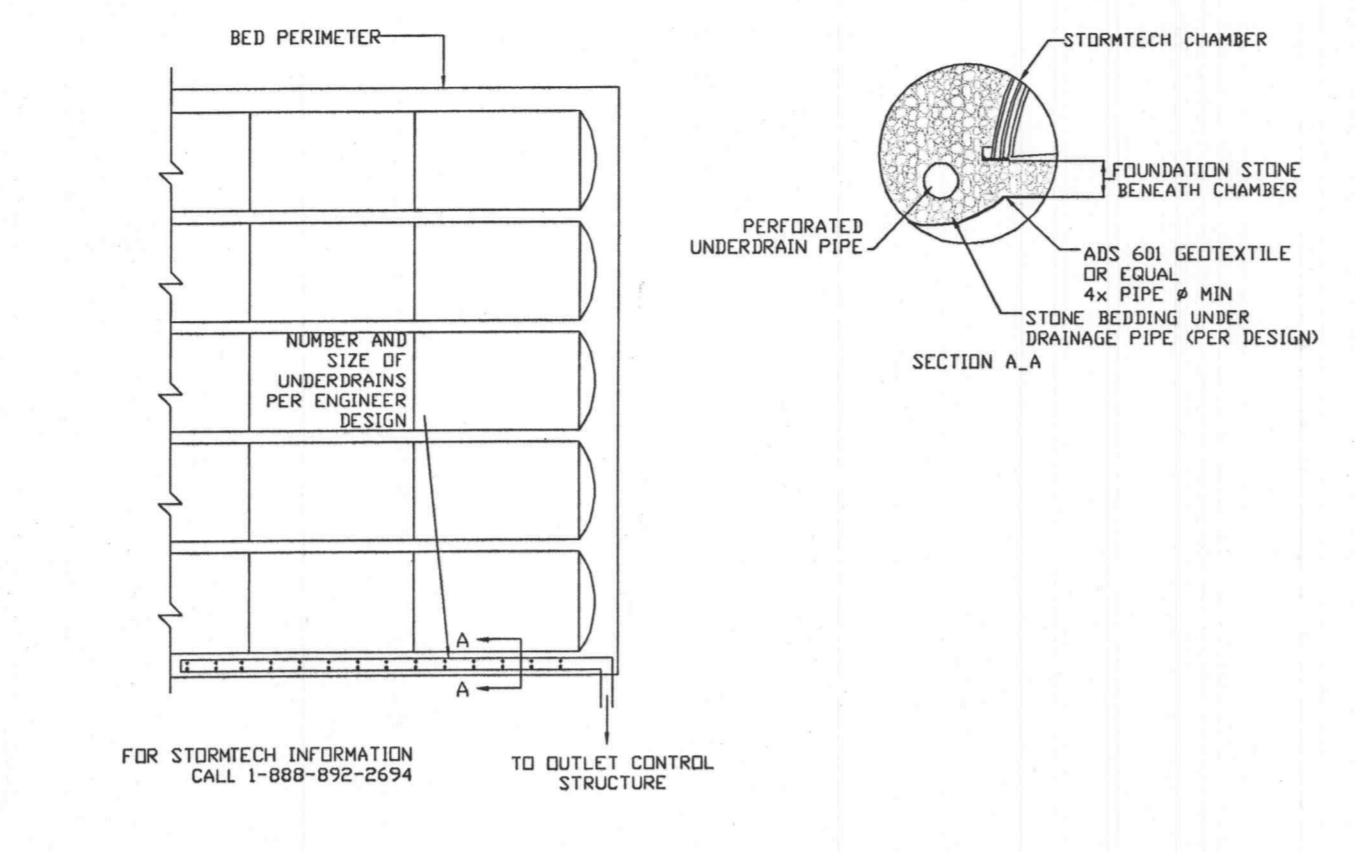
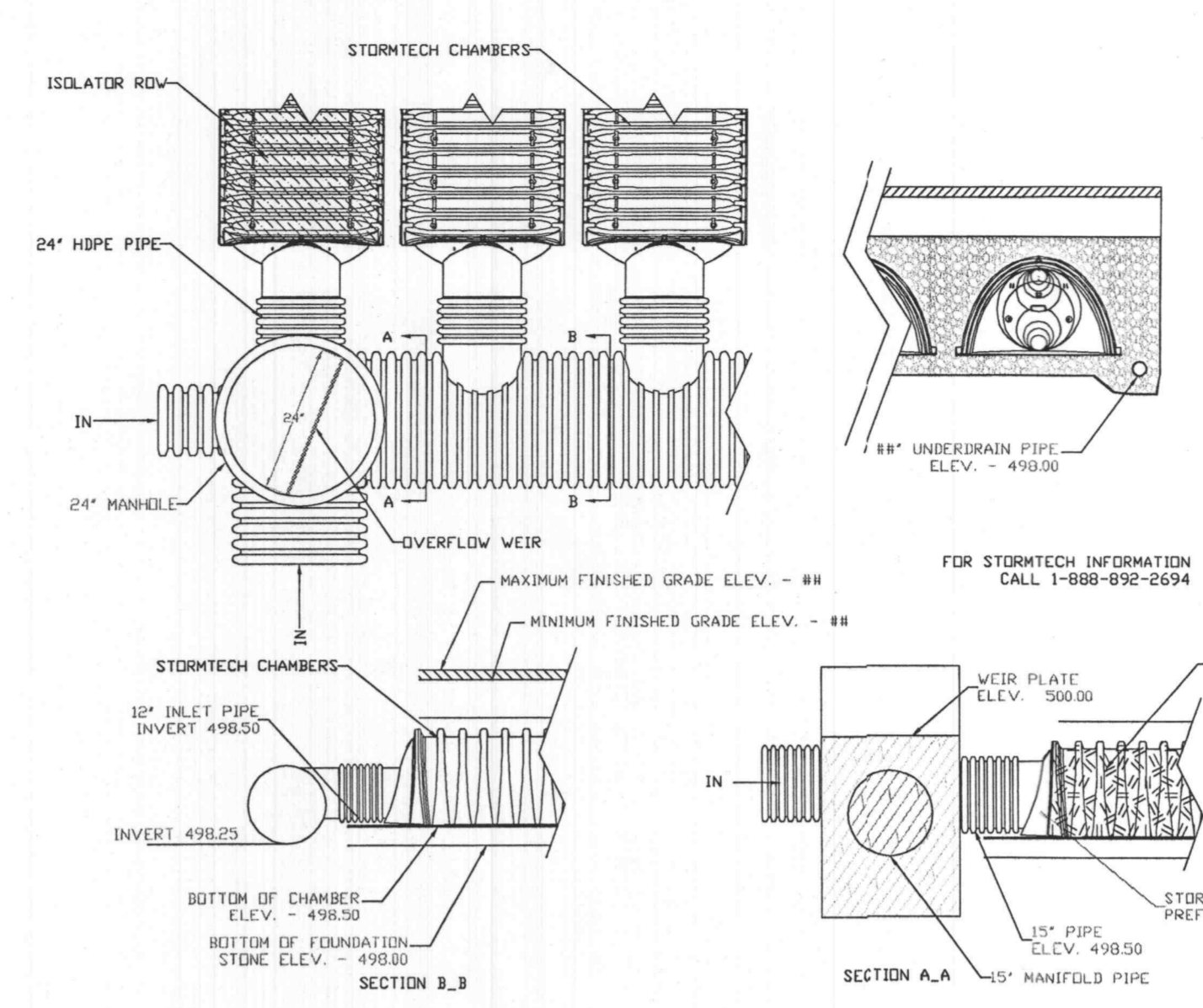


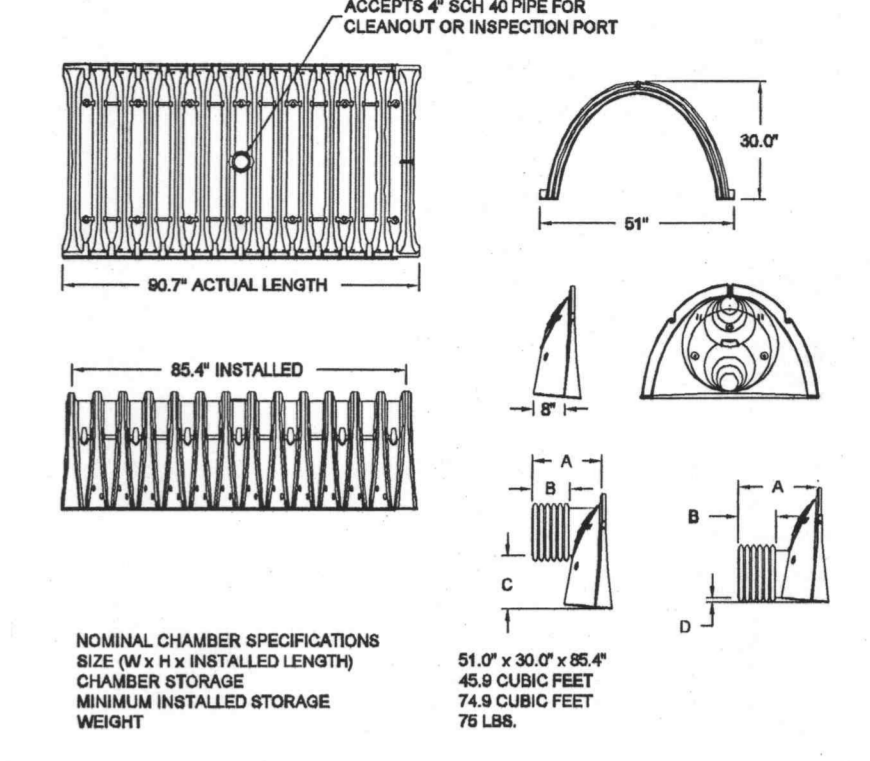
ST 1.0 SC-740 TYPICAL CROSS SECTION



ST 2.0 STORMTECH UNDERDRAIN DETAIL



ST 8.0 STORMTECH ELEVATIONS



ST 9.0 SC-740 TECHNICAL DETAILS

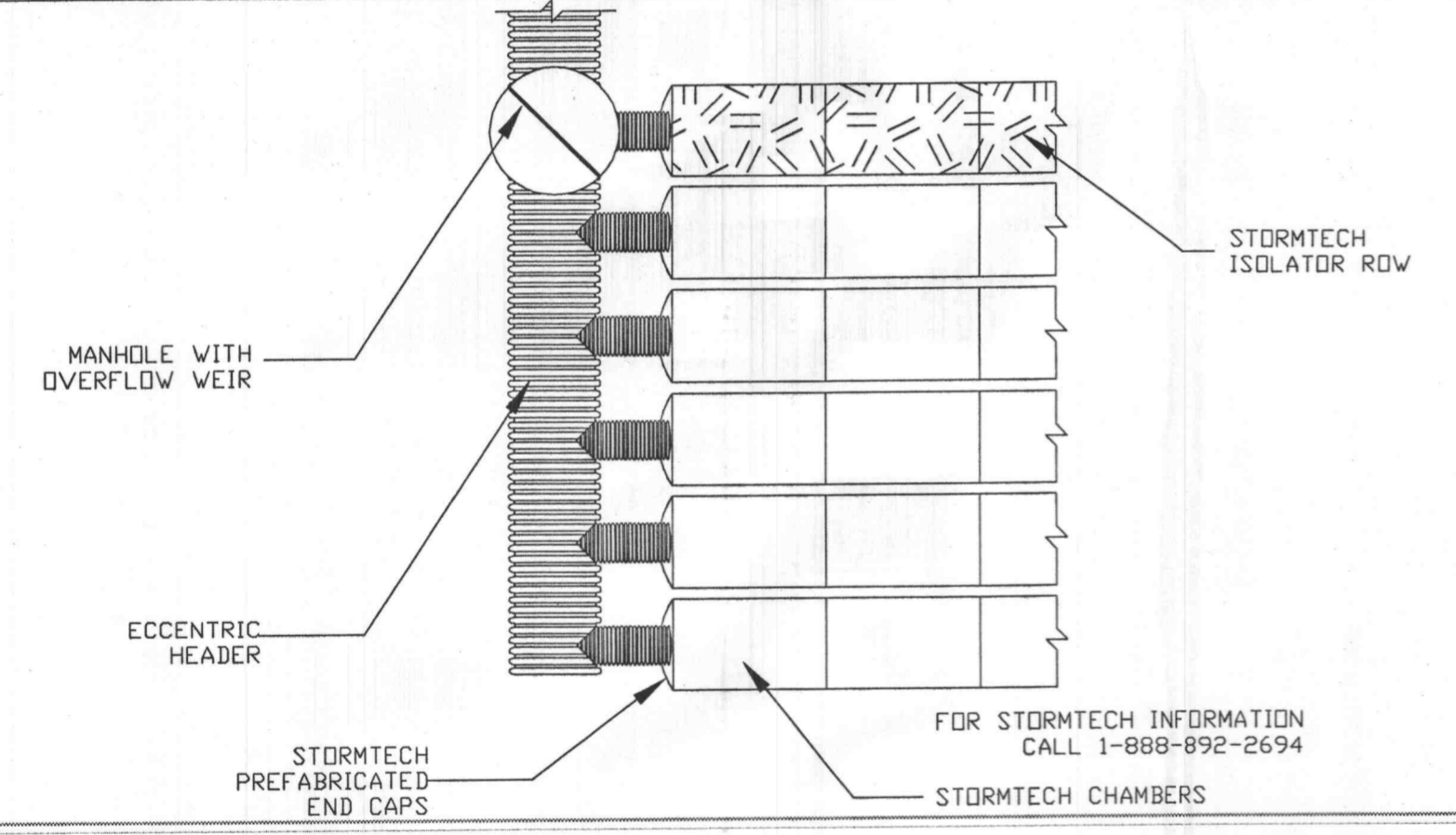
ACCEPTABLE FILL MATERIALS  
STORMTECH SC-740 CHAMBER SYSTEMS

MATERIAL LOCATION	DESCRIPTION	AASHTO M43 DESIGNATION	AASHTO M145 DESIGNATION	COMPACTION/DENSITY REQUIREMENT
FILL MATERIAL FROM 18\"/>				
FILL MATERIAL FOR 6\"/>				
EMBEDMENT STONE SURROUNDING AND TO 4\"/>				
FOUNDATION STONE BELOW CHAMBERS	WASHED ANGULAR STONE WITH THE MAJORITY OF PARTICLES BETWEEN 1/2-INCH	3, 357, 4, 467, 5, 66, 67, 6, 67, 68, 7, 76, 8, 86, 9, 10	N/A	NO COMPACTION REQUIRED

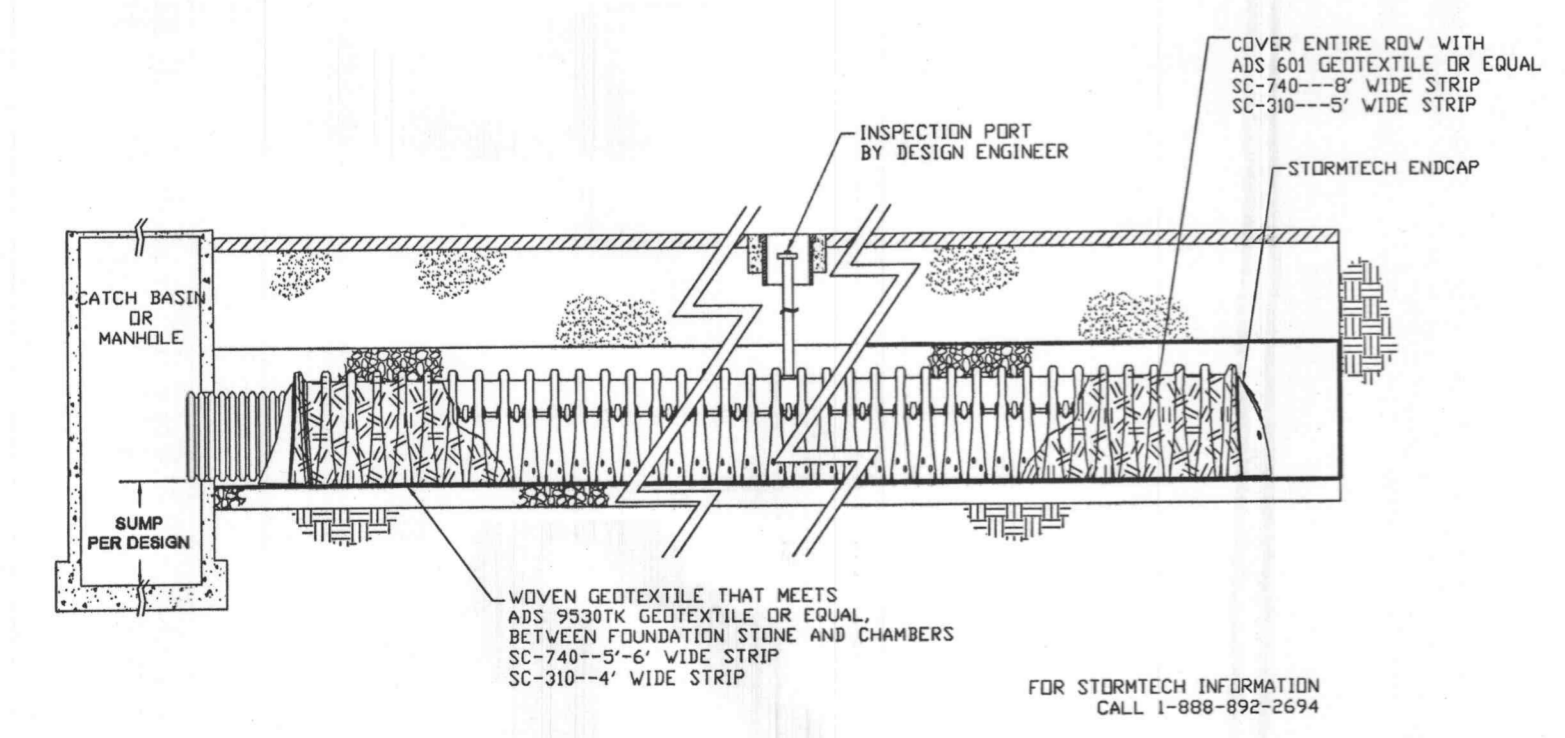
PLEASE NOTE: THE LISTED AASHTO DESIGNATIONS ARE FOR GRADATIONS ONLY. THE STONE MUST ALSO BE WASHED CRUSHED ANGULAR. FOR EXAMPLE, THE STONE MUST BE SPECIFIED AS WASHED, CRUSHED, ANGULAR NO. 4 STONE.

NOTES:  
1. ALL DESIGN SPECIFICATIONS FOR STORMTECH CHAMBERS SHALL BE IN ACCORDANCE WITH THE STORMTECH DESIGN MANUAL.  
2. THE INSTALLATION OF STORMTECH CHAMBERS SHALL BE IN ACCORDANCE WITH THE LATEST STORMTECH INSTALLATION INSTRUCTIONS.  
3. THE CONTRACTOR IS ADVISED TO REVIEW AND UNDERSTAND THE INSTALLATION INSTRUCTIONS PRIOR TO BEGINNING SYSTEM INSTALLATION. CALL 1-888-892-2694 OR VISIT [WWW.STORMTECH.COM](http://WWW.STORMTECH.COM) TO RECEIVE A COPY OF THE LATEST STORMTECH INSTALLATION INSTRUCTIONS.

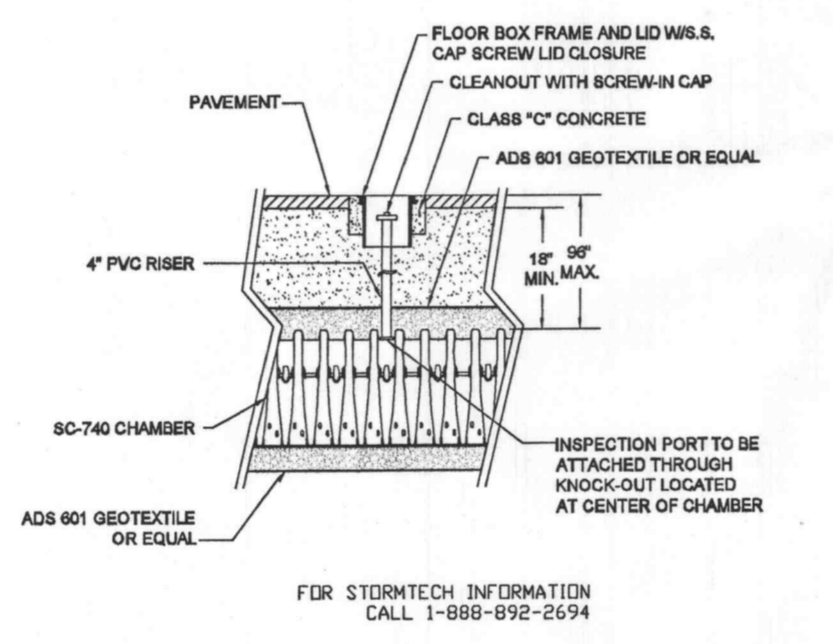
ST 3.0 STORMTECH ACCEPTABLE FILL MATERIALS



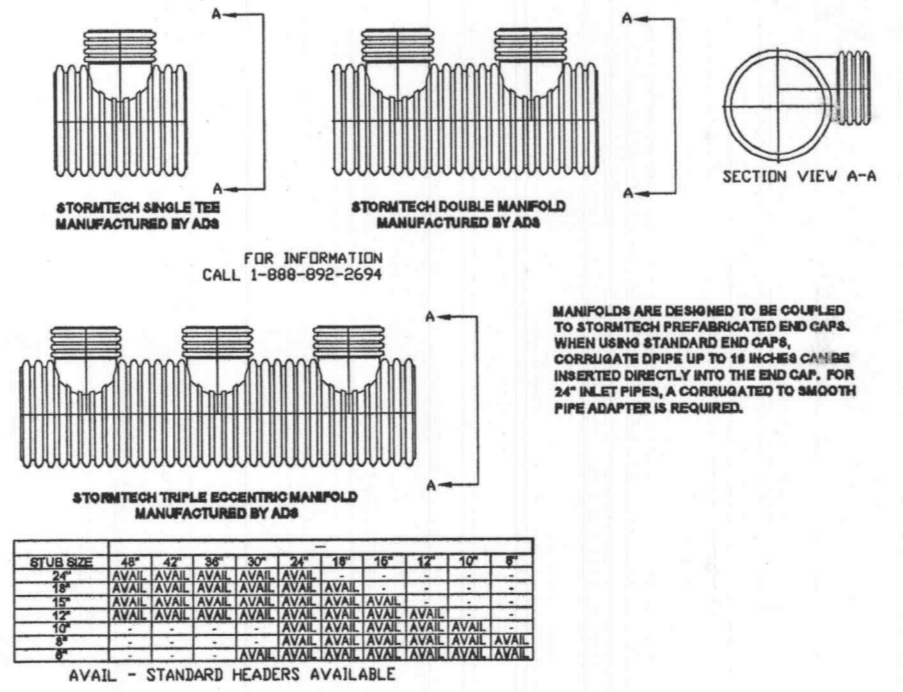
ST 4.0 STORMTECH ISOLATOR ROW MANIFOLD DETAIL



ST 6.0 STORMTECH ISOLATOR ROW DETAIL

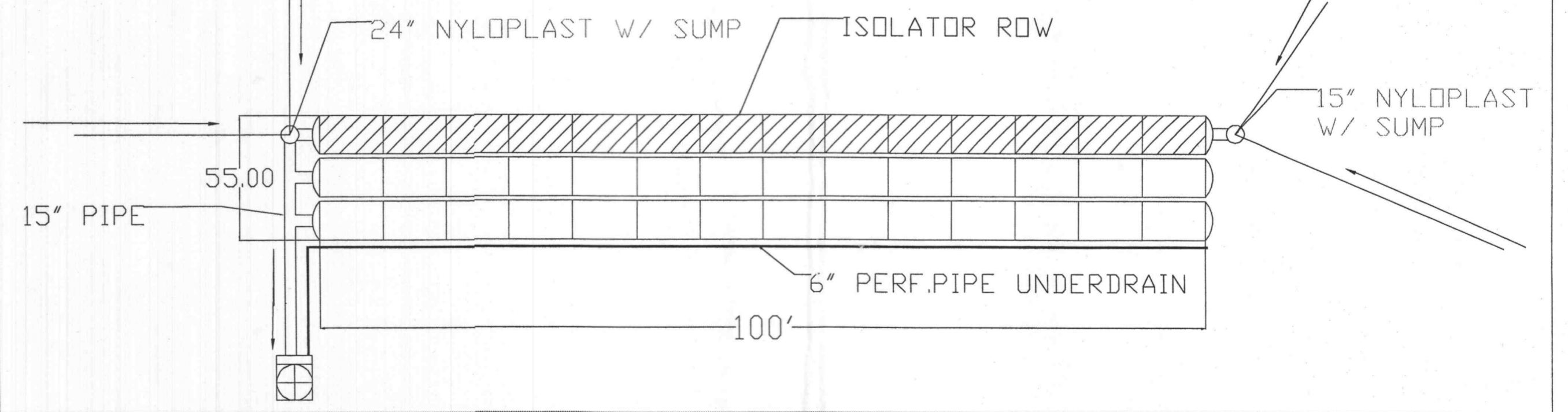


ST 5.0 STORMTECH INSPECTION PORT DETAIL



ST 7.0 ADS MANIFOLD DETAILS

-42 STORMTECH SC-740 CHAMBERS (6 INCH STONE BASE)  
 -3 LATERALS W/14 CHAMBERS EACH  
 -TOTAL STORAGE PROVIDED - 3145.80 CF  
 - PLACEMENT OF ADDITIONAL STRUCTURES AND ROOF DRAINS TO BE DETERMINED BY DESIGN ENGINEER  
 - 6\"/>



ST 10.0 STORMTECH SC-740 CHAMBER LAYOUT

STORMTECH, LLC 20 BEAVER RD, SUITE 104 WETHERSFIELD, CT 06109 888.892.2694 WWW.STORMTECH.COM		STORMTECH SC-740 CHAMBER DETAIL SHEET FASTLANE O'FALLON, MO	
SCALE	NTS	REV.	A
DATE	7/30/2004	ACAD No. SC-740 DETAIL SHEET.DWG	
DRAWN BY:	KS	SHEET	10 OF 11