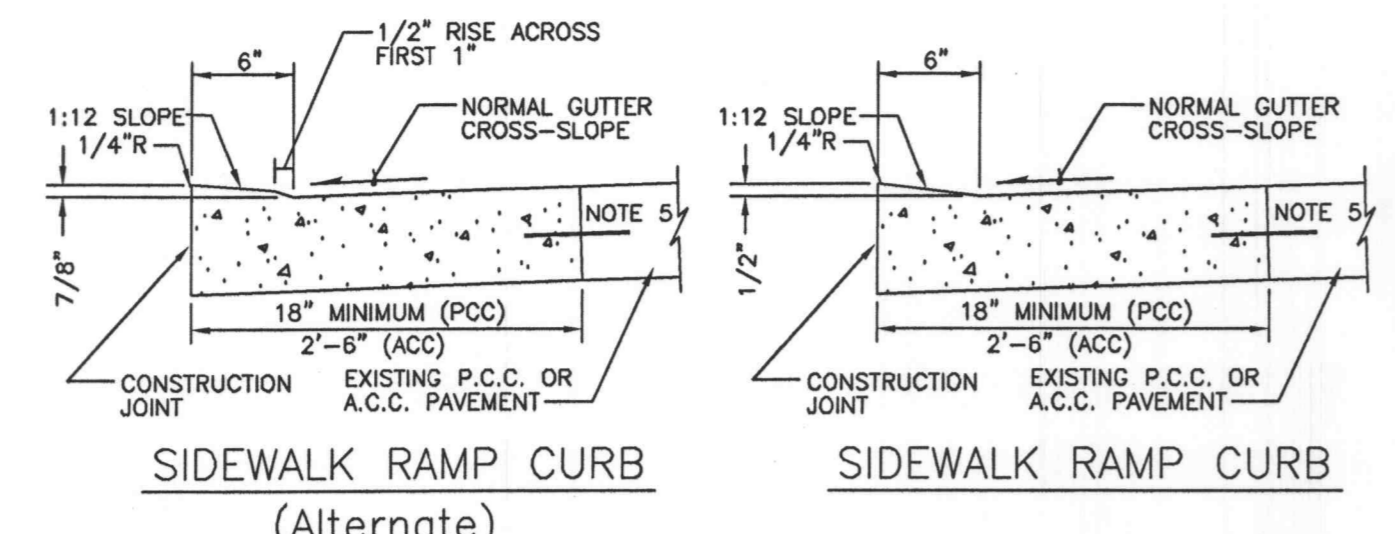


- NOTE:
- RAMP SHALL BE 4" THICK CLASS A CONCRETE.
  - EXPANSION JOINT SHALL BE 1/2" PREFORMED CORK OR BITUMINOUS EXPANSION JOINT MATERIAL.
  - MAXIMUM RAMP CROSS SLOPE IS 1/4" PER FT.
  - ALL SLOPES ARE MEASURED FROM THE HORIZONTAL.
  - REPLACE STANDARD CURB SECTION WITH SIDEWALK RAMP CURB SECTION - DETAIL 400.01
  - RAMP LENGTH IS DEPENDENT ON 1:12 MAX. SLOPE. USE FLATTER WHEN POSSIBLE.
  - RAMP EXTENDS INTO SIDEWALK, FLARE SLOPE MUST NOT EXCEED 1:12.
  - CURB TRANSITION LENGTH IS DEPENDENT ON 1:12 FLARE SLOPE.

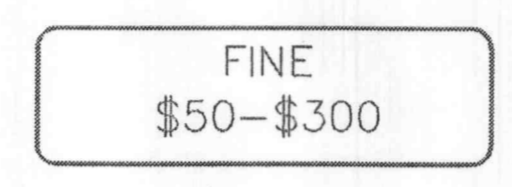
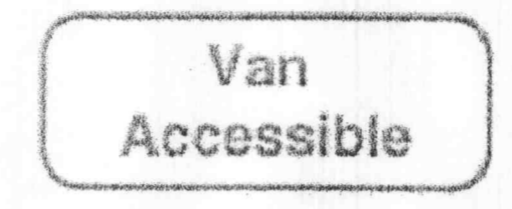
SIDEWALK RAMP  
Sidewalk at Back of Curb 432.01



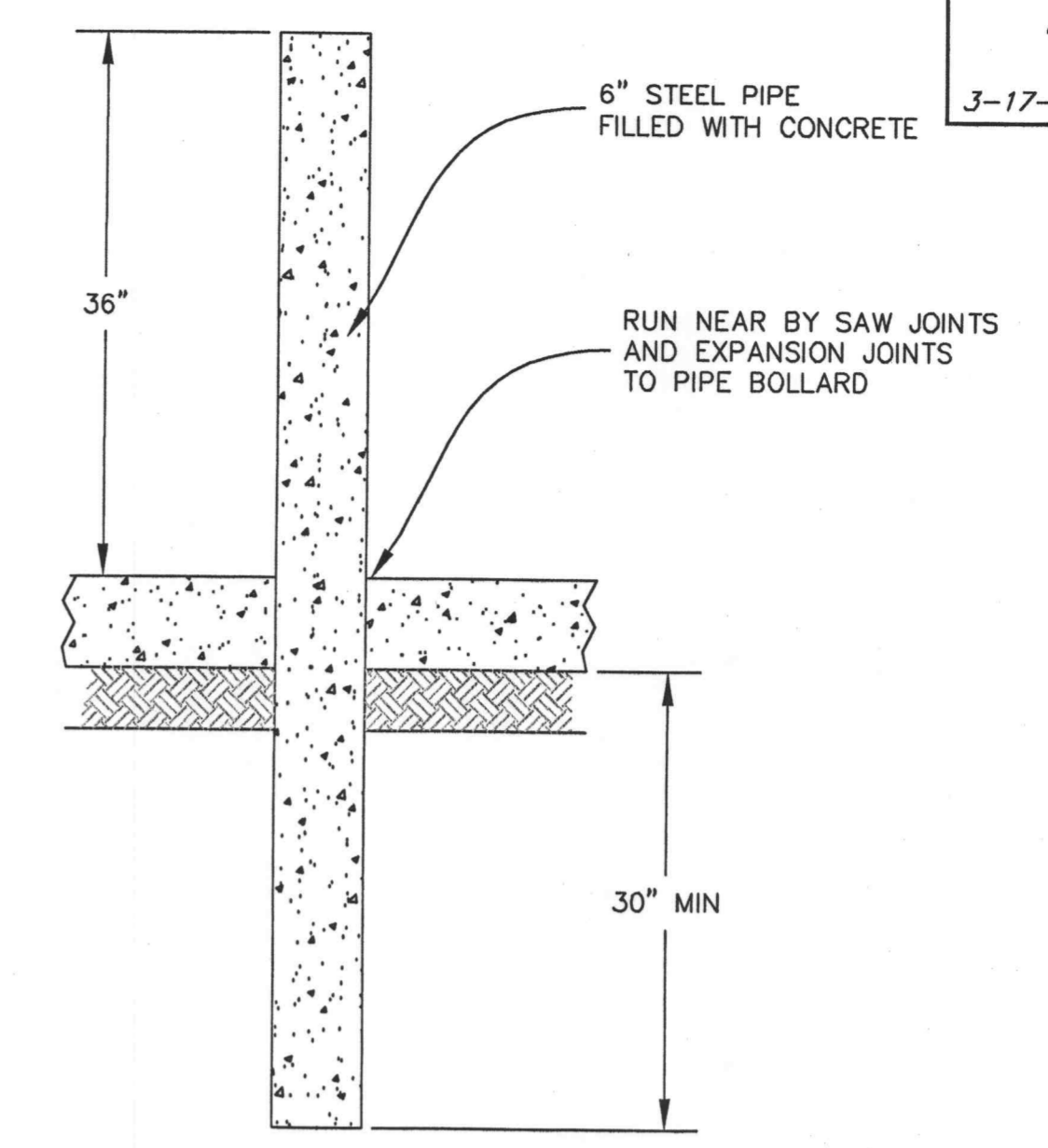
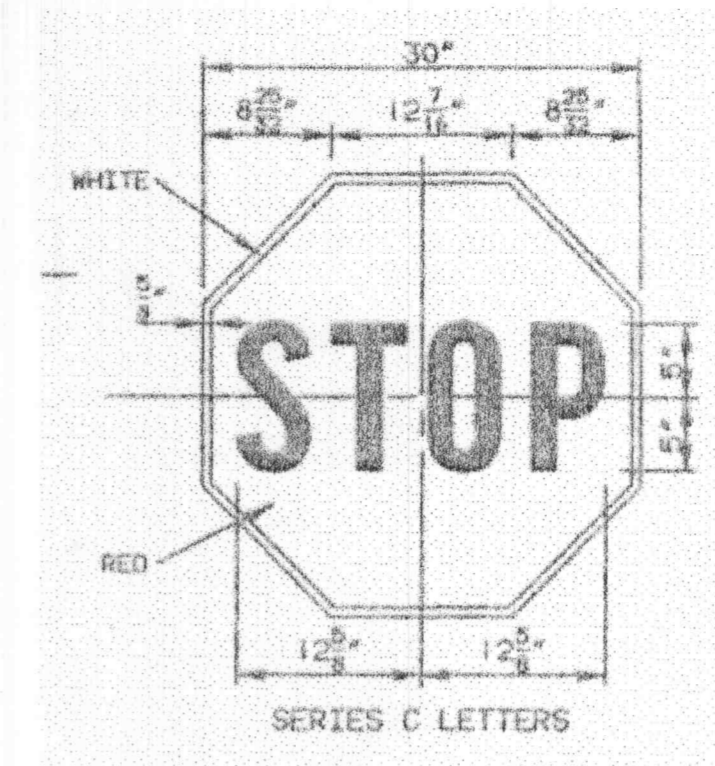
- PCC PAVEMENT NOTES:
- CONCRETE SHALL BE CLASS A.
  - PAVEMENT THICKNESS SHALL MATCH EXISTING. BASE SHALL MATCH EXISTING.
  - EXPANSION JOINTS AND CONTRACTION JOINTS SHALL BE PLACED AT LOCATIONS SIMILAR TO THE PAVEMENT WHICH WAS REMOVED.
  - CURB EDGE SHALL BE TOOLED WITH 1/4" RADIUS
  - WHERE EXISTING PAVEMENT IS P.C.C., LOW CURB REPLACEMENT SHALL BE DOWELLED INTO EXISTING. 12" LONG #4 BARS AT 24" CTR.
- ACC PAVEMENT NOTES:
- CONCRETE SHALL BE CLASS A.
  - GUTTER THICKNESS SHALL MATCH EXISTING. BASE SHALL MATCH EXISTING.
  - EXPANSION JOINTS AND CONTRACTION JOINTS SHALL BE PLACED AT LOCATIONS SIMILAR TO THE CURB AND GUTTER WHICH WAS REMOVED.
  - CURB EDGE SHALL BE TOOLED WITH 1/4" RADIUS

CURB DETAILS  
(Sidewalk Ramp) 400.01

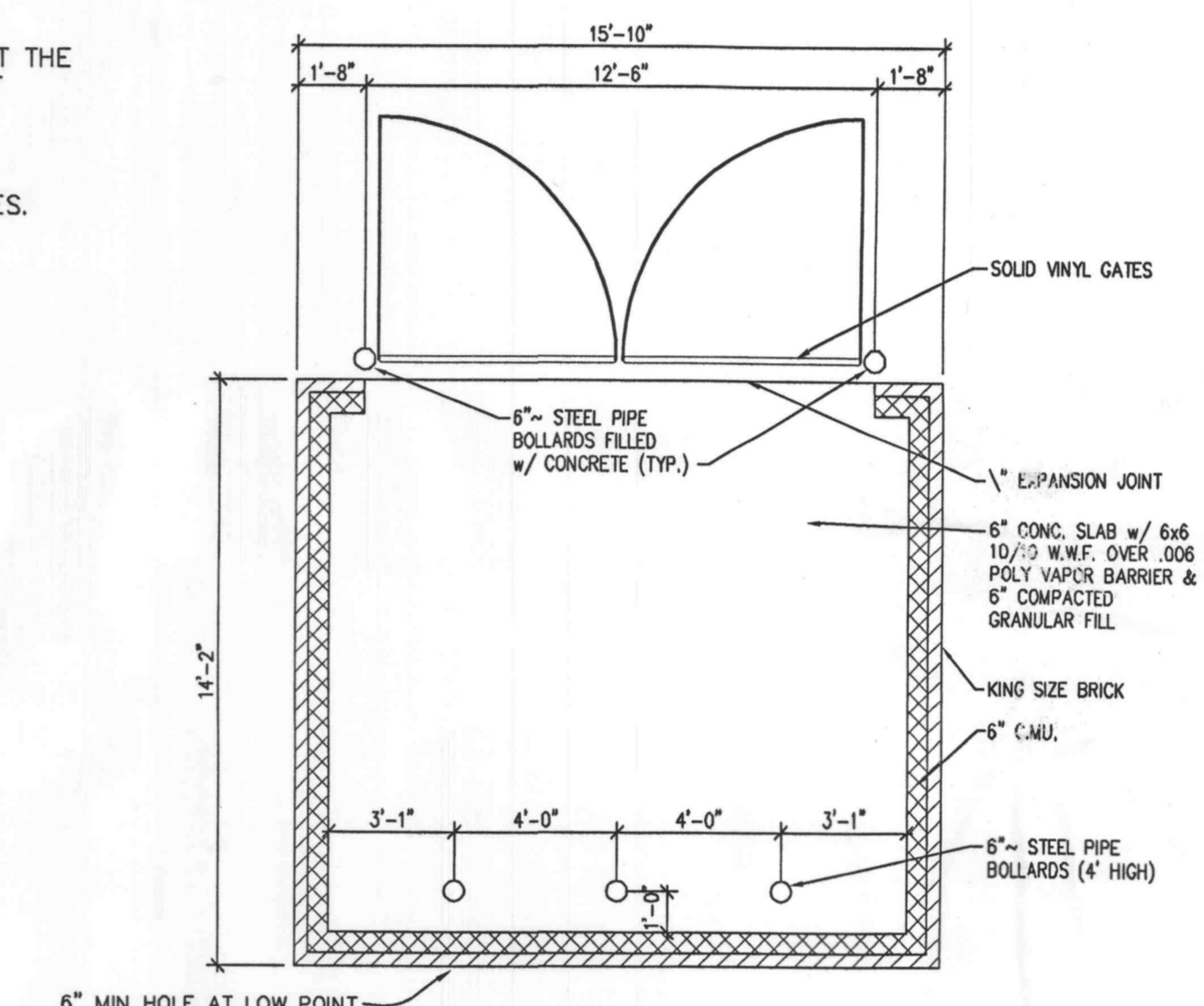
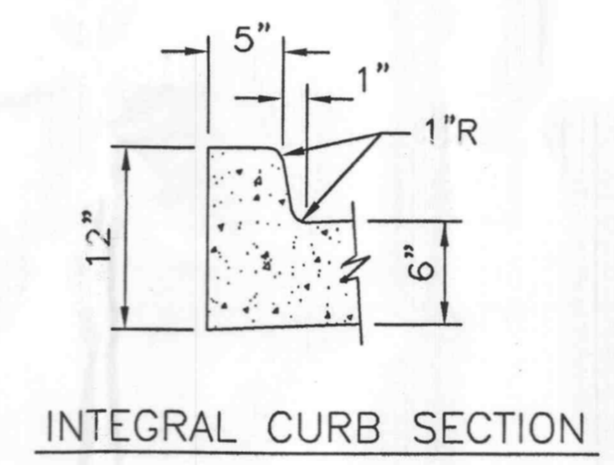
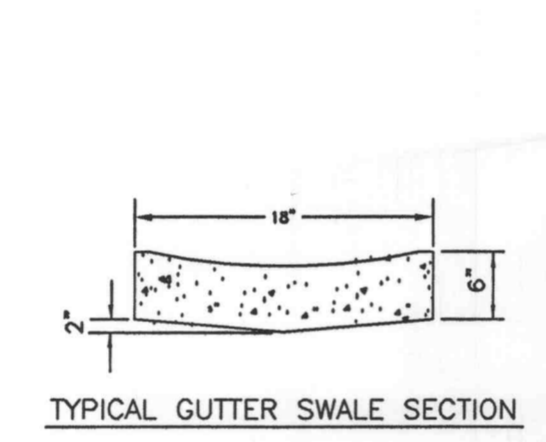
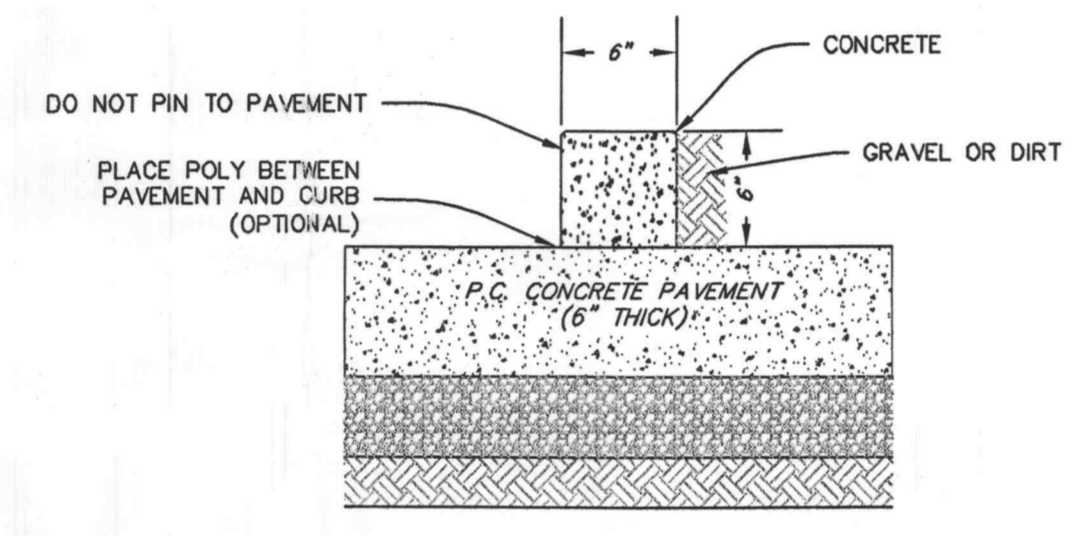
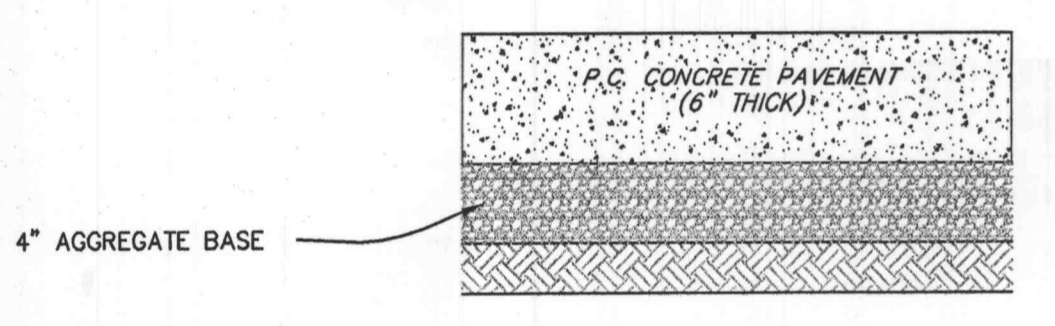
ALL CONSTRUCTION SHALL MEET THE REQUIREMENTS OF THE "AMERICANS WITH DISABILITIES ACT ACCESSIBILITY GUIDELINES." IF ANY CONFLICT OCCURS BETWEEN THE ADAAG AND THE PLANS, THE ADAAG GUIDELINES SHALL TAKE PRECEDENCE AND THE CONTRACTOR, PRIOR TO ANY CONSTRUCTION, SHALL NOTIFY THE PROJECT ENGINEER.



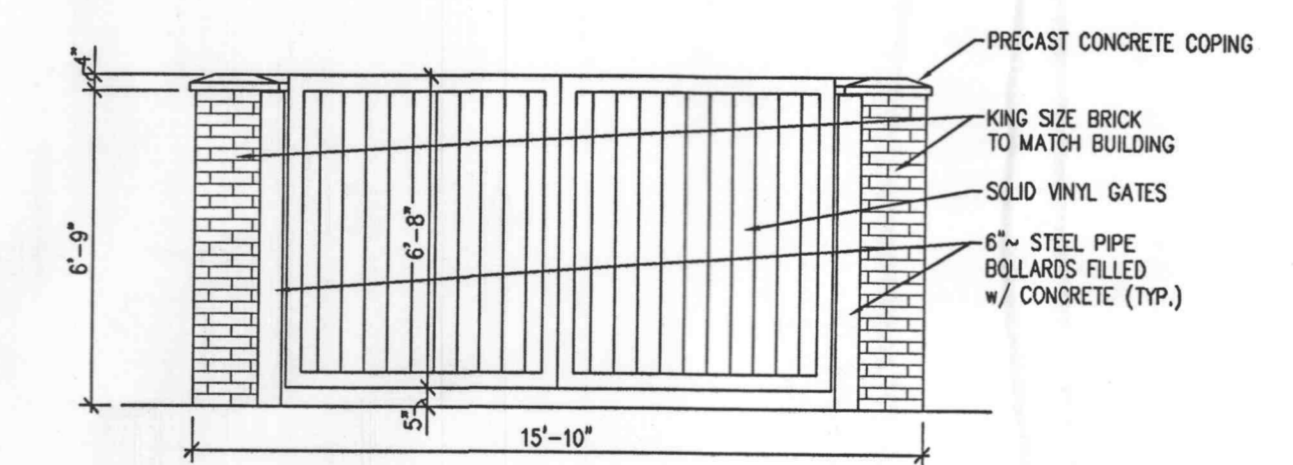
HANDICAP PARKING SIGN  
MUST MEET 4.6.4 OF THE ADA STANDARDS.  
SIGN MUST BE PLACED SO THAT THE SIGN BASE IS AT LEAST 5 FEET ABOVE THE FINISHED GRADE.  
OMIT "VAN ACCESSIBLE" ON STANDARD HC RESERVED SPACES.



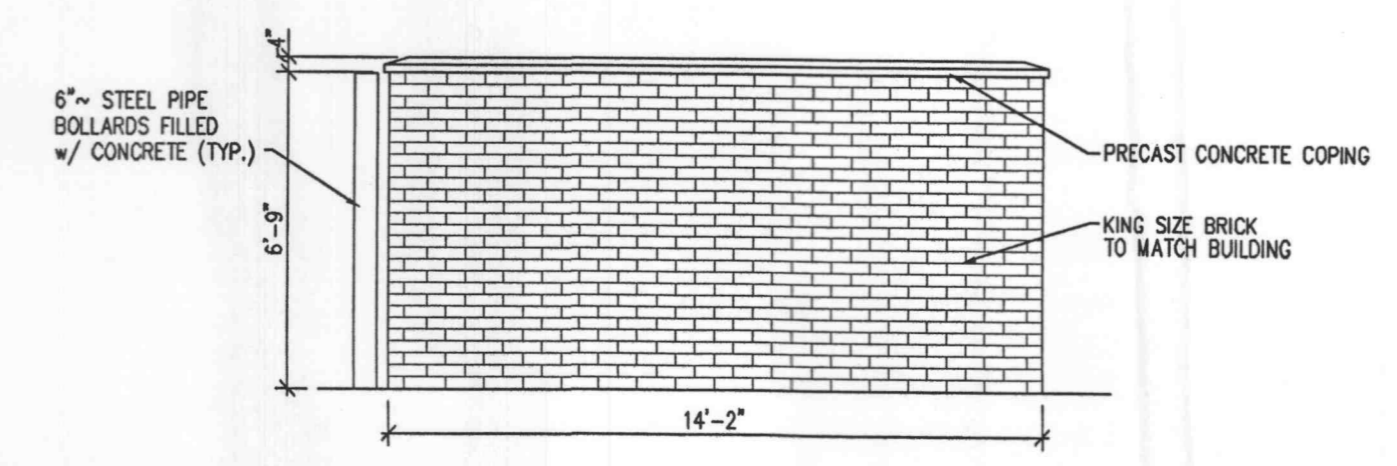
PIPE BOLLARD DETAIL



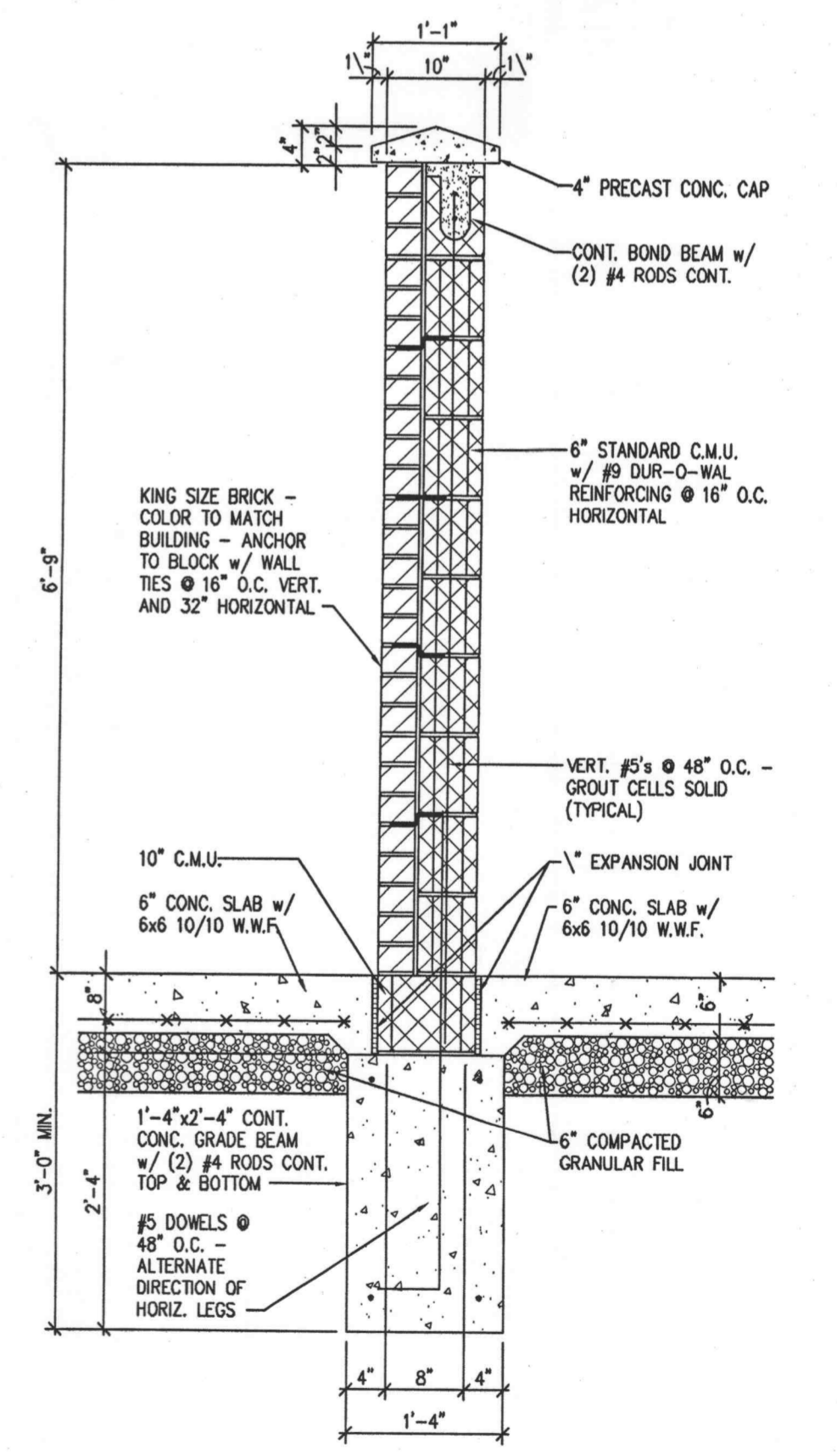
TRASH ENCLOSURE PLAN  
NTS



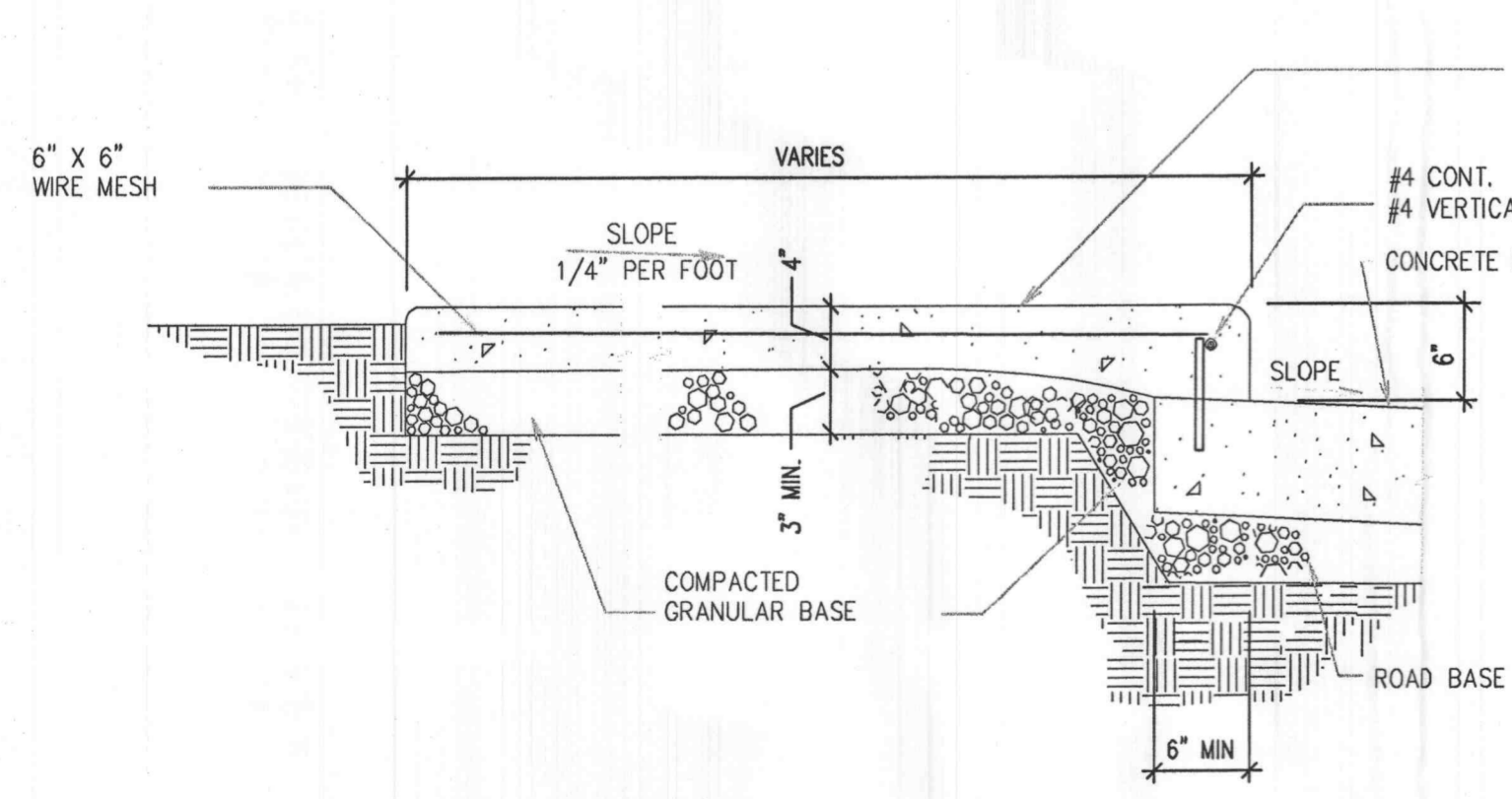
TRASH ENCLOSURE FRONT ELEVATION  
NTS



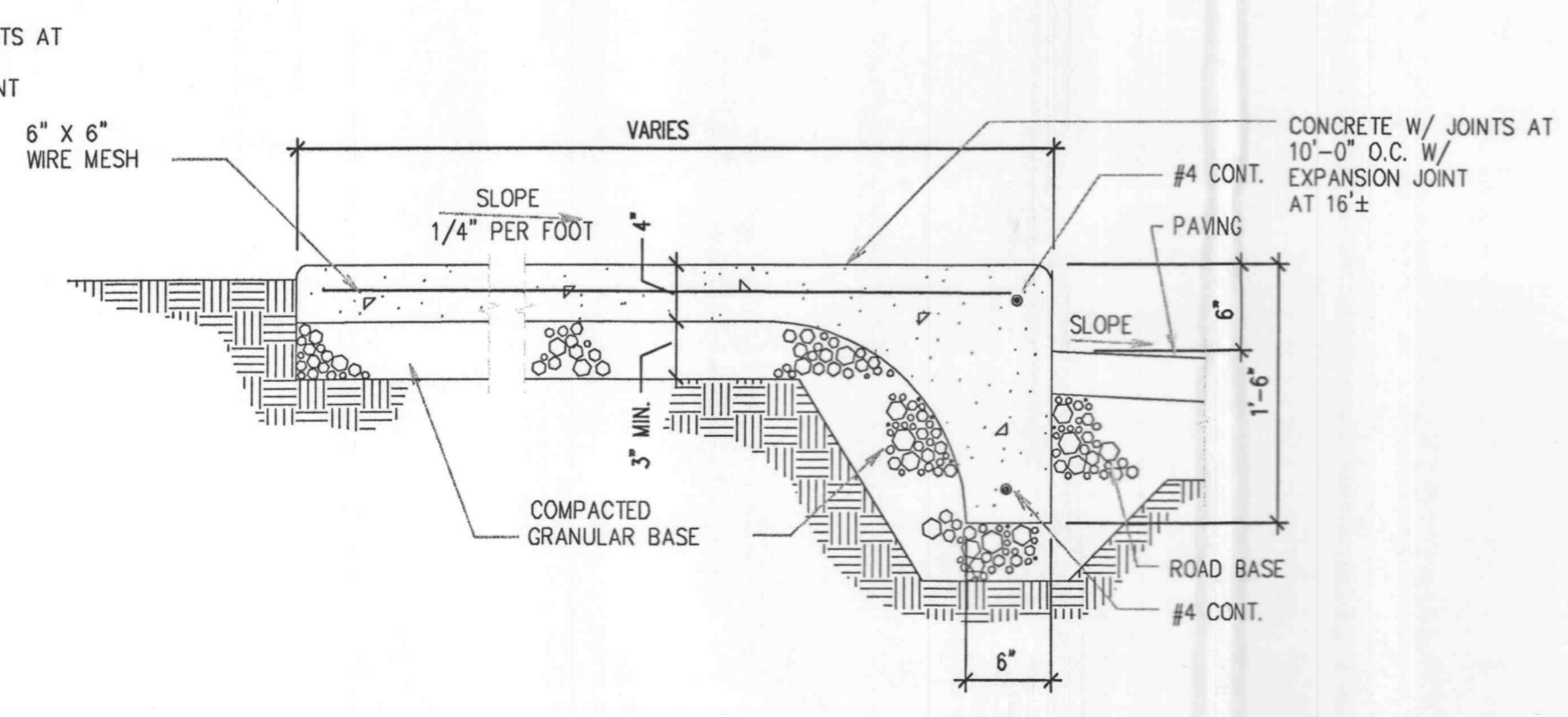
TRASH ENCLOSURE SIDE ELEVATION  
NTS



TRASH ENCLOSURE WALL  
NTS



INTEGRAL WALK & CURB DETAIL  
NTS



INTEGRAL WALK & CURB DETAIL  
NTS