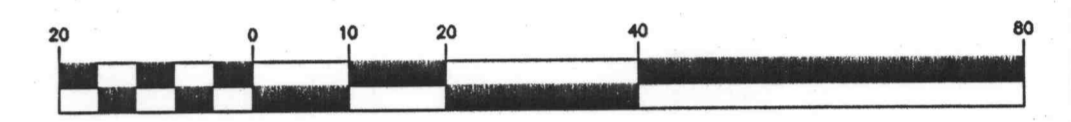
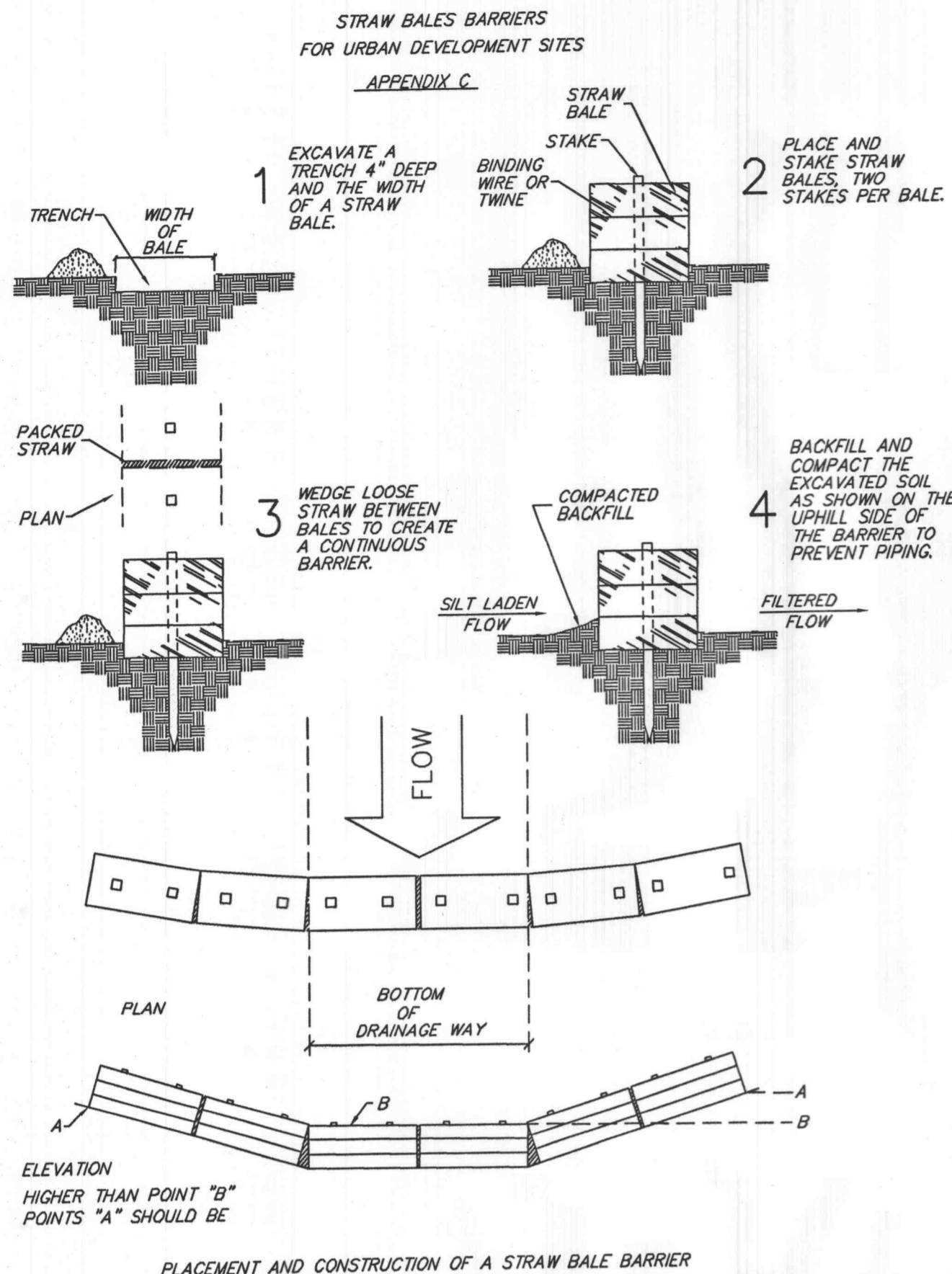


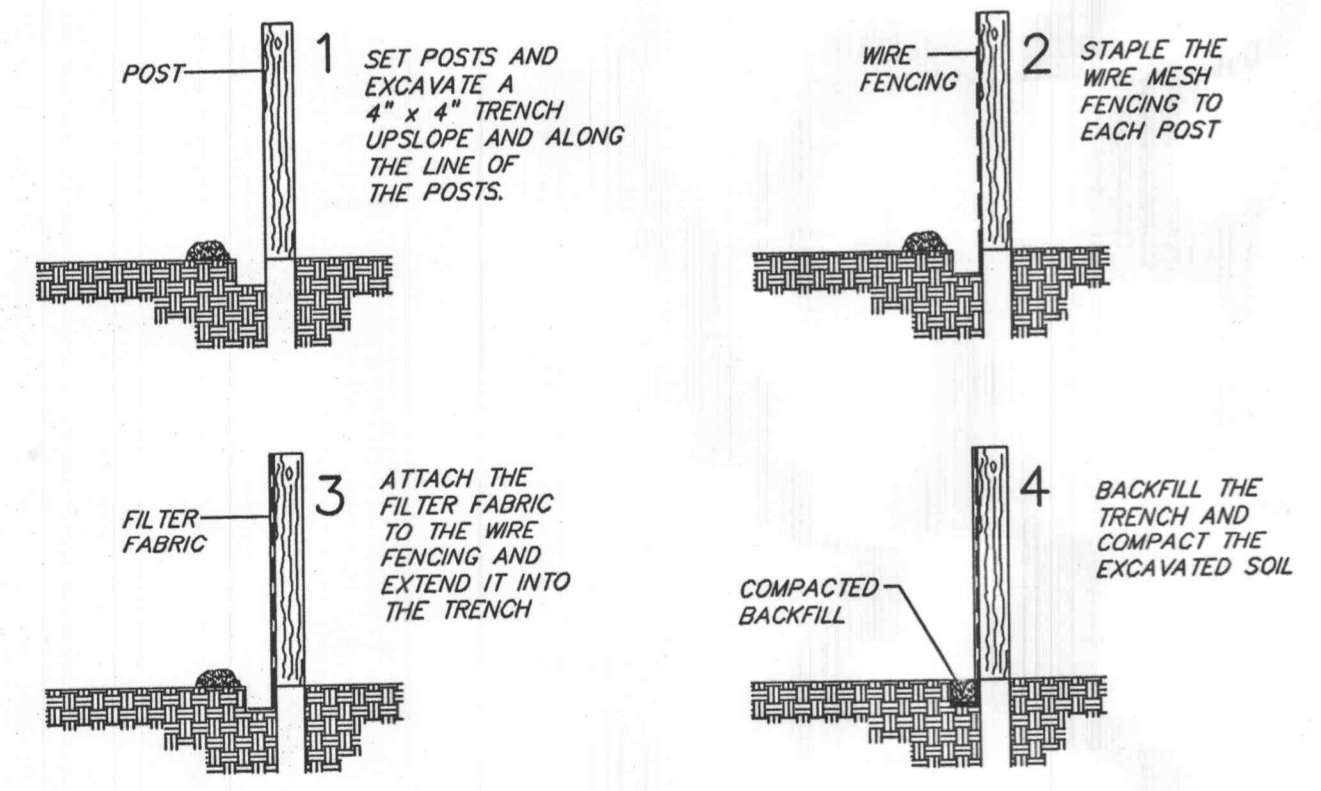
GRAPHIC SCALE



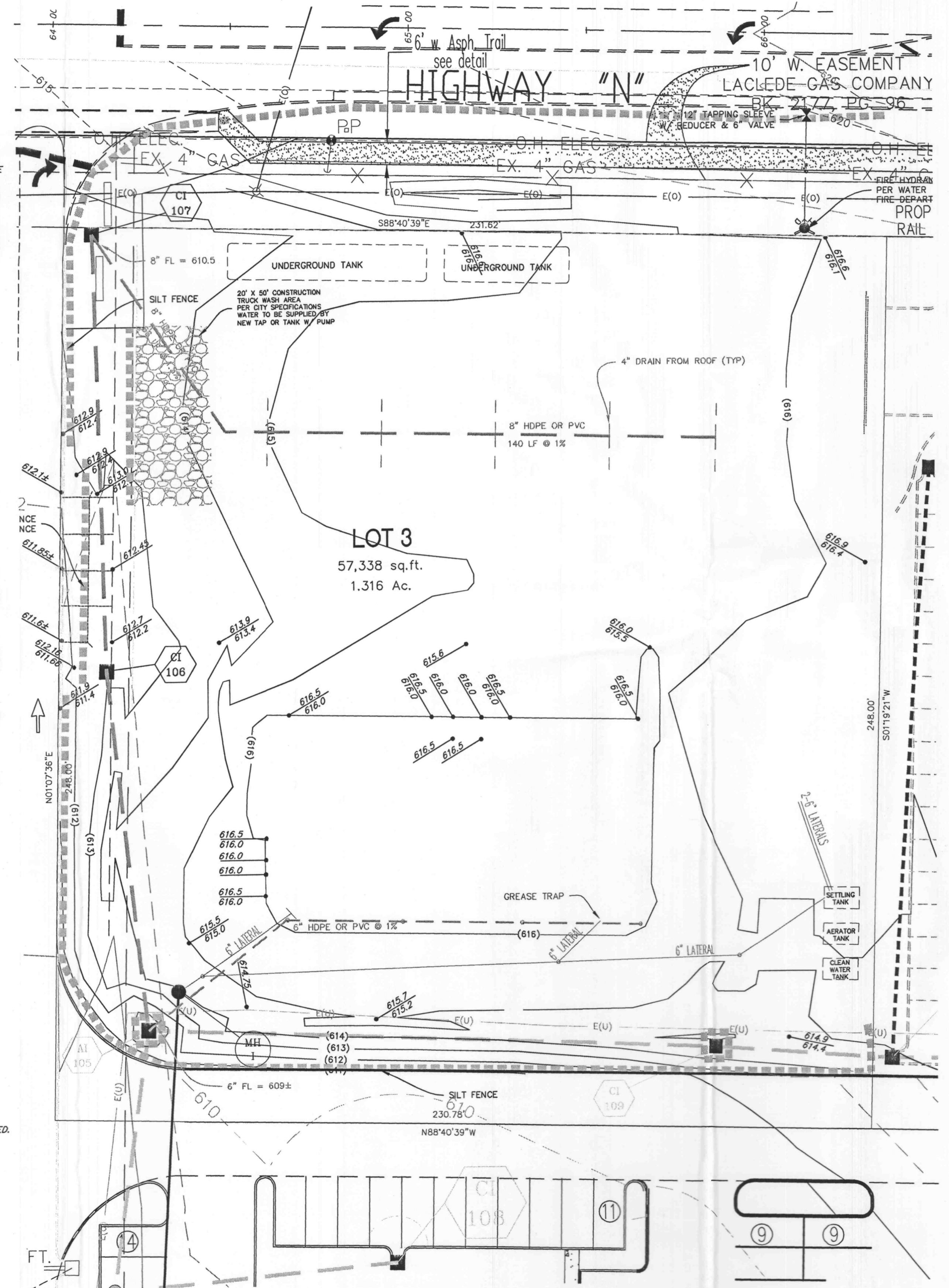
(IN FEET)
1 inch = 20 ft.



All erosion control devices shall meet the St. Charles County Soil and Water Conservation District Erosion and Sediment Control guidelines.
Grading shall operate under the current land disturbance permit issued for the subdivision.



- FILTER BARRIERS SHALL BE INSPECTED IMMEDIATELY AFTER EACH RAINFALL AND AT LEAST DAILY DURING PROLONGED RAINFALL. ANY REQUIRED REPAIRS SHALL BE MADE IMMEDIATELY.
- SHOULD THE FABRIC DECOMPOSE OR BECOME INEFFECTIVE PRIOR TO THE END OF THE EXPECTED USABLE LIFE AND THE BARRIER STILL BE NECESSARY, THE FABRIC SHALL BE REPLACED PROMPTLY.
- SEDIMENT DEPOSITS SHOULD BE REMOVED AFTER EACH STORM EVENT. THEY MUST BE REMOVED WHEN DEPOSITS REACH APPROXIMATELY HALF THE HEIGHT OF THE BARRIER.
- ANY SEDIMENT DEPOSITS REMAINING IN PLACE AFTER THE SILT FENCE OR FILTER BARRIER IS NO LONGER REQUIRED SHALL BE DRESSED TO CONFORM WITH THE EXISTING GRADE, PREPARED AND SEDED.



A (TO CI 107)	(.26 AC)(3.85) = 1.00 CFS
OFF-SITE (TO CI 107)	(.5 AC)(3.85) = 1.93 CFS
B (FROM CANOPY)	(.17 AC)(3.85) = 0.66 CFS
C (TO CI 106)	(.33 AC)(3.85) = 1.27 CFS
D (FROM BUILDING)	(.11 AC)(3.85) = 0.44 CFS
E (TO AI 105)	(.07 AC)(3.85) = 0.27 CFS
F (TO CI 109)	(.18 AC)(3.85) = 0.69 CFS

