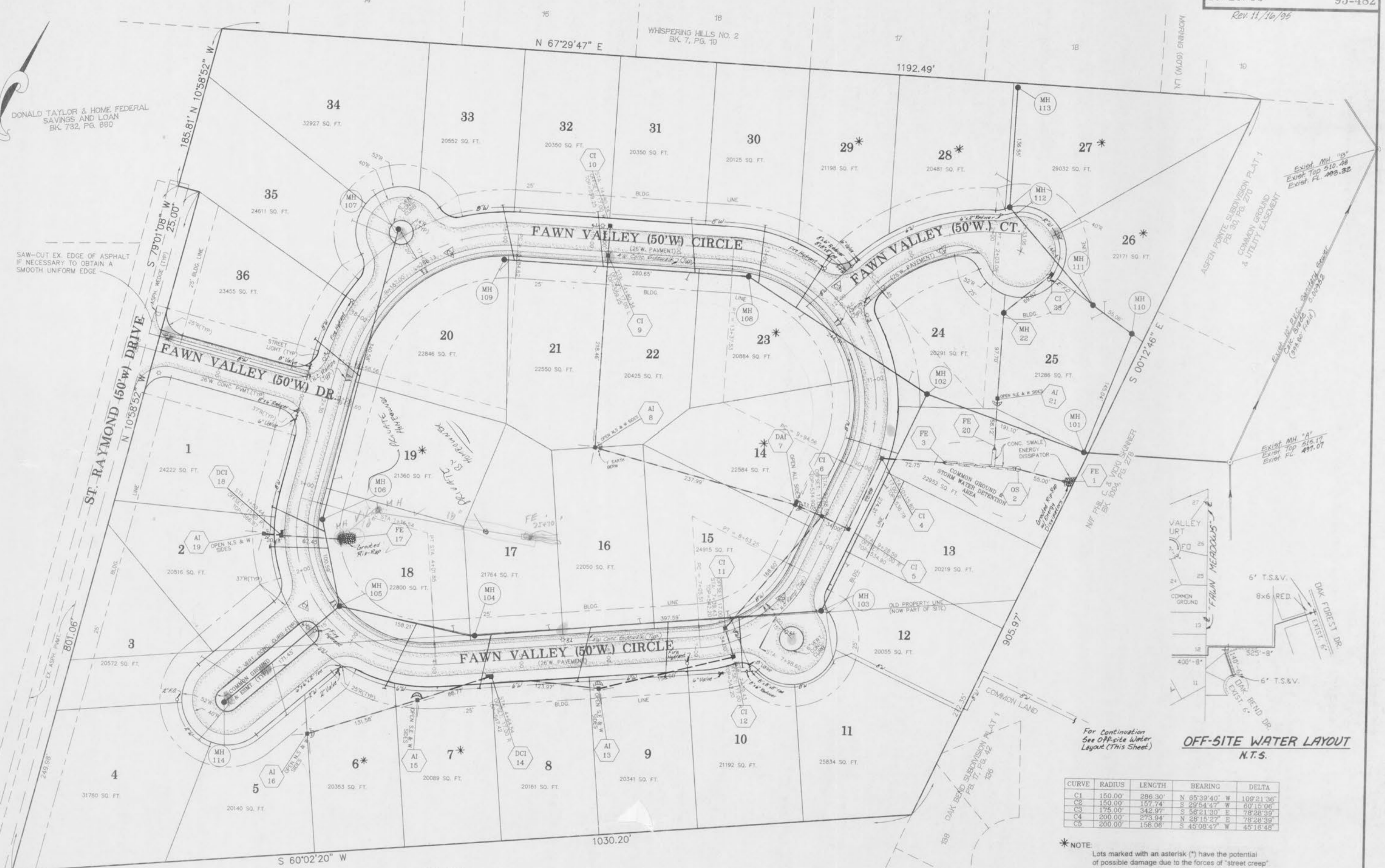


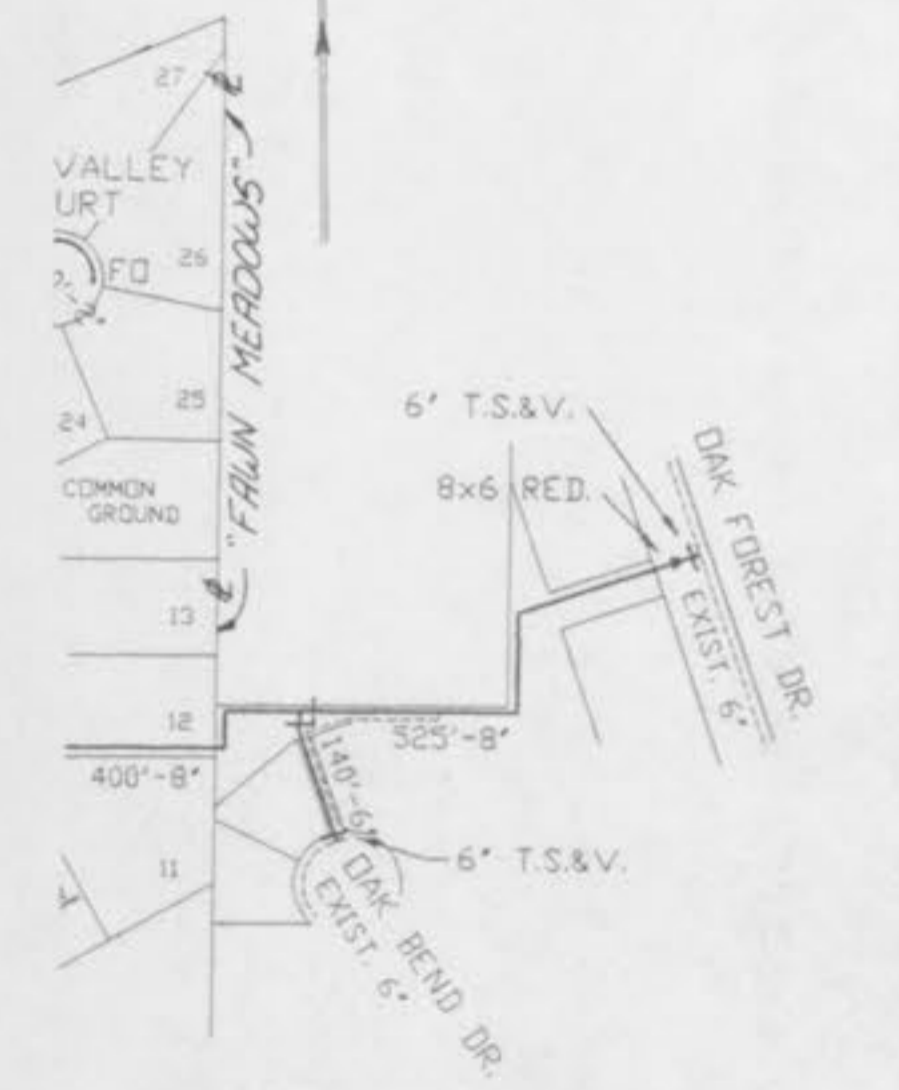
DONALD TAYLOR & HOME FEDERAL SAVINGS AND LOAN BK. 732, PG. 860

SAW-CUT EX. EDGE OF ASPHALT IF NECESSARY TO OBTAIN A SMOOTH UNIFORM EDGE



ASPEN POINTE SUBDIVISION PLAT 1  
 COMMON GROUND & UTILITY EASEMENT

EXHIBIT MH "A" 497.07  
 EXHIBIT TOP 515.12  
 EXHIBIT FL 498.32



For Continuation See Off-site Water Layout (This Sheet)

OFF-SITE WATER LAYOUT  
 N.T.S.

CURVE	RADIUS	LENGTH	BEARING	DELTA
C1	150.00	286.30	N 65°39'40" W	109°21'36"
C2	150.00	157.74	S 29°54'47" W	60°15'06"
C3	175.00	342.97	S 56°21'30" E	78°28'39"
C4	200.00	273.94	N 28°15'27" E	78°28'39"
C5	200.00	158.06	S 45°08'47" W	45°16'48"

\*NOTE: Lots marked with an asterisk (\*) have the potential of possible damage due to the forces of "street creep". Precautionary measures (such as special expansion joints, construction methods, etc.) should be considered when constructing driveways and connection to pavement to prevent "street creep" damage.