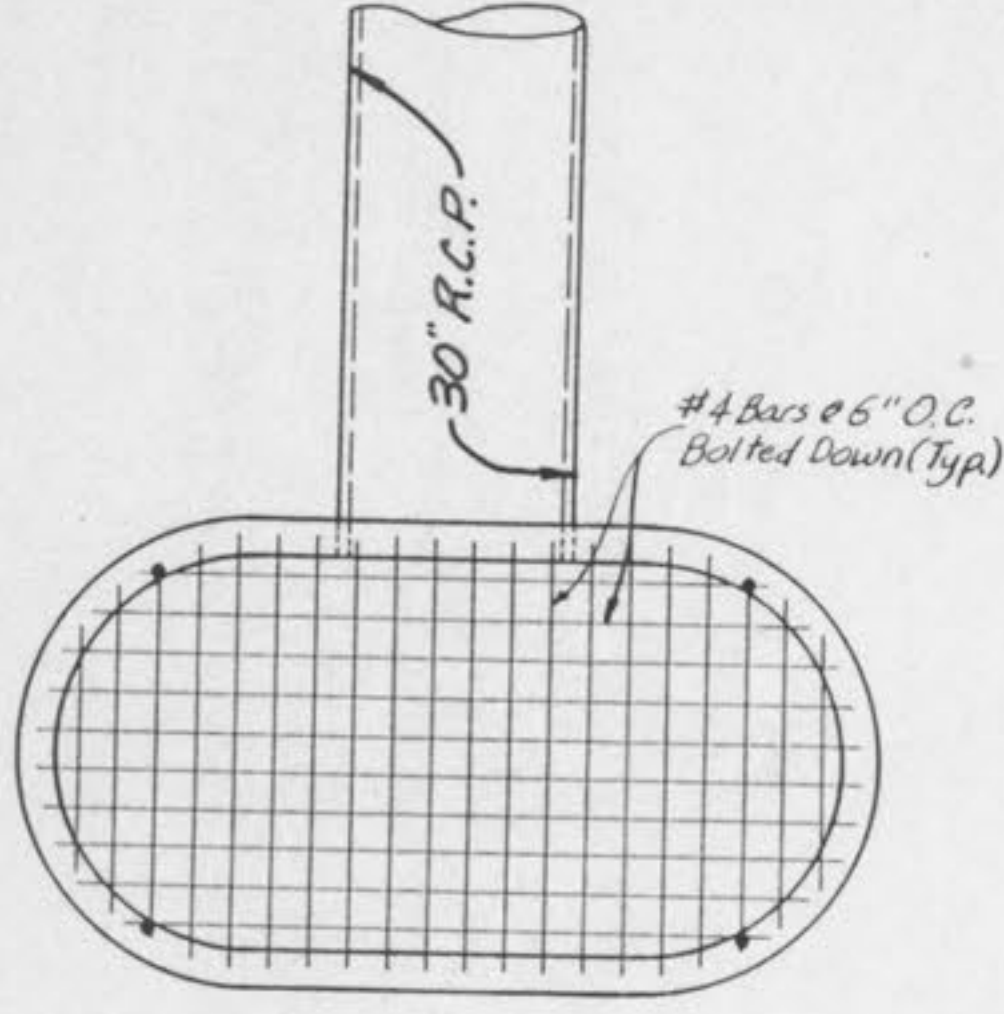
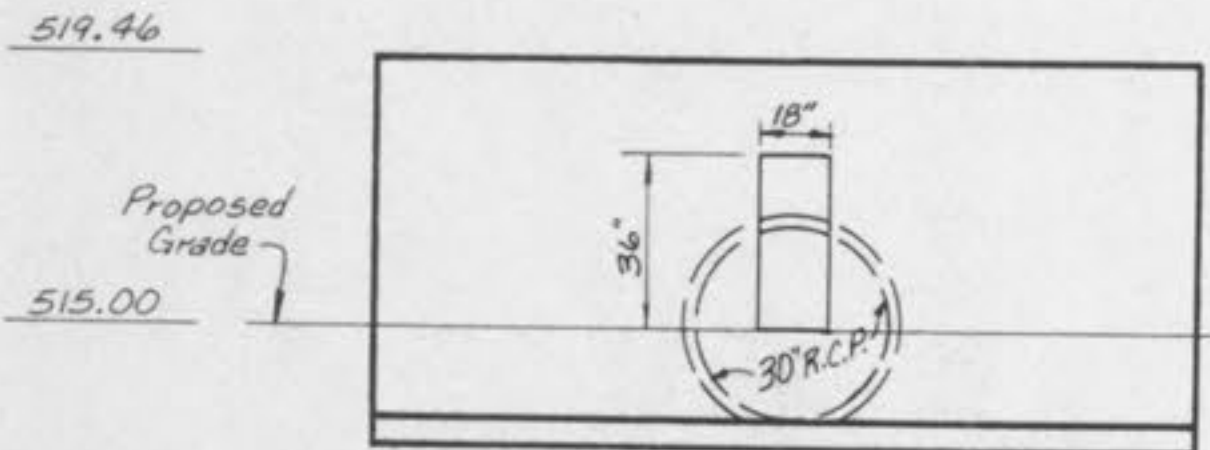


SCALES: HOR. 1"=50'  
VERT. 1"=10'



TOP VIEW  
N.T.S.



**OVERFLOW STRUCTURE 2**  
N.T.S.

Note: The Overflow Structure is to be a Standard Double Untrapped Street Inlet Precast Concrete (Without Top). See M.S.D. Detail 35. The bottom must be constructed to the correct height so that no brick will be used. A rectangular orifice 18"W x 36"H, with a flowline of 515.00 will be used. (See Detention Calcs.) (See Detail This Sheet).

