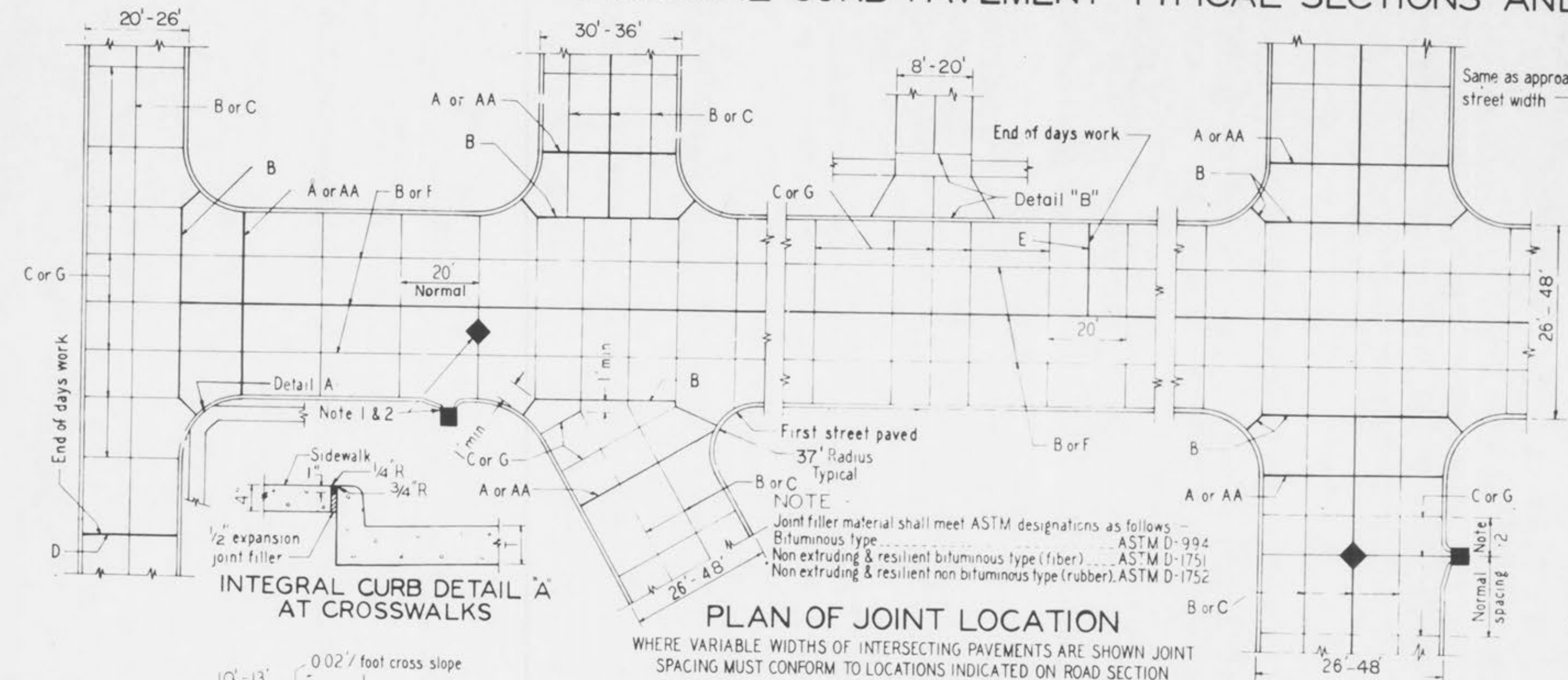
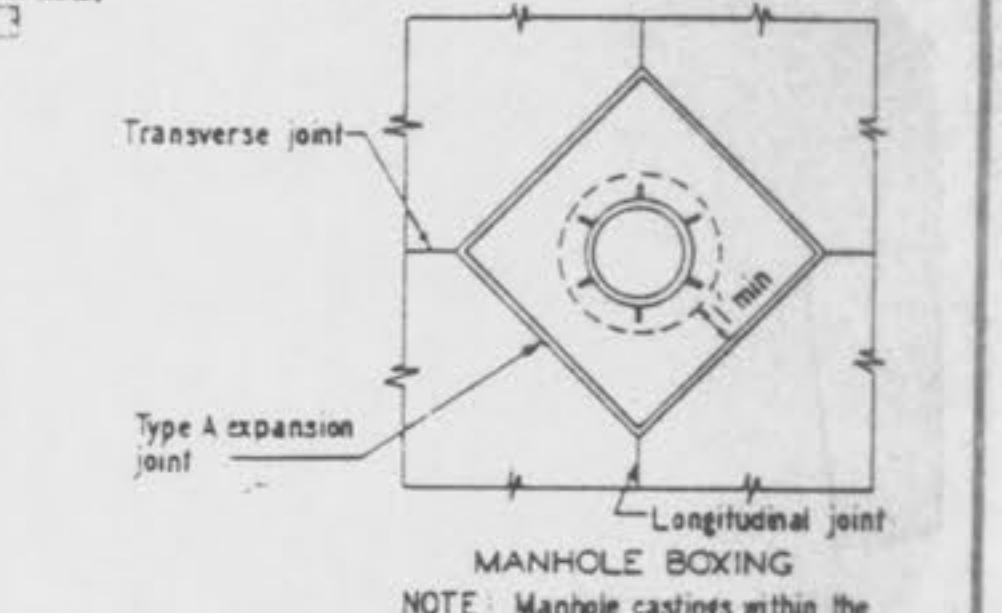
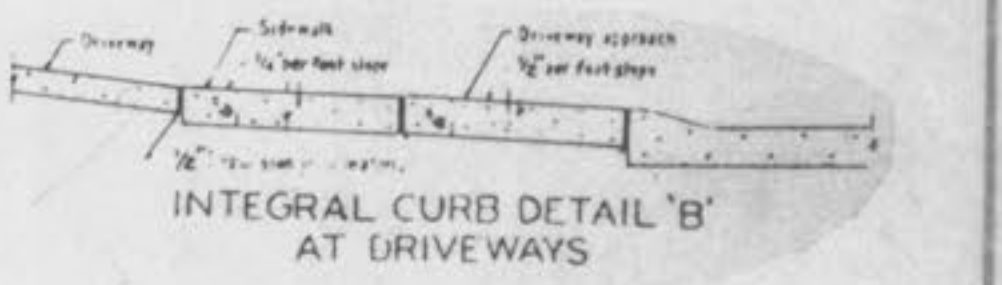
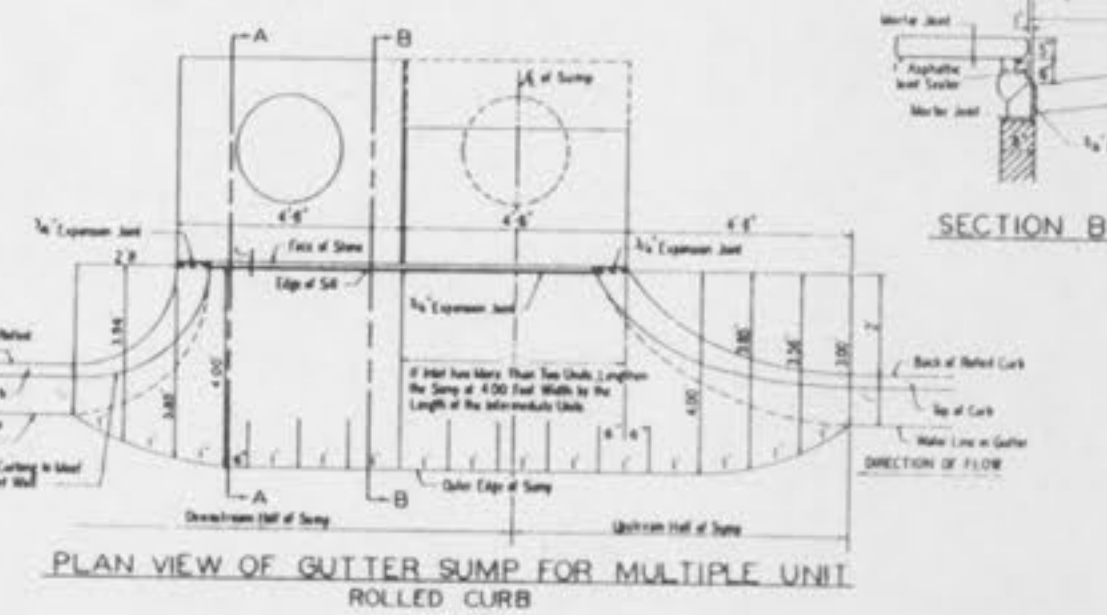
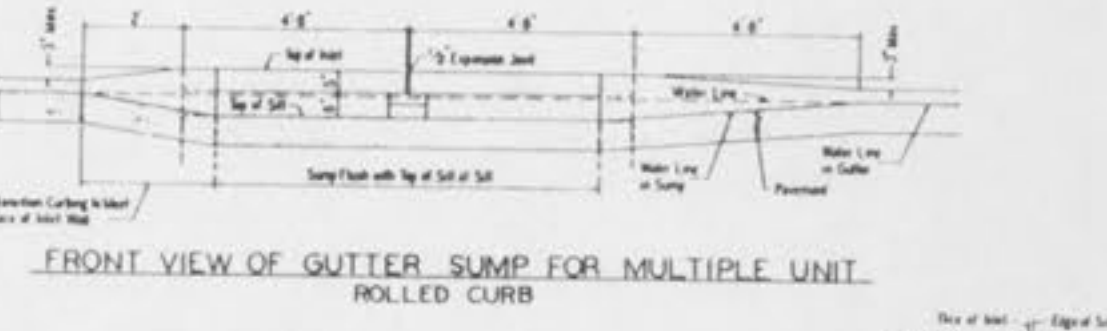
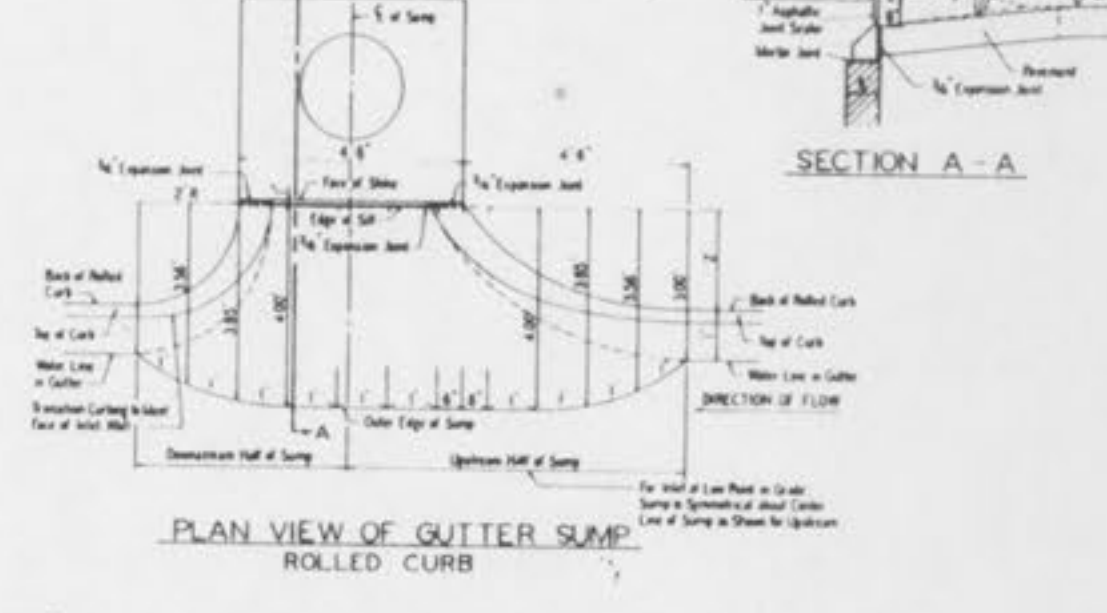
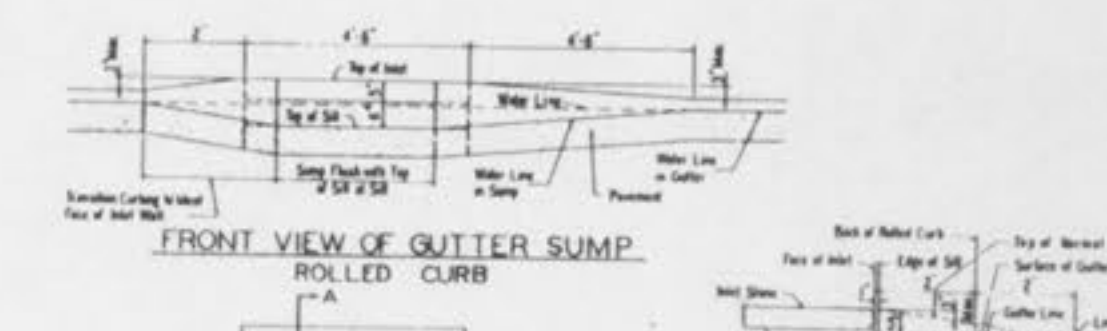
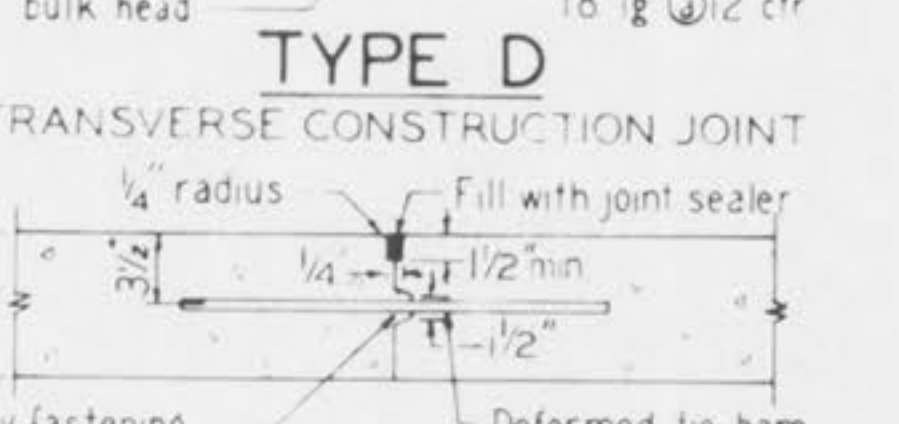
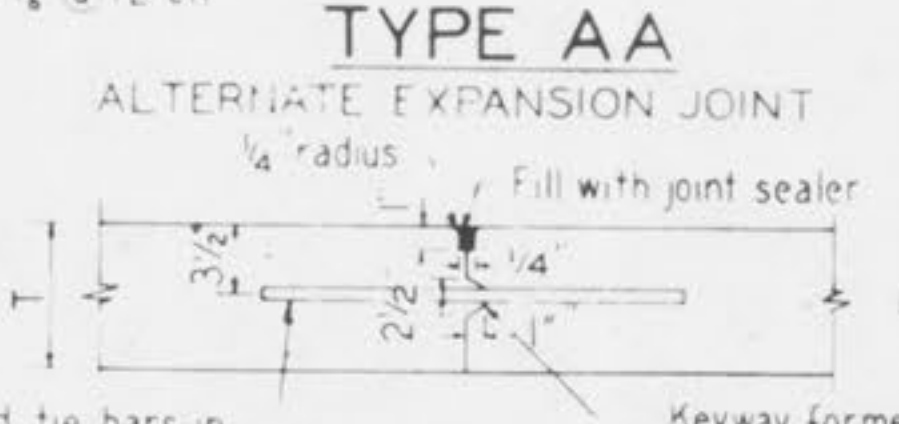
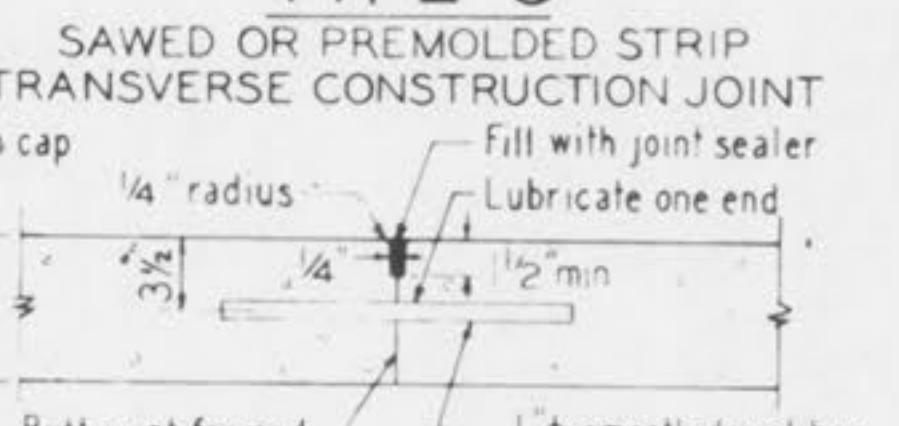
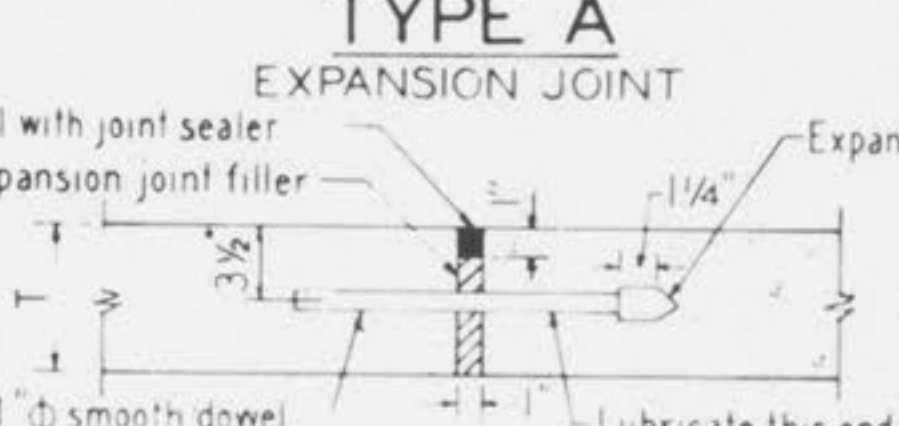
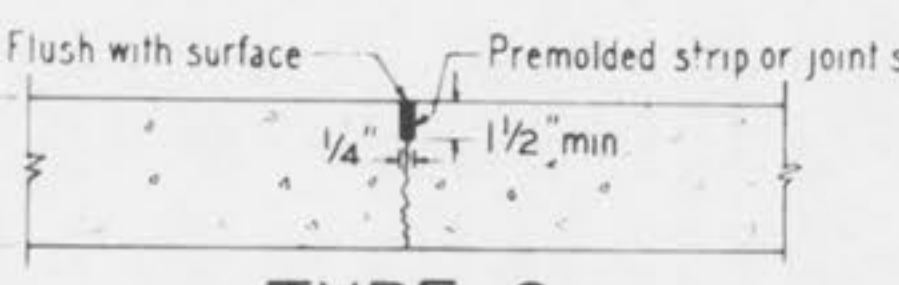
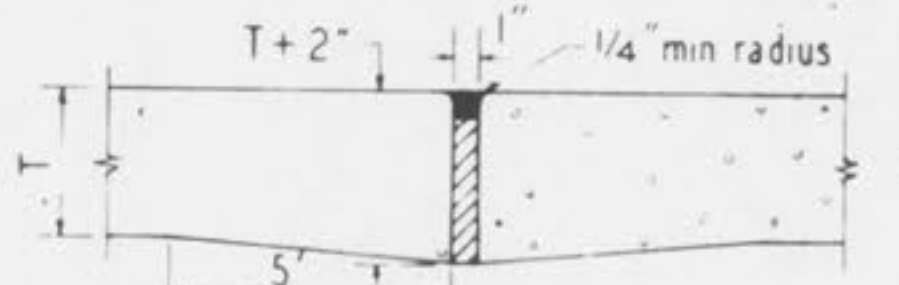
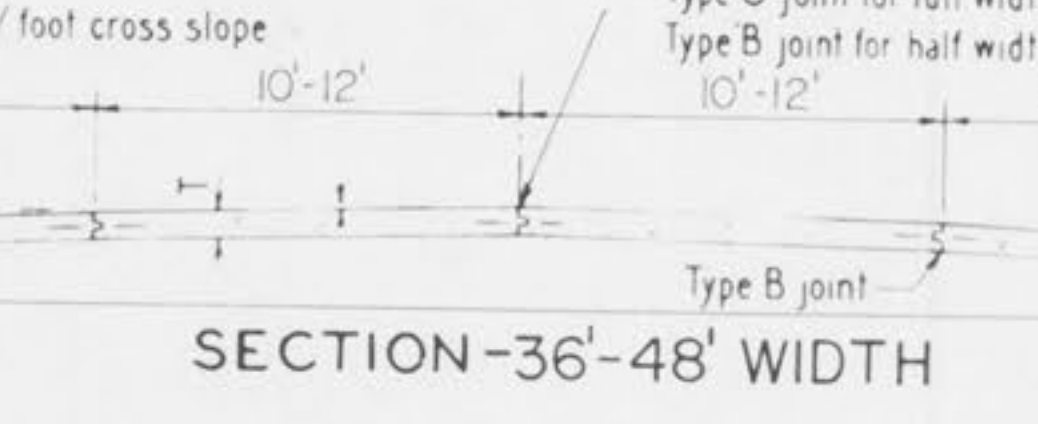
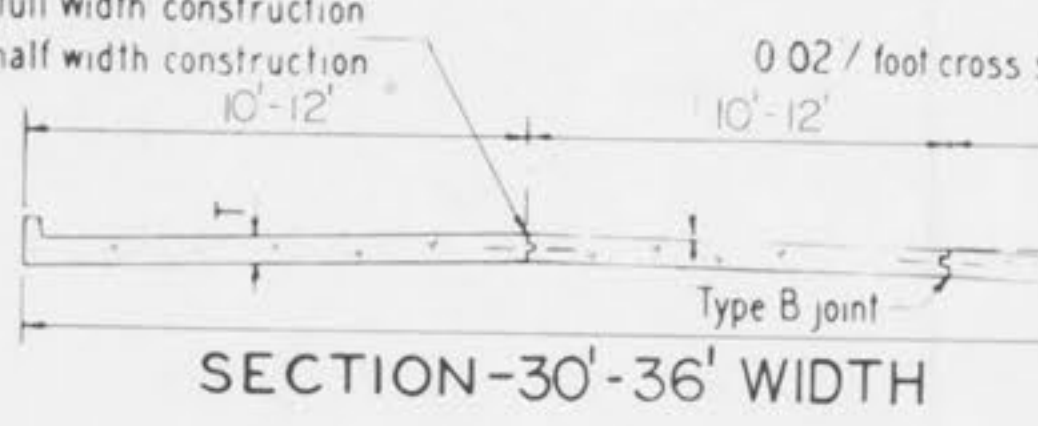
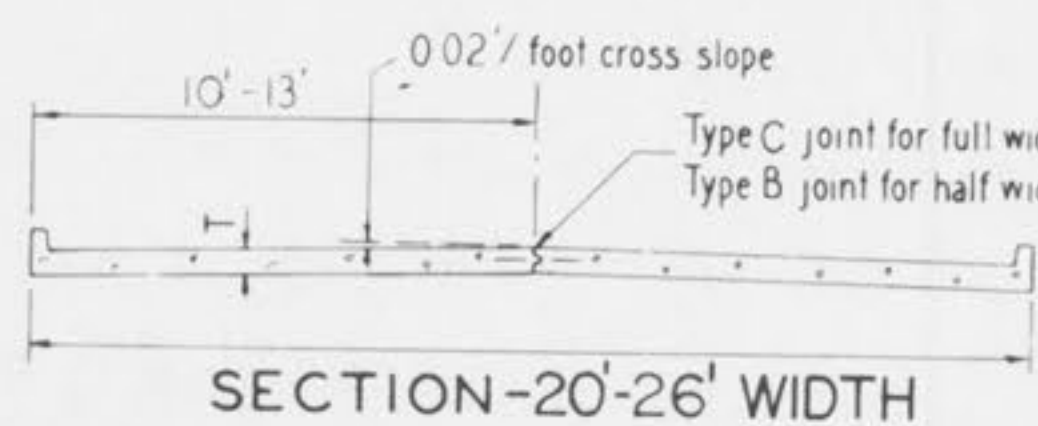
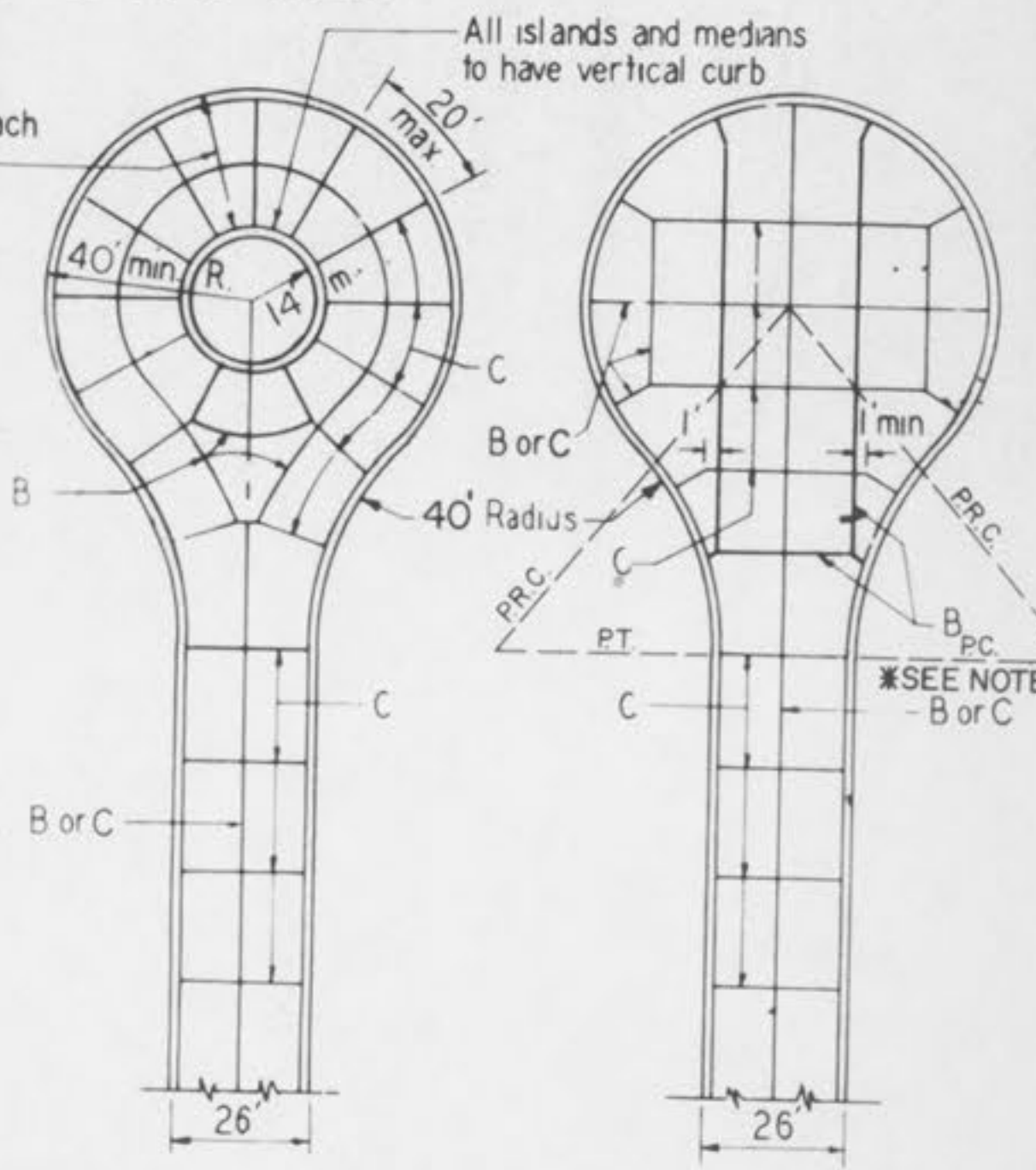
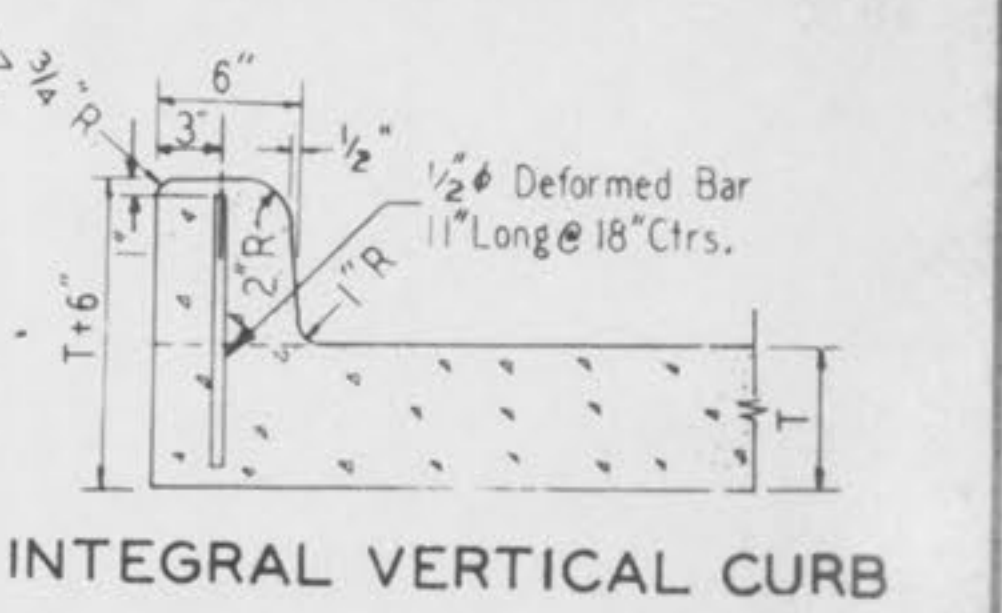
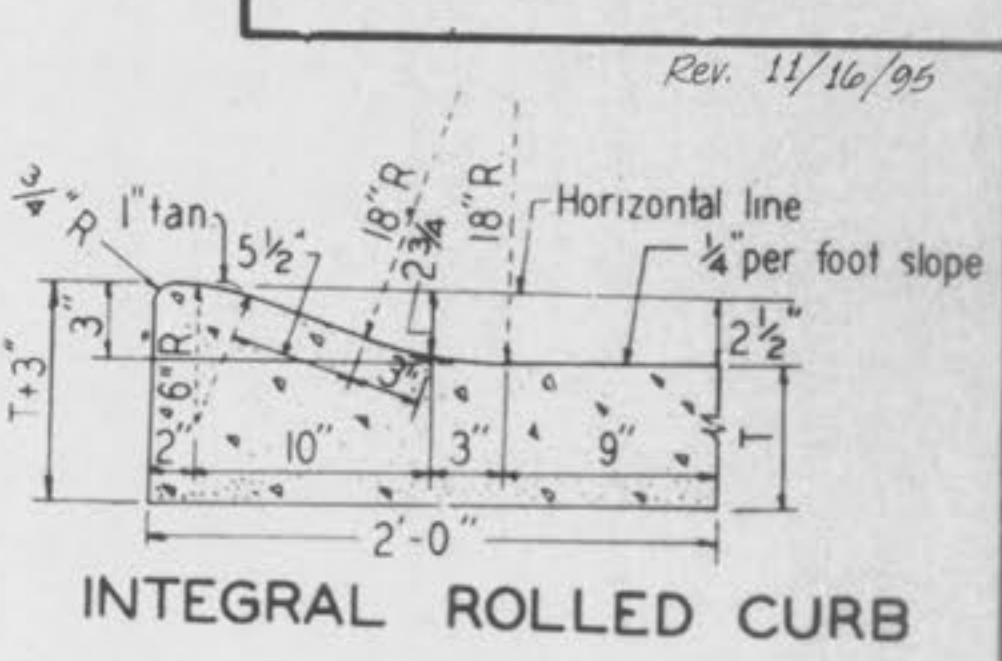


INTEGRAL CURB PAVEMENT TYPICAL SECTIONS AND DETAILS

FAWN MEADOWS
CONSTRUCTION DETAILS
Rev. 11/16/95



INTEGRAL CURB DETAIL 'A' AT CROSSWALKS



- General Notes:
- All catch basins shall be separated from the pavement and curb by expansion joint material extending completely through curb and slab. Manhole castings within the pavement limits shall be boxed as shown in the "Sewer Construction Details".
 - When a joint falls within 5 ft. of or contacts basins, manholes, or other structures, shorten one or more panels either side of opening to permit joint to fall on road structures and at or between corners of rectangular structures.
 - Driveway configurations are shown in the "Entrance Construction Details".
 - Construction joint and dowel bars may be omitted when curb is poured integral with pavement.

- Minimum Thickness for Pavement is:

| CONCRETE (T) | Local or Minor Streets | Major or Industrial Streets | Arterial or Industrial Streets |
|--------------|------------------------|-----------------------------|--------------------------------|
| 6" | | | |
| 7" | | | |
| 8" | | | |

 Base material under 7" or 8" Concrete Pavement will be made with 4" Type 1 Aggregate Sub-Base.
- For minor Rural or Urban and Minor Subdivision pavements (6" thick concrete), 5/8" ϕ deformed tie bars lg. @ 30" ctr. shall be used for TYPE B longitudinal joints.
- Refer to Exhibit 13A for joint and bar requirements for different street classifications. Note that width and location of each poured portion of the pavement may change the type and location of joint required.
- Transverse or longitudinal construction joints in slip formed pavement may be made with groover of tool, if such device has been approved in advance by the St. Charles County Highway Department.

BOD 21 3 6 7 3

NEW REVISIONS 1-76 3-73