

REVISIONS

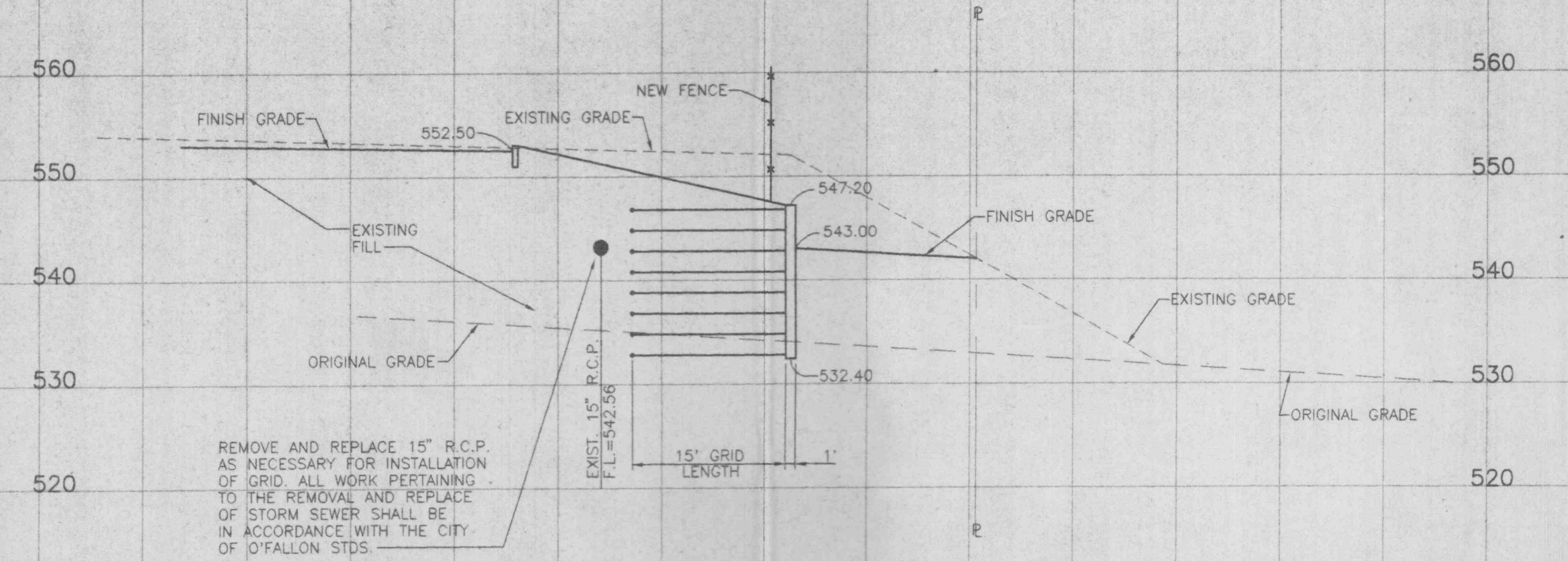
NO.	DATE	DESCRIPTIONS

FAZOLI'S RESTAURANT
MO. STATE HWY. "K"
O'FALLON, MISSOURI

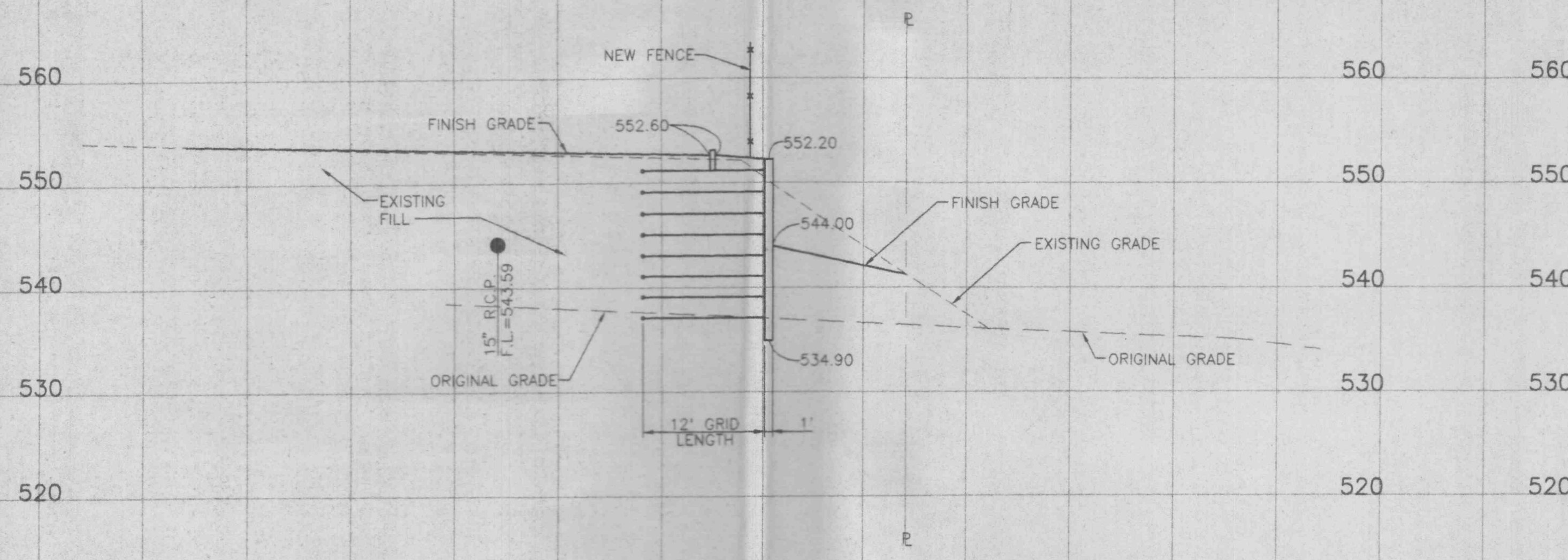
Farnsworth Polk, Inc.
engineers & surveyors
144 W. Lockwood Ave.
St. Louis, MO 63119
Phone (314)982-7900
Fax (314)982-1253

TITLE:
RETAINING WALL ELEVATION AND SECTIONS
DATE: 5-12-95
PROJECT NO.: 94189

SHEET:
C-5



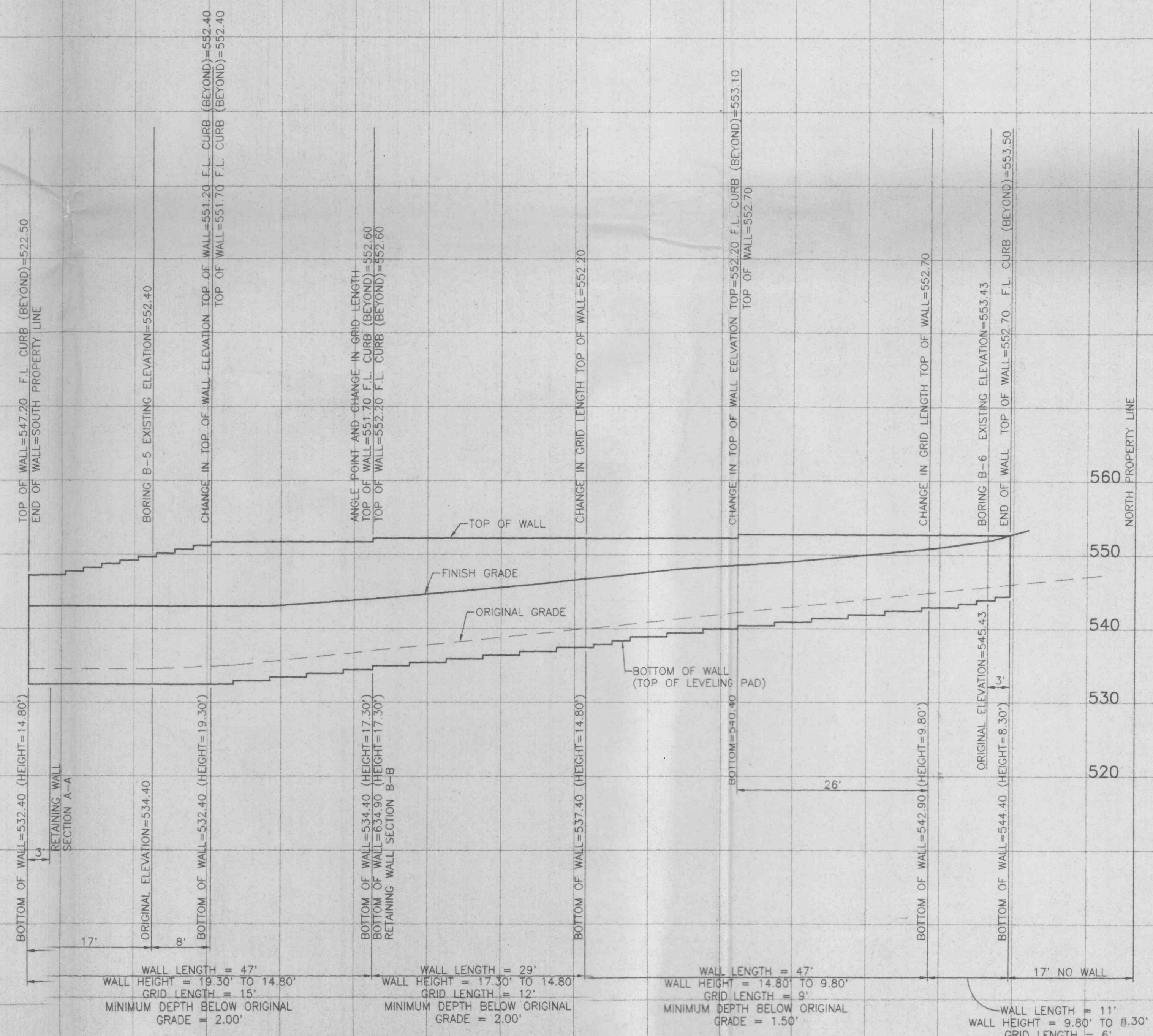
RETAINING WALL SECTION A-A
(PERPENDICULAR TO EAST P)



RETAINING WALL SECTION B-B
(PERPENDICULAR TO EAST P)

NOTE: REFER TO SHEET C-7
FOR RETAINING WALL SPECIFICATIONS

SCALE:
HORIZ. 1"=10'
VERT. 1"=10'



RETAINING WALL ELEVATION