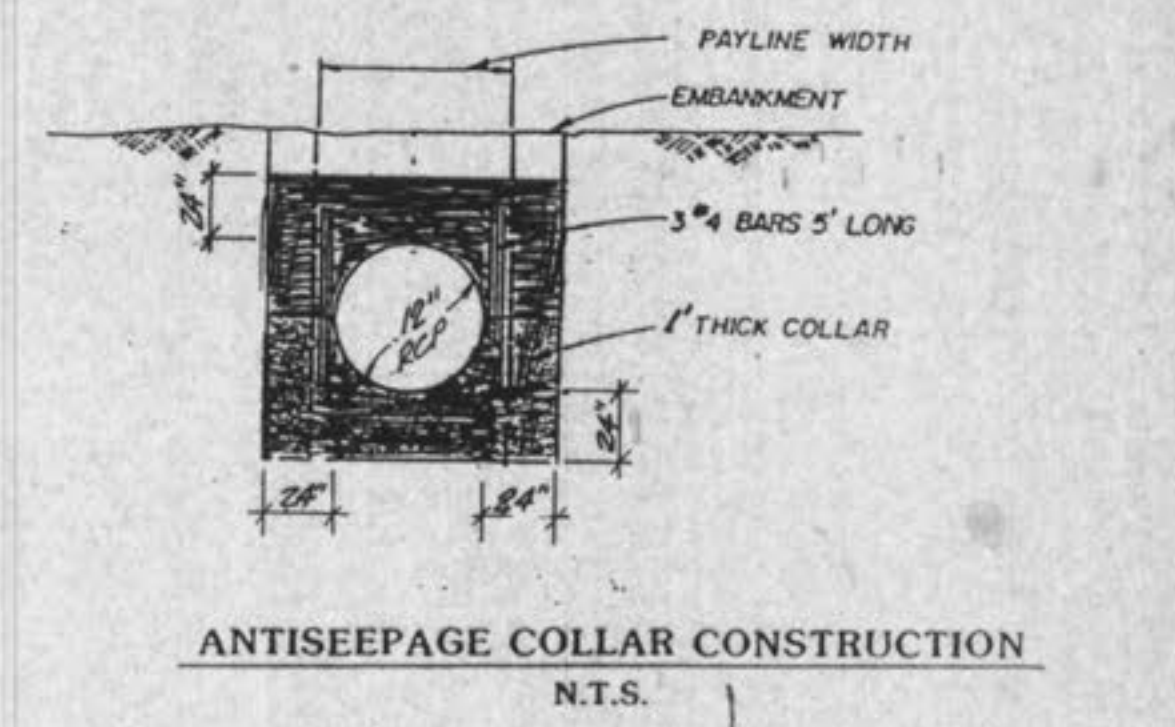
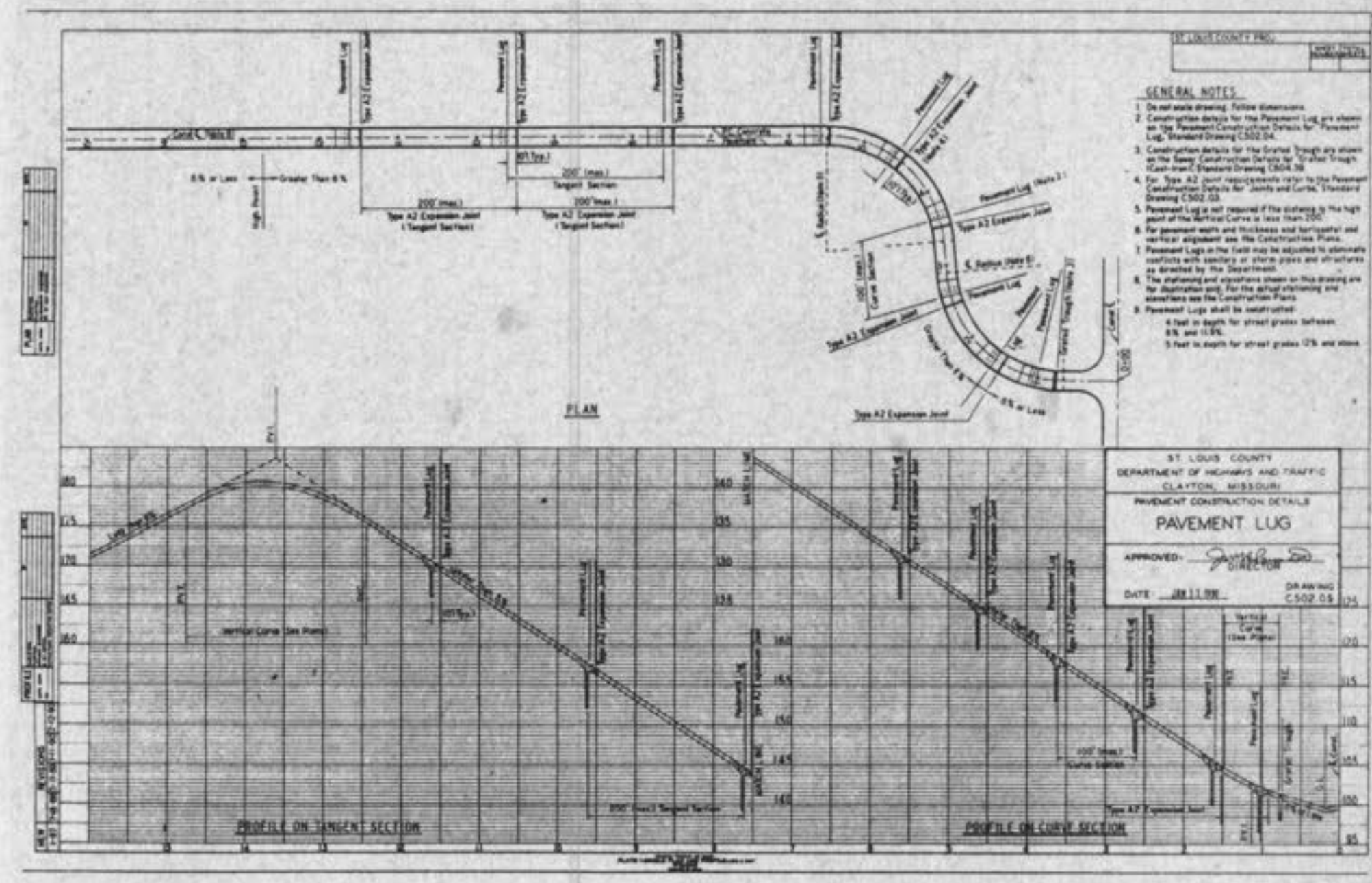
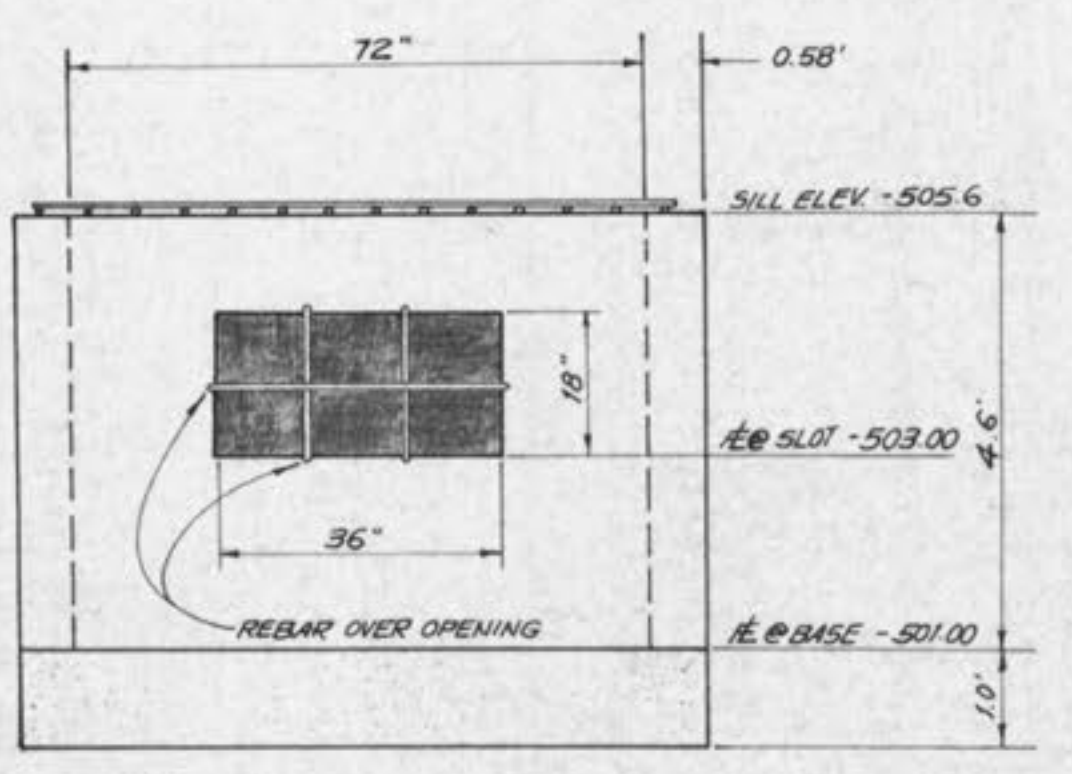
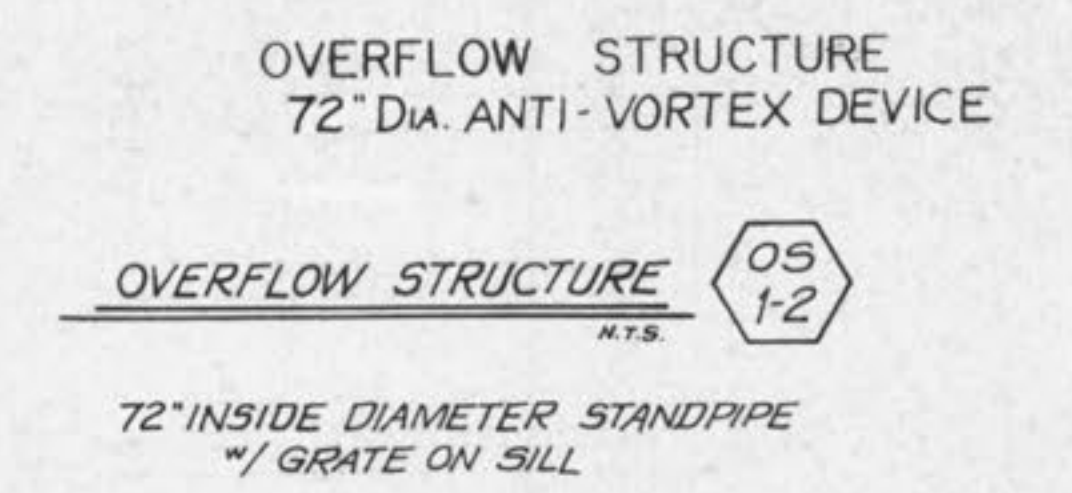
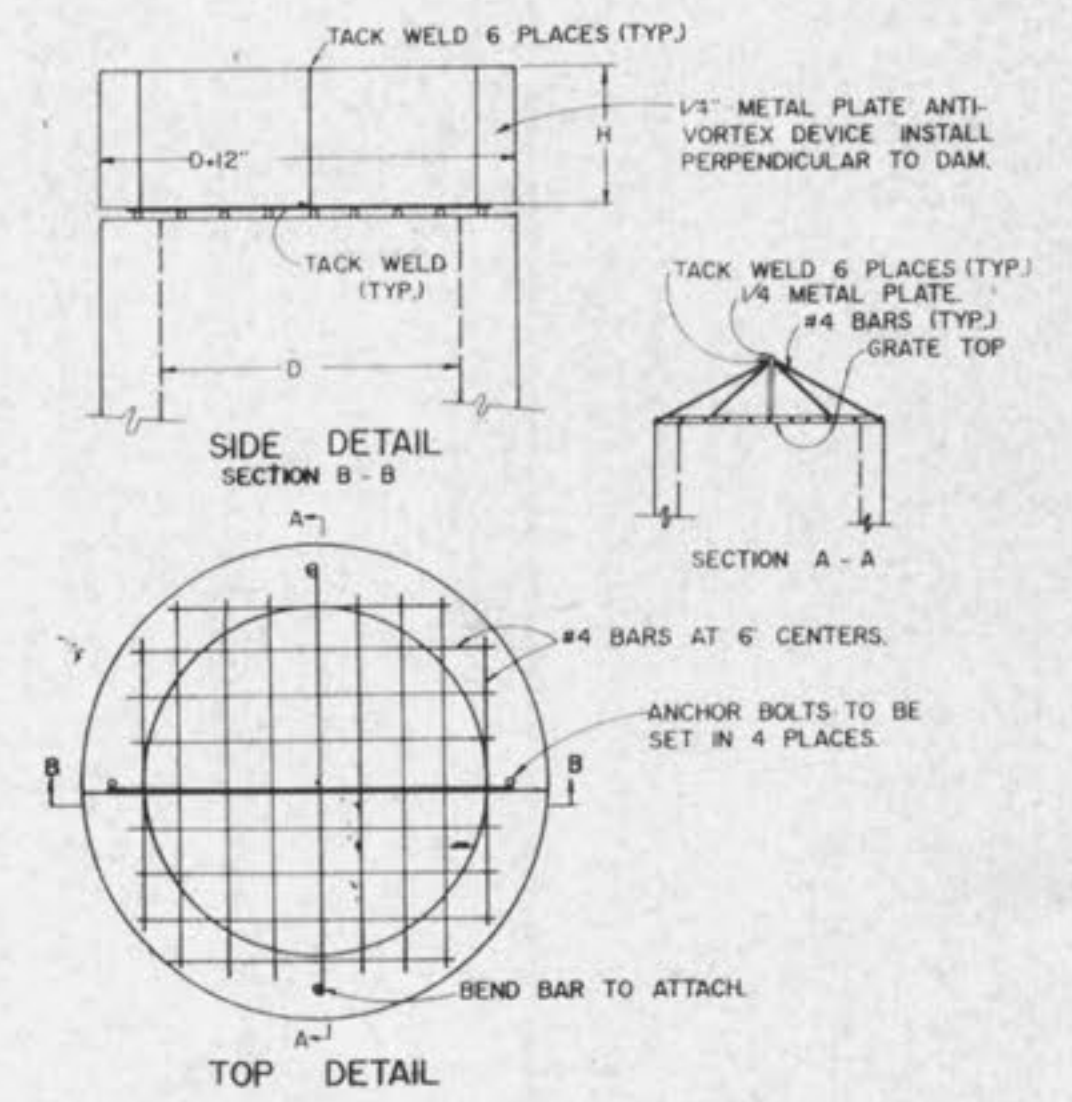
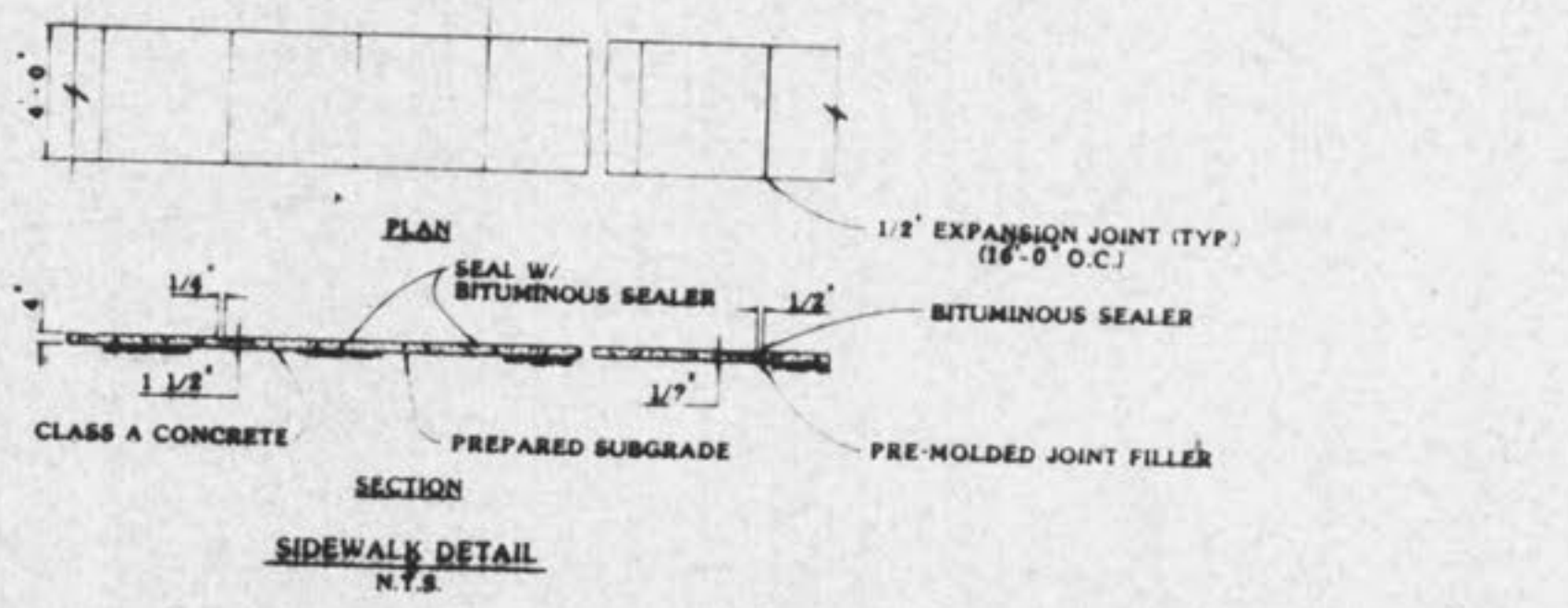
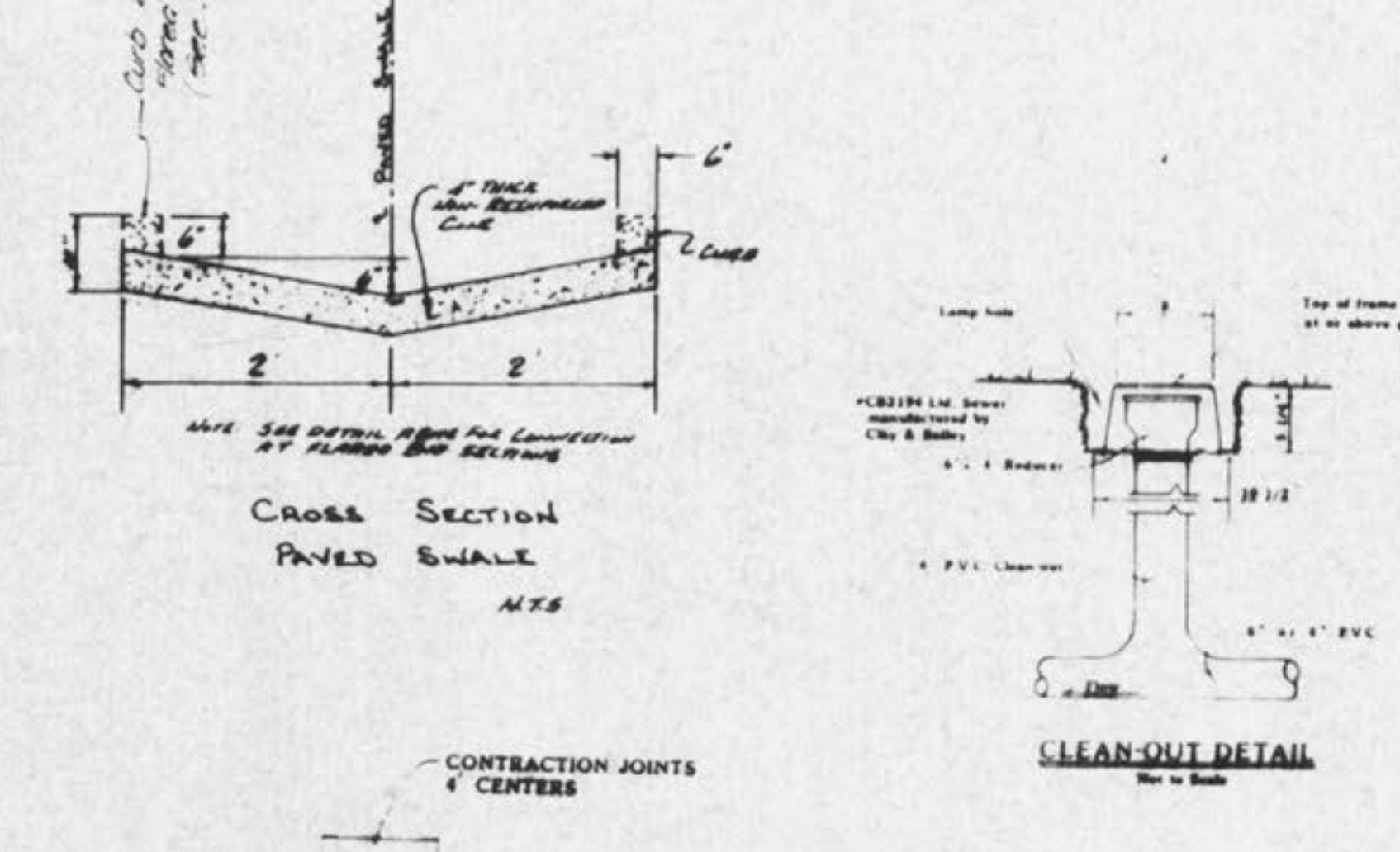
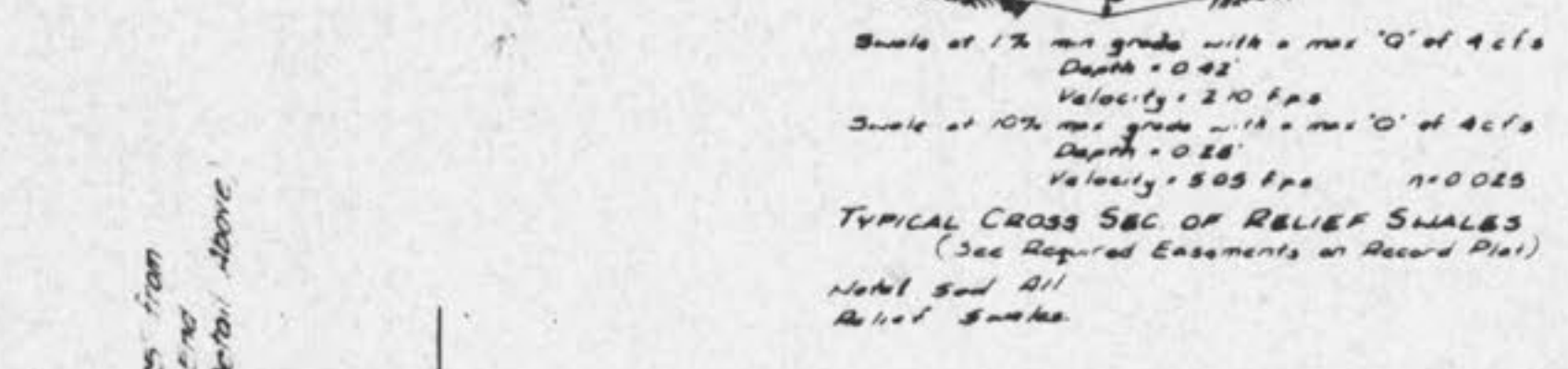
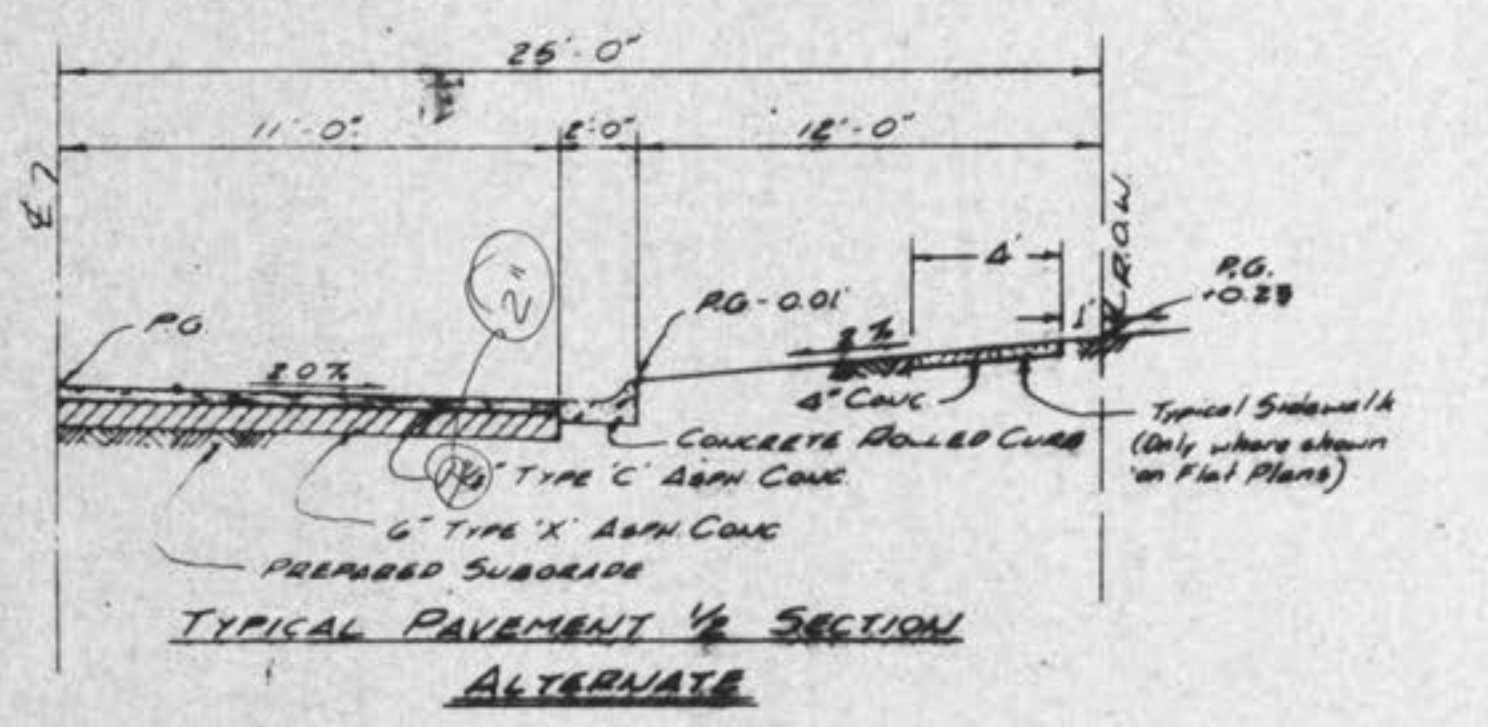
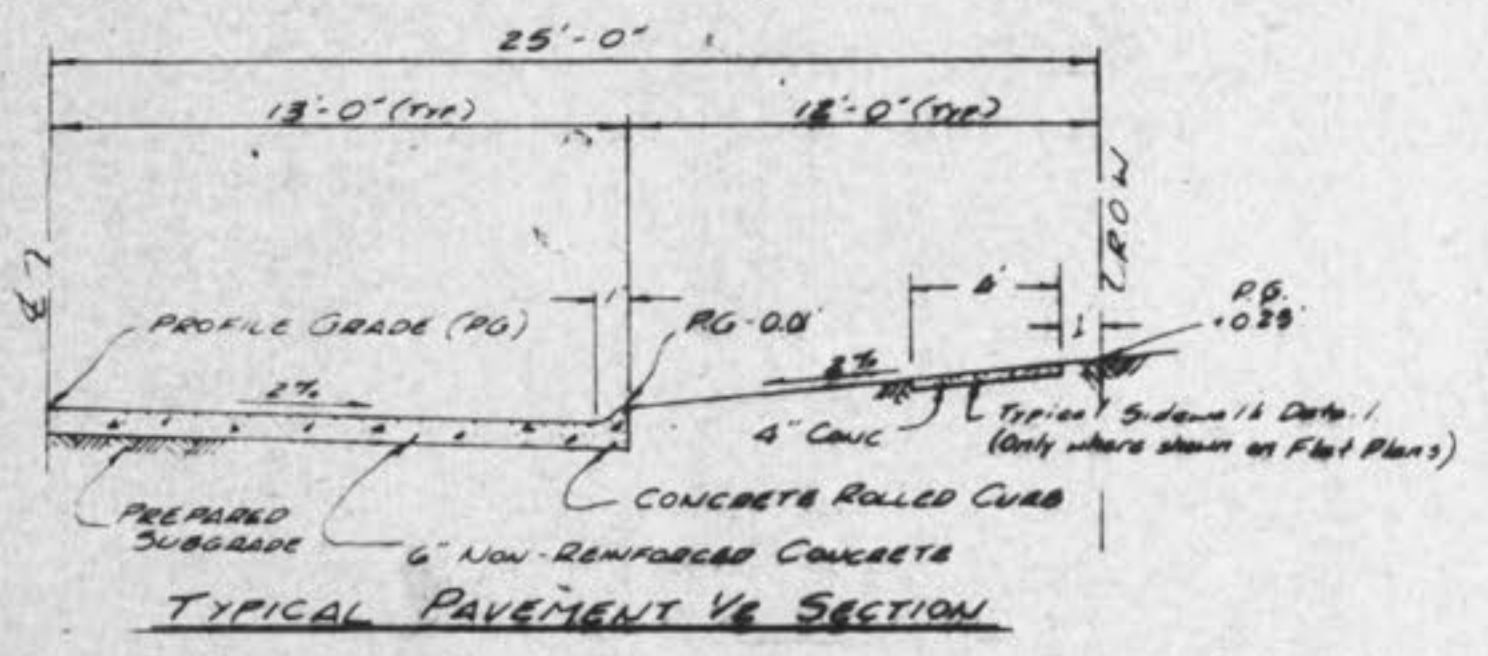
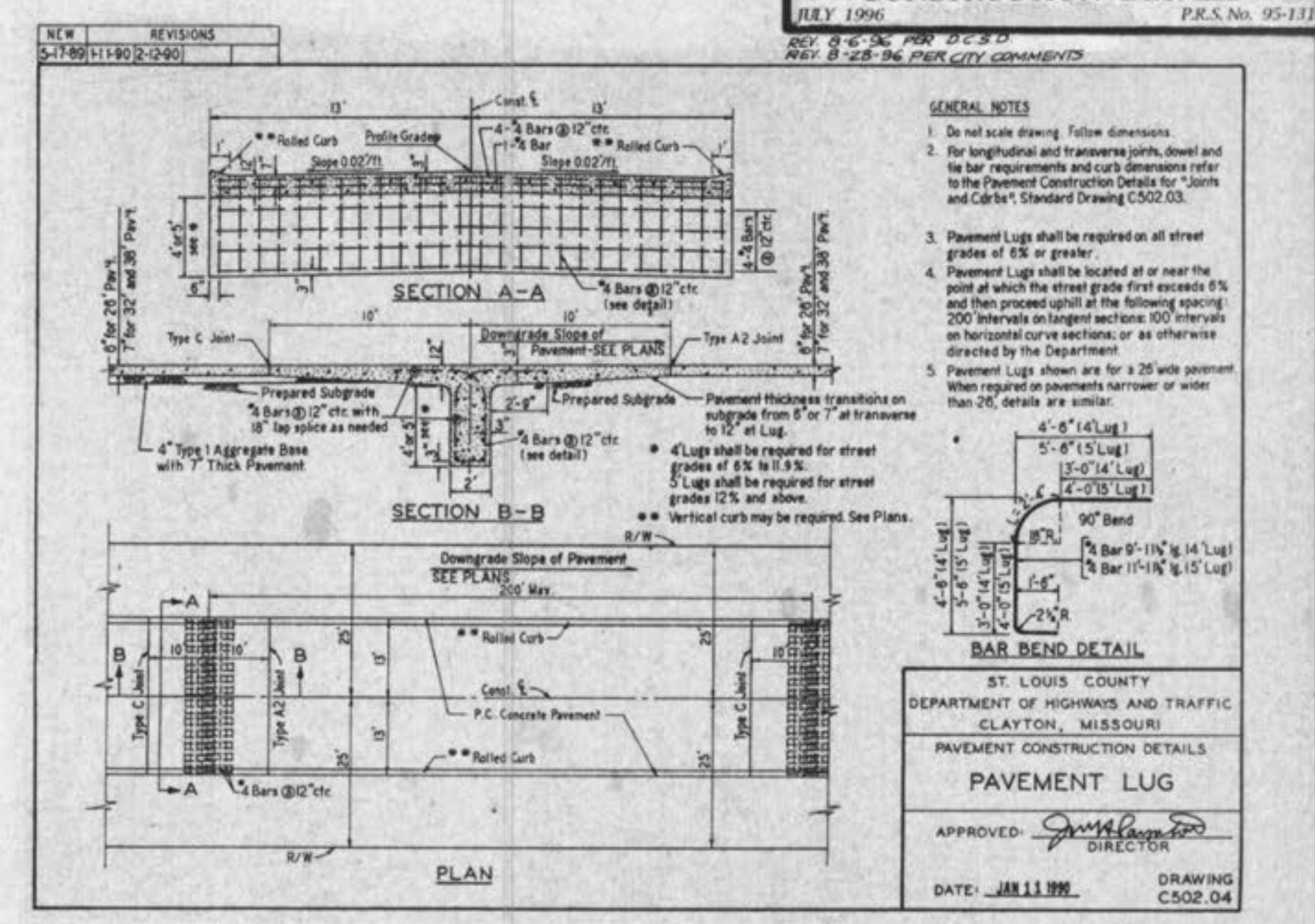
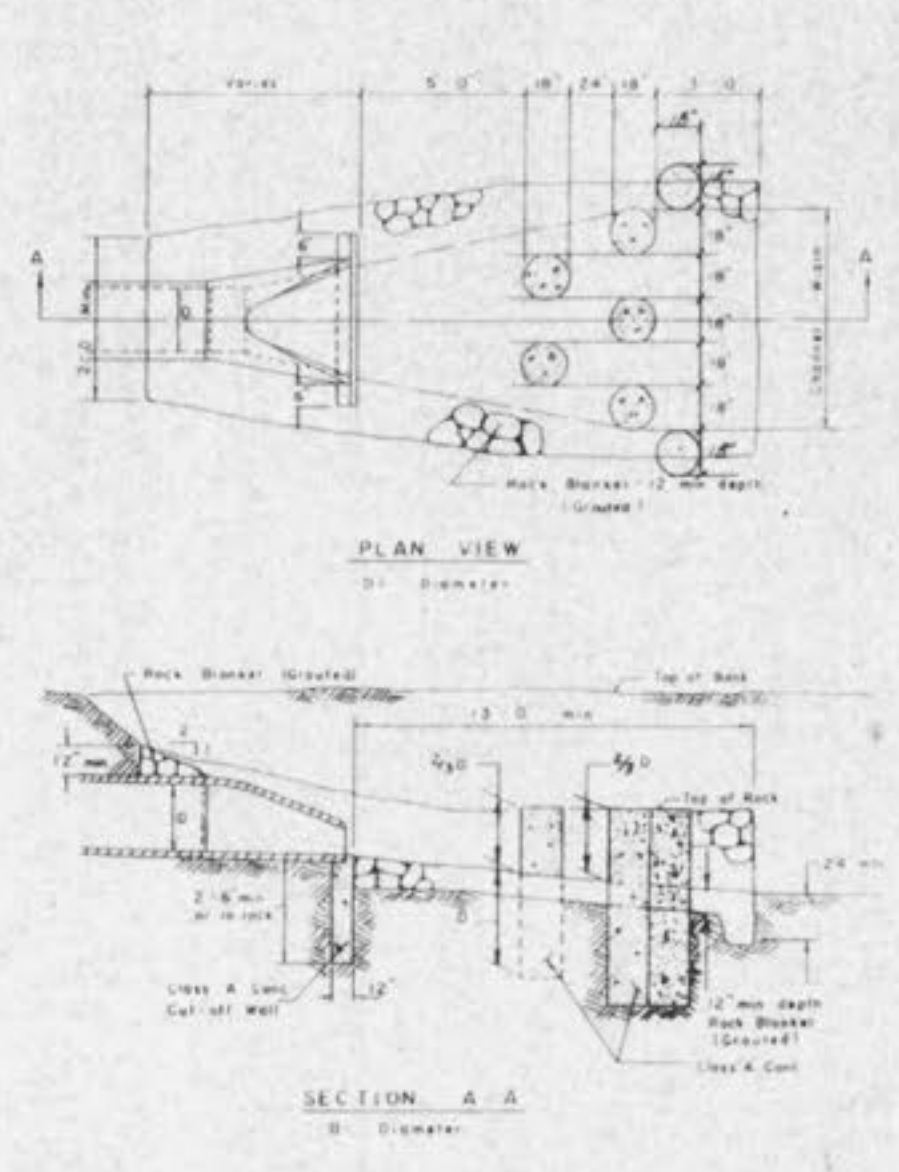
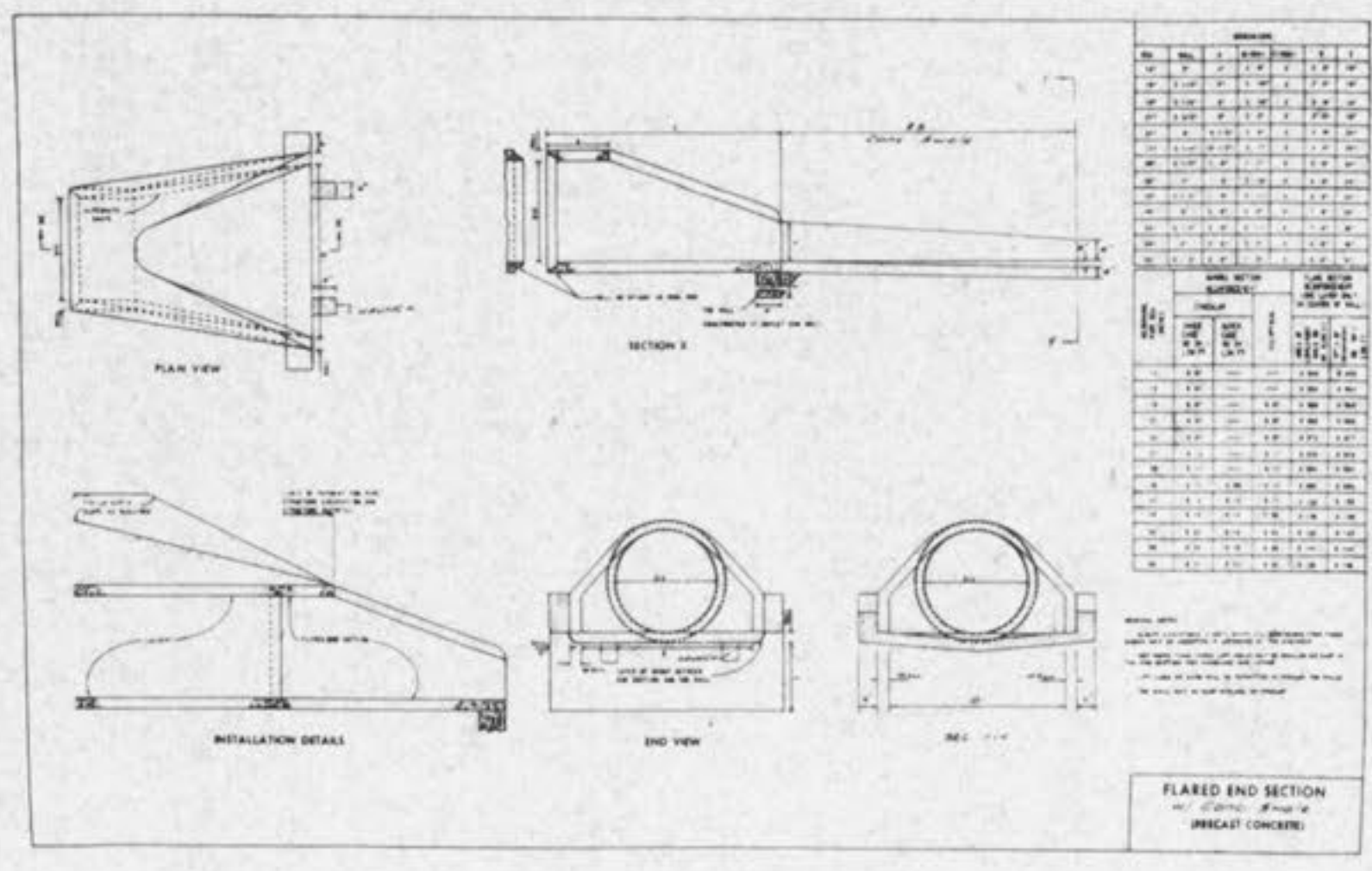
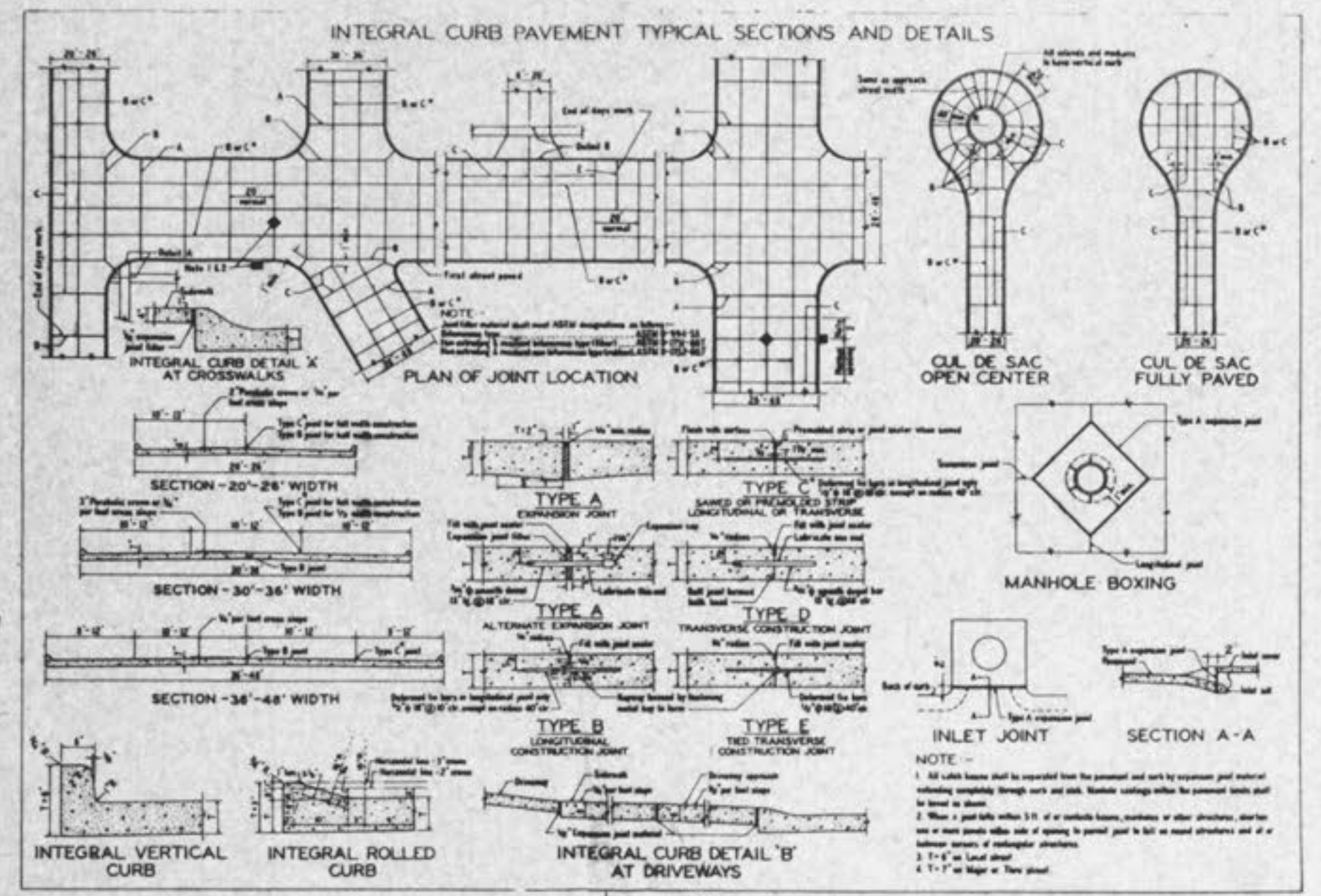


JULY 1996
REV. 0-6-96 PER D.C.S.D.
REV. 8-28-96 PER CITY COMMENTS
P.R.S. No. 95-133



NOTE: Trench shall be backfilled in this life with clay soil approved by geotechnical engineer or an approved soil mixed with 5% bentonite clay by weight. The backfill should be compacted to a minimum of 97% of the Modified Proctor Dry Density. Test (ASTM D 1557).

