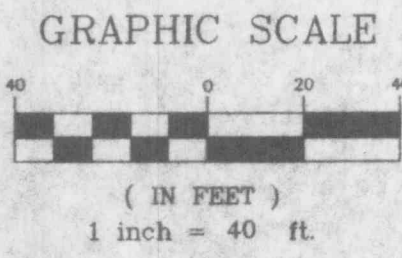


A DRAINAGE AREA PLAN OF THE FIRST BAPTIST CHURCH OF O'FALLON

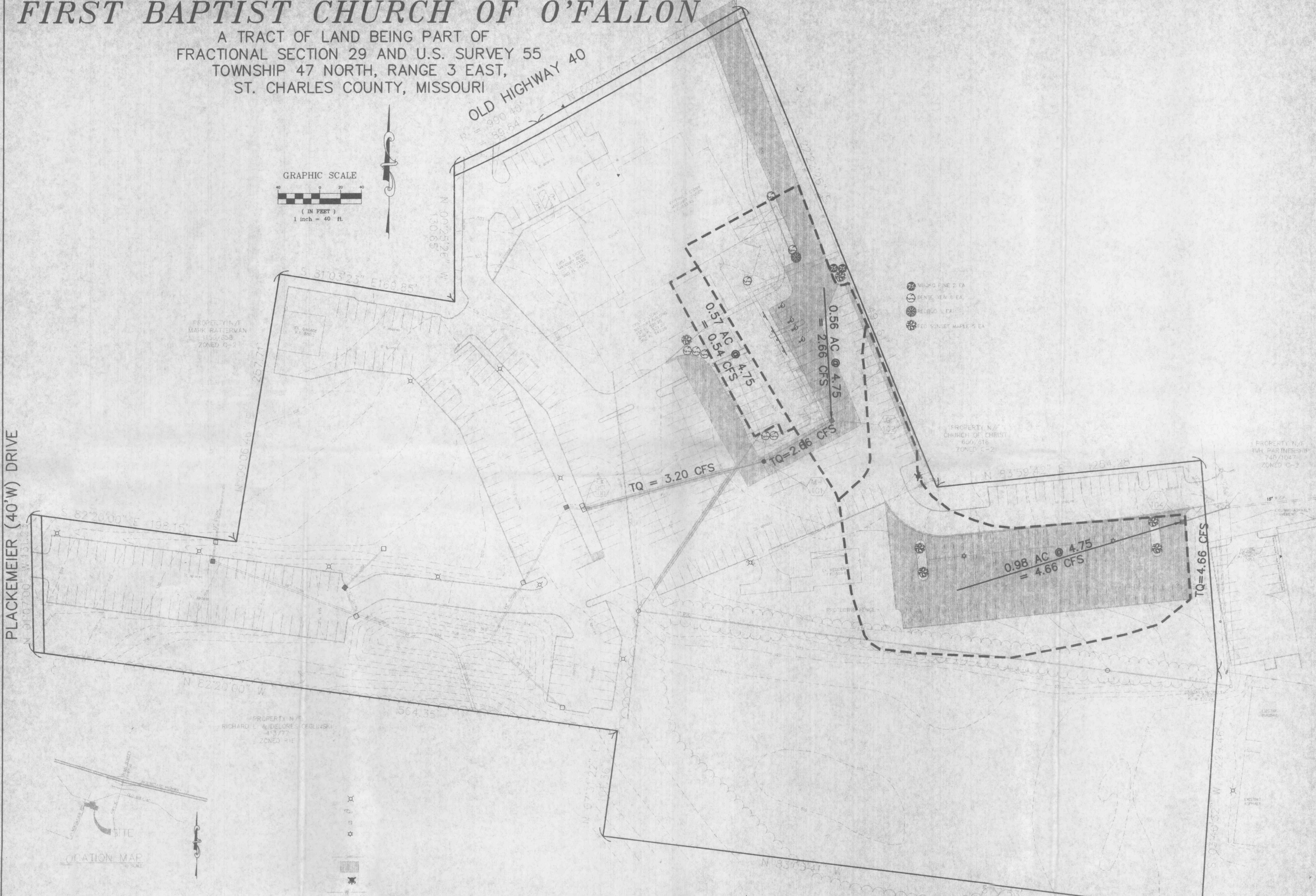
A TRACT OF LAND BEING PART OF
FRACTIONAL SECTION 29 AND U.S. SURVEY 55
TOWNSHIP 47 NORTH, RANGE 3 EAST,
ST. CHARLES COUNTY, MISSOURI

OLD HIGHWAY 40

PLACKEMEIER (40'W) DRIVE



- MULDO FINE 2 EA
- DENGE NEW 3 EA
- REUBO 1 EA
- PEC SUNSET MAPLE 5 EA

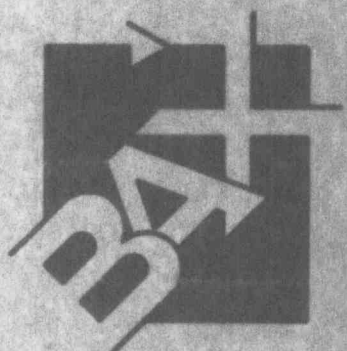


PREPARED FOR:
FIRST BAPTIST CHURCH OF O'FALLON
302 HIGHWAY 175
O'FALLON MO. 63366

DISCLAIMER OF RESPONSIBILITY
I hereby certify that the documents intended to be submitted by my seal are limited to the sheet and I hereby disclaim any responsibility for all other Drawings, Specifications, Estimates, Reports or other documents or instruments relating to or intended to be used for any part or parts of the architectural or engineering project or survey.

Copyright © 1994
BPA Engineering Company, Inc.
All Rights Reserved

REVISIONS	
6-11-96	ADD NEW SEWER
6-18-96	REVISE SEWER
6-28-96	REVISE SEWER



ENGINEERING
PLANNING
SURVEYING
1052 South Cloverleaf Drive
St. Peters, MO. 63376-6446
314-928-5552
FAX 928-1718

10-16-95
DATE
93-4007A
PROJECT NUMBER
3 of 3
SHEET OF
4007CON.DWG
FILE NAME
PJS
DRAWN CHECKED

THIS SHEET FOR DRAINAGE AREA PURPOSES ONLY. NOT FOR CONSTRUCTION

16-4007CON Thu Jun 27 14:34:45 1996