

PROPERTY N/F
ADOLPHUS BUSCH
1544/1962
ST. CHARLES COUNTY UNZONED

PROPERTY N/F
PAUL & ELLEN DIDION
1260/725
O'FALLON
UNZONED

GRAPHIC SCALE

(IN FEET)
1 inch = 40 ft.

PROPERTY N/F
MISSOURI EDISON CO.
560/388
O'FALLON
UNZONED

PROPERTY N/F
UNION ELECTRIC CO.
836/1491

PROPERTY N/F
NOTHUM GROUP, INC.
1930/1198
ZONED R-3

DMA Design
A Division of The DMA Corporation
architects engineers construction managers
202 Transit St. Charles, Missouri 63301

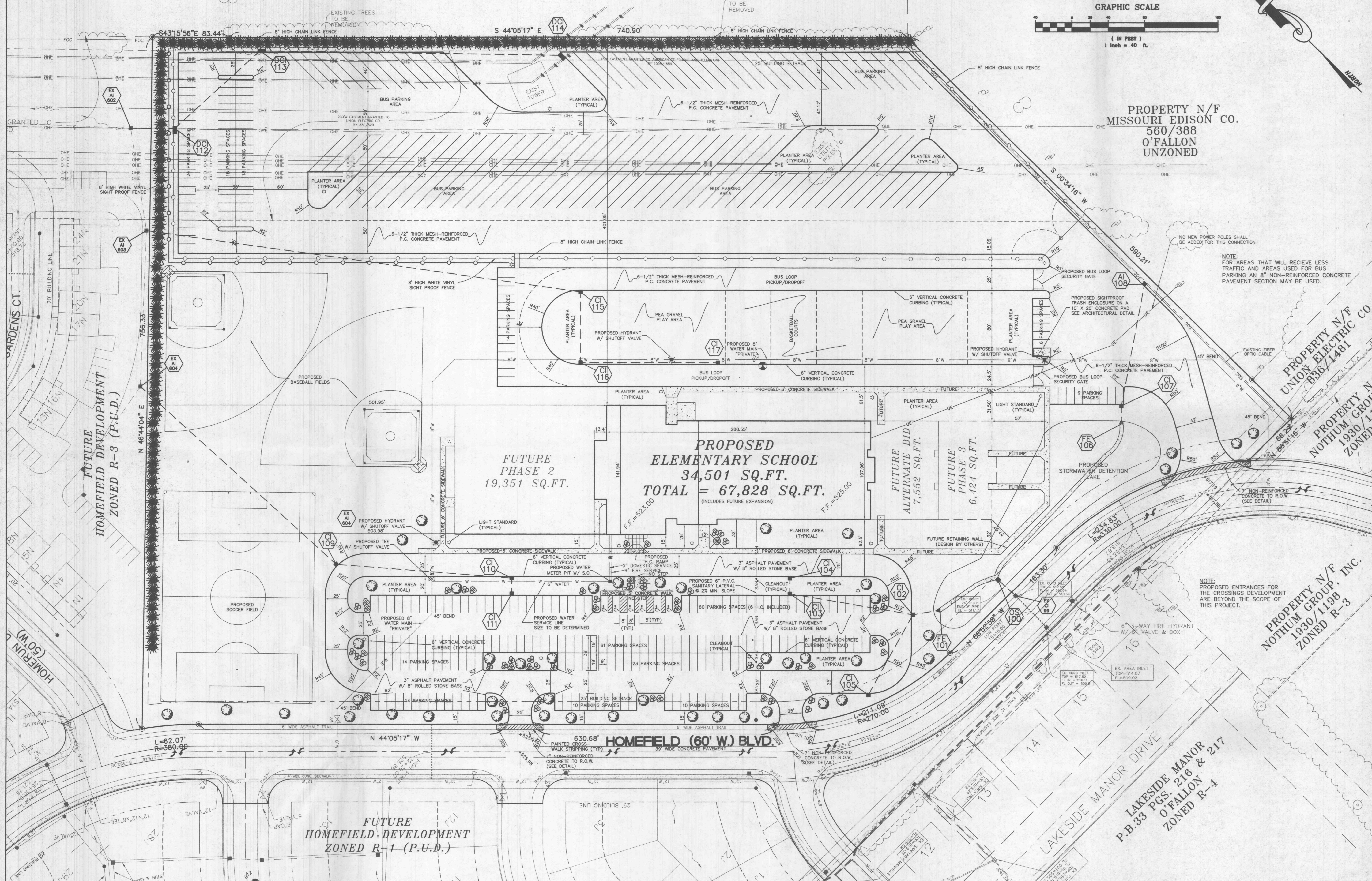
NEW ELEMENTARY SCHOOL FOR:
FORT ZUMWALT SCHOOL DISTRICT

ISSUED _____
DATE _____
REASON ISSUED _____

REV. 1-28-00 PER CITY
REV. 1-5-00 PER CITY

Proj. No. _____
Date: _____
Plot: _____

SITE PLAN
C-2



	ENGINEERING	ENGINEERING PLANNING SURVEYING	11-3-99
	PLANNING	1062 South Cloverleaf Drive St. Peters, MO. 63376-6445 (636) 928-5552 FAX 928-1718	98-10001T PROJECT NUMBER
	SURVEYING	JLG CLH DRAWN CHECKED REVISIONS	

E:\mva\100000plus\100011con.dwg Wed Feb 02 13:40:01 2000 - STATION 03 - JG