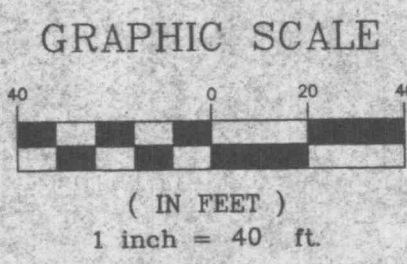


# A SITE PLAN FOR FORT ZUMWALT ELEMENTARY SCHOOL

A TRACT OF LAND IN FRACTIONAL  
SECTION 18, U.S. SURVEY 1696  
TOWNSHIP 46 NORTH, RANGE 3 EAST  
OF THE FIFTH PRINCIPAL MERIDIAN,  
ST. CHARLES COUNTY, MISSOURI



R-1 SINGLE FAMILY RESIDENTIAL (CITY OF O'FALLON)

EXISTING 100 - YEAR FLOODWAY LIMIT ELEV=482.00

PROP N/F PAUL & FRED LOEFFLER BK 302 PG 469

PROP N/F VICTORY BAPTIST CHURCH

THE VILLAGES OF PHEASANT POINT VILLAGES 2A & 5A PB 25 PG 42

N 63°35'25" E

1135.00'

500.00'

S 26°24'35" E

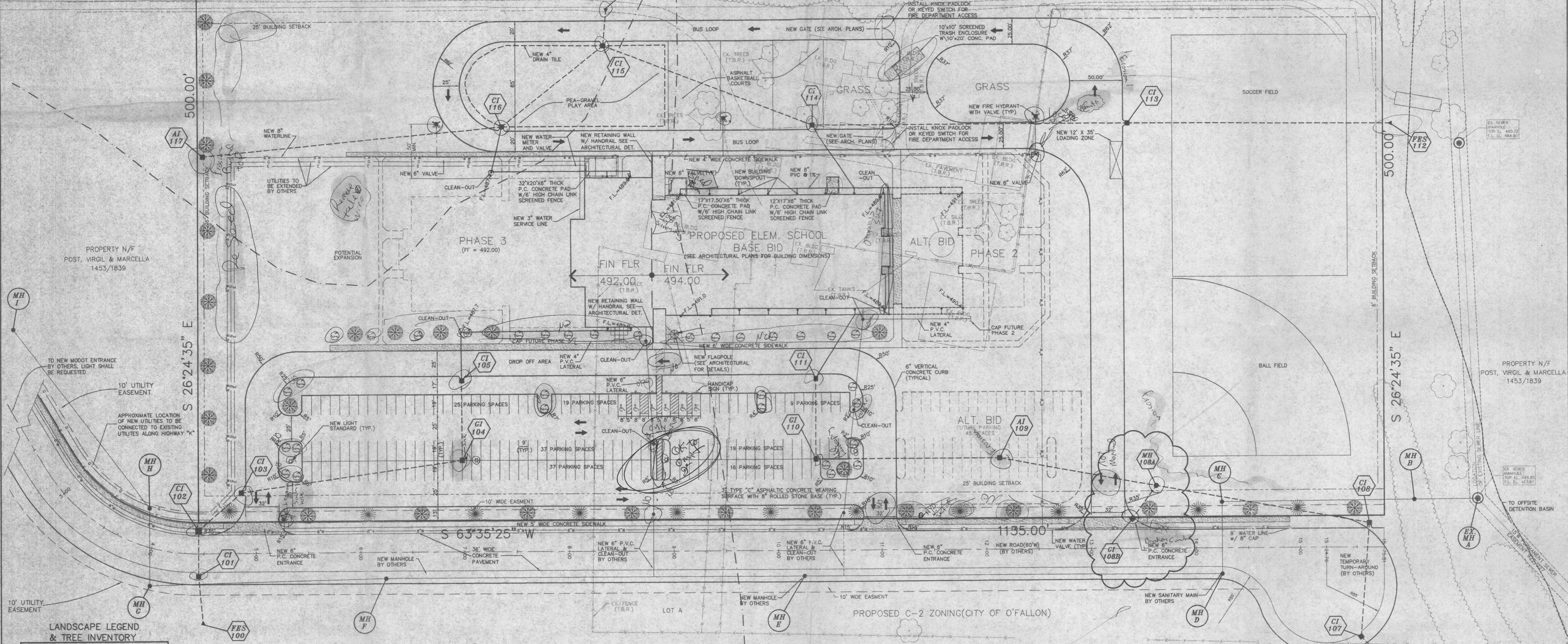
1135.00'

S 63°35'25" W

500.00'

S 26°24'35" E

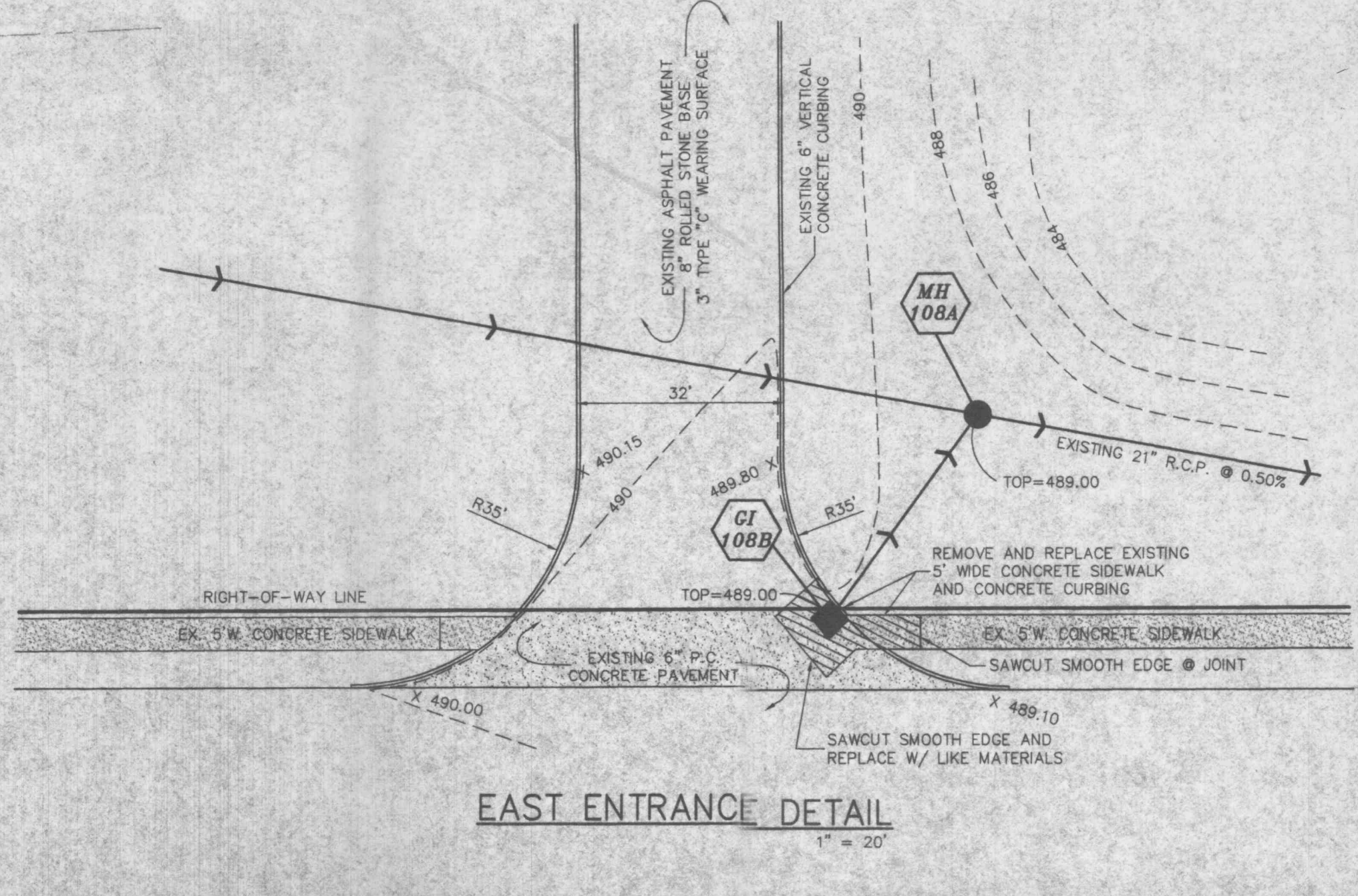
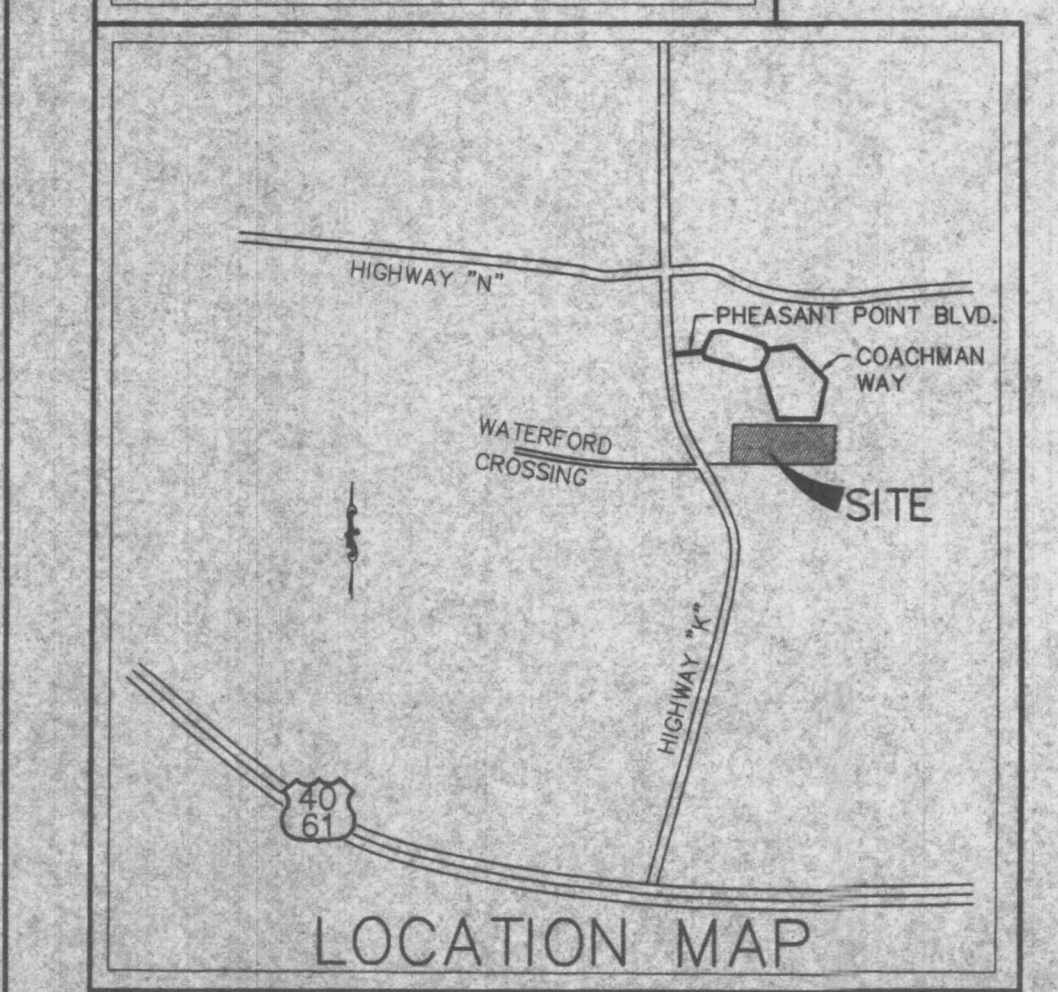
1135.00'



**LANDSCAPE LEGEND & TREE INVENTORY**

TREE INVENTORY:  
(A) NO EXISTING TREES ON SITE  
(B) 35 NEW TREES PROVIDED

- ELEVEN (11) GLAUCUA JUNIPER
- TWENTYTHREE (23) 2" CALIPER RED MAPLE
- THIRTYONE (31) 18" CHINA GIRL HOLLY



**DMA Design**  
A Division of The DMA Corporation  
architects engineers construction managers  
202 Transit St. Charles, Missouri 63301

**NEW HIGHWAY "K" ELEMENTARY SCHOOL**  
for  
**FORT ZUMWALT SCHOOL DISTRICT**

ISSUED  
11-14-97  
BID PACKAGE No. 2

REVISIONS:  
8/19/98  
1/4/98

Proj. No. 970334  
Date: 11-14-97  
Plot: 11-17-97

C-2

**DISCLAIMER OF RESPONSIBILITY**  
I hereby certify that the documents intended to be submitted by my seal are limited to the work and I hereby disclaim any responsibility for all other drawings, specifications, estimates, reports or other documents or instruments relating to or attached to be used for any part or parts of the construction or engineering project or survey.

**BAT**  
ENGINEERING  
PLANNING  
SURVEYING

1052 South Cloverleaf Drive  
St. Peters, MO. 63376-6445  
314-928-5552  
FAX 928-1710

Copyright 1997  
Bat Engineering Company, Inc.  
All Rights Reserved