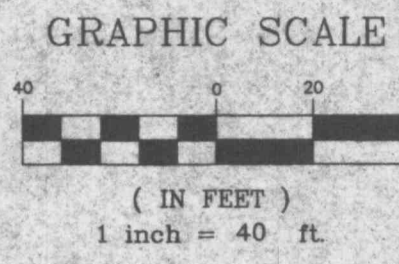


A GRADING PLAN FOR FORT ZUMWALT ELEMENTARY SCHOOL

A TRACT OF LAND IN FRACTIONAL
SECTION 16, U.S. SURVEY 1696
TOWNSHIP 46 NORTH, RANGE 3 EAST
OF THE FIFTH PRINCIPAL MERIDIAN,
ST. CHARLES COUNTY, MISSOURI



R-1 SINGLE FAMILY RESIDENTIAL(CITY OF O'FALLON)

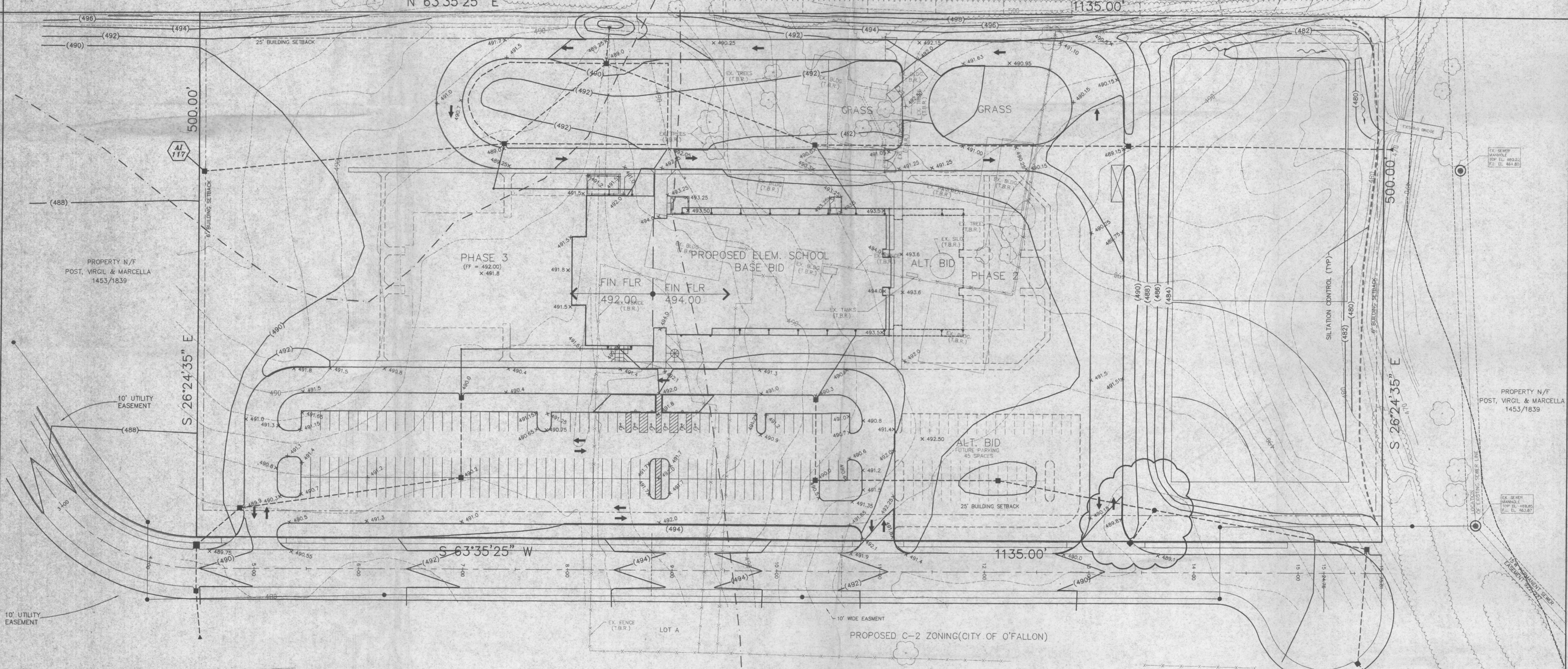
PROP N/F
VICTORY BAPTIST CHURCH

EXISTING 100 - YEAR
FLOOD PLAIN LIMIT
ELEV=482.00

THE VILLAGES OF
PHEASANT POINT
VILLAGES 2A & 5A
FB 25 PG 42

PROP N/F
PAUL & FRED LOEFFLER
BK 302 PG 469

ZONED R-1A (ST. CHARLES COUNTY)



DMA Design
A Division of The DMA Corporation
architects engineers construction managers
202 Transit St. Charles, Missouri 63301



NEW HIGHWAY "K" ELEMENTARY SCHOOL
for
FORT ZUMWALT SCHOOL DISTRICT

ISSUED
11-14-97
BID PACKAGE No. 2

REVISIONS:
8/19/98
1/4/98

Proj. No. 970334
Date: 11-14-97
Plot: 11-17-97

C-3

DISCLAIMER OF RESPONSIBILITY
I hereby certify that the documents prepared
by me and my staff are true and correct to the
best of my knowledge and belief, and I am not
aware of any facts or circumstances which
might render them inaccurate or misleading.
I am not a professional engineer or architect
and I am not licensed in any state or
country to practice as such. My services are
limited to those specifically stated in the
contract documents for this project.



ENGINEERING
PLANNING
SURVEYING
1052 South Cloverleaf Drive
St. Peters, MO. 63376-6445
314-928-5502
FAX 928-1718

Copyright 1997
BAT Engineering Company, Inc.
All Rights Reserved