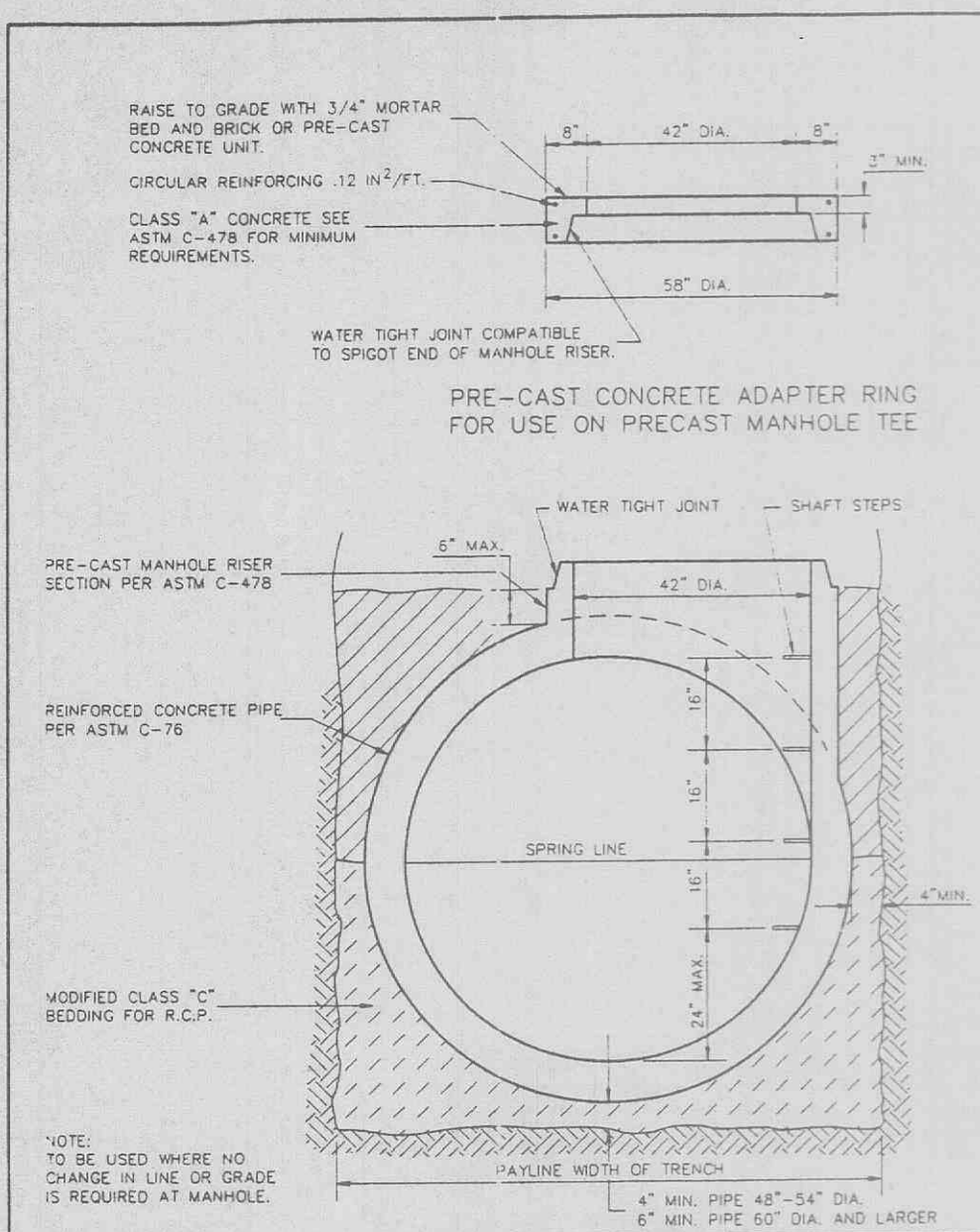
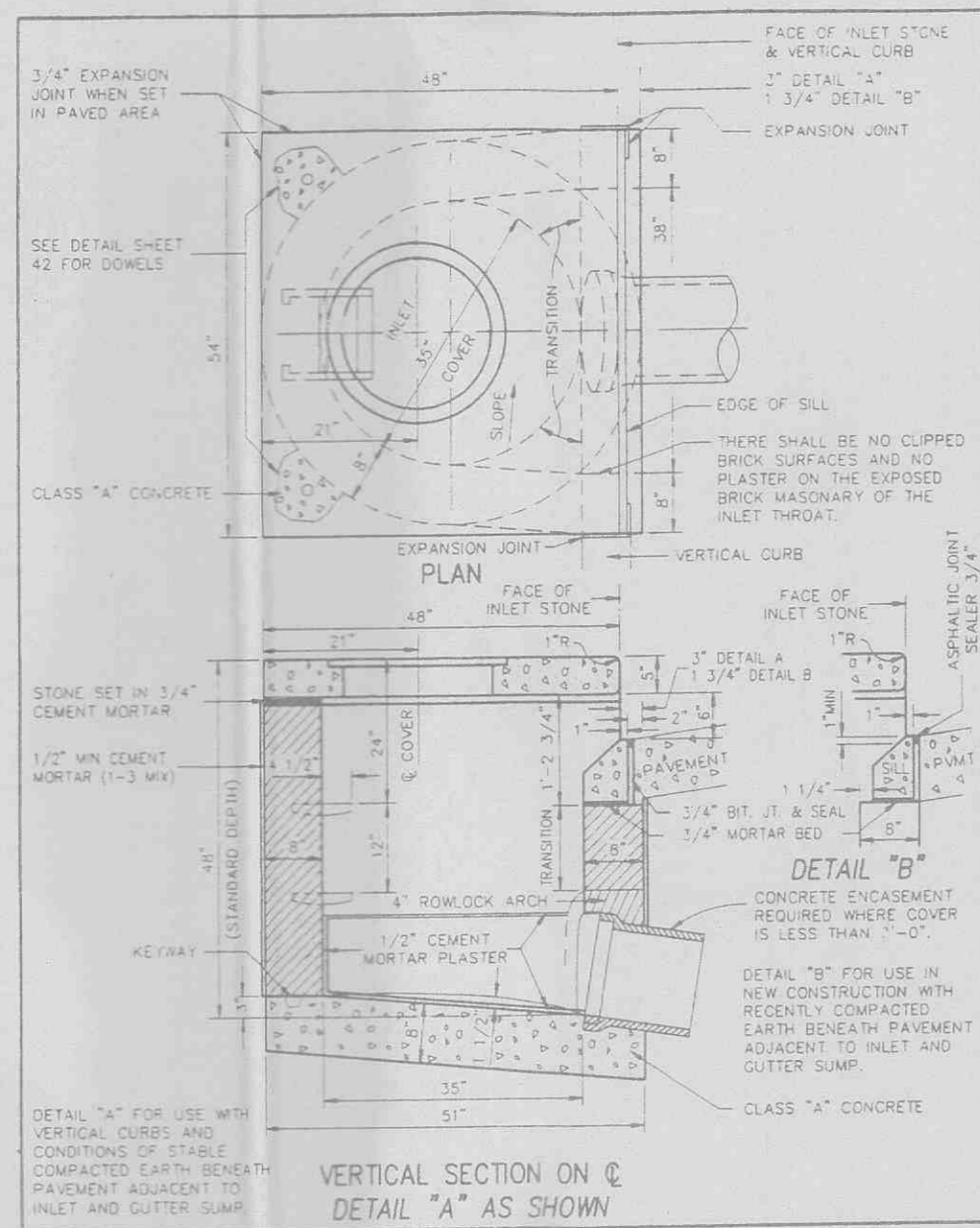


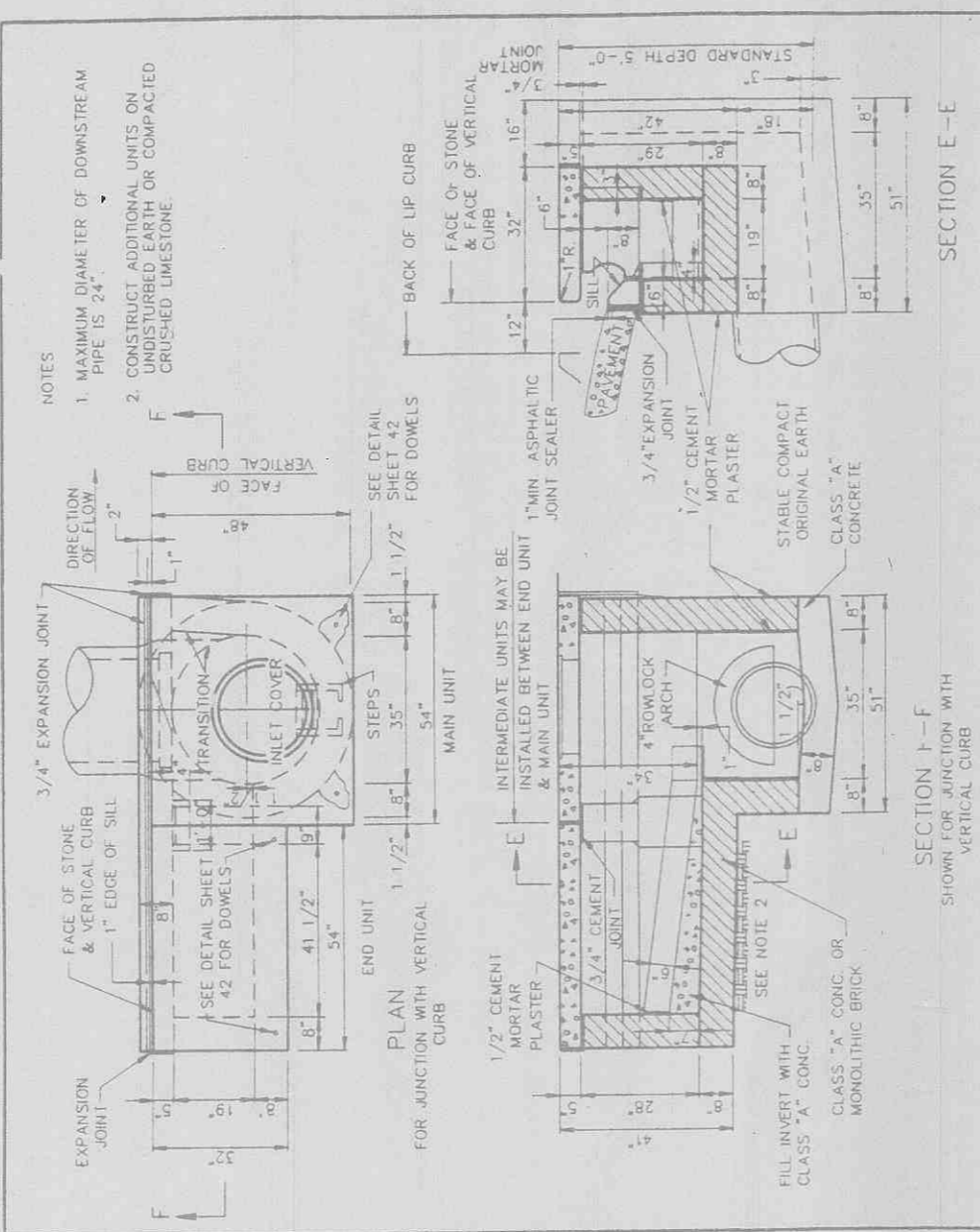
CONSTRUCTION DETAILS



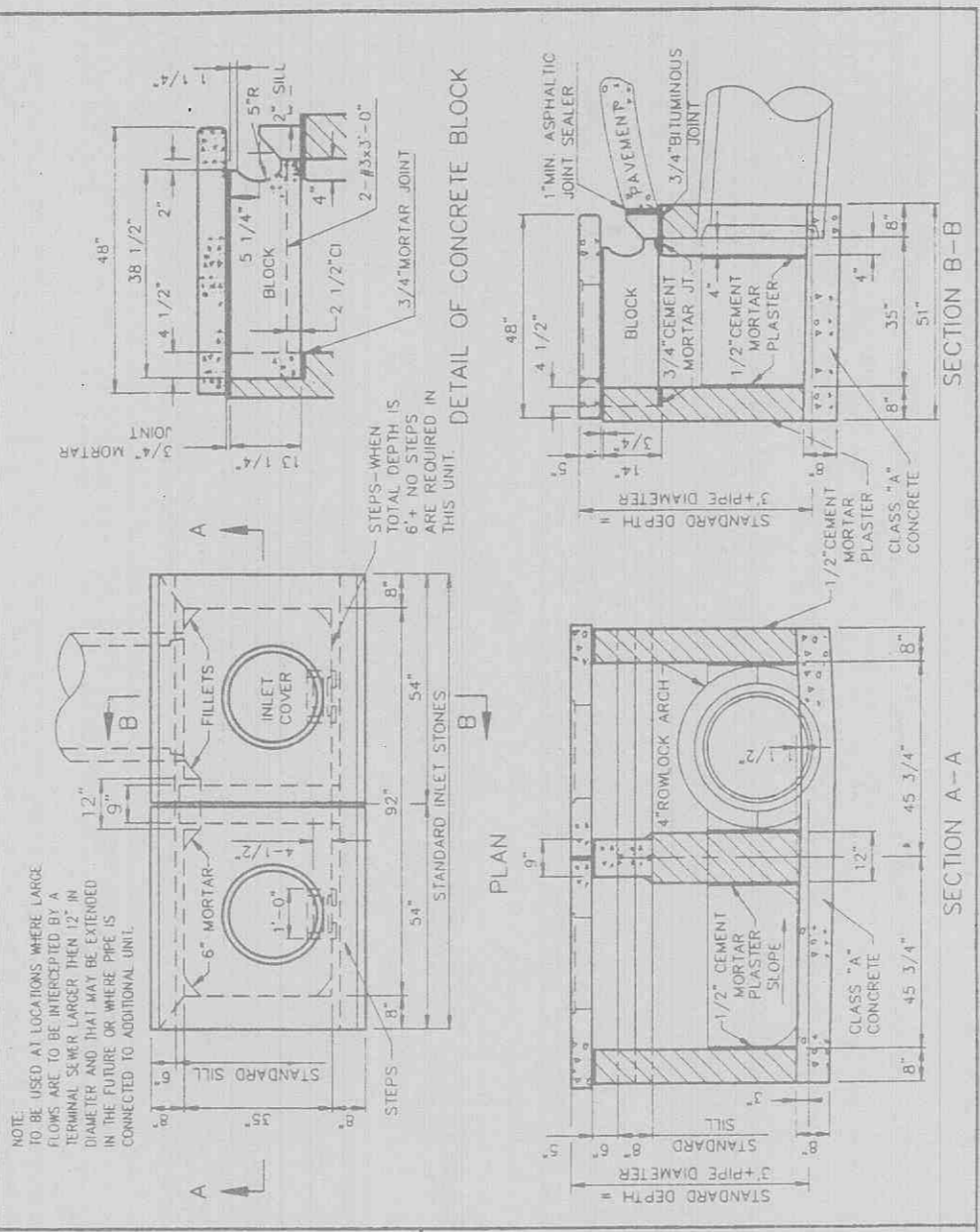
TYPICAL PRE-CAST MH. TEE FOR REINFORCED CONCRETE PIPE SEWERS 48\"/>



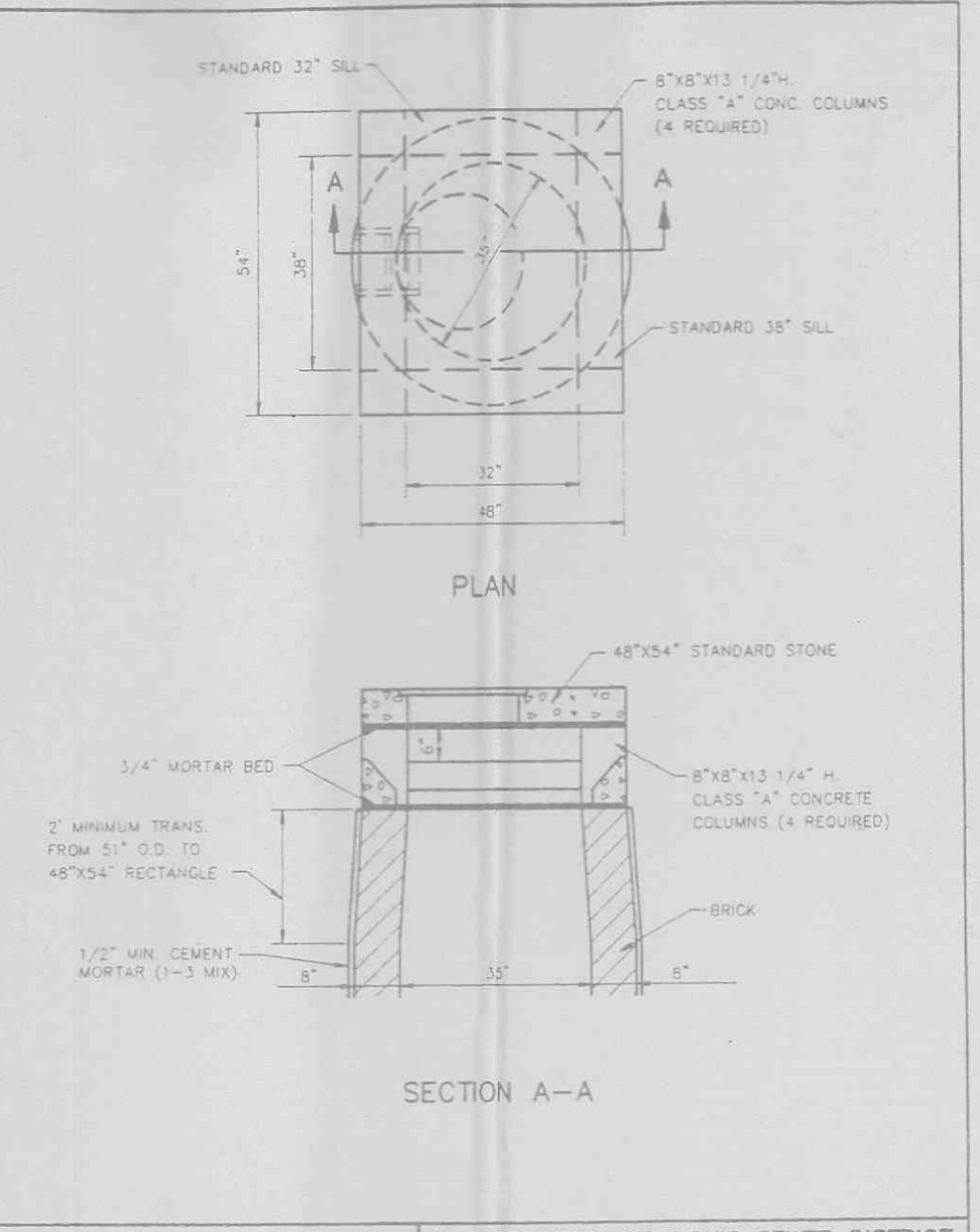
UNTRAPPED STREET INLET BRICK CONSTRUCTION
 METROPOLITAN ST. LOUIS SEWER DISTRICT
 Standard Details of Sewer Construction
 Dr. W.S.H. 1992 SHEET 20
 Ch. J.C.K.



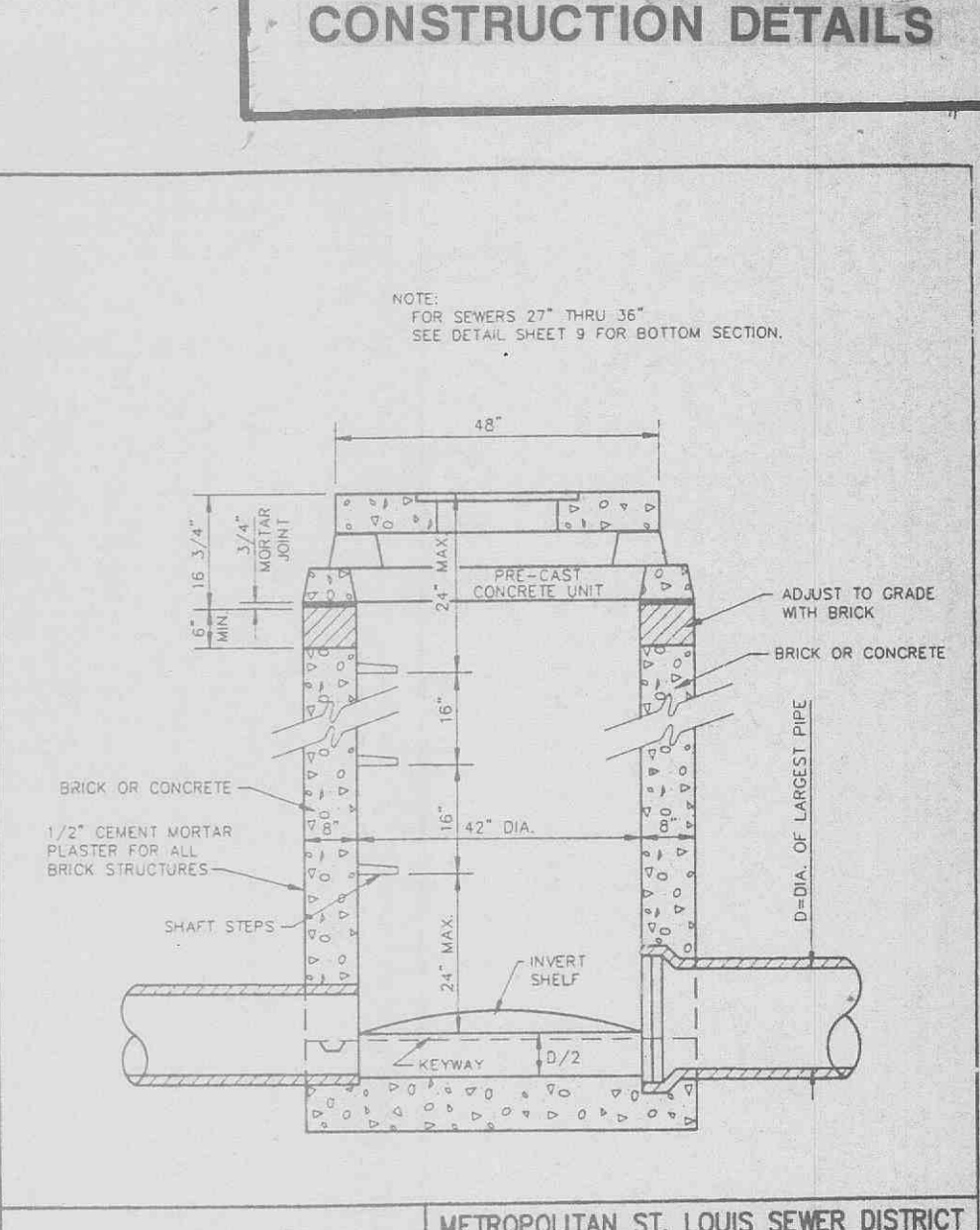
MULTIPLE STREET INLET BRICK CONSTRUCTION
 METROPOLITAN ST. LOUIS SEWER DISTRICT
 Standard Details of Sewer Construction
 Dr. D.A.B. 1992 SHEET 22
 Ch. J.C.K.



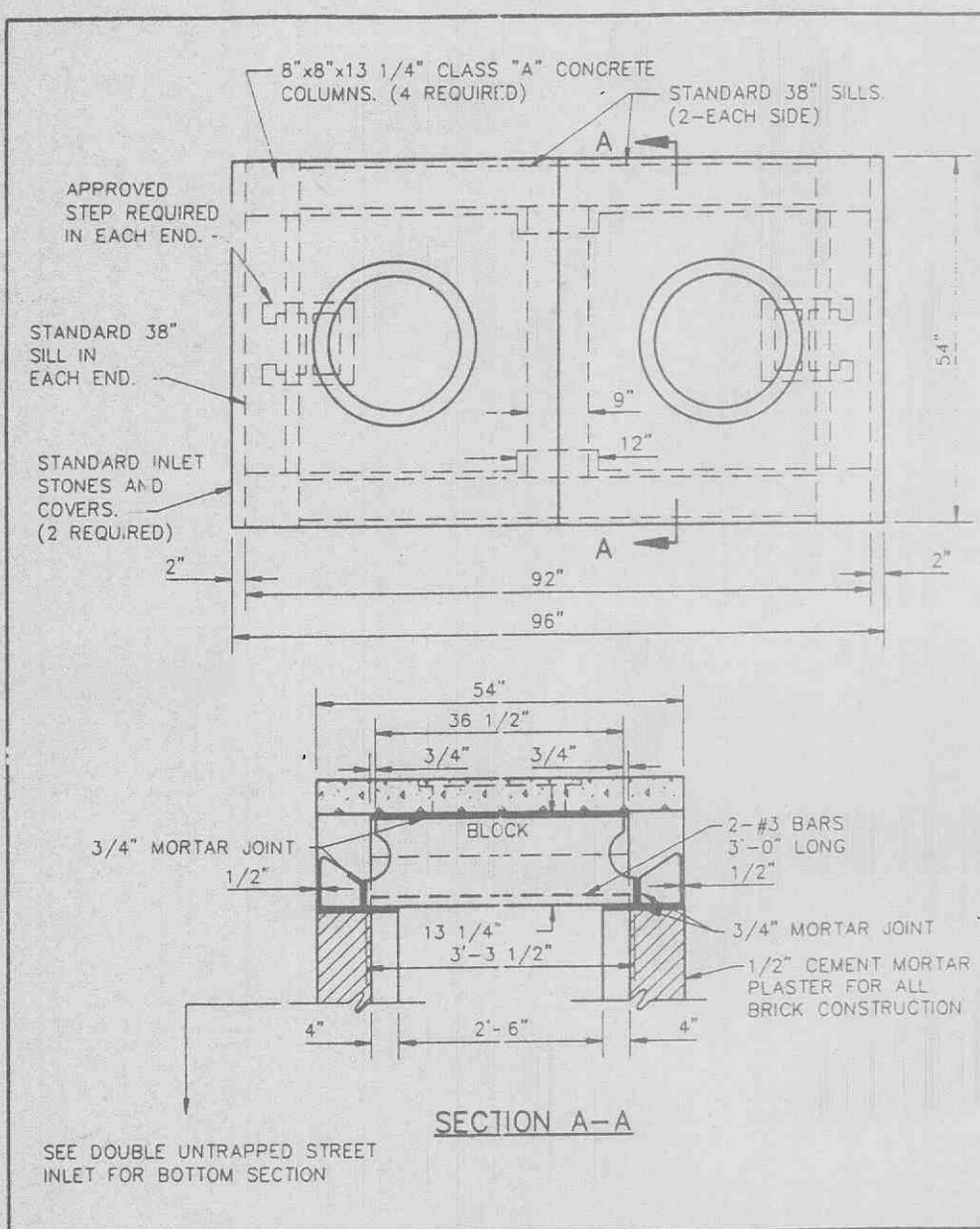
DOUBLE UNTRAPPED STREET INLET BRICK CONSTRUCTION
 METROPOLITAN ST. LOUIS SEWER DISTRICT
 Standard Details of Sewer Construction
 Dr. D.A.B. 1992 SHEET 23
 Ch. J.C.K.



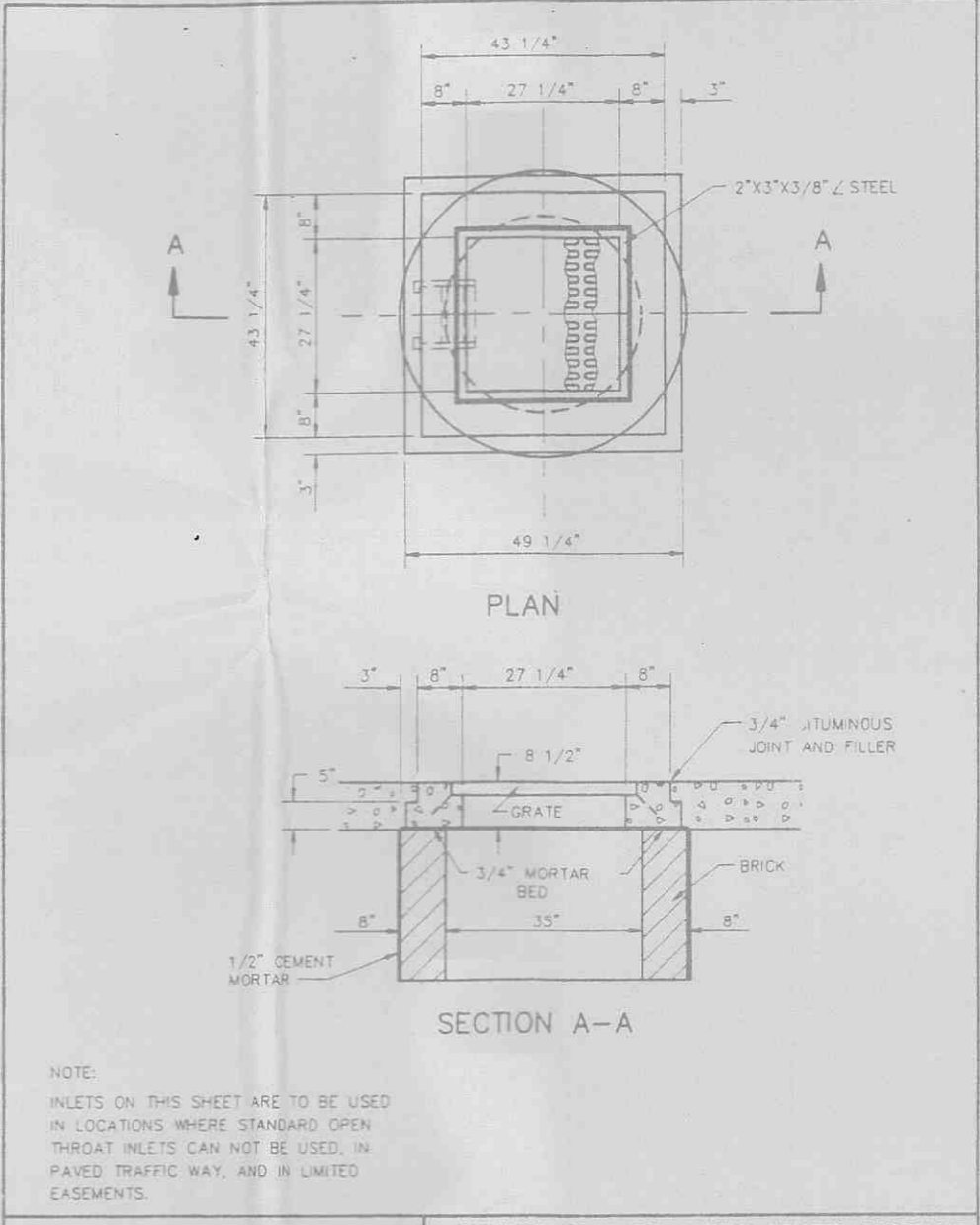
AREA INLET OPEN 4 SIDES BRICK CONSTRUCTION
 METROPOLITAN ST. LOUIS SEWER DISTRICT
 Standard Details of Sewer Construction
 Dr. R.G.W. 1992 SHEET 24
 Ch. J.C.K.



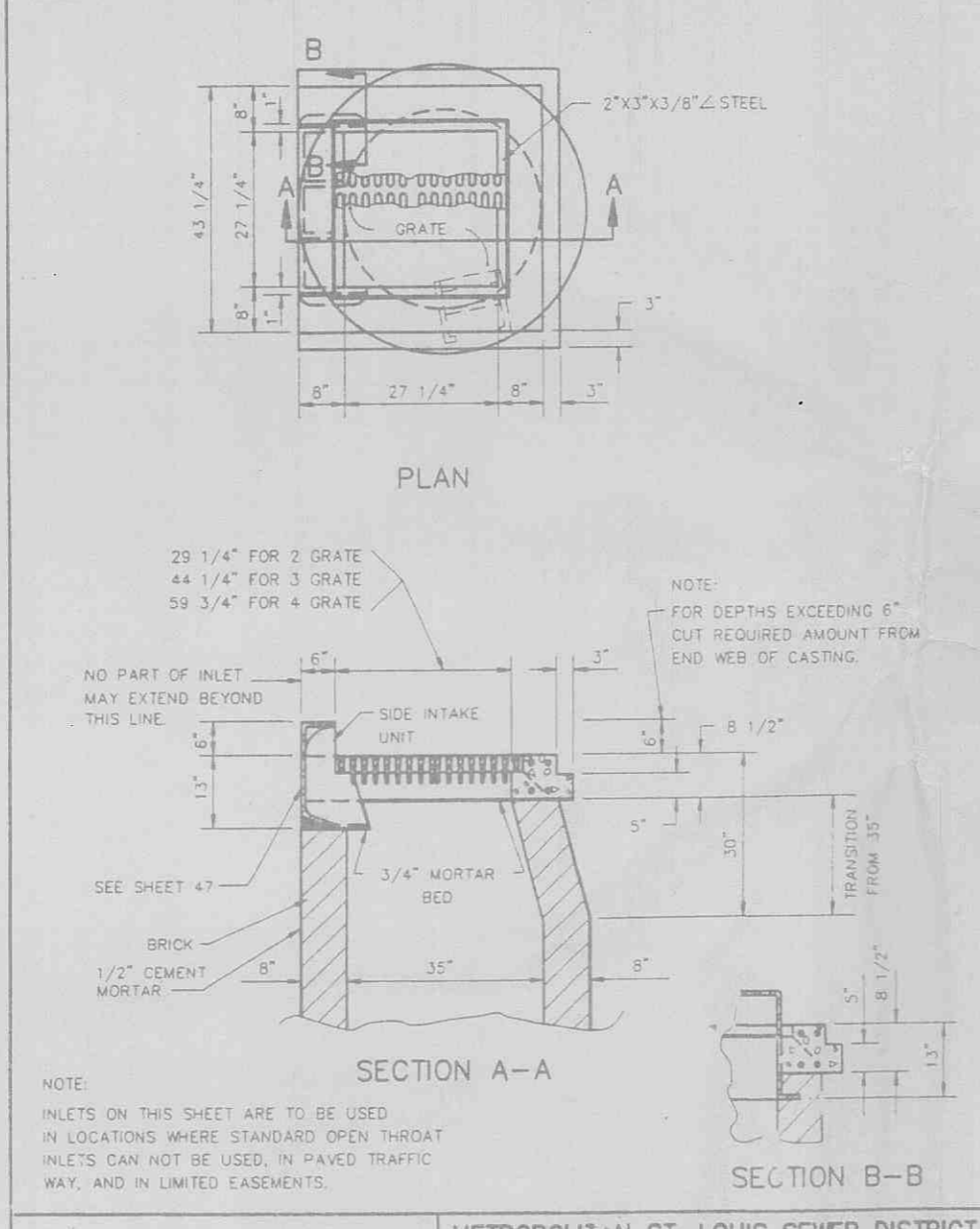
AREA INLET MANHOLE (12\"/>



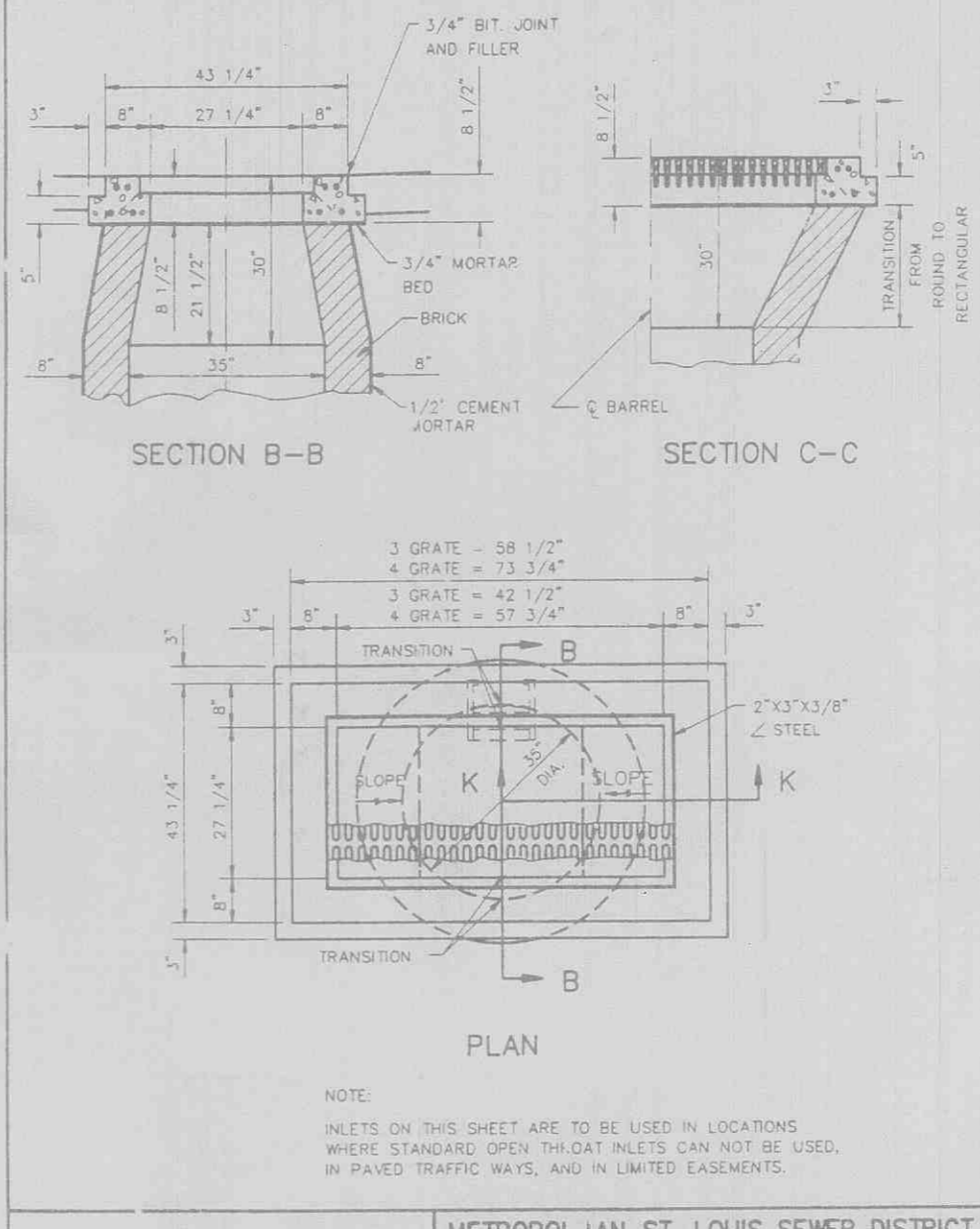
DOUBLE AREA INLET OPEN 4 SIDES BRICK CONSTRUCTION
 METROPOLITAN ST. LOUIS SEWER DISTRICT
 Standard Details of Sewer Construction
 Dr. R.G.W. 1992 SHEET 26
 Ch. J.C.K.



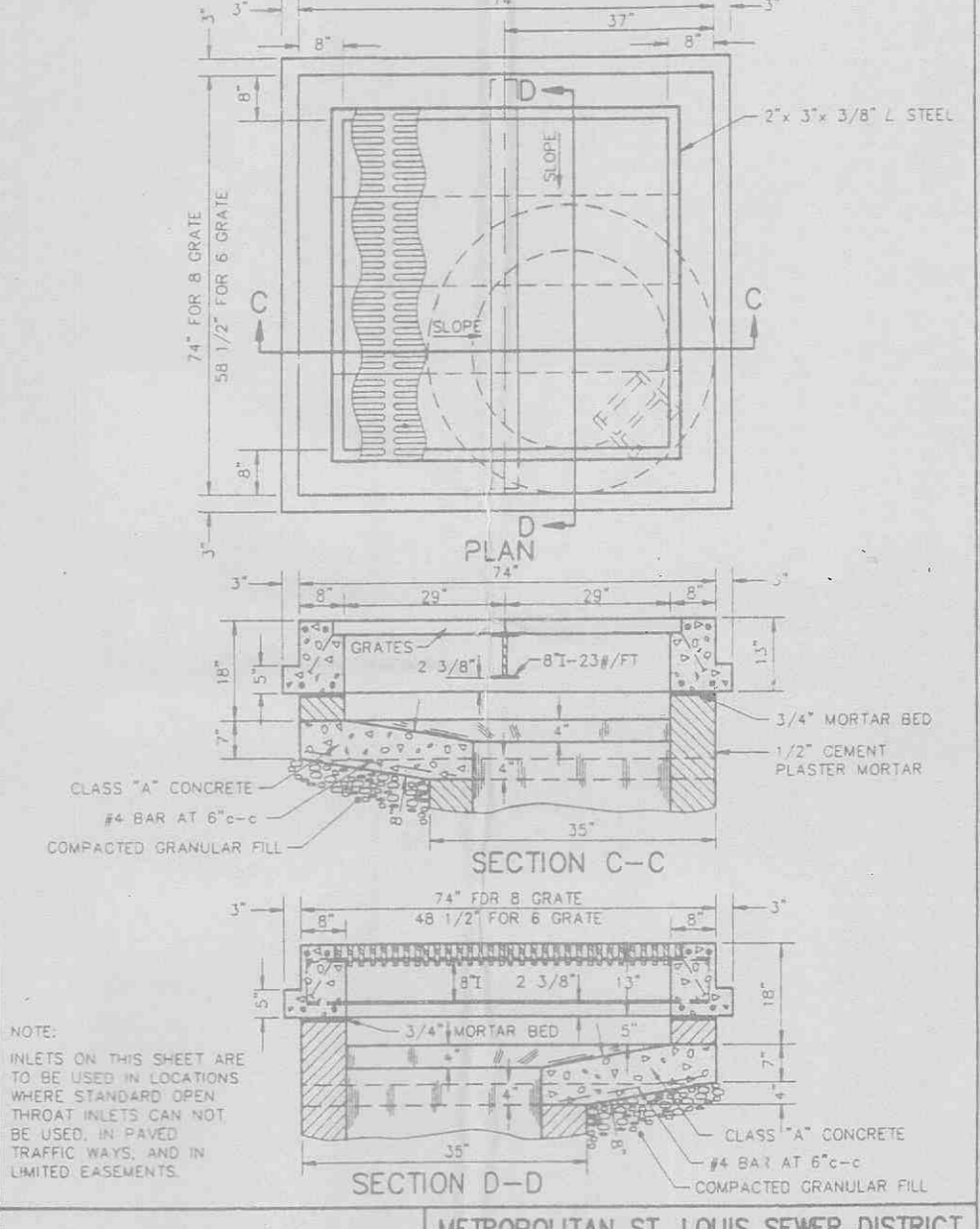
2 GRATE INLET BRICK CONSTRUCTION
 METROPOLITAN ST. LOUIS SEWER DISTRICT
 Standard Details of Sewer Construction
 Dr. R.G.W. 1992 SHEET 27
 Ch. J.C.K.



2 GRATE INLET WITH SIDE INTAKE BRICK CONSTRUCTION
 METROPOLITAN ST. LOUIS SEWER DISTRICT
 Standard Details of Sewer Construction
 Dr. R.G.W. 1992 SHEET 28
 Ch. J.C.K.



3 & 4 GRATE INLET BRICK CONSTRUCTION
 METROPOLITAN ST. LOUIS SEWER DISTRICT
 Standard Details of Sewer Construction
 Dr. R.G.W. 1992 SHEET 29
 Ch. J.C.K.



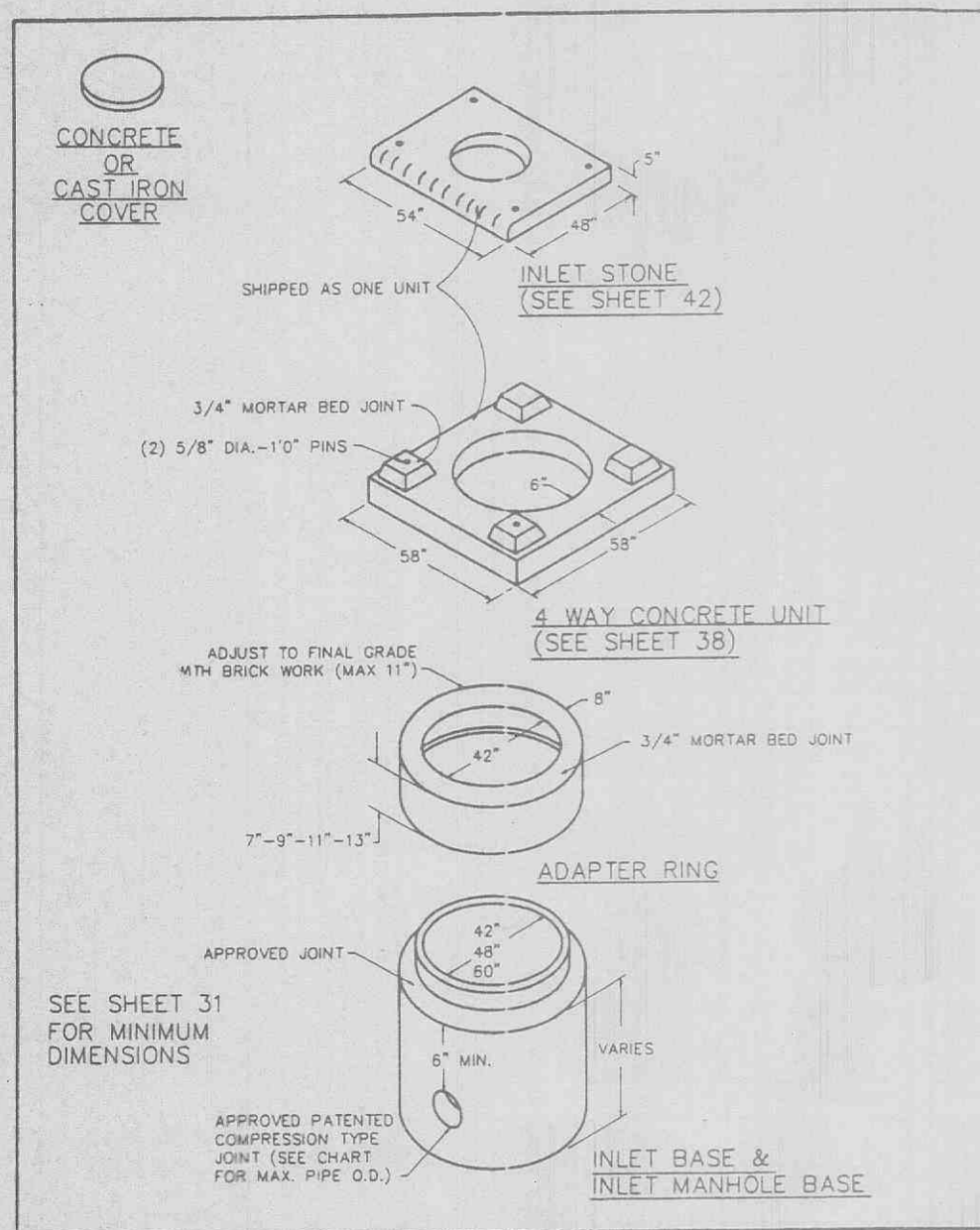
6 & 8 GRATE INLET BRICK CONSTRUCTION
 METROPOLITAN ST. LOUIS SEWER DISTRICT
 Standard Details of Sewer Construction
 Dr. W.S.H. 1992 SHEET 30
 Ch. J.C.K.

PRECAST CONCRETE STORMWATER STRUCTURES
 MINIMUM DISTANCE FLOWLINE TO TOP OF STONE OR GRATE

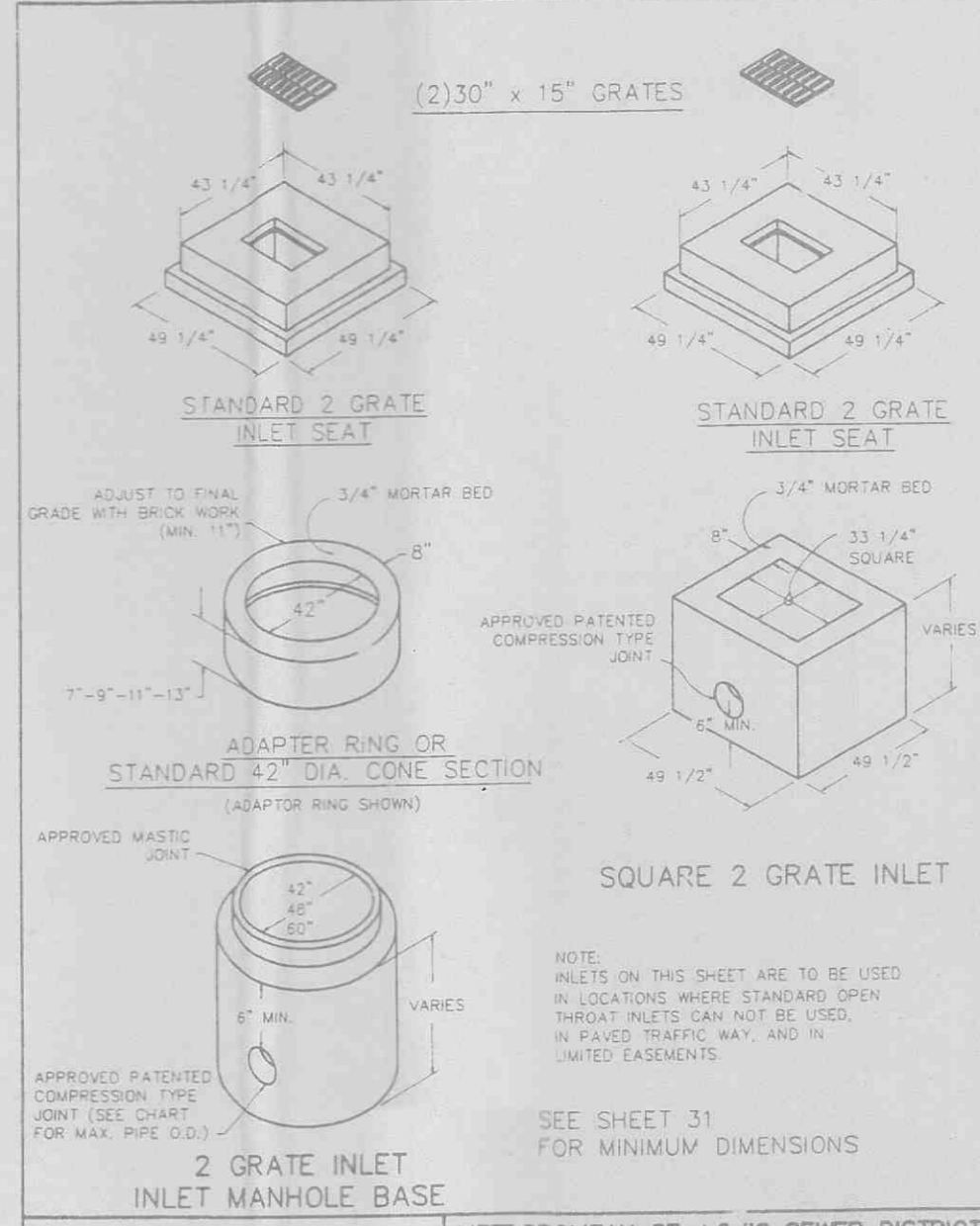
PIPE Ø NOMINAL INCHES	AREA INLET CIRCULAR BASE DIA. (MAX.)	2 GRATE INLET CIRCULAR BASE DIA. (MAX.)	SINGLE STREET INLET SQUARE CIRCULAR BASE DIA. (MAX.)
12"	45"	38"	31"
15"	48"	41"	34"
18"	52"	44"	37"
21"	55"	47"	40"
24"	58"	51"	44"
27"	62"	54"	47"
30"	65"	57"	50"
33"	68"	60"	53"

NOTE: 1. 48" DIA. BASE REQUIRES 1" HIGH TRANSITION SECTION TO 42" DIA. SIMILAR TO "ADAPTER RING" SHEET 32.
 2. 60" DIA. BASE REQUIRES 2" HIGH CONCENTRIC REDUCER TRANSITION TO 42" DIA. SIMILAR TO "ADAPTER RING" SHEET 32.

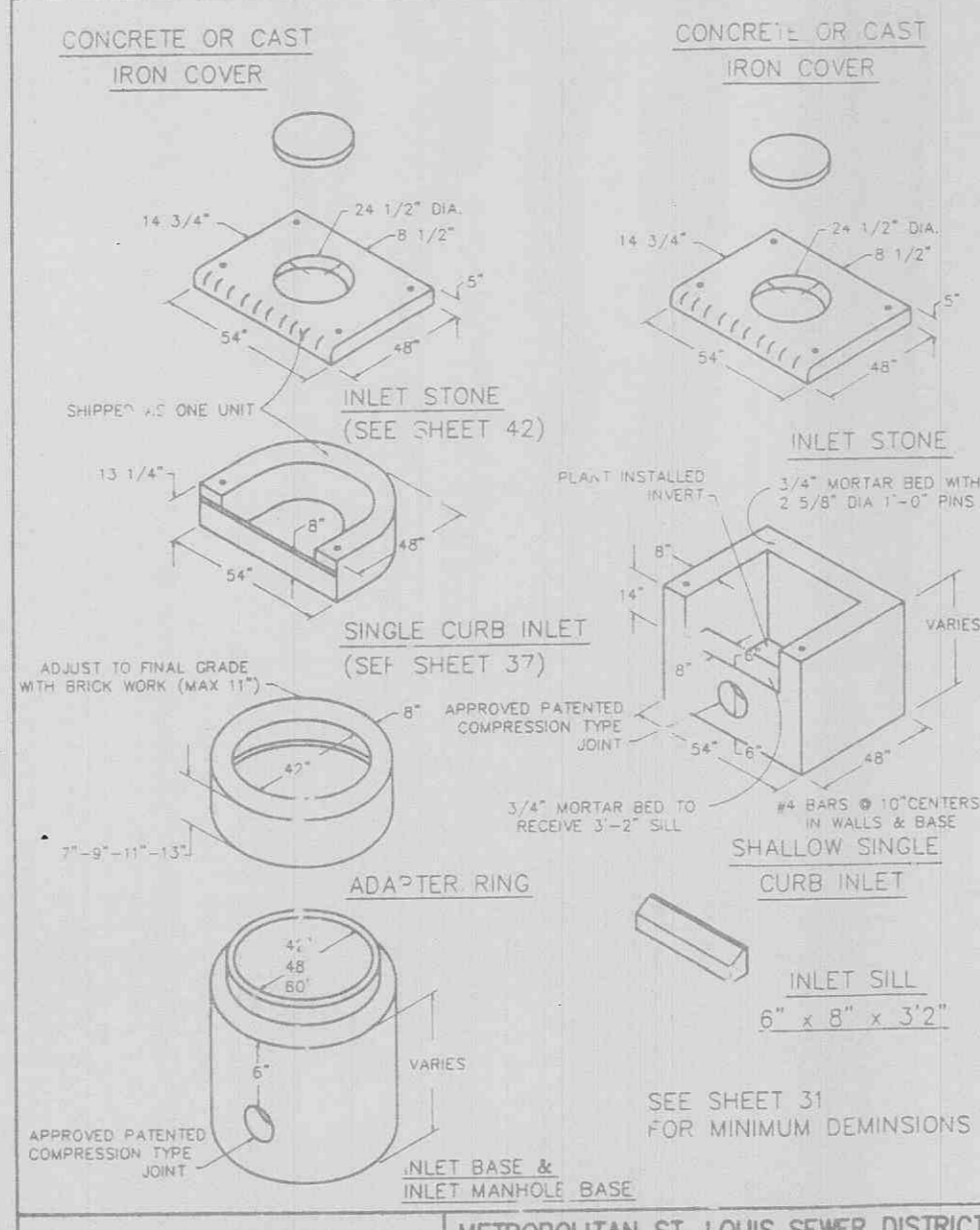
PRECAST CONCRETE STORMWATER STRUCTURES
 METROPOLITAN ST. LOUIS SEWER DISTRICT
 Standard Details of Sewer Construction
 Dr. J.L.G. SEPT. 1990 SHEET 31
 Ch. J.C.K.



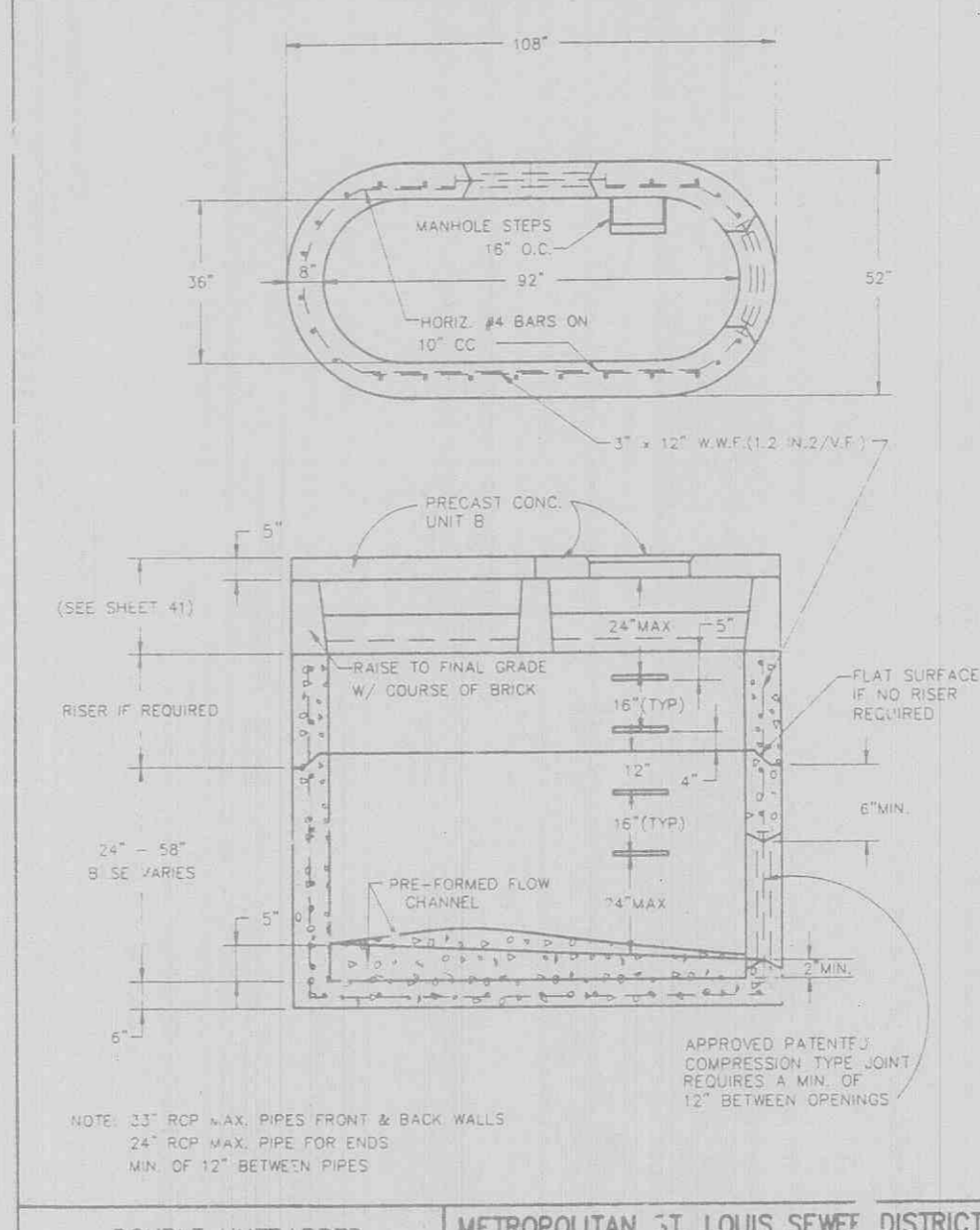
AREA INLET PRECAST CONCRETE
 METROPOLITAN ST. LOUIS SEWER DISTRICT
 Standard Details of Sewer Construction
 Dr. J.L.G. APRIL 1992 SHEET 32
 Ch. J.C.K.



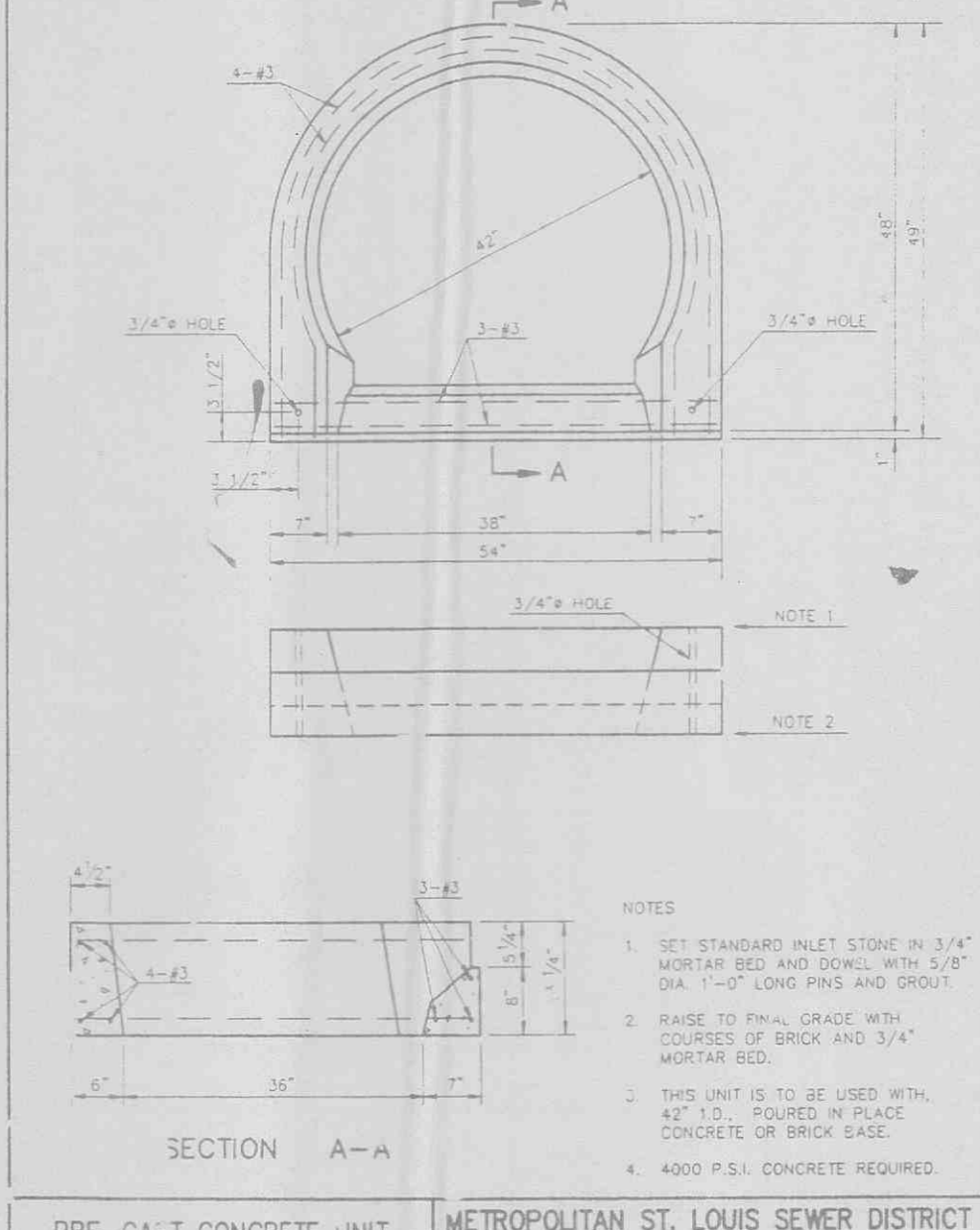
2 GRATE INLETS PRECAST CONCRETE
 METROPOLITAN ST. LOUIS SEWER DISTRICT
 Standard Details of Sewer Construction
 Dr. J.L.G. APRIL 1992 SHEET 33
 Ch. J.C.K.



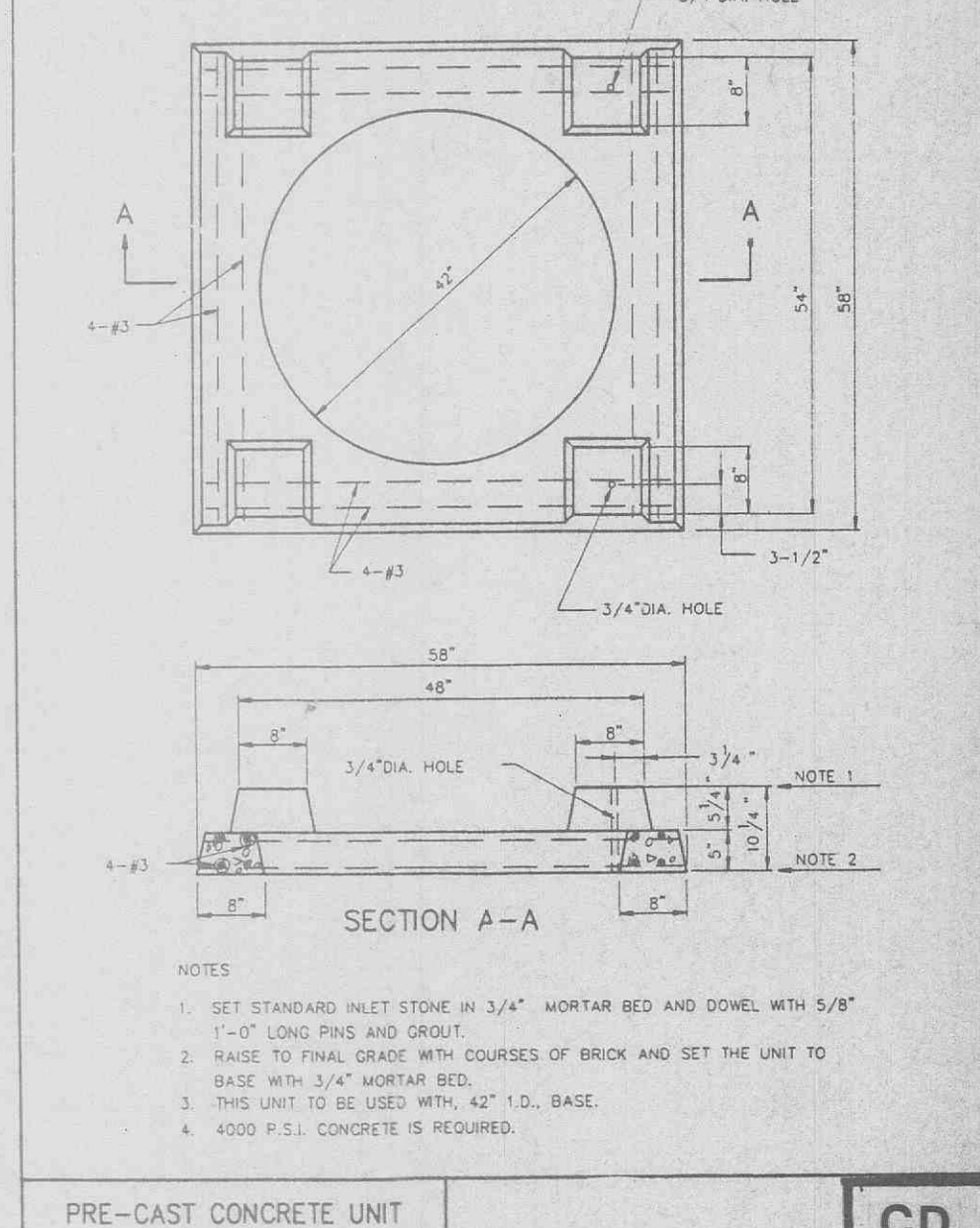
SINGLE STREET INLETS PRECAST CONCRETE
 METROPOLITAN ST. LOUIS SEWER DISTRICT
 Standard Details of Sewer Construction
 Dr. J.L.G. APRIL 1991 SHEET 34
 Ch. J.C.K.



DOUBLE UNTRAPPED STREET INLET PRECAST CONCRETE
 METROPOLITAN ST. LOUIS SEWER DISTRICT
 Standard Details of Sewer Construction
 Dr. J.L.G. SEPT. 1992 SHEET 35
 Ch. J.C.K.



PRE-CAST CONCRETE UNIT FOR SINGLE STREET INLET
 METROPOLITAN ST. LOUIS SEWER DISTRICT
 Standard Details of Sewer Construction
 Dr. W.S.H. 1992 SHEET 37
 Ch. J.C.K.



PRE-CAST CONCRETE UNIT FOR 4 WAY AREA INLET
 METROPOLITAN ST. LOUIS SEWER DISTRICT
 Standard Details of Sewer Construction
 Dr. W.S.H. 1992 SHEET 38
 Ch. J.C.K.