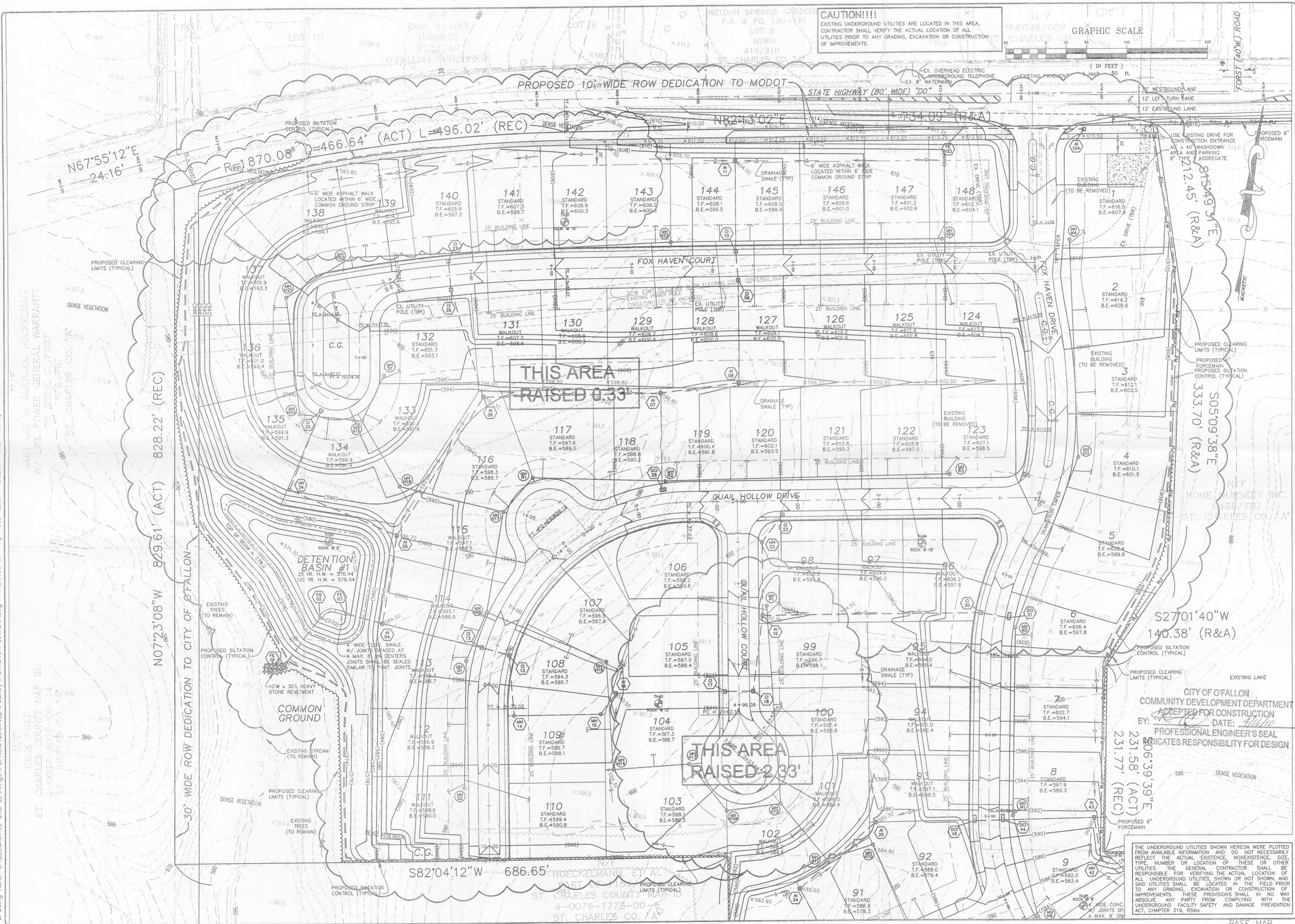
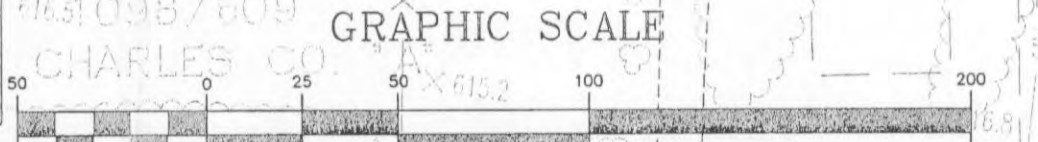


Drawing name: C:\Documents and Settings\rodney\Desktop\rodney\Foxhaven 61471\p.dwg Plotted on: Apr 08, 2010 - 8:28am Plotted by: rodney



**CAUTION!!!!**  
EXISTING UNDERGROUND UTILITIES ARE LOCATED IN THIS AREA. CONTRACTOR SHALL VERIFY THE ACTUAL LOCATION OF ALL UTILITIES PRIOR TO ANY GRADING, EXCAVATION OR CONSTRUCTION OF IMPROVEMENTS.



ISSUE	REMARKS/DATE
1	03-07-04 FIRST SUBMITTAL
2	06-15-04 REVISED PER CITY & DCS COMMENTS
3	07-20-04 REVISED PER CITY COMMENTS
4	08-04-04 REVISED PER PWS&H COMMENTS
5	08-12-04 REVISED PER PWS&H COMMENTS
6	10-19-04 REVISED PER OUTFALL COMMENTS
7	04-21-05 GRADING OUTFALL STRUCTURE C2
8	06-14-05 GRADING COMMENTS PER DEVELOPER
9	04-07-10 GRADING REVISED ON LOTS 138 - 142

PREPARED FOR:  
**McBride & Son Homes**  
Land Development, Inc.  
#1 McBride & Son Center Drive  
Chesterfield, Missouri 63005  
(636) 637-2000



PREPARED BY:  
**THE STERLING CO.**  
ENGINEERS & SURVEYORS  
5065 NEW BAUMGARTNER ROAD  
ST. LOUIS, MISSOURI 63129  
(314) 487-0440 FAX 487-8844  
E-Mail: Sterling@sterling-eng-sur.com

DRAWN:	DESIGNED:	CHECKED:
PROJECT: <b>FOX HAVEN</b>		
NO. <b>03 06 147</b>	M.S.D.	SHEET
FILE # <b>2</b>	OF <b>48</b>	
DIGITAL FILE LOCATION: SERVER-STERLING-2 61471\p.dwg		

THE UNDERGROUND UTILITIES SHOWN HEREON WERE PLOTTED FROM AVAILABLE INFORMATION AND DO NOT NECESSARILY REFLECT THE ACTUAL EXISTENCE, NONEXISTENCE, SIZE, TYPE, NUMBER OR LOCATION OF THESE OR OTHER UTILITIES. THE GENERAL CONTRACTOR SHALL BE RESPONSIBLE FOR VERIFYING THE ACTUAL LOCATION OF ALL UNDERGROUND UTILITIES, SHOWN OR NOT SHOWN, AND SAID UTILITIES SHALL BE LOCATED IN THE FIELD PRIOR TO ANY GRADING, EXCAVATION OR CONSTRUCTION OF IMPROVEMENTS. THESE PROVISIONS SHALL IN NO WAY ABSOLVE ANY PARTY FROM COMPLYING WITH THE UNDERGROUND FACILITY SAFETY AND DAMAGE PREVENTION ACT, CHAPTER 319, RSMo