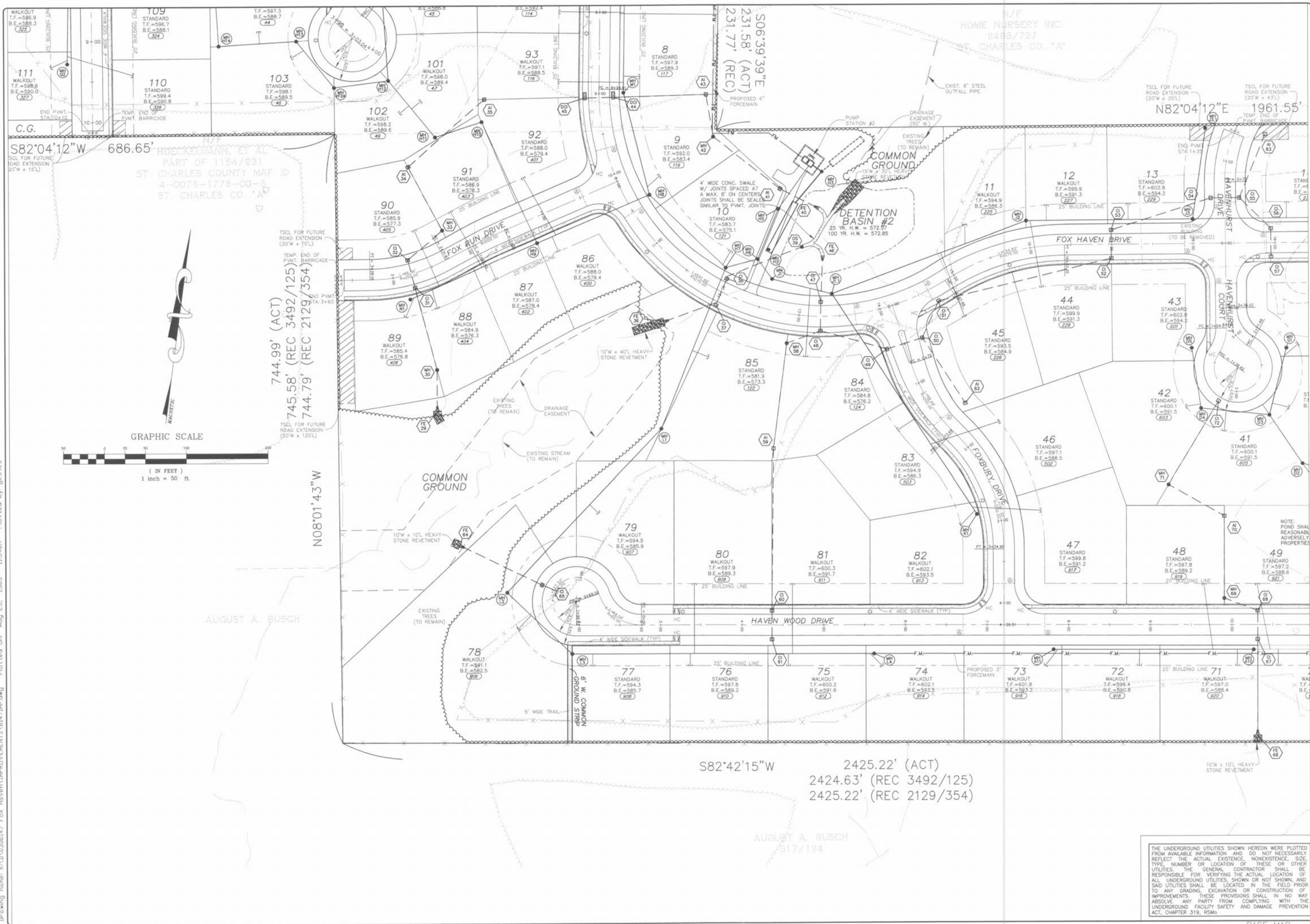


Drawing name: K:\D\0306147 Fox Haven\IMPROVEMENTS\6147IMP.dwg Plotted on: Aug 23, 2005 - 11:34am Plotted by: gastes



ISSUE	REMARKS/DATE
1	03-01-04 FIRST SUBMITTAL
2	06-15-04 REVISED PER CITY & DCSD COMMENTS
3	07-20-04 REVISED PER CITY COMMENTS
4	08-04-04 REVISED PER PWS/D2 COMMENTS
5	08-12-04 REVISED PER DEVELOPER COMMENTS
6	10-18-04 REVISED PER DEVELOPER COMMENTS
7	04-21-05 REVISED OUTFALL STRUCTURE 02
8	06-14-05 GRADING COMMENTS PER DEVELOPER

PREPARED FOR:
McBride & Son Homes Land Development, Inc.
 #1 McBride & Son Center Drive
 Chesterfield, Missouri 63005
 (636) 537-2000

PREPARED BY:
THE STERLING CO.
 ENGINEERS & SURVEYORS
 5065 NEW BRUNSWICK BLVD
 ST. LOUIS, MISSOURI 63112
 (314) 487-2440 FAX 487-8844
 E-Mail: Sterling@sterling-eng-sur.com

PROJECT:	NO. 03 06 147
DRAWN:	M.S.D.
DESIGNED:	SHEET 6
CHECKED:	OF 48
DIGITAL FILE LOCATION:	SERVER=STLBRG-3
	031408.dwg

THE UNDERGROUND UTILITIES SHOWN HEREON WERE PLOTTED FROM AVAILABLE INFORMATION AND DO NOT NECESSARILY REFLECT THE ACTUAL EXISTENCE, NONEXISTENCE, SIZE, TYPE, NUMBER OR LOCATION OF THESE OR OTHER UTILITIES. THE GENERAL CONTRACTOR SHALL BE RESPONSIBLE FOR VERIFYING THE ACTUAL LOCATION OF ALL UNDERGROUND UTILITIES SHOWN OR NOT SHOWN, AND SAID UTILITIES SHALL BE LOCATED IN THE FIELD PRIOR TO ANY GRADING, EXCAVATION OR CONSTRUCTION OF IMPROVEMENTS. THESE PROVISIONS SHALL IN NO WAY ABSOLVE ANY PARTY FROM COMPLYING WITH THE UNDERGROUND FACILITY SAFETY AND DAMAGE PREVENTION ACT, CHAPTER 319, RSMo.

BASE MAP