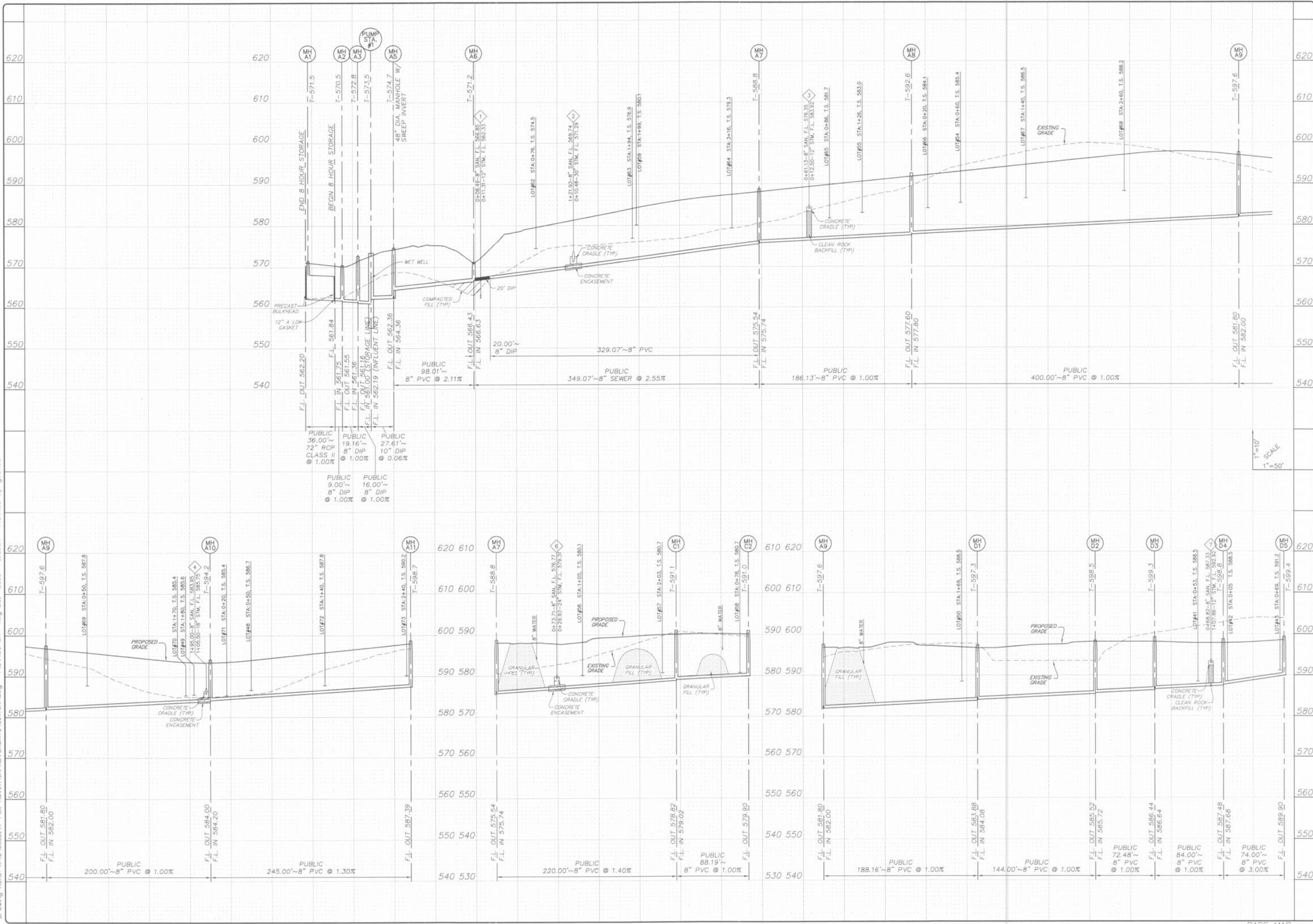


Drawing name: K:\D\0306147 Fox Haven\IMPROVEMENTS\6147IMP.dwg Plotted on Aug 23, 2005 - 11:30am Plotted by gastes



NO.	03	06	147
M.S.D.			SHEET
P#			13
DIGITAL FILE LOCATION	SERVER=STERLING-2		
DATE	11/18/07.dwg		
OF	48		

PROJECT: SANITARY SEWER PROFILES

SHEET TITLE: SANITARY SEWER PROFILES

PREPARED BY: MICHAEL J. STERLING, LICENSED PROFESSIONAL ENGINEER, MISSOURI REGISTERED PROFESSIONAL ENGINEER, E-29843

PREPARED FOR: McBride & Son Homes Land Development, Inc. #1 McBride & Son Center Drive Chesterfield, Missouri 63005 (636) 534-2000

REMARKS/DATE:

1	03-01-04	FIRST SUBMITTAL
2	06-15-04	REVISED PER CITY & DCSD COMMENTS
3	07-20-04	REVISED PER CITY COMMENTS
4	08-04-04	REVISED PER DCSD COMMENTS
5	08-12-04	REVISED PER PWS&D2 COMMENTS
6	10-18-04	REVISED PER DEVELOPER COMMENTS
7	04-21-05	REVISED OUTFALL STRUCTURE 02
8	06-14-05	GRADING COMMENTS PER DEVELOPER

BASE MAP