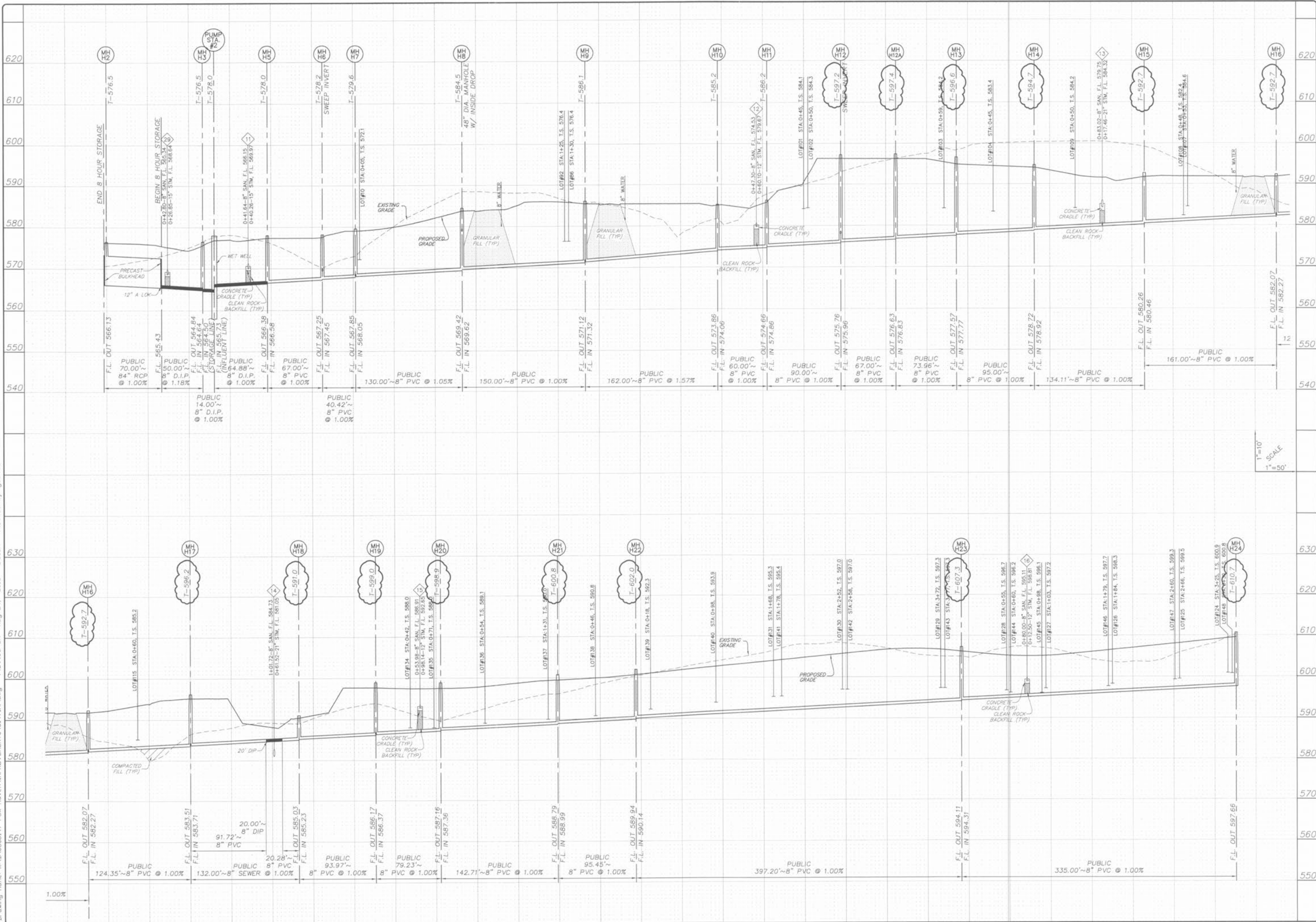


Drawing name: K:\AD\0306147 Fox Haven\IMPROVEMENTS\6147IMP.dwg Plotted on: Aug 24, 2005 - 8:50am Plotted by: gester



NO	03	06	147
M.S.D.			SHEET
P#			15
DIGITAL FILE LOCATION	SERVER=STERLING-2		OF
			48

PROJECT: FOX HAVEN
SHEET TITLE: SANITARY SEWER PROFILES

DESIGNED: _____
CHECKED: _____

PREPARED BY: THE STERLING CO. ENGINEERS & SURVEYORS
5955 NEW BALMARTNER ROAD
ST. LOUIS, MISSOURI 63129
(314) 487-0440 FAX 487-8844
E-Mail: Sterling@sterling-eng-sur.com

PREPARED FOR: McBride & Son Homes Land Development, Inc.
#1 McBride & Son Center Drive
Chesterfield, Missouri 63005
(636) 534-2000

ISSUE REMARKS/DATE
1 03-07-04 FIRST SUBMITTAL
2 06-15-04 REVISED PER CITY & DCSD COMMENTS
3 07-20-04 REVISED PER CITY COMMENTS
4 08-04-04 REVISED PER DCSD COMMENTS
5 08-12-04 REVISED PER PWS#2 COMMENTS
6 10-16-04 REVISED PER DEVELOPER COMMENTS
7 04-21-05 REVISED OUTFALL STRUCTURE 02
8 06-14-05 GRADING COMMENTS PER DEVELOPER

BASE MAP