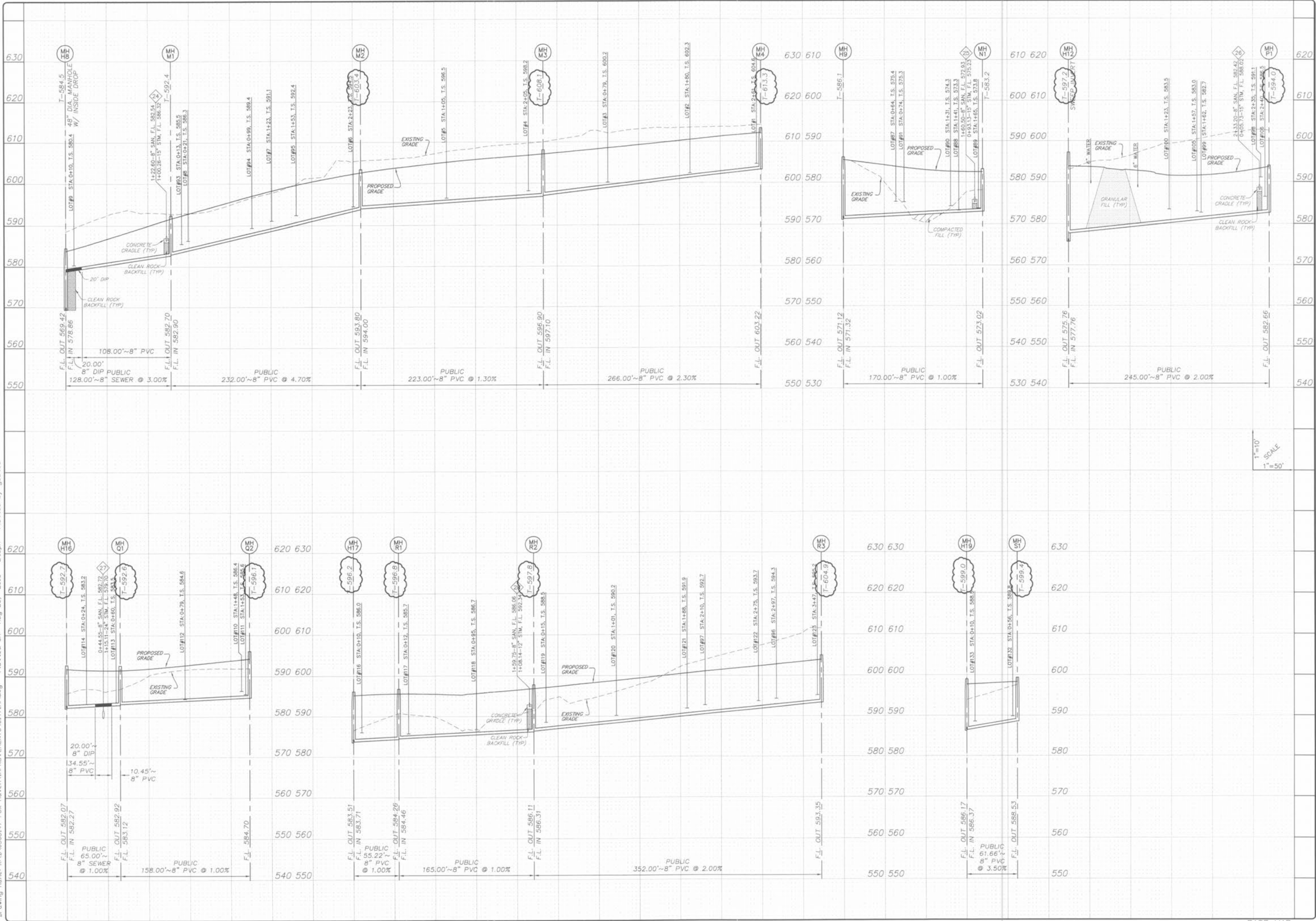


Drawing name: K:\D\0206147 Fox Haven\IMPROVEMENTS\6147\MP.dwg Plotted on: Aug 23, 2005 - 2:13pm Plotted by: gsteres



1"=10'
30'-SCALE
1"=50'

ISSUE	REMARKS/DATE
1	03-01-04 FIRST SUBMITTAL
2	05-15-04 REVISED PER CITY COMMENTS
3	07-25-04 REVISED PER CITY COMMENTS
4	08-04-04 REVISED PER DCSO COMMENTS
5	08-12-04 REVISED PER PWS&Z COMMENTS
6	10-16-04 REVISED PER DEVELOPER COMMENTS
7	04-21-05 REVISED OUTFALL STRUCTURE 02
8	06-14-05 GRADING COMMENTS PER DEVELOPER

PREPARED FOR:
McBride & Son Homes, Inc.
Land Development, Inc.
 #1 McBride & Son Center Drive
 Chesterfield, Missouri 63005
 (636) 534-2000



PREPARED BY:
THE STERLING CO.
ENGINEERS & SURVEYORS
 5055 NEW BALMGARTNER ROAD
 ST. LOUIS, MISSOURI 63129
 (314) 487-0440 FAX 487-8844
 E-Mail: Sterling@sterling-eng-sur.com

PROJECT:	NO. 03 06 147
DRAWN:	M.S.D. SHEET
DESIGNED:	P# 17
CHECKED:	DIGITAL FILE LOCATION: SURFER=STERLING-2
	OF 48

SHEET TITLE: SANITARY SEWER PROFILES

BASE MAP