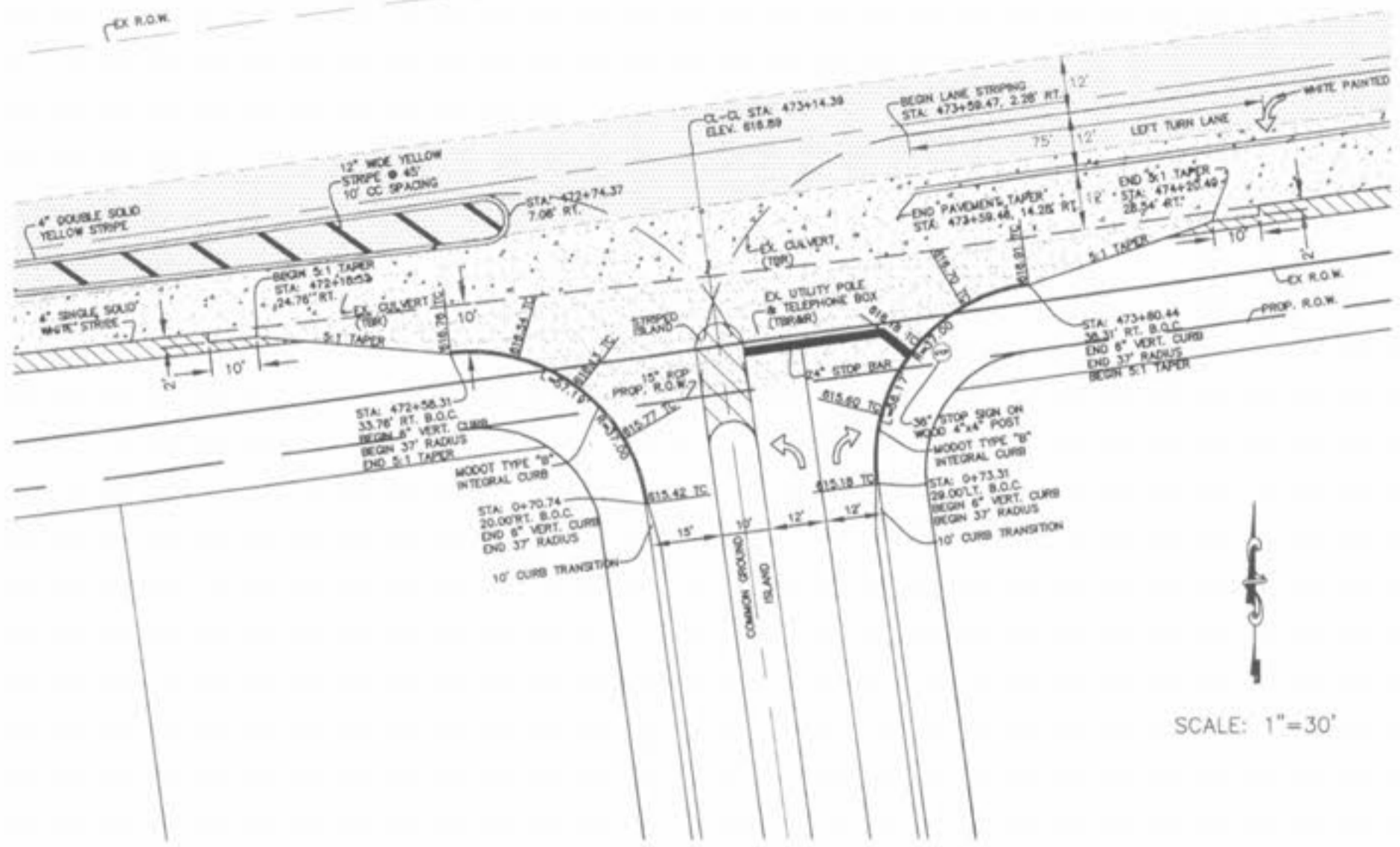
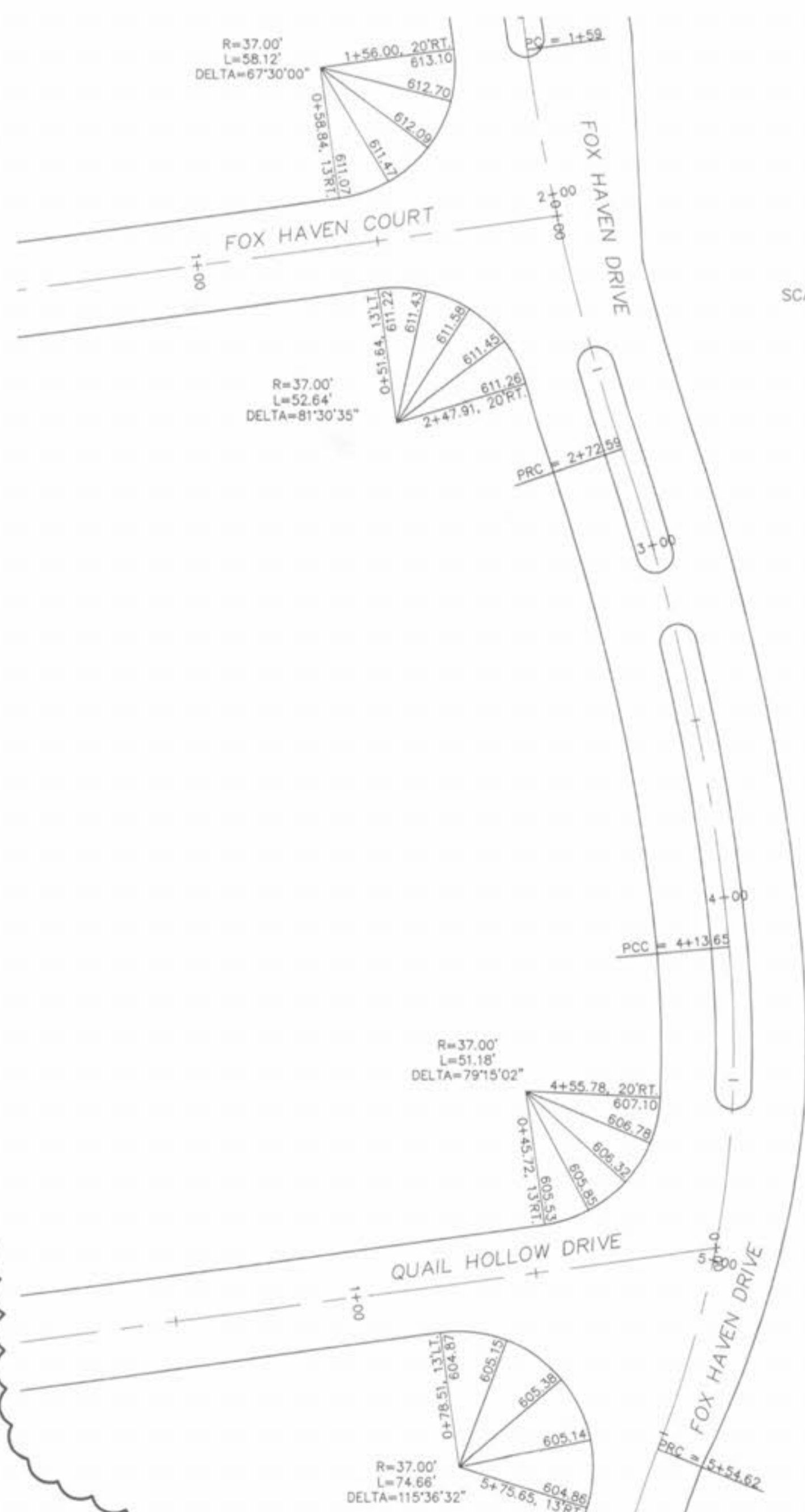


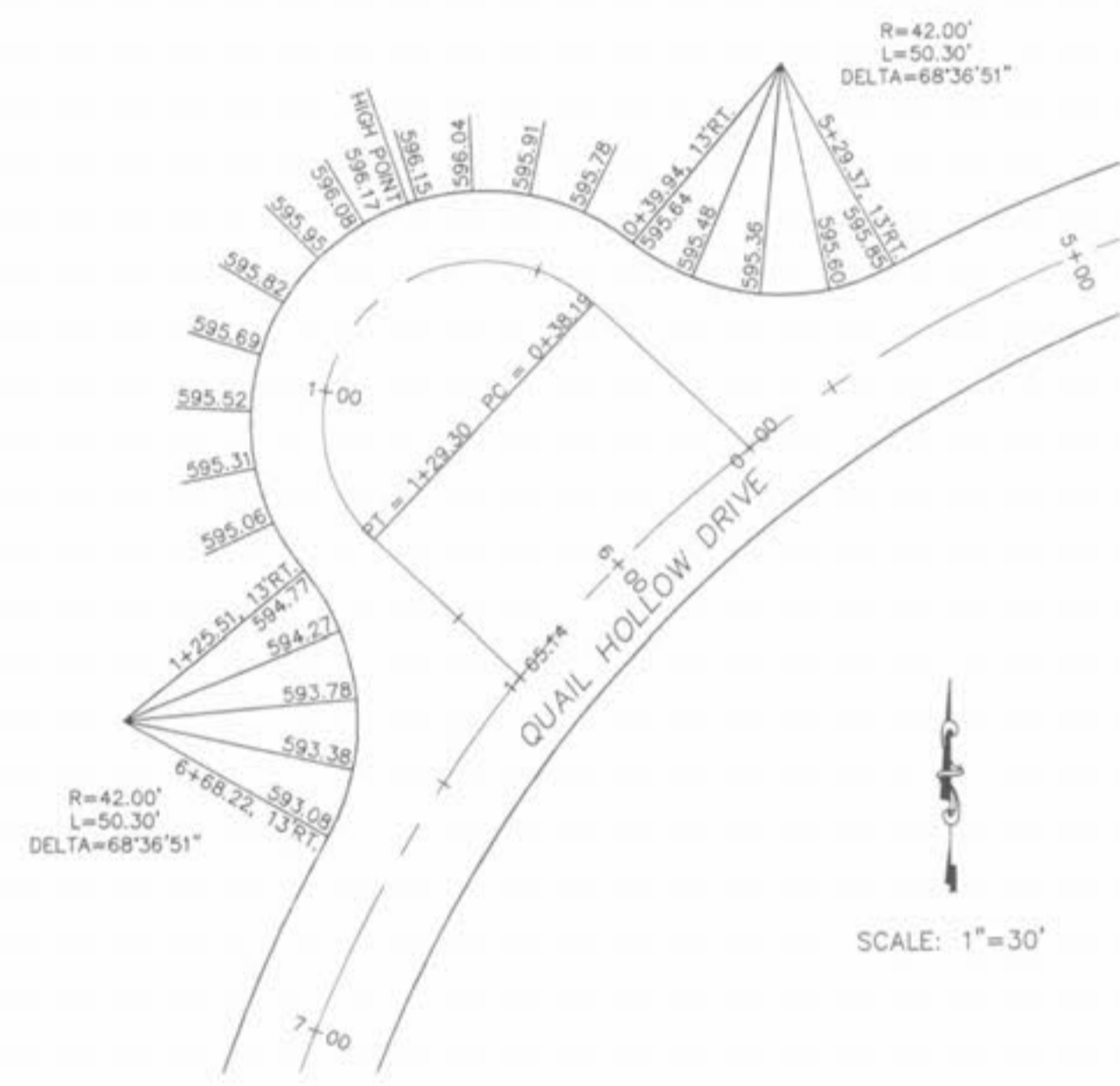
Drawing name: K:\D\0306147 Fox Haven\MP\PROVIDEMENTS\6147IMP.dwg Plotted on: Aug 23, 2005 - 2:08pm Plotted by: gastes



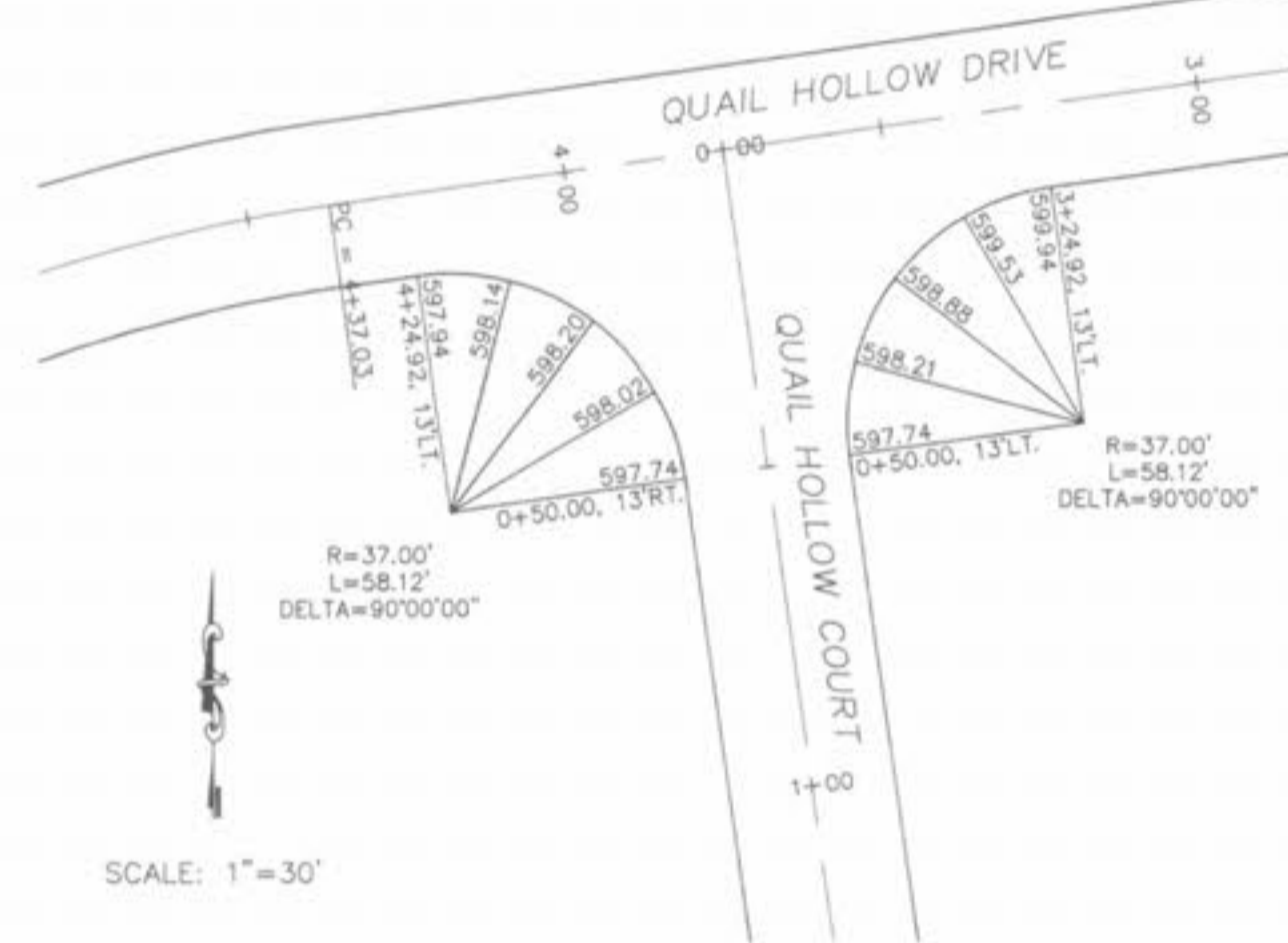
SCALE: 1"=30'



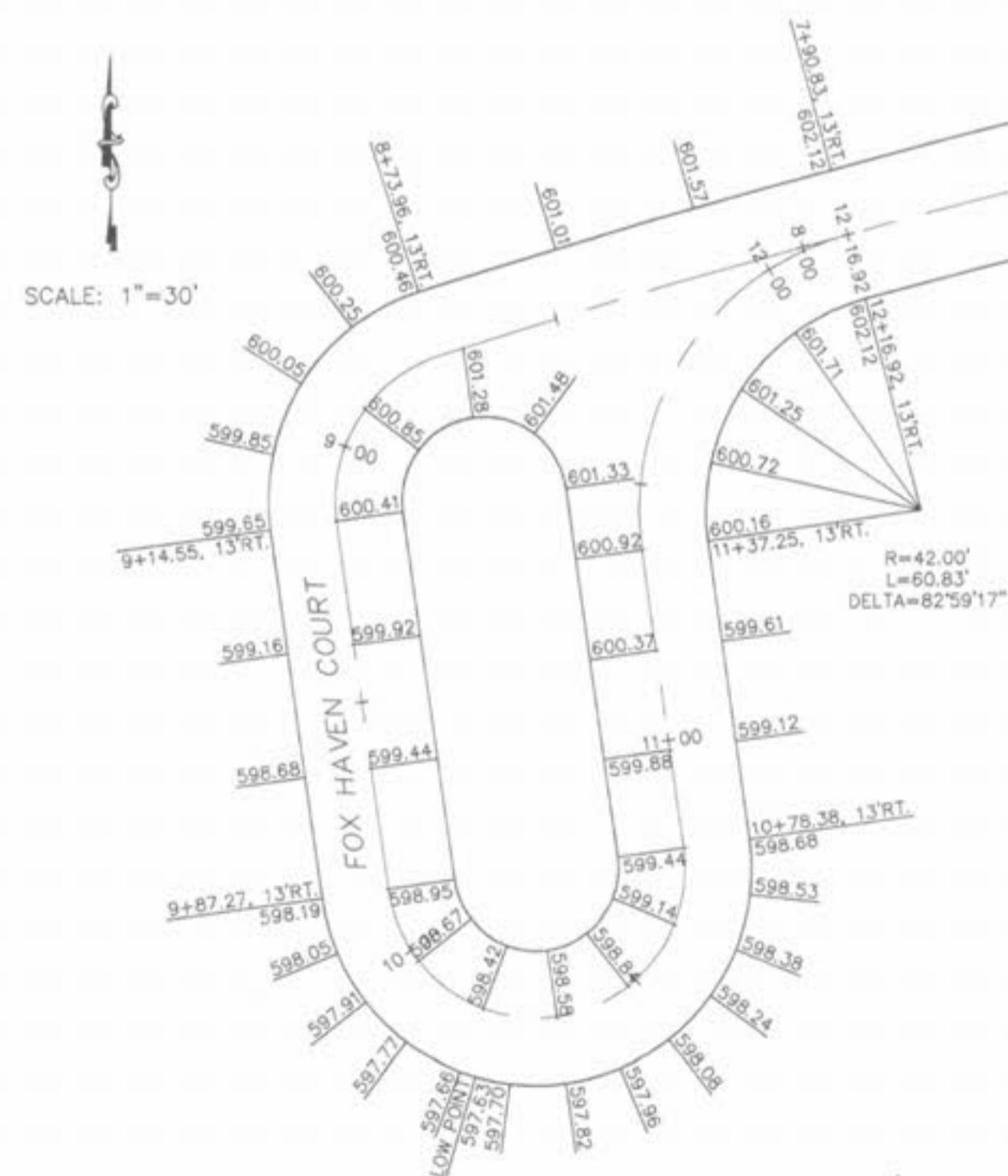
SCALE: 1"=30'



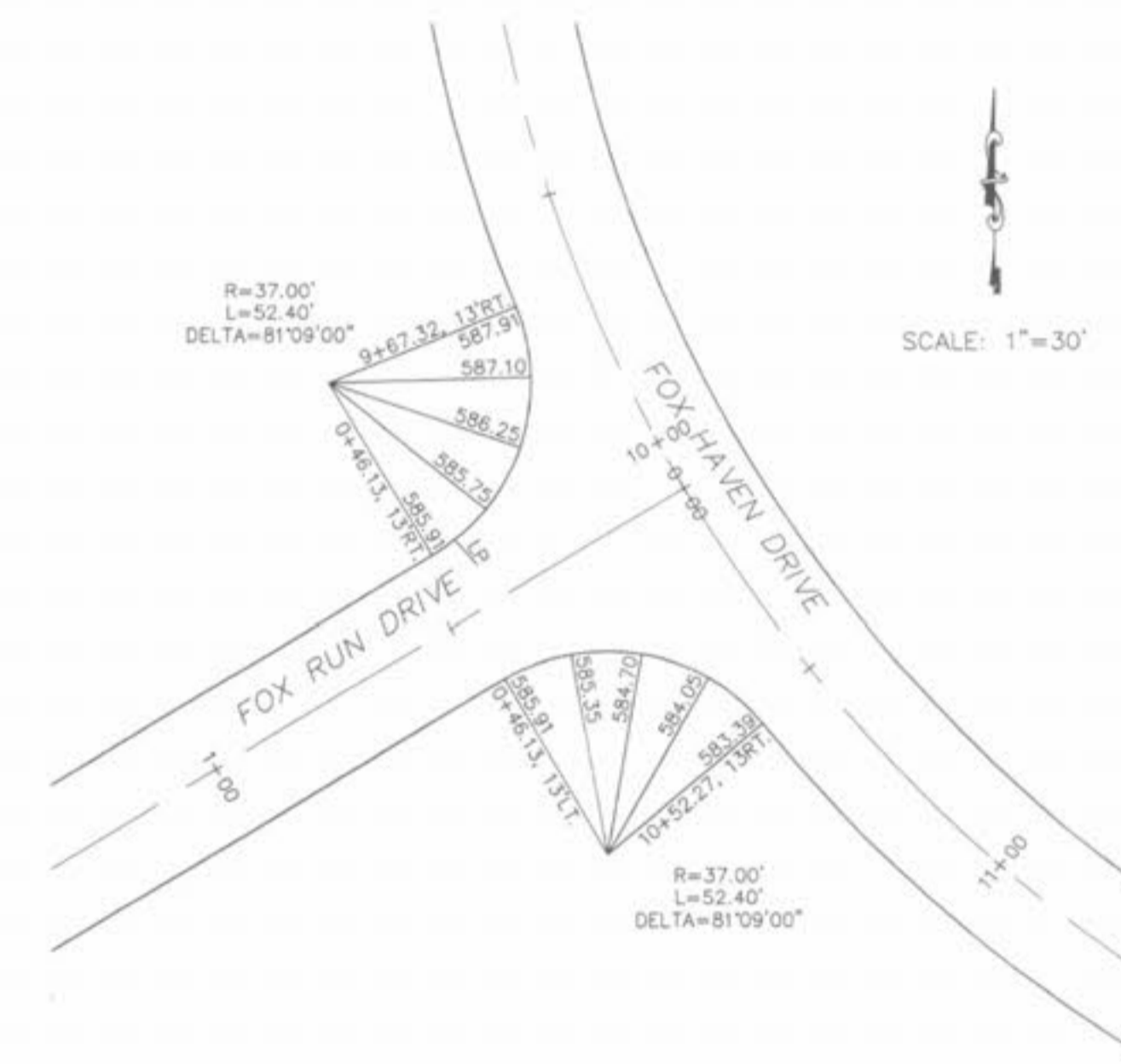
SCALE: 1"=30'



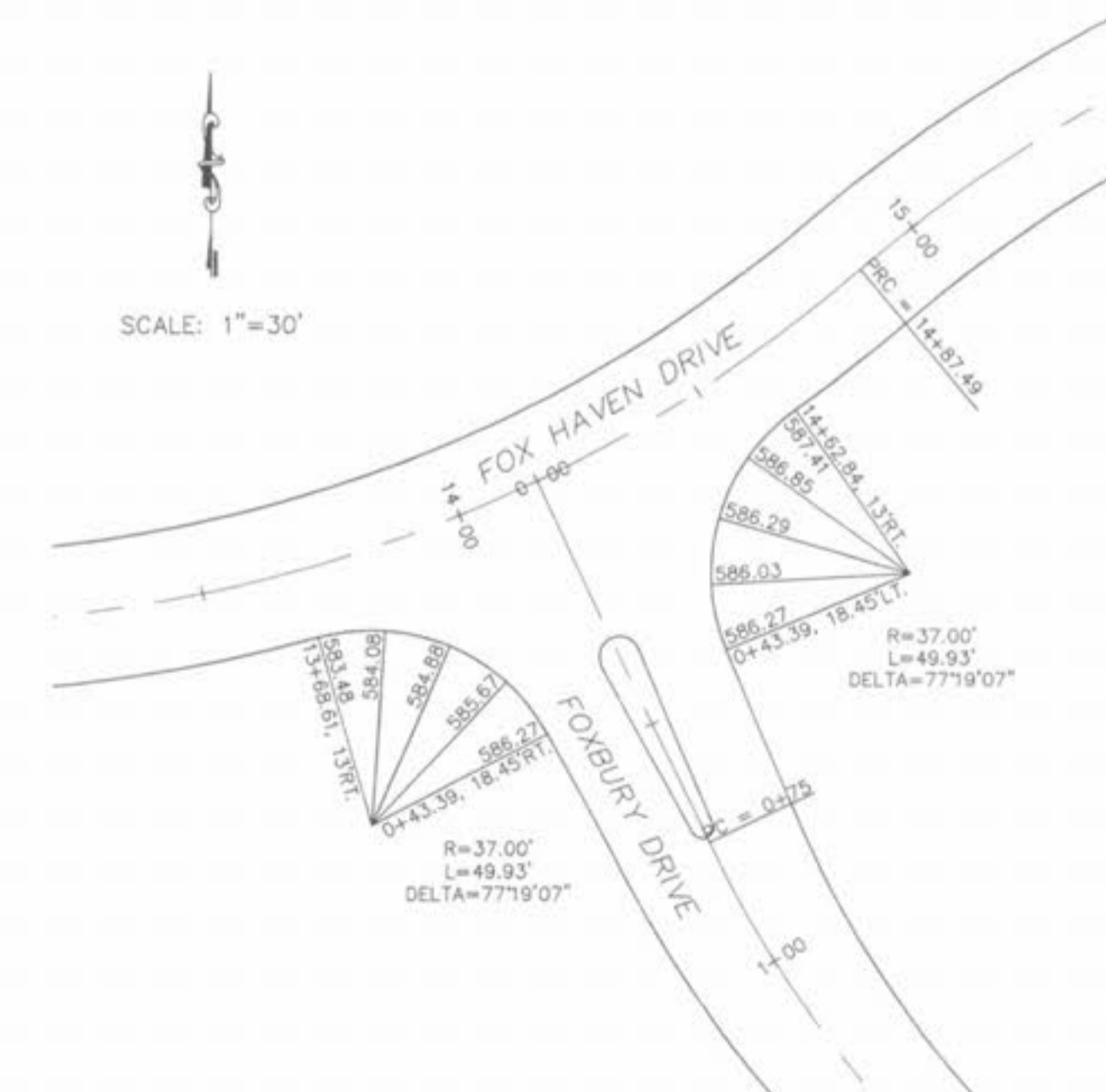
SCALE: 1"=30'



SCALE: 1"=30'



SCALE: 1"=30'



SCALE: 1"=30'

BASE MAP

ISSUE	REMARKS/DATE
1	03-07-04 FIRST SUBMITTAL
2	06-15-04 REVISED PER CITY COMMENTS
3	07-20-04 REVISED PER CITY COMMENTS
4	08-04-04 REVISED PER CITY COMMENTS
5	08-12-04 REVISED PER PWS/DW COMMENTS
6	10-18-04 REVISED PER PWS/DW COMMENTS
7	04-21-05 REVISED OUTFALL STRUCTURE 02
8	06-14-05 GRADING COMMENTS PER DEVELOPER

PREPARED FOR:  
**McBride & Son Homes  
 Land Development, Inc.**  
 #1 McBride & Son Center Drive  
 Chesterfield, Missouri 63005  
 (636) 537-2000



PREPARED BY:  
**THE STERLING CO.**  
 ENGINEERS & SURVEYORS  
 5055 NEW BALMGARTNER ROAD  
 ST. LOUIS, MISSOURI 63129  
 (314) 487-0440 FAX 487-8944  
 E-Mail: Sterling@sterling-eng-survey.com

PROJECT:	DESIGNED:	CHECKED:
<b>FOX HAVEN</b>		
SHEET TITLE:	WARPING DETAILS	

NO.	03	06	147
M.S.D.			
PR			
DIGITAL FILE LOCATION:	K:\D\0306147\MP\PROVIDEMENTS\6147IMP.dwg		
SHEET	29	OF 48	