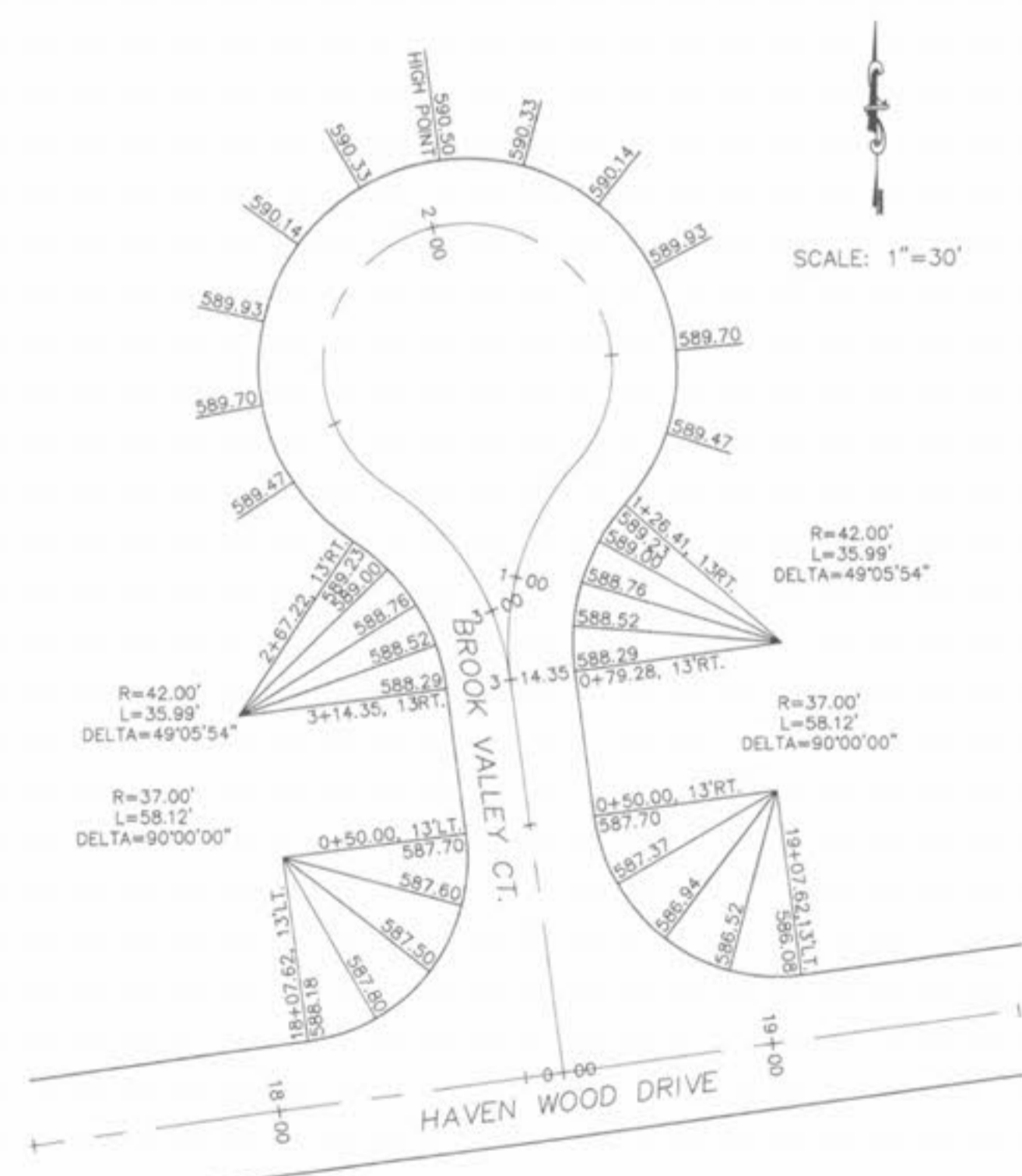
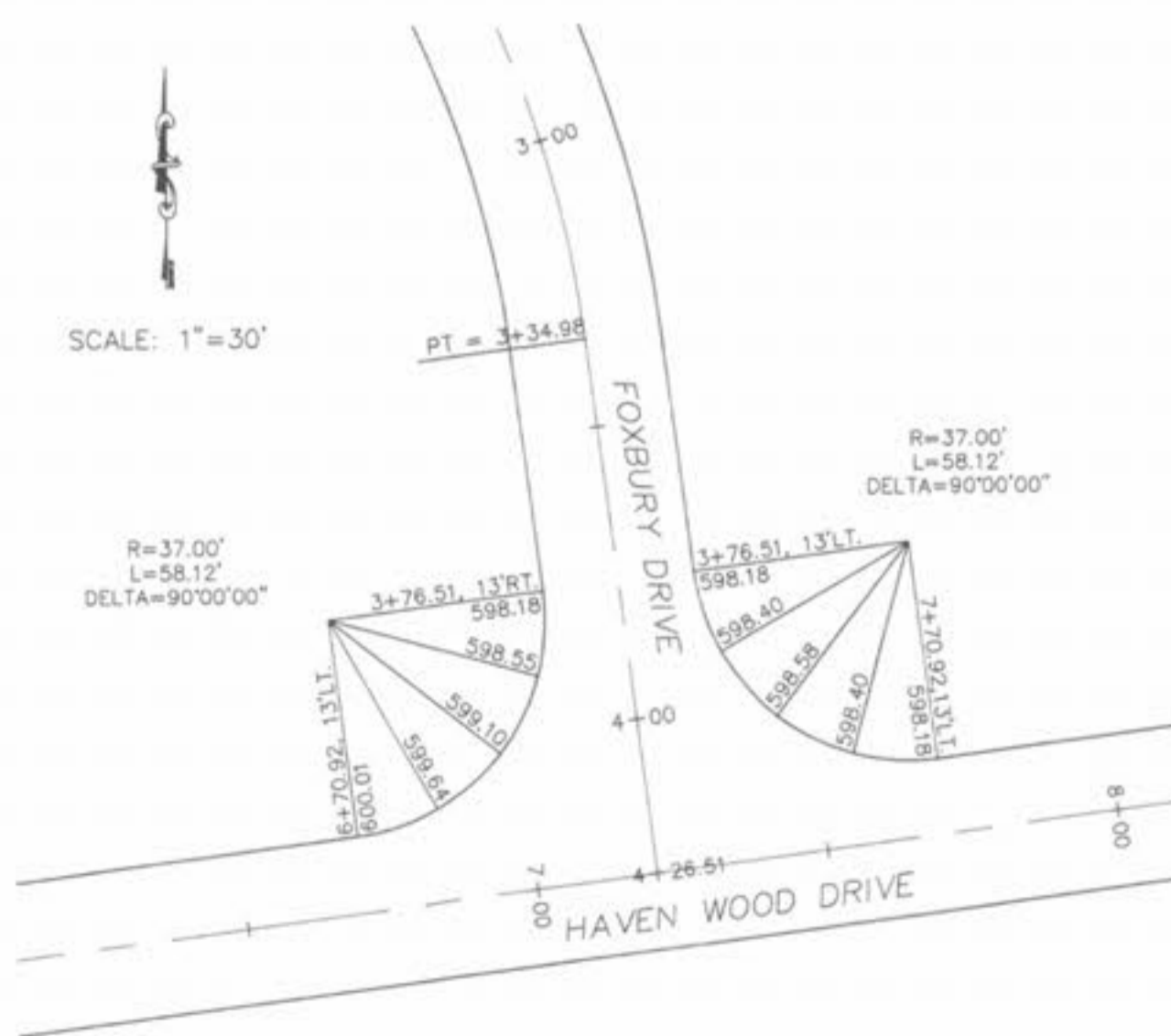
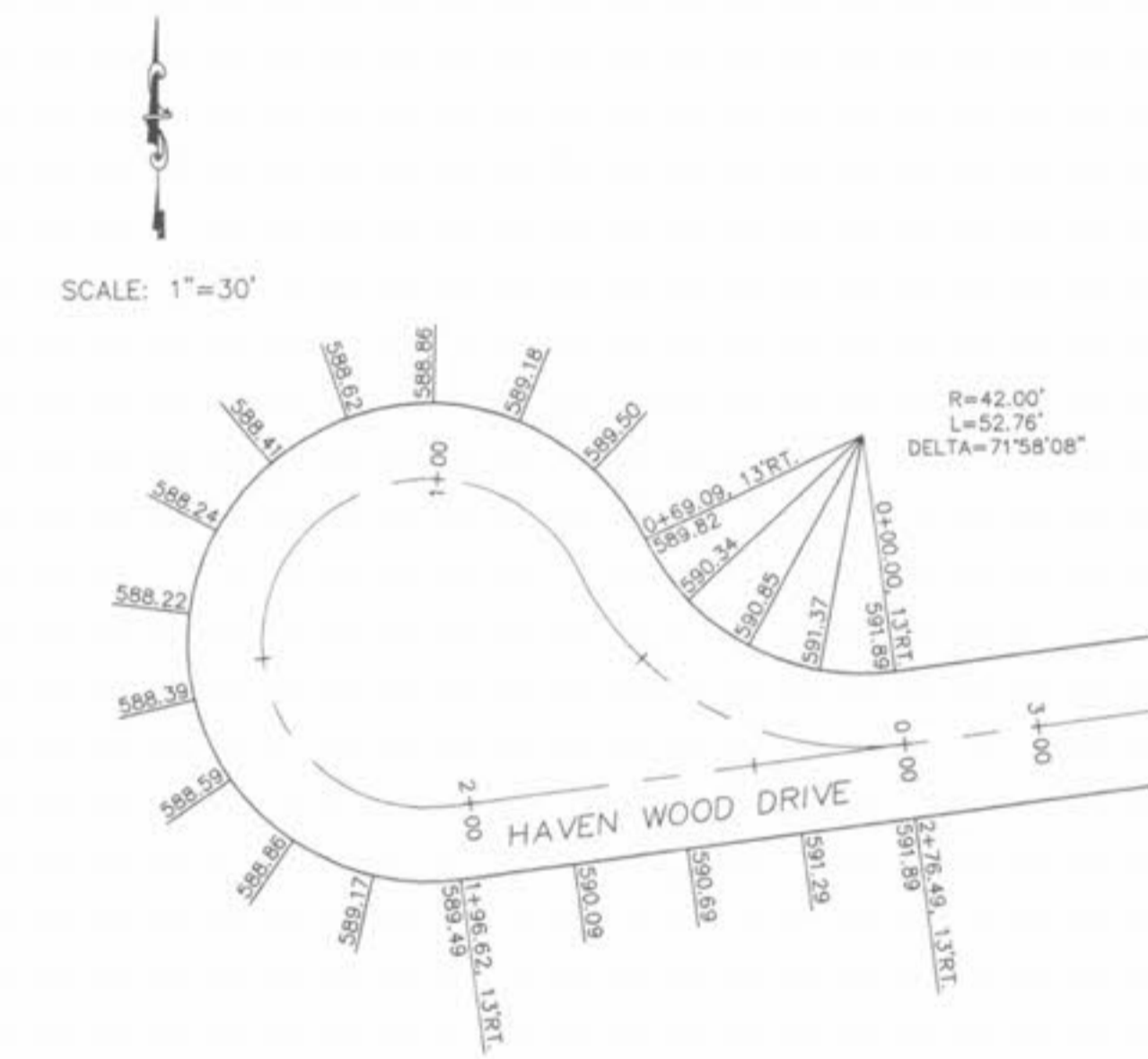
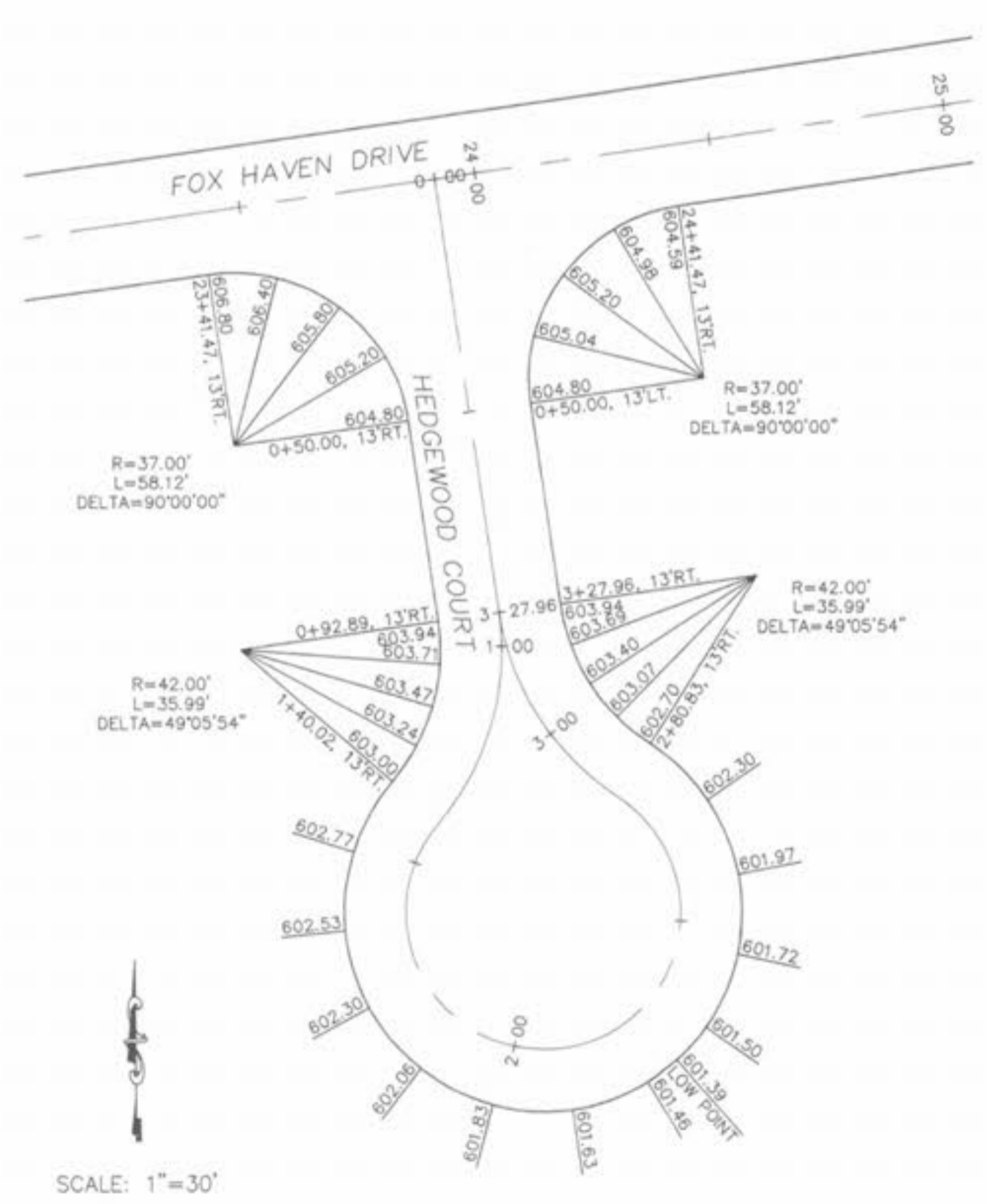
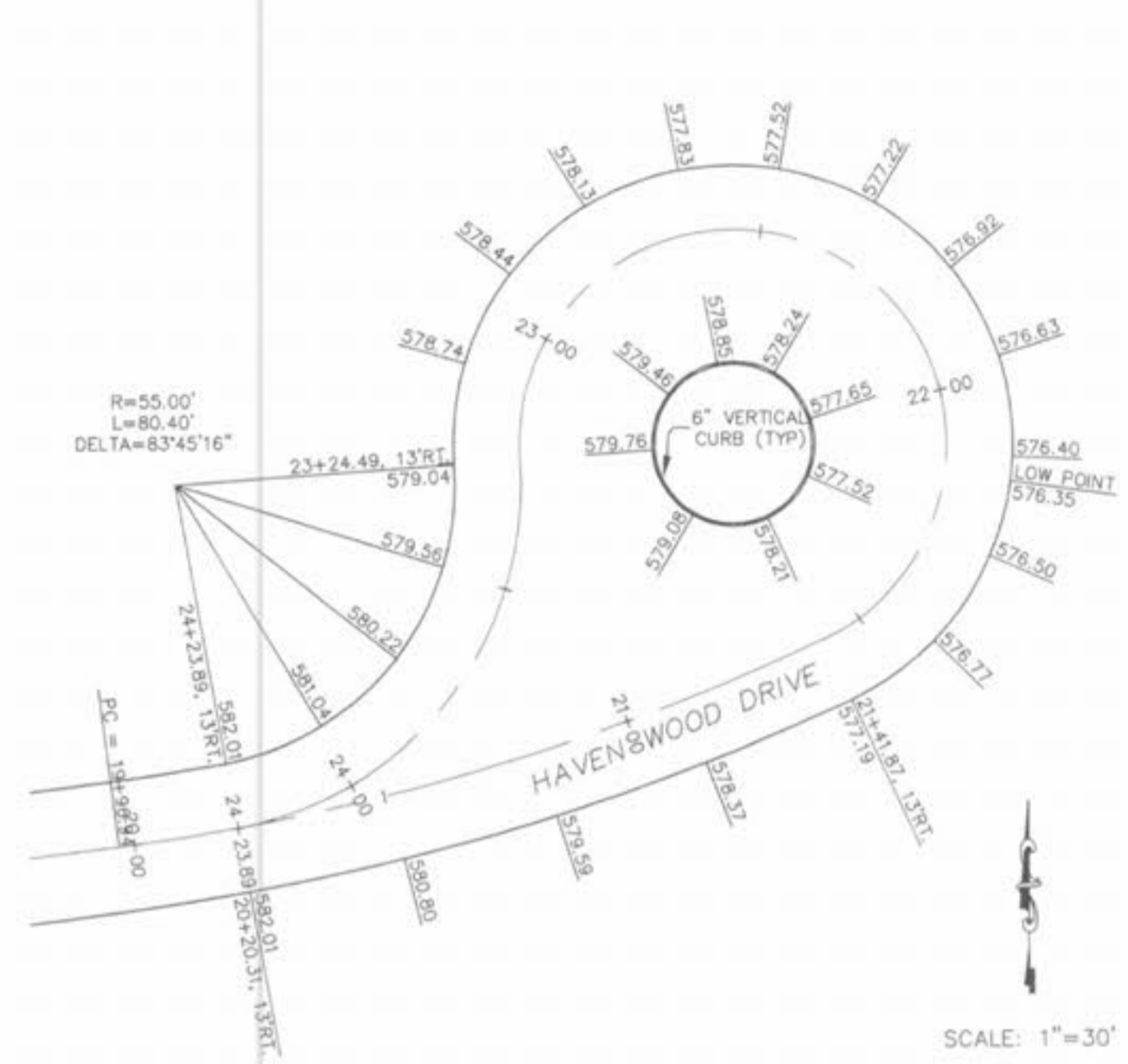
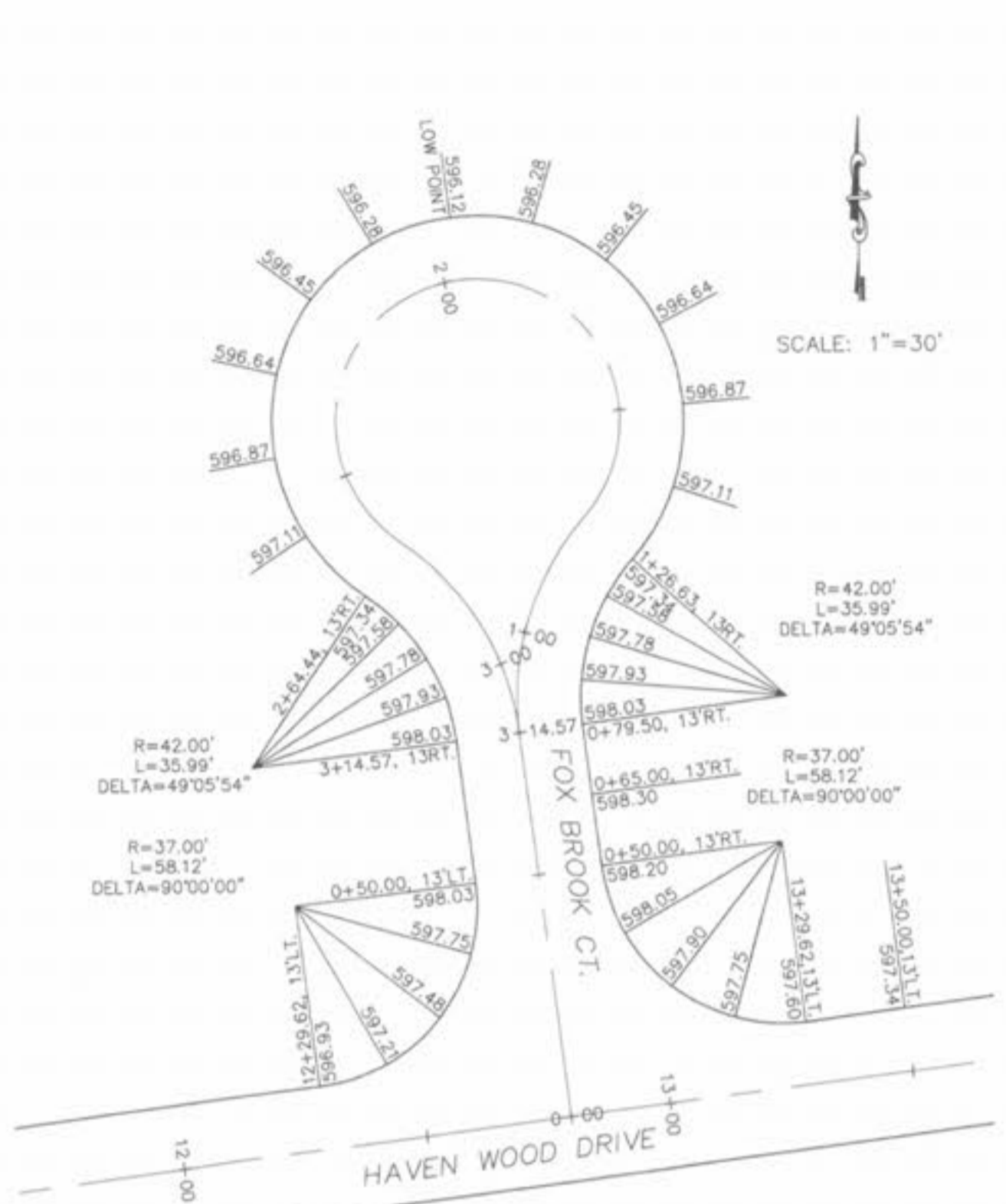
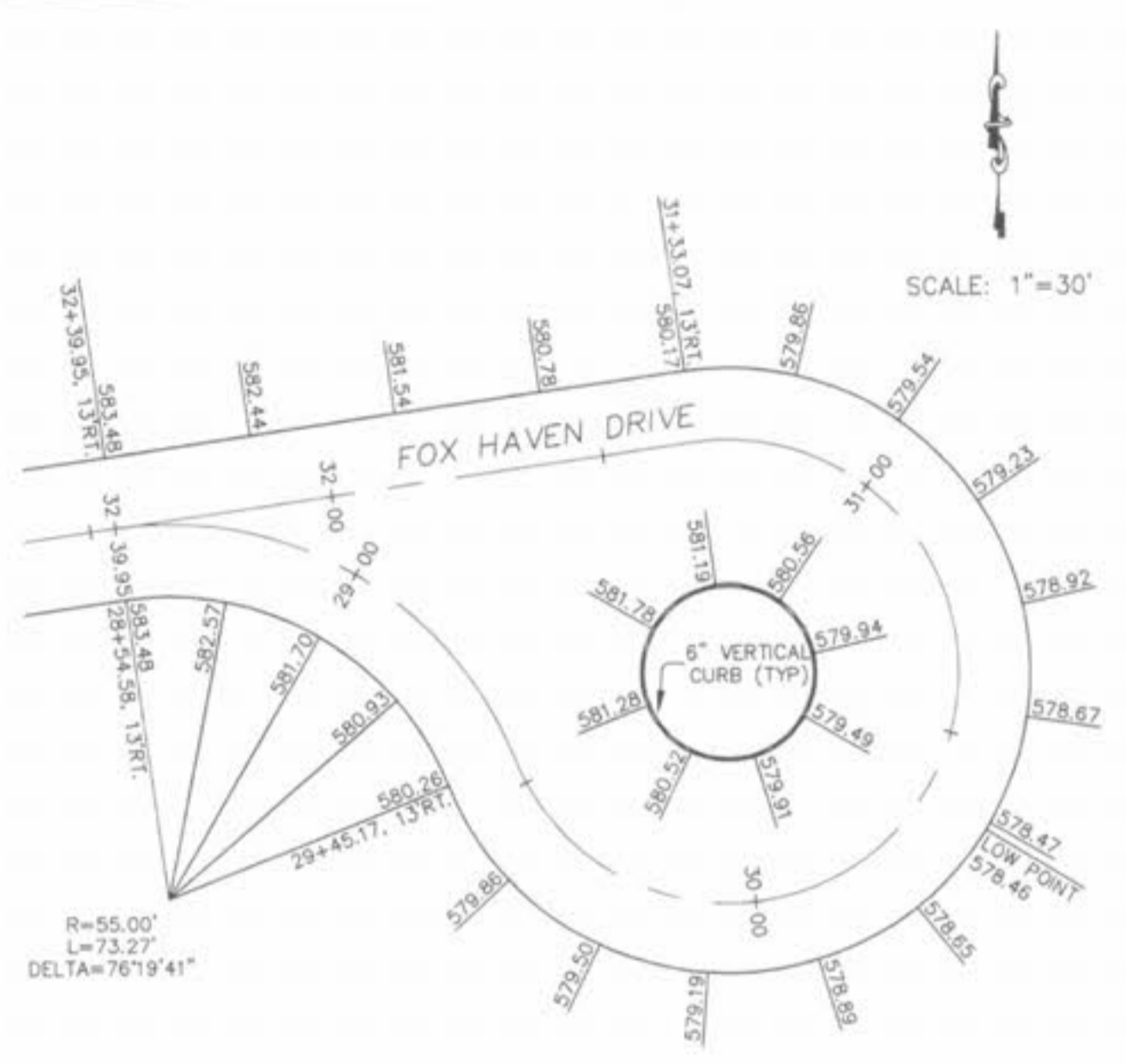
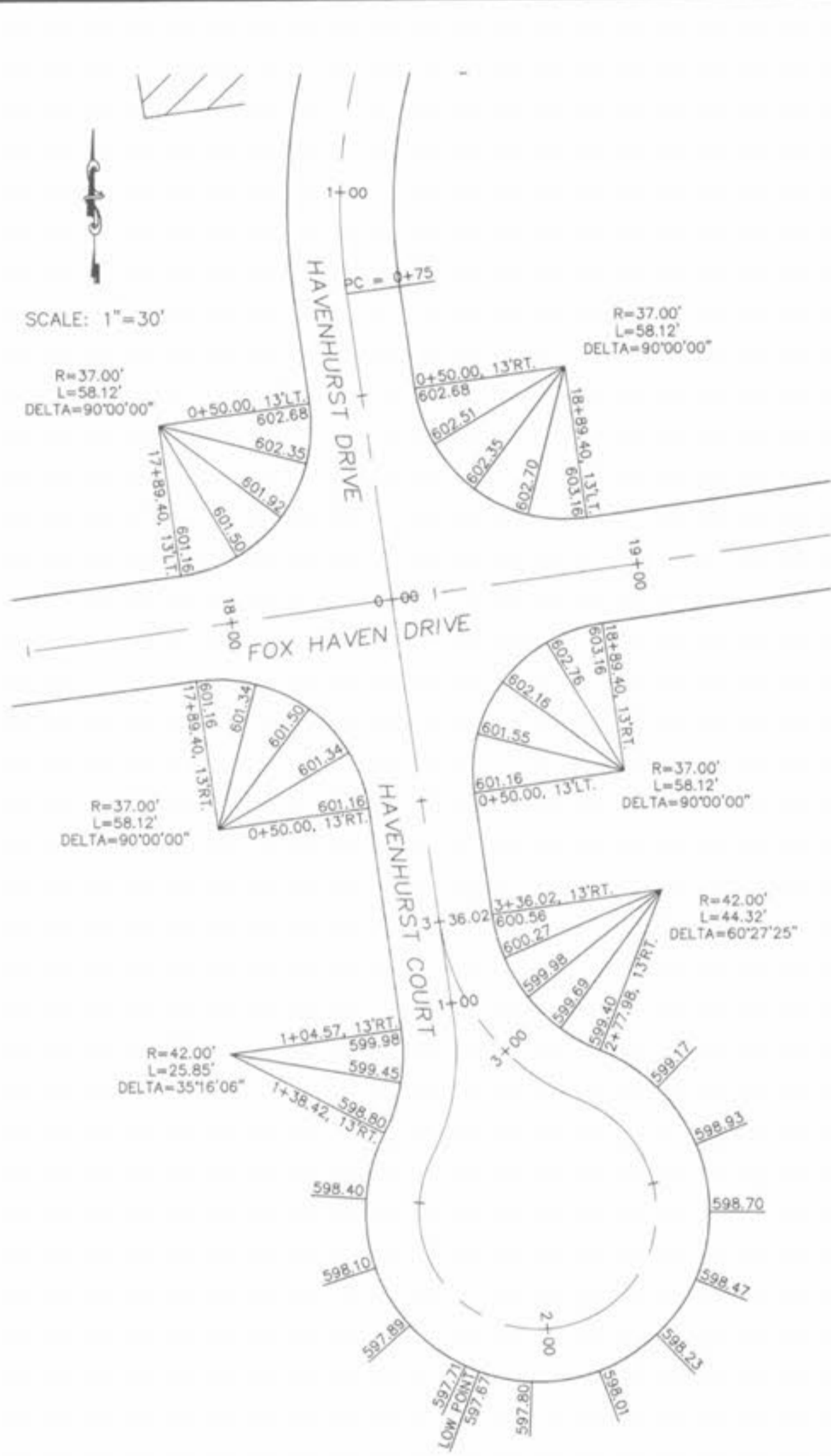


Drawing name: K:\D\0306147 Fox Haven\IMPROVEMENTS\6147\IMP.dwg Plotted on: Aug 23, 2005 - 11:21am Plotted by: gester



ISSUE REMARKS/DATE

1	03-01-04	FIRST SUBMITTAL
2	06-15-04	REVISED PER CITY COMMENTS
3	07-20-04	REVISED PER CITY COMMENTS
4	08-04-04	REVISED PER CITY COMMENTS
5	08-12-04	REVISED PER PWS&Z COMMENTS
6	10-18-04	REVISED PER DEVELOPER COMMENTS
7	04-21-05	REVISED OUTFALL STRUCTURE 02
8	06-14-05	GRADING COMMENTS PER DEVELOPER

PREPARED FOR:
McBride & Son Homes
 Land Development, Inc.
 #1 McBride & Son Center Drive
 Chesterfield, Missouri 63005
 (636) 537-2000



PREPARED BY:
THE STERLING CO.
 ENGINEERS & SURVEYORS
 5085 NEW BAUMGARTNER ROAD
 ST. LOUIS, MISSOURI 63129
 (314) 487-0440 FAX 487-8844
 E-Mail: Sterling@sterling-eng-sur.com

PROJECT:	FOX HAVEN	
DRAWN:	DESIGNED:	CHECKED:
SHEET TITLE: WARPING DETAILS		

NO	03	06	147
M.S.D.			SHEET
P#	30		OF
DIGITAL FILE LOCATION: SERVER=STERLING-2 C:\P\0306147.dwg			
OF 48			

BASE MAP