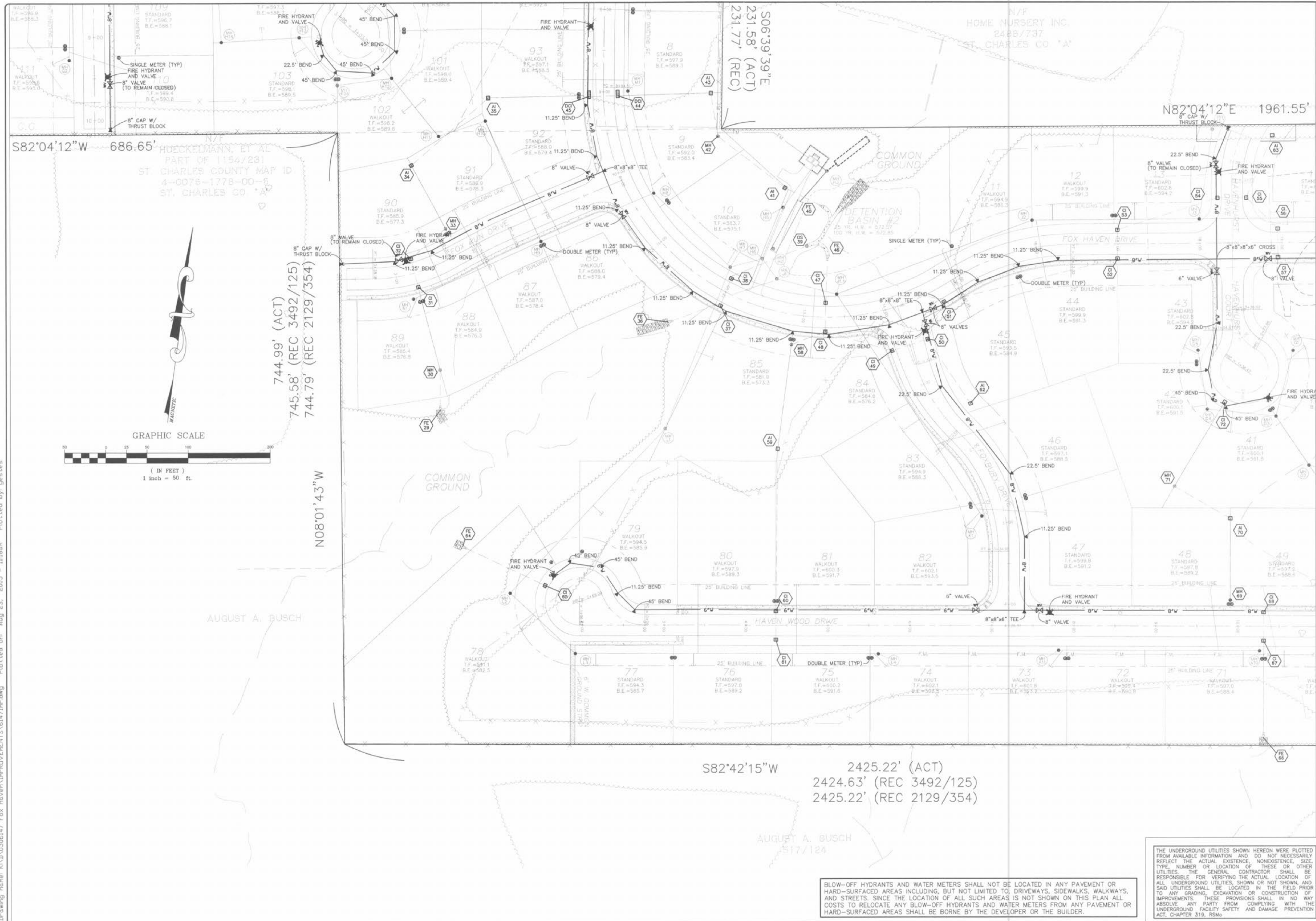


Drawing name: K:\D\0306147 Fox Haven\IMPROVEMENTS\19147IMP.dwg Plotted on: Aug 23, 2005 - 11:18am Plotted by: gester



BLOW-OFF HYDRANTS AND WATER METERS SHALL NOT BE LOCATED IN ANY PAVEMENT OR HARD-SURFACED AREAS INCLUDING, BUT NOT LIMITED TO, DRIVEWAYS, SIDEWALKS, WALKWAYS, AND STREETS. SINCE THE LOCATION OF ALL SUCH AREAS IS NOT SHOWN ON THIS PLAN ALL COSTS TO RELOCATE ANY BLOW-OFF HYDRANTS AND WATER METERS FROM ANY PAVEMENT OR HARD-SURFACED AREAS SHALL BE BORNE BY THE DEVELOPER OR THE BUILDER.

THE UNDERGROUND UTILITIES SHOWN HEREON WERE PLOTTED FROM AVAILABLE INFORMATION AND DO NOT NECESSARILY REFLECT THE ACTUAL EXISTENCE, NONEXISTENCE, SIZE, TYPE, NUMBER OR LOCATION OF THESE OR OTHER UTILITIES. THE GENERAL CONTRACTOR SHALL BE RESPONSIBLE FOR VERIFYING THE ACTUAL LOCATION OF ALL UNDERGROUND UTILITIES, SHOWN OR NOT SHOWN, AND SAID UTILITIES SHALL BE LOCATED IN THE FIELD PRIOR TO ANY GRADING, EXCAVATION OR CONSTRUCTION OF IMPROVEMENTS. THESE PROVISIONS SHALL IN NO WAY ABSOLVE ANY PARTY FROM COMPLYING WITH THE UNDERGROUND FACILITY SAFETY AND DAMAGE PREVENTION ACT, CHAPTER 319, RSMo.

ISSUE	REMARKS/DATE
1	03-01-04 FIRST SUBMITTAL
2	06-15-04 REVISED PER CITY & DCSD COMMENTS
3	07-20-04 REVISED PER CITY COMMENTS
4	08-04-04 REVISED PER CITY COMMENTS
5	08-12-04 REVISED PER PWS&D COMMENTS
6	10-18-04 REVISED PER DEVELOPER COMMENTS
7	04-21-05 REVISED OUTFALL STRUCTURE 02
8	06-14-05 GRADING COMMENTS PER DEVELOPER

PREPARED FOR:

**McBride & Son Homes
Land Development, Inc.**
#1 McBride & Son Center Drive
Chesterfield, Missouri 63005
(636) 537-2000

PREPARED BY:

THE STERLING CO.
ENGINEERS & SURVEYORS
5655 NEW BAUMGARTNER ROAD
ST. LOUIS, MISSOURI 63112
(314) 487-0440 FAX 487-8844
E-Mail: Sterling@sterling-eng.com

PROJECT: **FOX HAVEN**

DRAWN: _____ DESIGNED: _____ CHECKED: _____

SHEET TITLE: **WATER DISTRIBUTION PLANS**

NO.	03	06	147
M.S.D.			
FF#			
SPECIAL FILE LOCATION			
33			
OF			48

BASE MAP