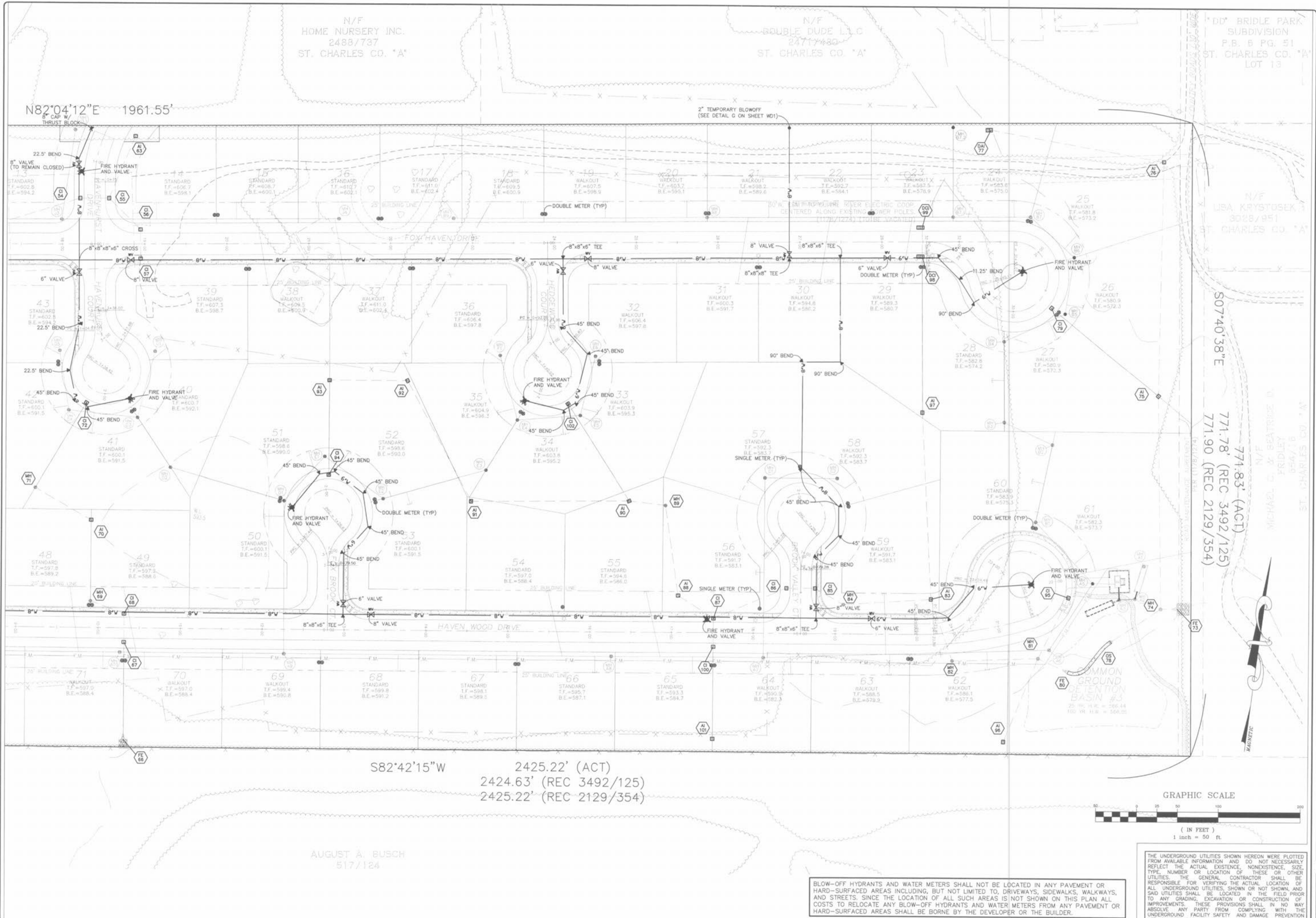


Drawing name: K:\D\0306147 Fox Haven\IMPROVEMENTS\6147IMP.dwg Plotted on Aug 23, 2005 - 11:08am Plotted by: gester



N/F HOME NURSERY INC. 2488/737 ST. CHARLES CO. 'A'

N/F DOUBLE DUDE L.L.C 24717430 ST. CHARLES CO. 'A'

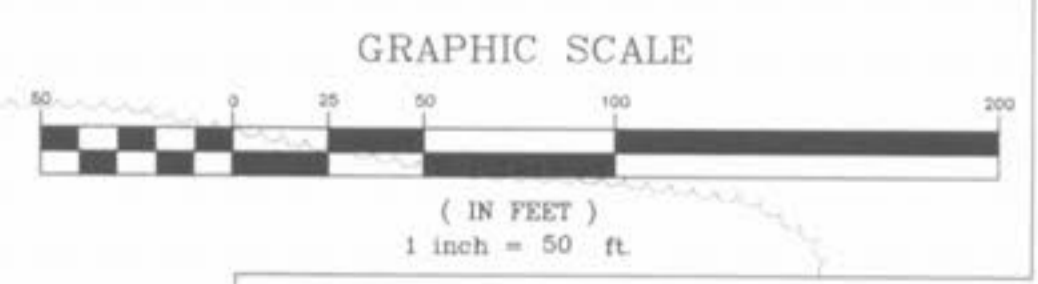
'DD' BRIDLE PARK SUBDIVISION P.B. 6 PG. 51 ST. CHARLES CO. 'A' LOT 13

N82°04'12"E 1961.55'

S07°40'38"E

S82°42'15"W 2425.22' (ACT) 2424.63' (REC 3492/125) 2425.22' (REC 2129/354)

AUGUST A. BUSCH 517/124



BLOW-OFF HYDRANTS AND WATER METERS SHALL NOT BE LOCATED IN ANY PAVEMENT OR HARD-SURFACED AREAS INCLUDING, BUT NOT LIMITED TO, DRIVEWAYS, SIDEWALKS, WALKWAYS, AND STREETS. SINCE THE LOCATION OF ALL SUCH AREAS IS NOT SHOWN ON THIS PLAN ALL COSTS TO RELOCATE ANY BLOW-OFF HYDRANTS AND WATER METERS FROM ANY PAVEMENT OR HARD-SURFACED AREAS SHALL BE BORNE BY THE DEVELOPER OR THE BUILDER.

THE UNDERGROUND UTILITIES SHOWN HEREON WERE PLOTTED FROM AVAILABLE INFORMATION AND DO NOT NECESSARILY REFLECT THE ACTUAL EXISTENCE, NONEXISTENCE, SIZE, TYPE, NUMBER OR LOCATION OF THESE OR OTHER UTILITIES. THE GENERAL CONTRACTOR SHALL BE RESPONSIBLE FOR VERIFYING THE ACTUAL LOCATION OF ALL UNDERGROUND UTILITIES, SHOWN OR NOT SHOWN, AND SAID UTILITIES SHALL BE LOCATED IN THE FIELD PRIOR TO ANY GRADING, EXCAVATION OR CONSTRUCTION OF IMPROVEMENTS. THESE PROVISIONS SHALL IN NO WAY ABSOLVE ANY PARTY FROM COMPLYING WITH THE UNDERGROUND FACILITY SAFETY AND DAMAGE PREVENTION ACT, CHAPTER 319, RSMo

ISSUE	REMARKS/DATE
1	03-07-04 FIRST SUBMITTAL
2	06-15-04 REVISED PER CITY & DCSD COMMENTS
3	07-20-04 REVISED PER CITY COMMENTS
4	08-04-04 REVISED PER CITY COMMENTS
5	08-12-04 REVISED PER PWS&R COMMENTS
6	10-18-04 REVISED PER DEVELOPER COMMENTS
7	04-21-05 REVISED OUTFALL STRUCTURE 02
8	06-14-05 GRADING COMMENTS PER DEVELOPER

PREPARED FOR:
McBride & Son Homes Land Development, Inc.
 #1 McBride & Son Center Drive
 Chesterfield, Missouri 63005
 (636) 537-2000



PREPARED BY:
THE STERLING CO.
 ENGINEERS & SURVEYORS
 5065 NEW BAUMGARTNER ROAD
 ST. LOUIS, MISSOURI 63129
 (314) 447-4844
 E-Mail: Sterling@sterling-eng-survey.com

PROJECT:	DESIGNED:	CHECKED:
NO. 03 06 147		
M.S.D.		
P#		
SHEET 34		
OF 48		

BASE MAP