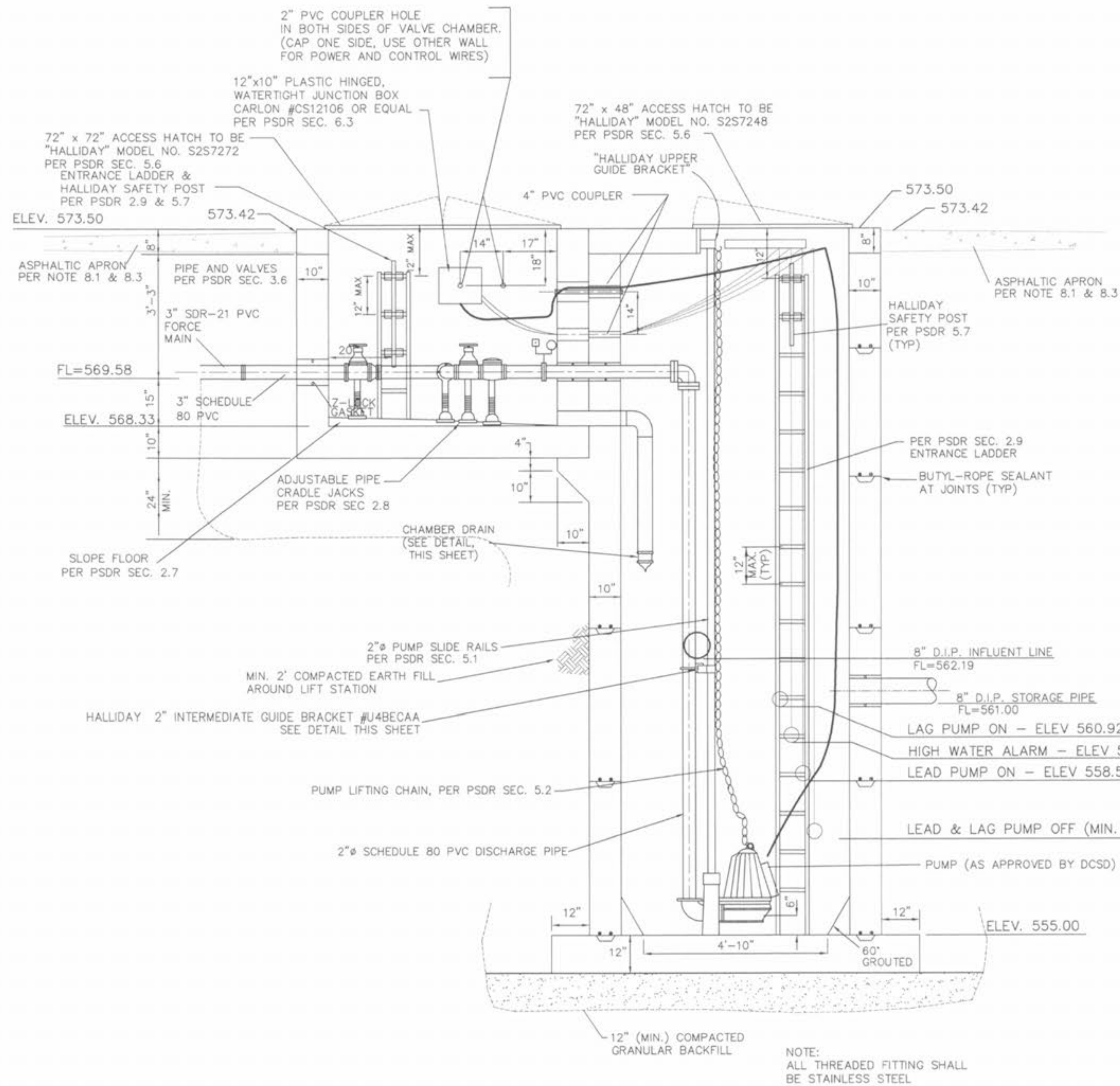
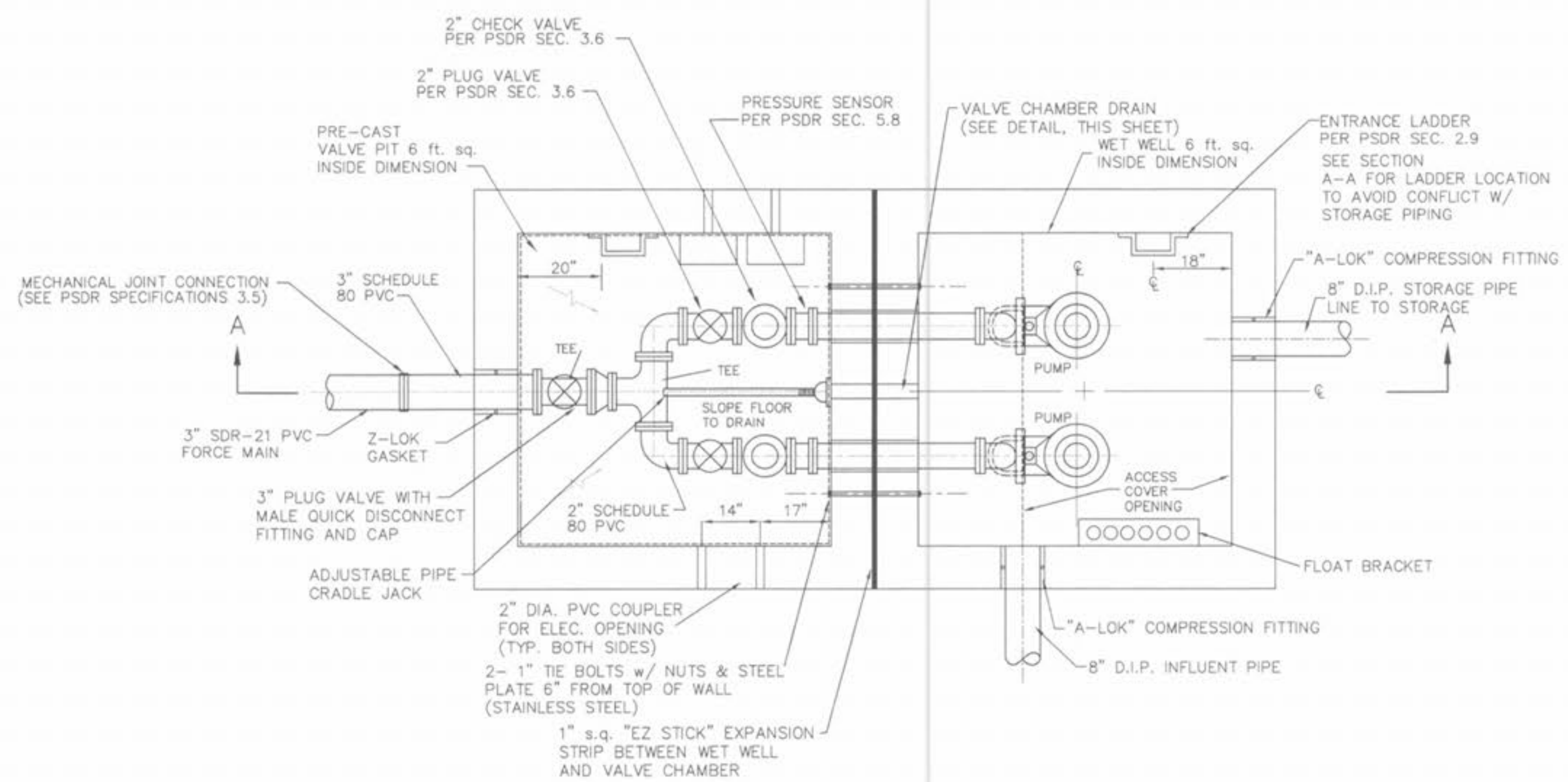


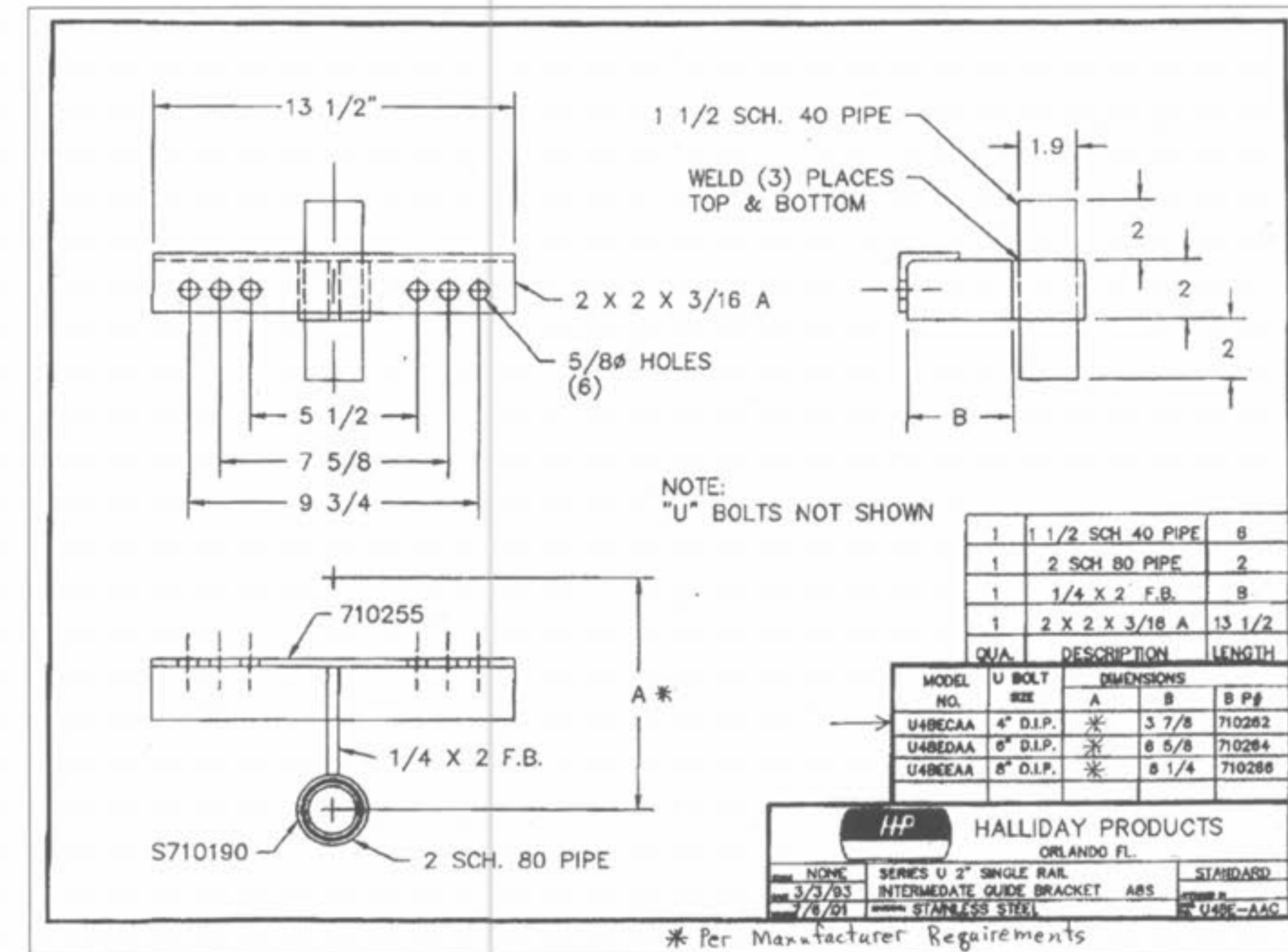
Drawing name: K:\D\0306147_Fox Haven\IMPROVEMENTS\6147PUMPDETAIL.dwg Plotted on: Aug 24, 2005 - 8:24am Plotted by: juetkenhaus



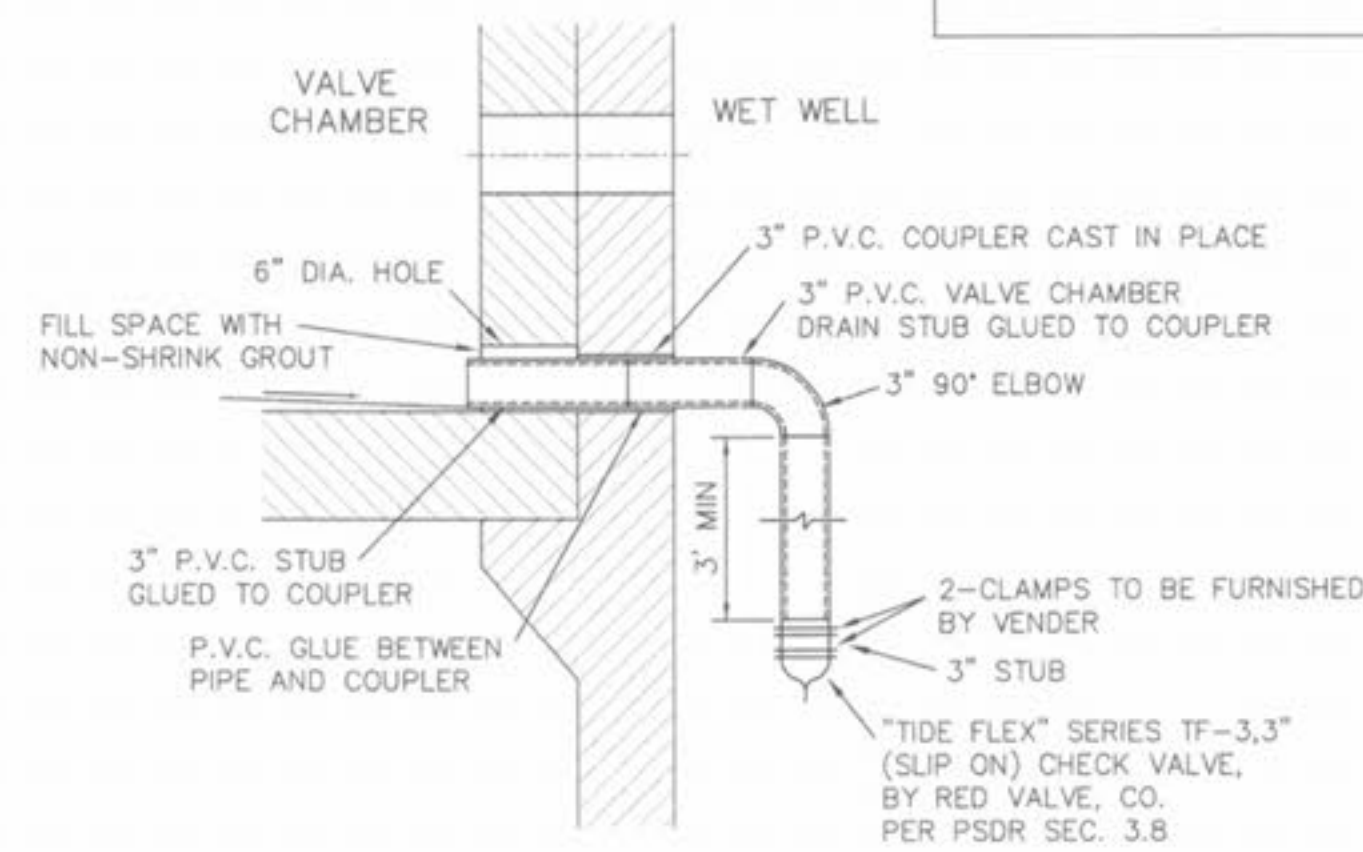
SECTION "A-A"
WET WELL AND VALVE CHAMBER
SCALE: 1/2" = 1'-0"



WET WELL AND VALVE CHAMBER
SCALE: 1/2" = 1'-0"



GUIDE RAIL BRACKET
N.T.S.



VALVE CHAMBER DRAIN DETAIL
N.T.S.

- NOTE:
- DEWATERING WILL BE REQUIRED FOR CONSTRUCTION OF THIS PUMP STATION & SEWERS
 - ALL PIPING INSIDE LIFT STATION WILL BE 2" DIA. SCHEDULE 80 PVC
 - SEE NEXT SHEET FOR PUMP STATION STRUCTURAL DETAILS

ISSUE REMARKS/DATE

1	03-01-04	FIRST SUBMITTAL
2	06-15-04	REVISED PER CITY & DCSD COMMENTS
3	07-20-04	REVISED PER CITY COMMENTS
4	08-04-04	REVISED PER DCSD COMMENTS

PREPARED FOR:
McBride & Son Homes
Land Development, Inc.
#1 McBride & Son Center Drive
Chesterfield, Missouri 63005
(636) 537-2000



PREPARED BY:
THE STERLING CO.
ENGINEERS & SURVEYORS
5055 NEW BAUMGARTNER ROAD
ST. LOUIS, MISSOURI 63129
(314) 991-0400 FAX: 487-6844
E-Mail: Sterling@sterling-eng.com

DRAWN: [] DESIGNED: [] CHECKED: []
FOX HAVEN
PROJECT: [] SHEET TITLE: PUMP STATION #1 DETAILS

No.	03 06 147
M.S.D.	SHEET
P#	38
DIGITAL FILE LOCATION	6147IMP.dwg
DATE	8/24/05