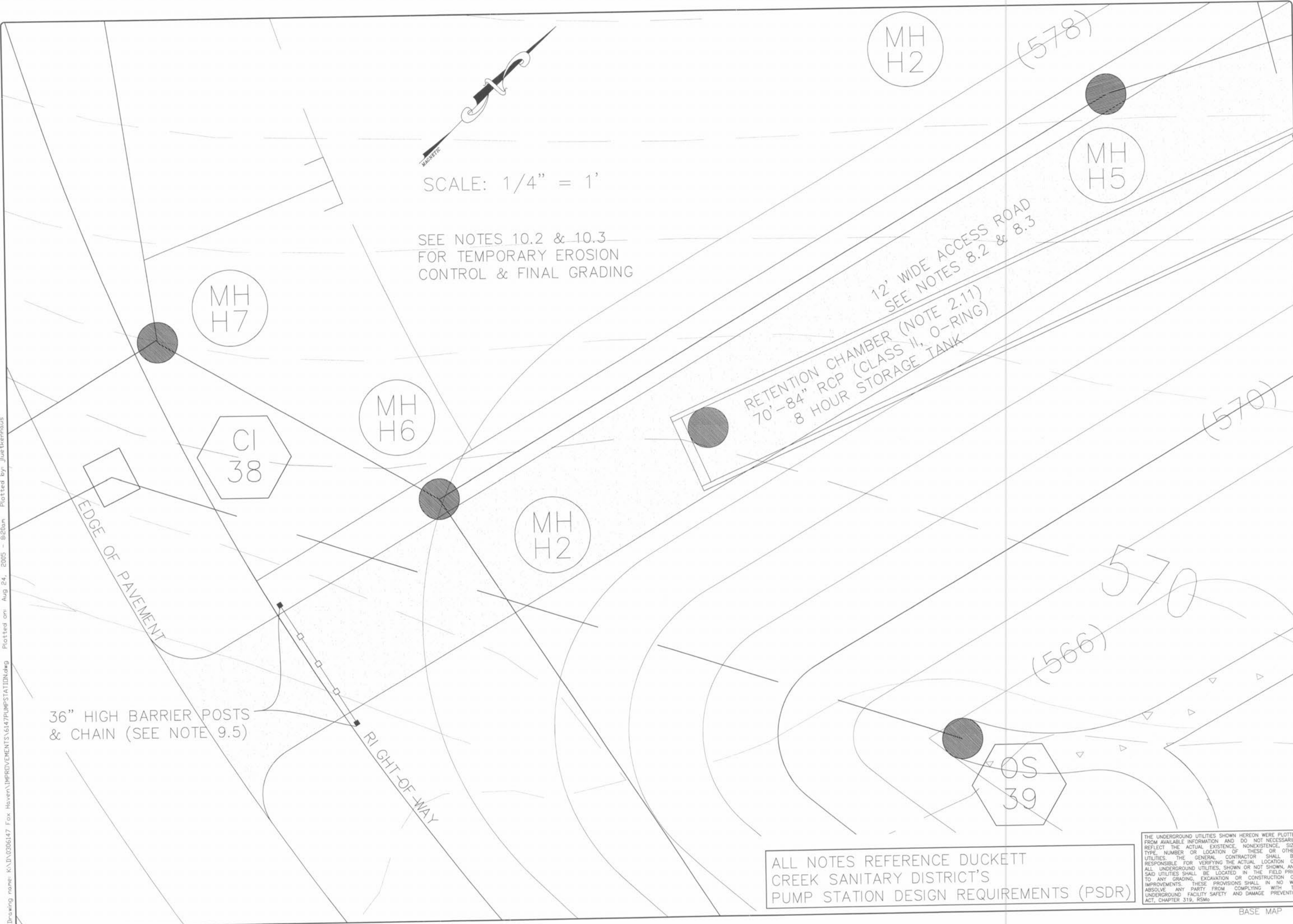


Plotting name: K:\D:\0306147 Fox Haven\IMPROVEMENTS\6147PUMPSTATION.dwg Plotted on: Aug 24, 2005 - 8:20am Plotted by: jluettnerhaus



ISSUE	REMARKS/DATE
1	03-01-04 FIRST SUBMITTAL
2	06-15-04 REVISED PER CITY & DCSD COMMENTS
3	07-20-04 REVISED PER CITY COMMENTS
4	08-04-04 REVISED PER DCSD COMMENTS

PREPARED FOR:
**McBride & Son Homes
 Land Development, Inc.**
 #1 McBride & Son Center Drive
 Chesterfield, Missouri 63005
 (636) 537-2000

PREPARED BY:
THE STERLING CO.
 ENGINEERS & SURVEYORS
 5055 NEW BALMGARTNER ROAD
 ST. LOUIS, MISSOURI 63129
 (314)-487-0440 FAX 487-8944
 E-Mail: Sterling@sterling-eng-sur.com

DRAWN: []
 DESIGNED: []
 CHECKED: []

PROJECT:
FOX HAVEN
 PUMP STATION #2 PLAN

NO.	03	06	147
M.S.D.			
P#			41
DIGITAL FILE LOCATION	K:\D:\0306147\6147PUMPSTATION.dwg		
SHEET	48		

BASE MAP