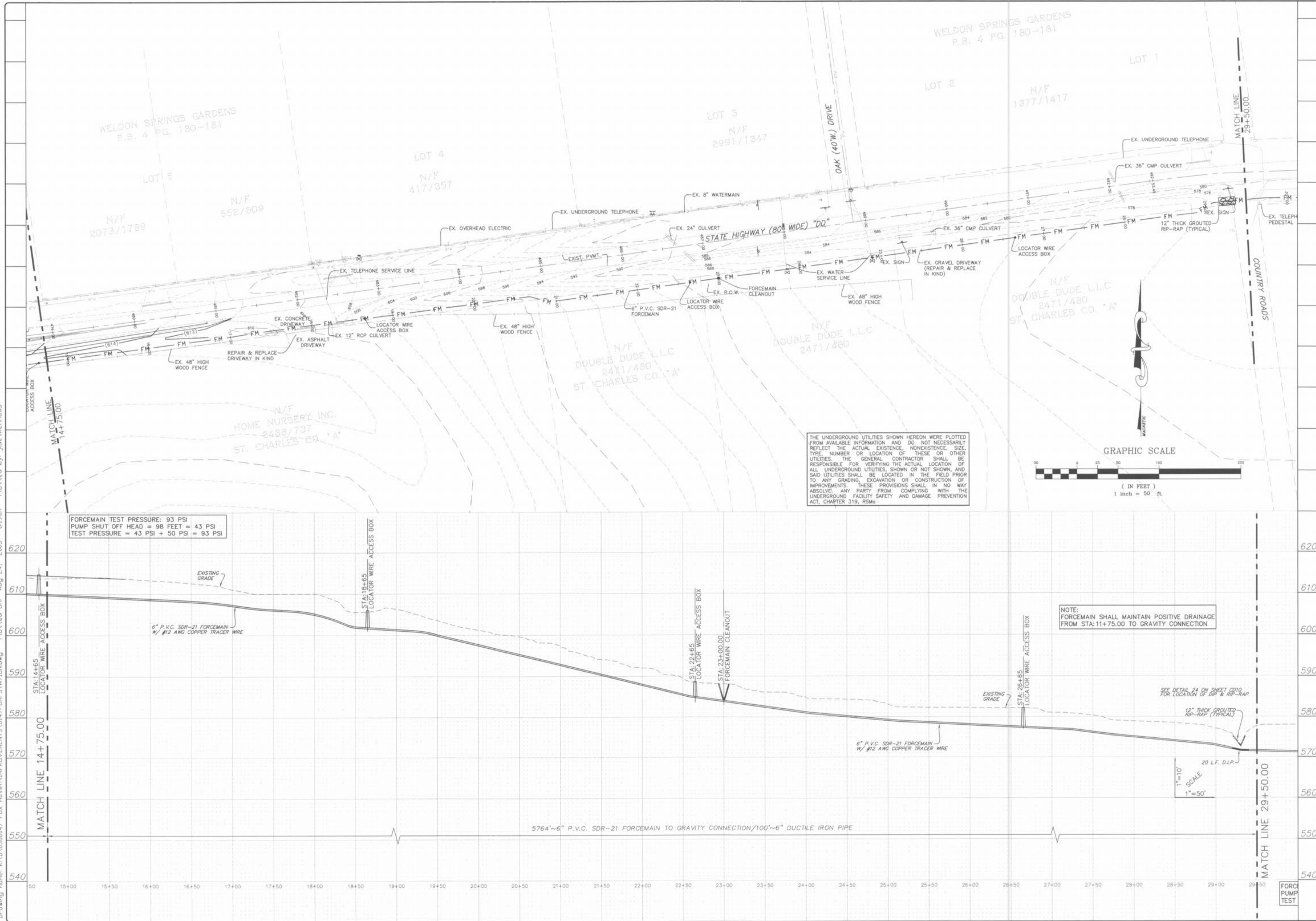
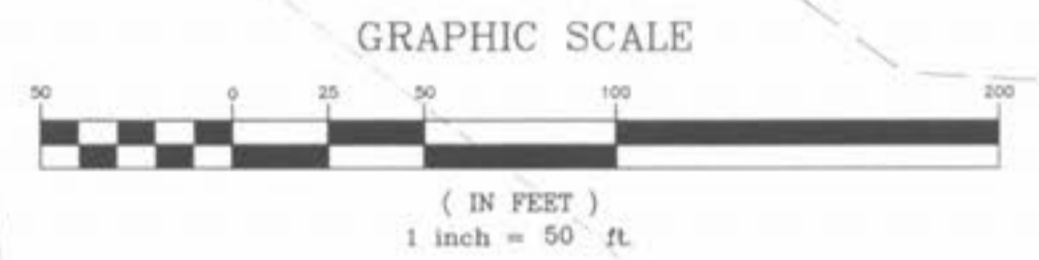


Drawing name: K:\D\0306147 Fox Haven\IMPROVEMENTS\6147PUMP\STATIDN.dwg Plotted on: Aug 24, 2005 - 8:19am Plotted by: jluetkenhaus



THE UNDERGROUND UTILITIES SHOWN HEREON WERE PLOTTED FROM AVAILABLE INFORMATION AND DO NOT NECESSARILY REFLECT THE ACTUAL EXISTENCE, NONEXISTENCE, SIZE, TYPE, NUMBER OR LOCATION OF THESE OR OTHER UTILITIES. THE GENERAL CONTRACTOR SHALL BE RESPONSIBLE FOR VERIFYING THE ACTUAL LOCATION OF ALL UNDERGROUND UTILITIES SHOWN OR NOT SHOWN, AND SAID UTILITIES SHALL BE LOCATED IN THE FIELD PRIOR TO ANY GRADING, EXCAVATION OR CONSTRUCTION OF IMPROVEMENTS. THESE PROVISIONS SHALL IN NO WAY ABSOLVE ANY PARTY FROM COMPLYING WITH THE UNDERGROUND FACILITY SAFETY AND DAMAGE PREVENTION ACT, CHAPTER 319, RSMo



FORCEMAIN TEST PRESSURE: 93 PSI  
 PUMP SHUT OFF HEAD = 98 FEET = 43 PSI  
 TEST PRESSURE = 43 PSI + 50 PSI = 93 PSI

NOTE: FORCEMAIN SHALL MAINTAIN POSITIVE DRAINAGE FROM STA: 11+75.00 TO GRAVITY CONNECTION

1" = 10' SCALE  
 1" = 50'

ISSUE	REMARKS/DATE
1	03-01-04 FIRST SUBMITTAL
2	06-15-04 REVISED PER CITY & DCSD COMMENTS
3	07-20-04 REVISED PER CITY COMMENTS
4	08-04-04 REVISED PER DCSD COMMENTS
5	09-17-04 REVISED PER DCSD COMMENTS

PREPARED FOR:  
**McBride & Son Homes Land Development, Inc.**  
 #1 McBride & Son Center Drive  
 Chesterfield, Missouri 63305  
 (636) 537-2000



THE **STERLING CO.**  
 ENGINEERS & SURVEYORS  
 5085 N. MISSOURI ROAD  
 ST. LOUIS, MISSOURI 63112  
 (314) 487-0440 FAX 487-9844  
 E-Mail: Sterling@sterling-eng-sur.com

PROJECT: **FOX HAVEN**  
 SHEET TITLE: **FORCEMAIN #2 PLAN/PROFILE**

NO	03	06	147
M.S.D.			
P#	43		
DIGITAL FILE LOCATION			
DATE			

BASE MAP