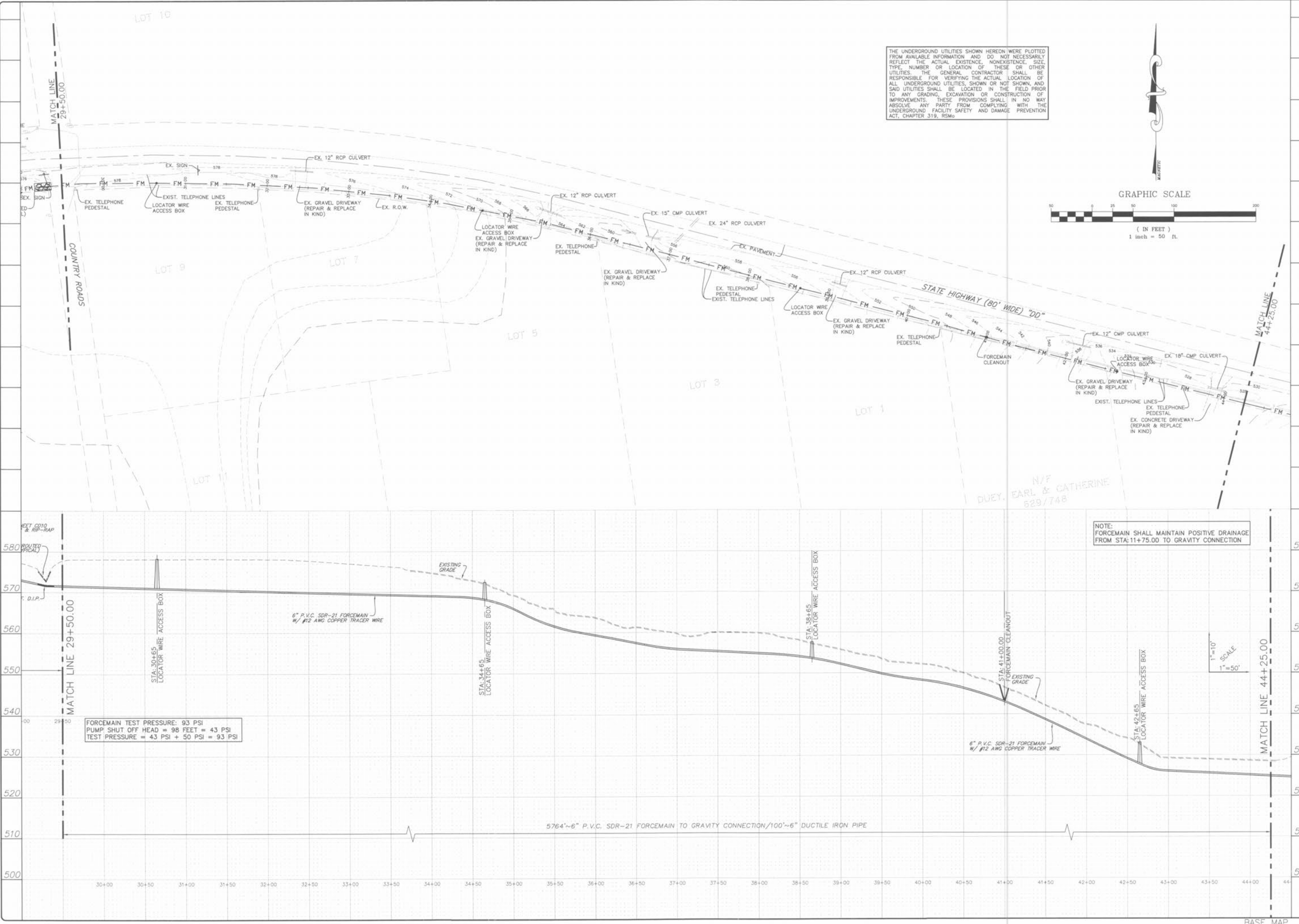
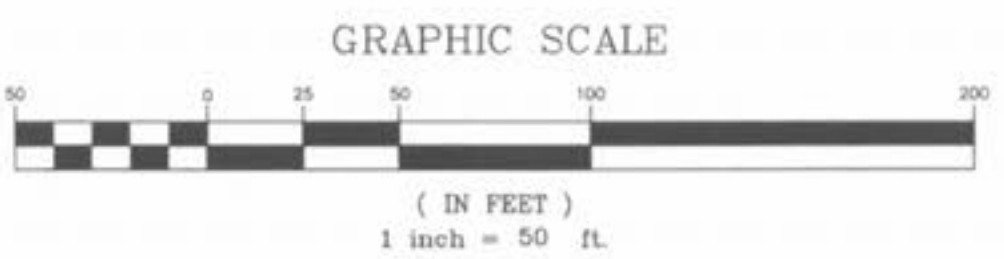


Drawing name: K:\A\0306147 Fox Haven\IMPROVEMENTS\6147PUMPSTATION.dwg Plotted on: Aug 24, 2005 - 8:19am Plotted by: Juetkenhaus



THE UNDERGROUND UTILITIES SHOWN HEREON WERE PLOTTED FROM AVAILABLE INFORMATION AND DO NOT NECESSARILY REFLECT THE ACTUAL EXISTENCE, NONEXISTENCE, SIZE, TYPE, NUMBER OR LOCATION OF THESE OR OTHER UTILITIES. THE GENERAL CONTRACTOR SHALL BE RESPONSIBLE FOR VERIFYING THE ACTUAL LOCATION OF ALL UNDERGROUND UTILITIES, SHOWN OR NOT SHOWN, AND SAID UTILITIES SHALL BE LOCATED IN THE FIELD PRIOR TO ANY GRADING, EXCAVATION OR CONSTRUCTION OF IMPROVEMENTS. THESE PROVISIONS SHALL IN NO WAY ABSOLVE ANY PARTY FROM COMPLYING WITH THE UNDERGROUND FACILITY SAFETY AND DAMAGE PREVENTION ACT, CHAPTER 319, RSMo.



ISSUE	REMARKS/DATE
1	03-01-04 FIRST SUBMITTAL
2	05-15-04 REVISED PER CITY & DCS&D COMMENTS
3	07-29-04 REVISED PER CITY COMMENTS
4	08-04-04 REVISED PER DCS&D COMMENTS
5	09-17-04 REVISED PER DCS&D COMMENTS

PREPARED FOR:
**McBride & Son Homes
 Land Development, Inc.**
 #1 McBride & Son Center Drive
 Chesterfield, Missouri 63305
 (636) 537-2000



PREPARED BY:
THE STERLING CO.
 ENGINEERS & SURVEYORS
 5055 NEW BAUMGARTNER ROAD
 ST. LOUIS, MISSOURI 63129
 (314)-487-0440 FAX 487-8844
 E-Mail: Sterling@sterling-eng-survey.com

DRAWN: _____
 DESIGNED: _____
 CHECKED: _____

PROJECT:
FOX HAVEN
 SHEET TITLE:
FORCEMAIN #2 PLAN/PROFILE

NO.	03 06 147
M.S.D.	SHEET
P#	44
DIGITAL FILE LOCATION SERVER=STERLING-2 C:\DWG	OF 48

FORCEMAIN TEST PRESSURE: 93 PSI
 PUMP SHUT OFF HEAD = 98 FEET = 43 PSI
 TEST PRESSURE = 43 PSI + 50 PSI = 93 PSI

NOTE:
 FORCEMAIN SHALL MAINTAIN POSITIVE DRAINAGE
 FROM STA:11+75.00 TO GRAVITY CONNECTION

1"=10'
 1"=50'

BASE MAP