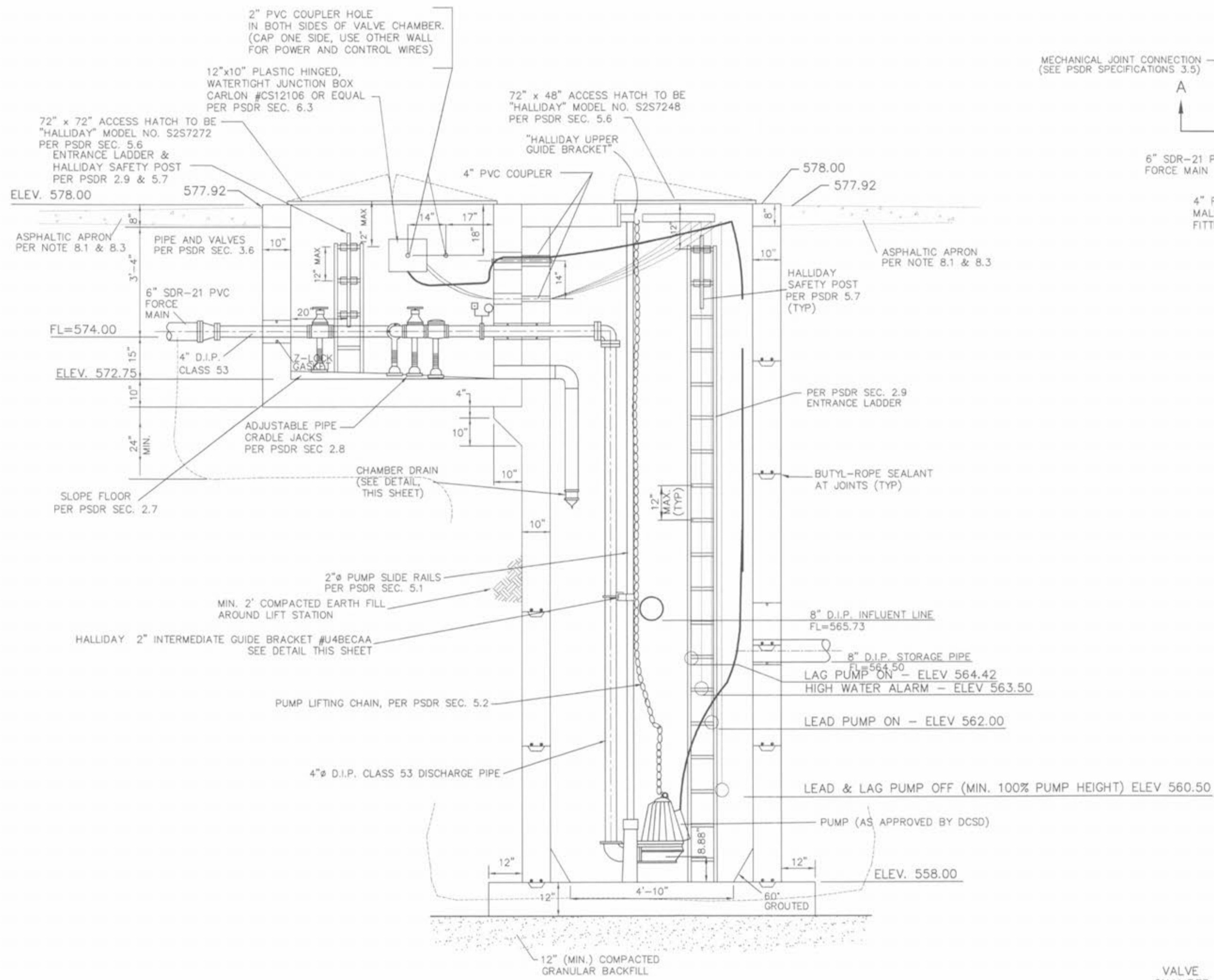
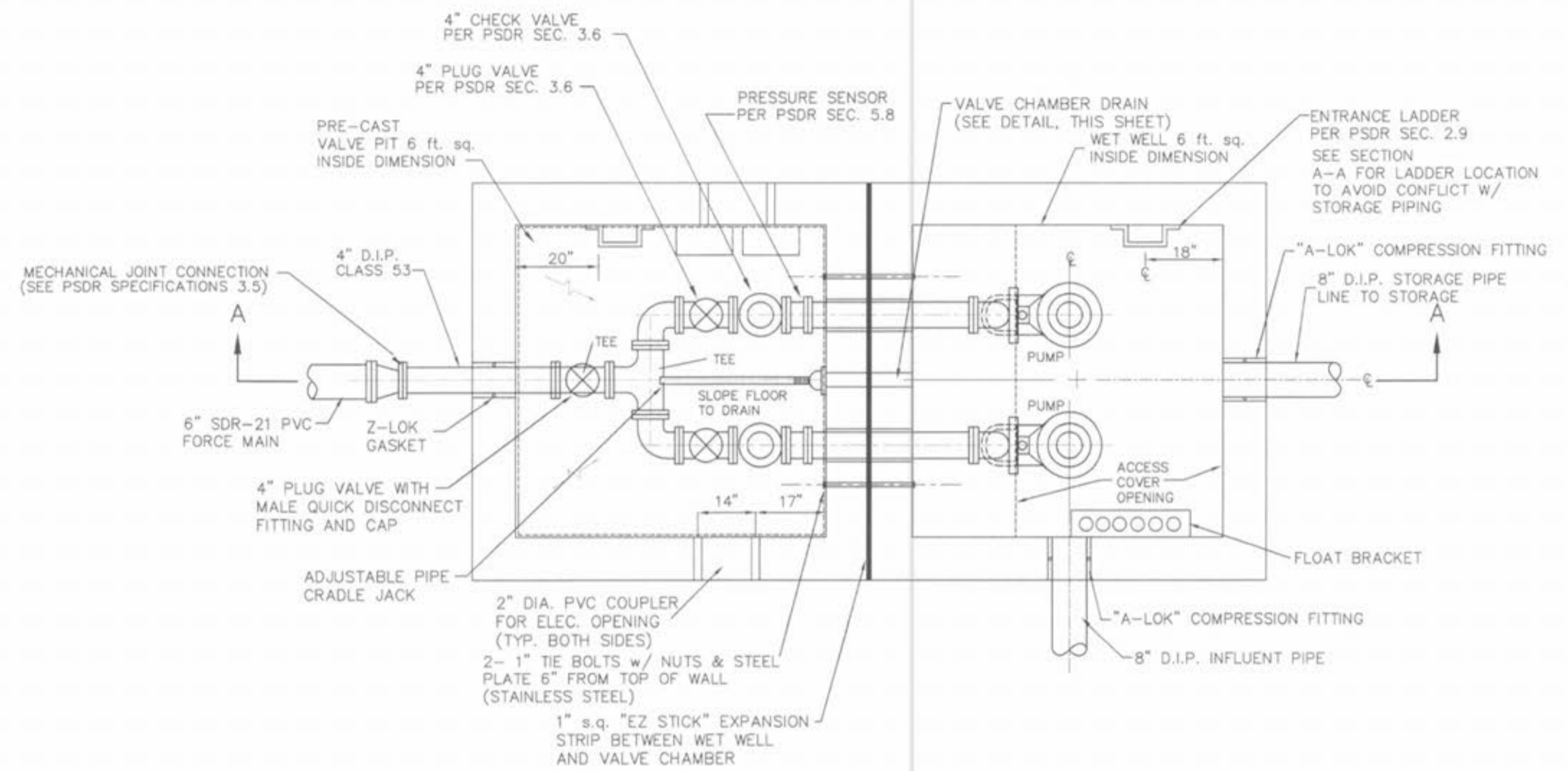


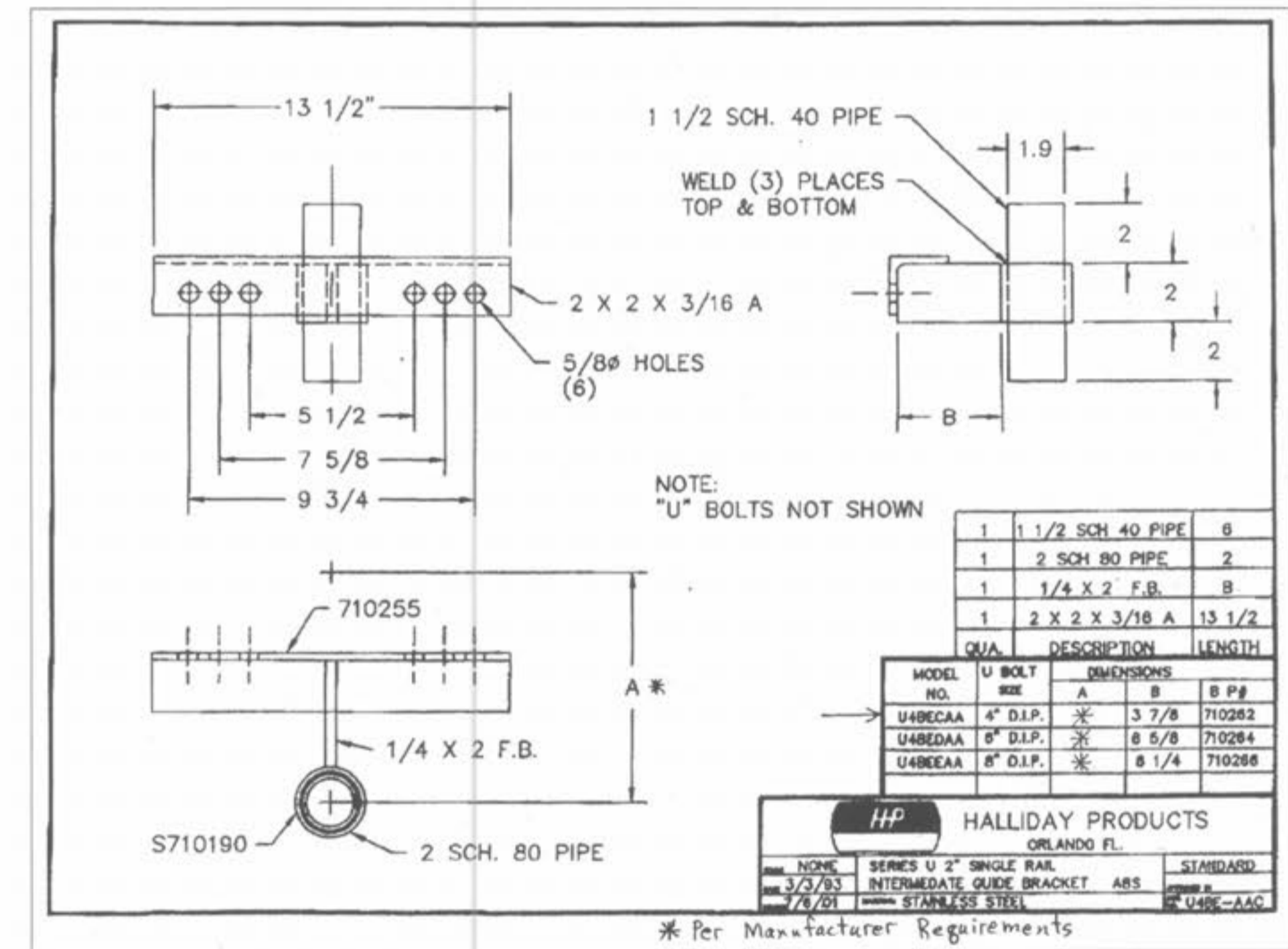
Drawing name: K:\0306147 Fox Haven\IMPROVEMENTS\6147PUMPDETAIL.dwg Plotted on: Aug 24, 2005 — 8:18am Plotted by: juetkenhaus



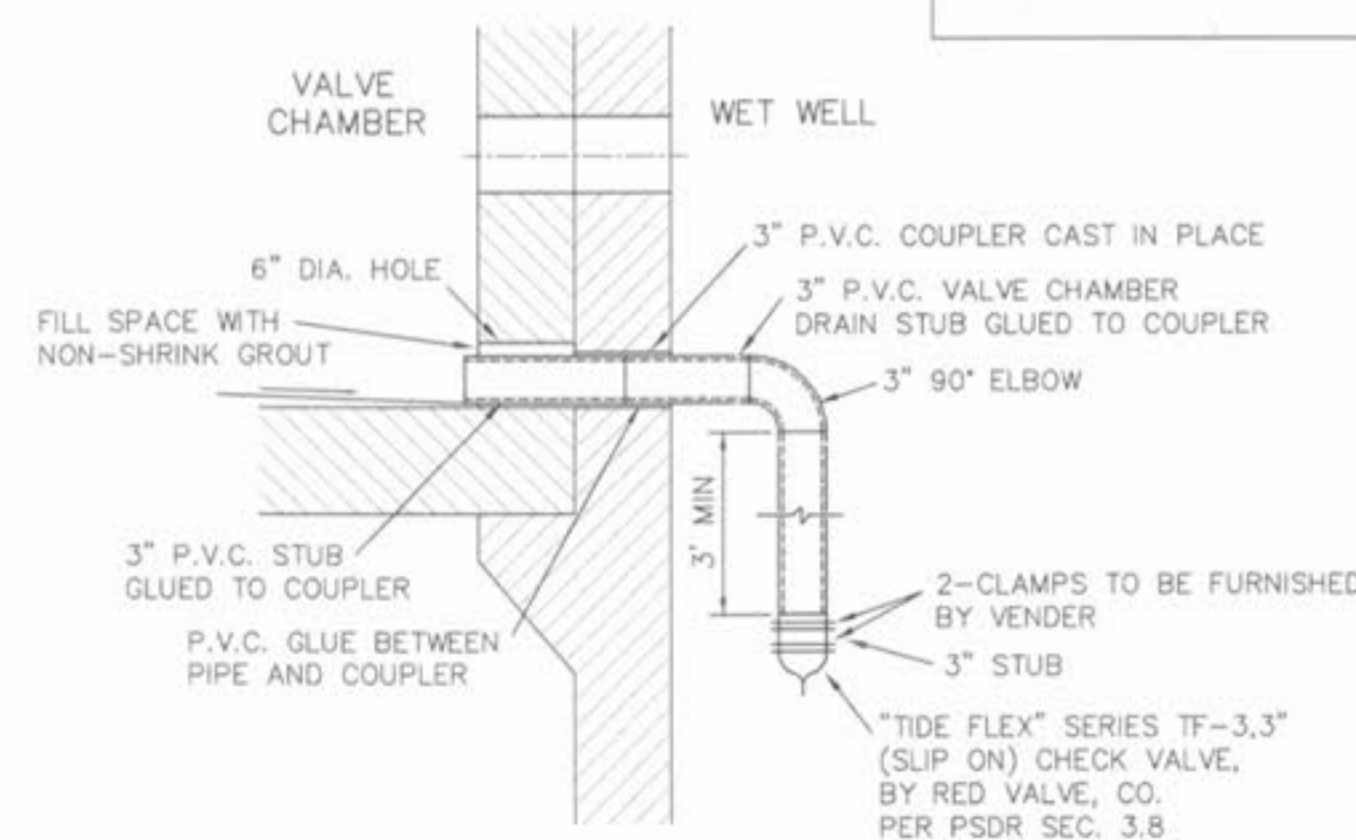
SECTION "A-A"
WET WELL AND VALVE CHAMBER
SCALE: 1/2" = 1'-0"



WET WELL AND VALVE CHAMBER
SCALE: 1/2" = 1'-0"



GUIDE RAIL BRACKET
N.T.S.



VALVE CHAMBER DRAIN DETAIL
N.T.S.

- NOTE:
1. DEWATERING WILL BE REQUIRED FOR CONSTRUCTION OF THIS PUMP STATION & SEWERS
 2. ALL PIPING INSIDE LIFT STATION WILL BE 4" D.I.P. CLASS 53
 3. SEE NEXT SHEET FOR PUMP STATION STRUCTURAL DETAILS

ISSUE	REMARKS/DATE
1	03-01-04 FIRST SUBMITTAL
2	06-15-04 REVISED PER CITY & DCSD COMMENTS
3	07-20-04 REVISED PER CITY COMMENTS
4	08-04-04 REVISED PER DCSD COMMENTS

PREPARED FOR:
**McBride & Son Homes
Land Development, Inc.**
#1 McBride & Son Center Drive
Chesterfield, Missouri 63005
(636) 537-2000



PREPARED BY:
THE STERLING CO.
ENGINEERS & SURVEYORS
5055 NEW BAUMGARTNER ROAD
ST. LOUIS, MISSOURI 63129
(314) 487-0440 FAX 487-8844
E-Mail: Sterling@sterling-eng-survey.com

DRAWN BY:
DESIGNED BY:
CHECKED BY:

PROJECT:
FOX HAVEN
PUMP STATION #2 DETAILS

NO.	03 06 147
M.S.D.	SHEET
P#	46
DIGITAL FILE LOCATION	48

BASE MAP