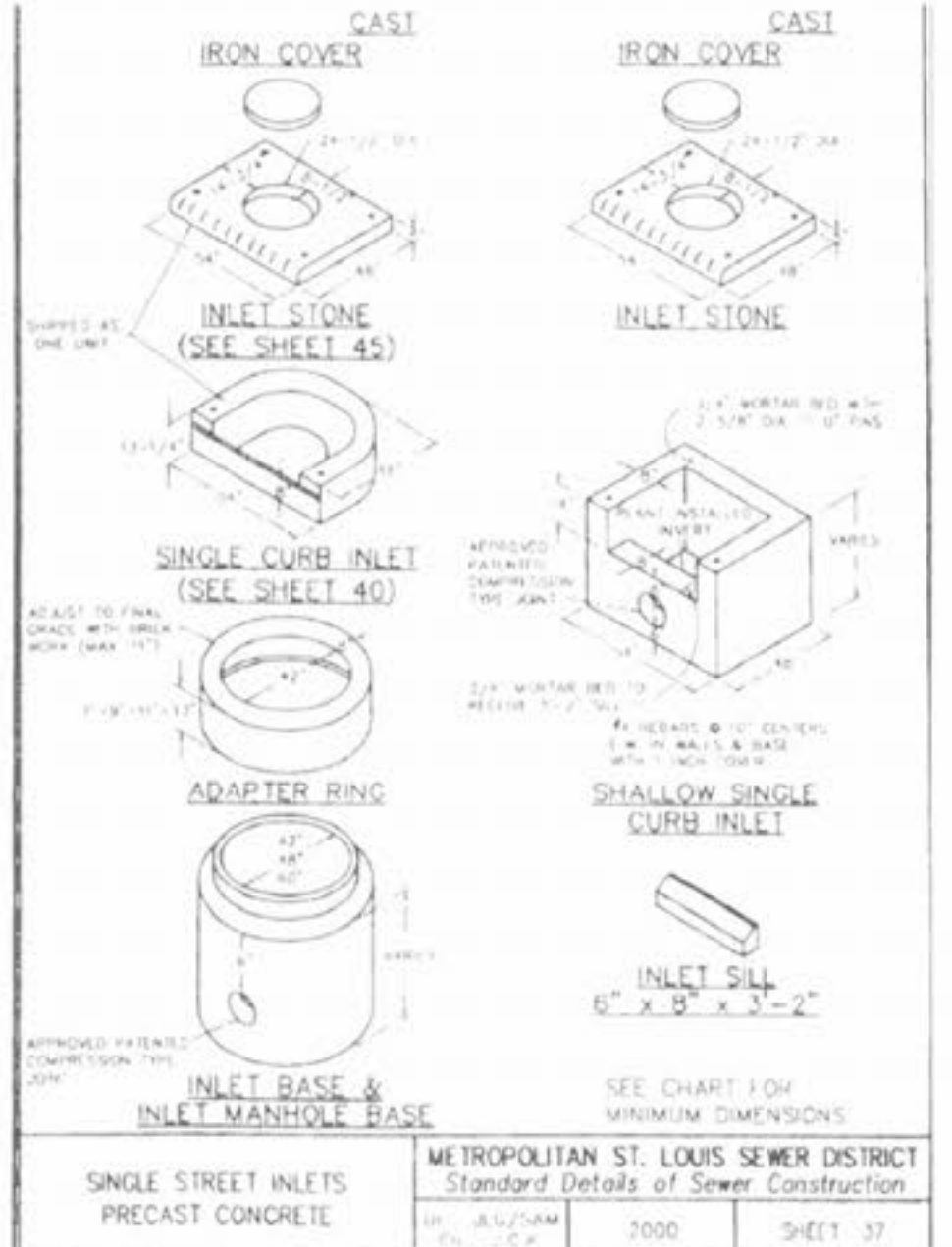
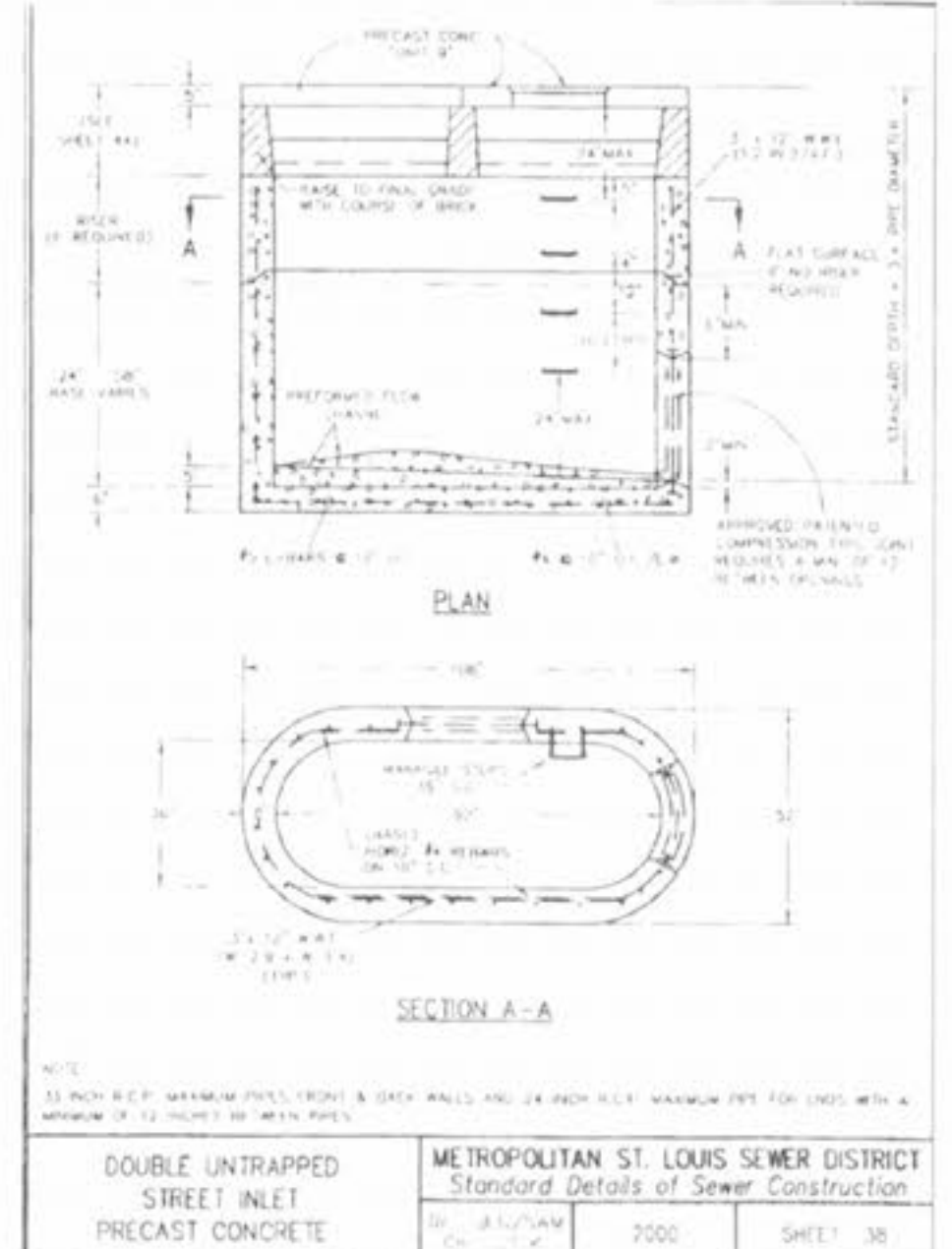


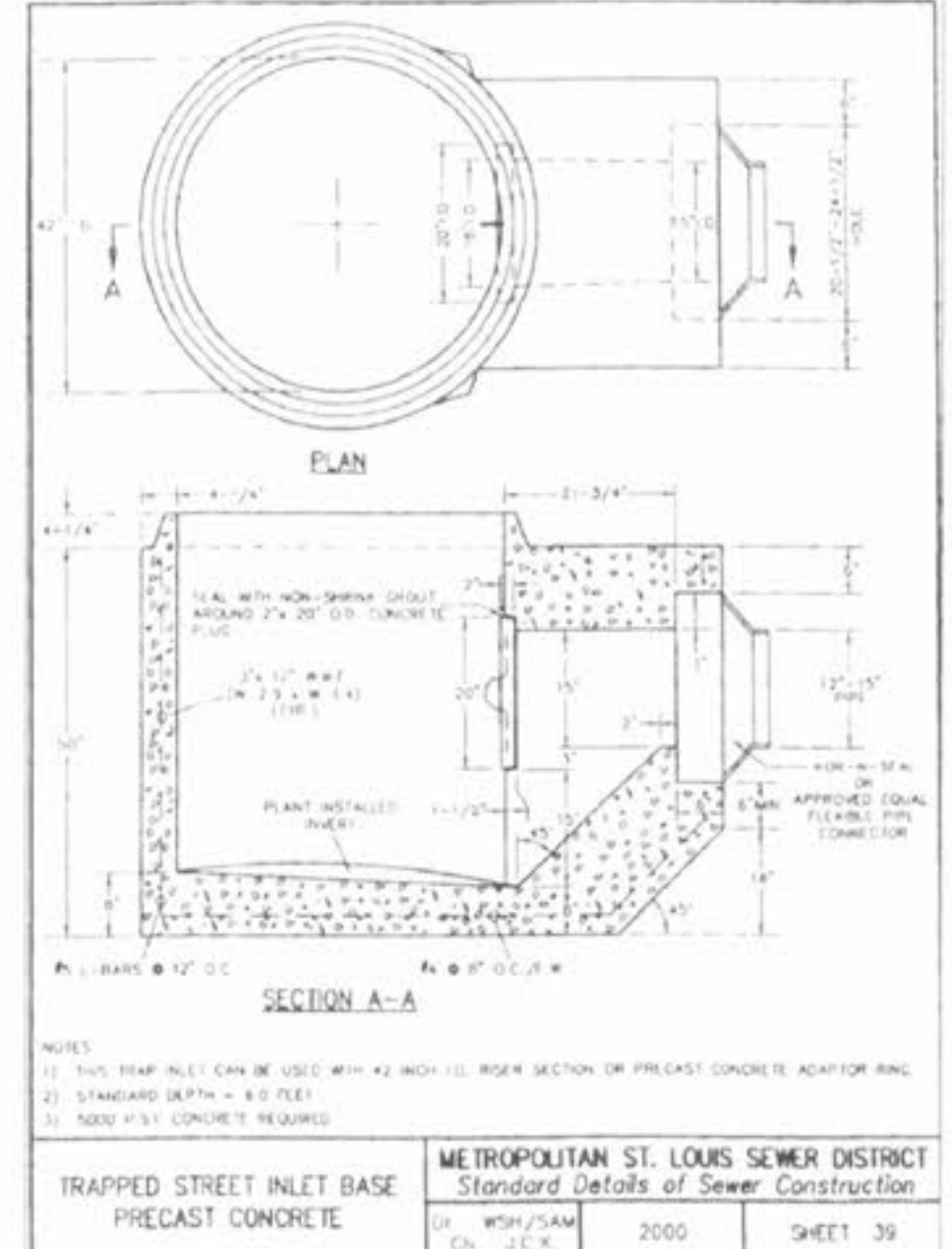
Drawing name: K:\D\0306147 Fox Haven\IMPROVEMENTS\6147\DETAILS.dwg Plotted on: Aug 24, 2005 - 8:32am Plotted by: juetkenhaus



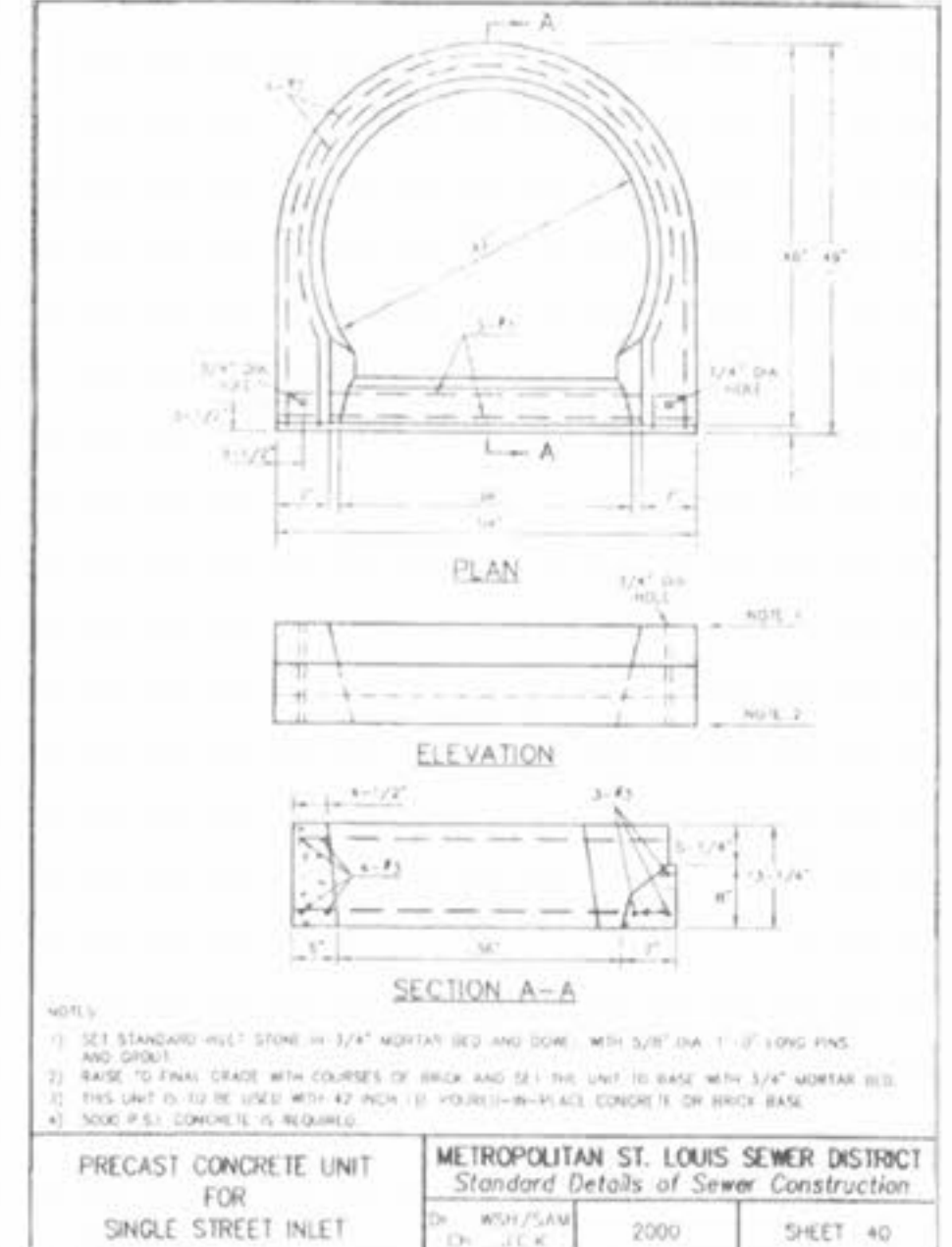
SINGLE STREET INLETS PRECAST CONCRETE	METROPOLITAN ST. LOUIS SEWER DISTRICT Standard Details of Sewer Construction	2000	SHEET 37
--	---	------	----------



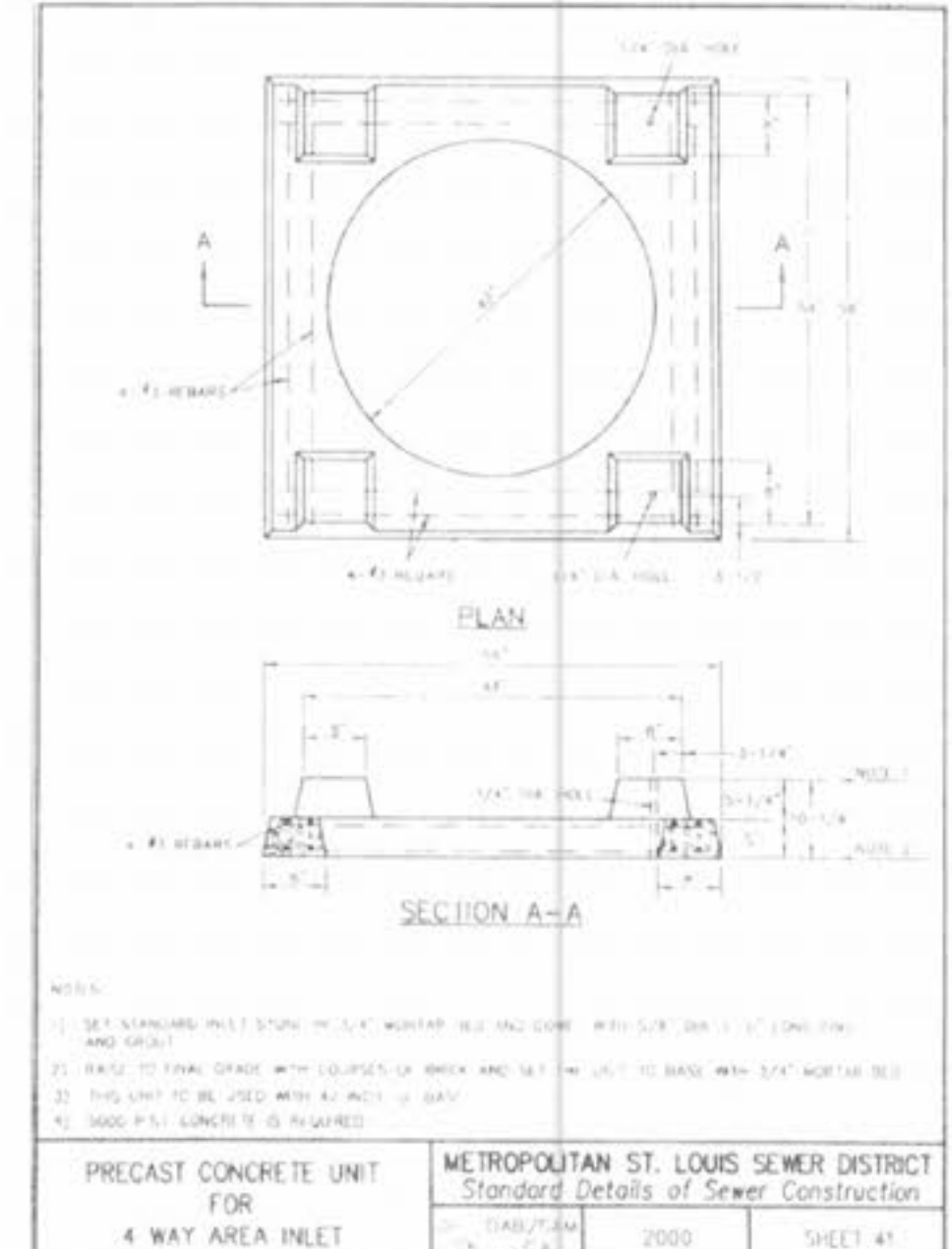
DOUBLE UNTRAPPED STREET INLET PRECAST CONCRETE	METROPOLITAN ST. LOUIS SEWER DISTRICT Standard Details of Sewer Construction	2000	SHEET 38
---	---	------	----------



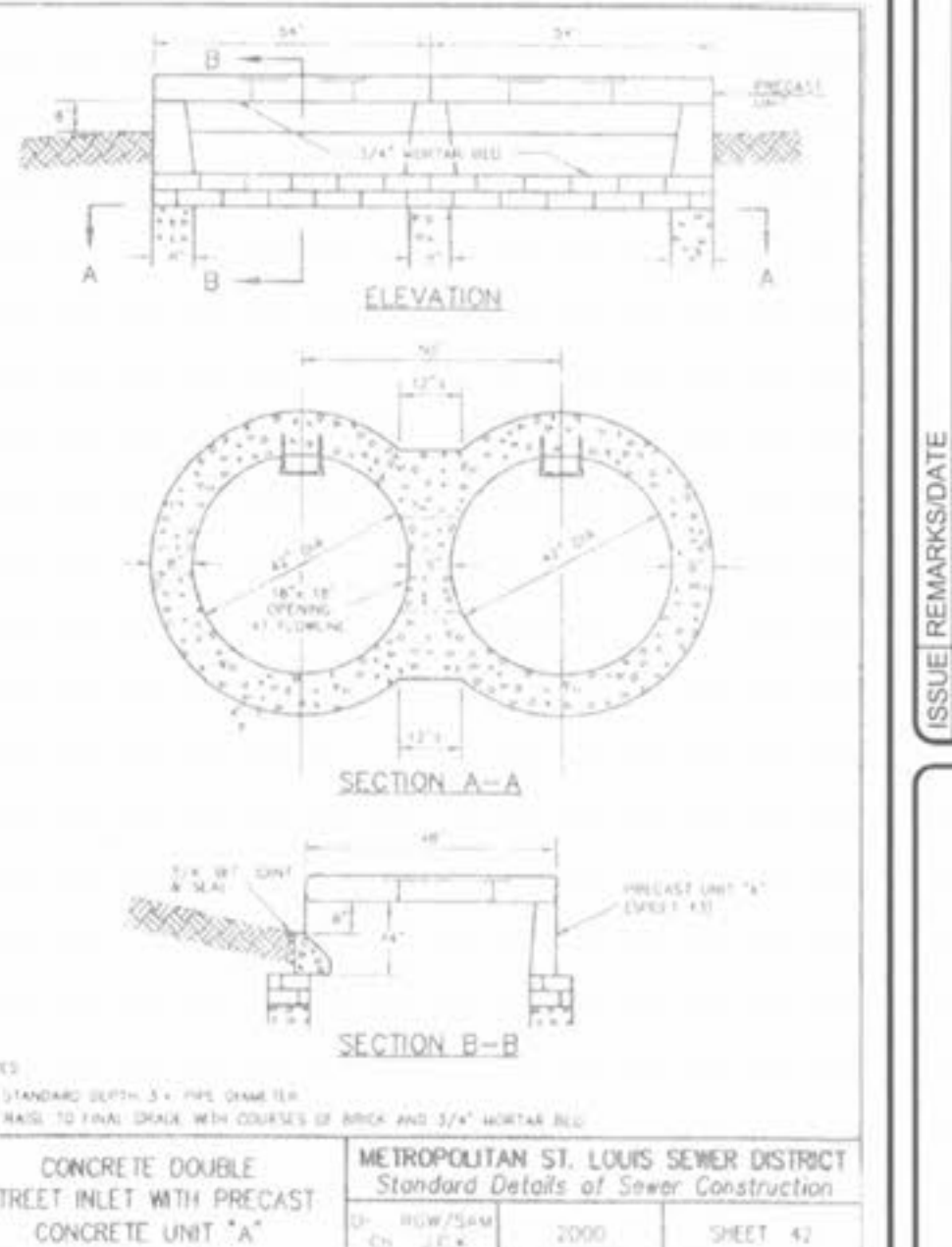
TRAPPED STREET INLET BASE PRECAST CONCRETE	METROPOLITAN ST. LOUIS SEWER DISTRICT Standard Details of Sewer Construction	2000	SHEET 39
---	---	------	----------



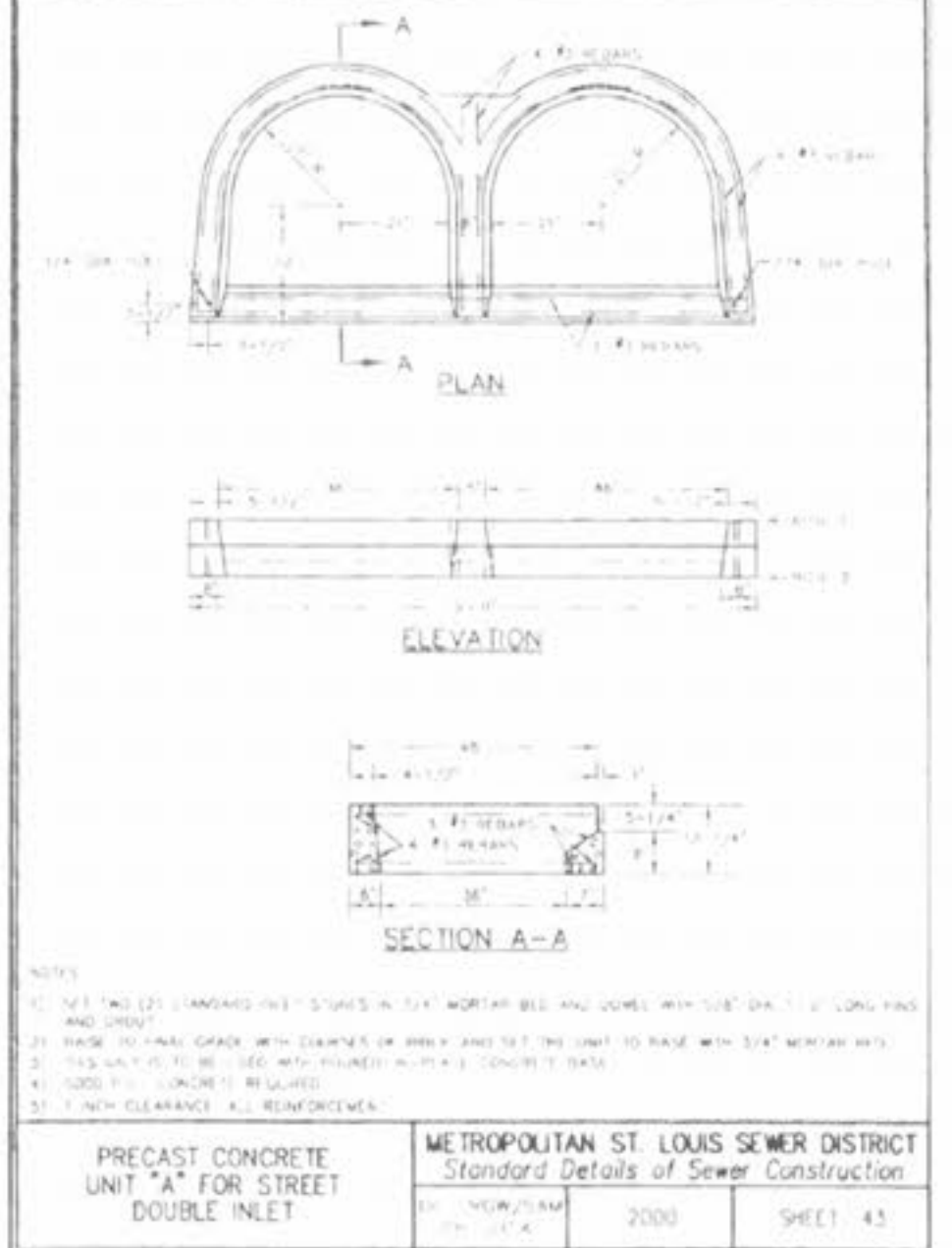
PRECAST CONCRETE UNIT FOR SINGLE STREET INLET	METROPOLITAN ST. LOUIS SEWER DISTRICT Standard Details of Sewer Construction	2000	SHEET 40
---	---	------	----------



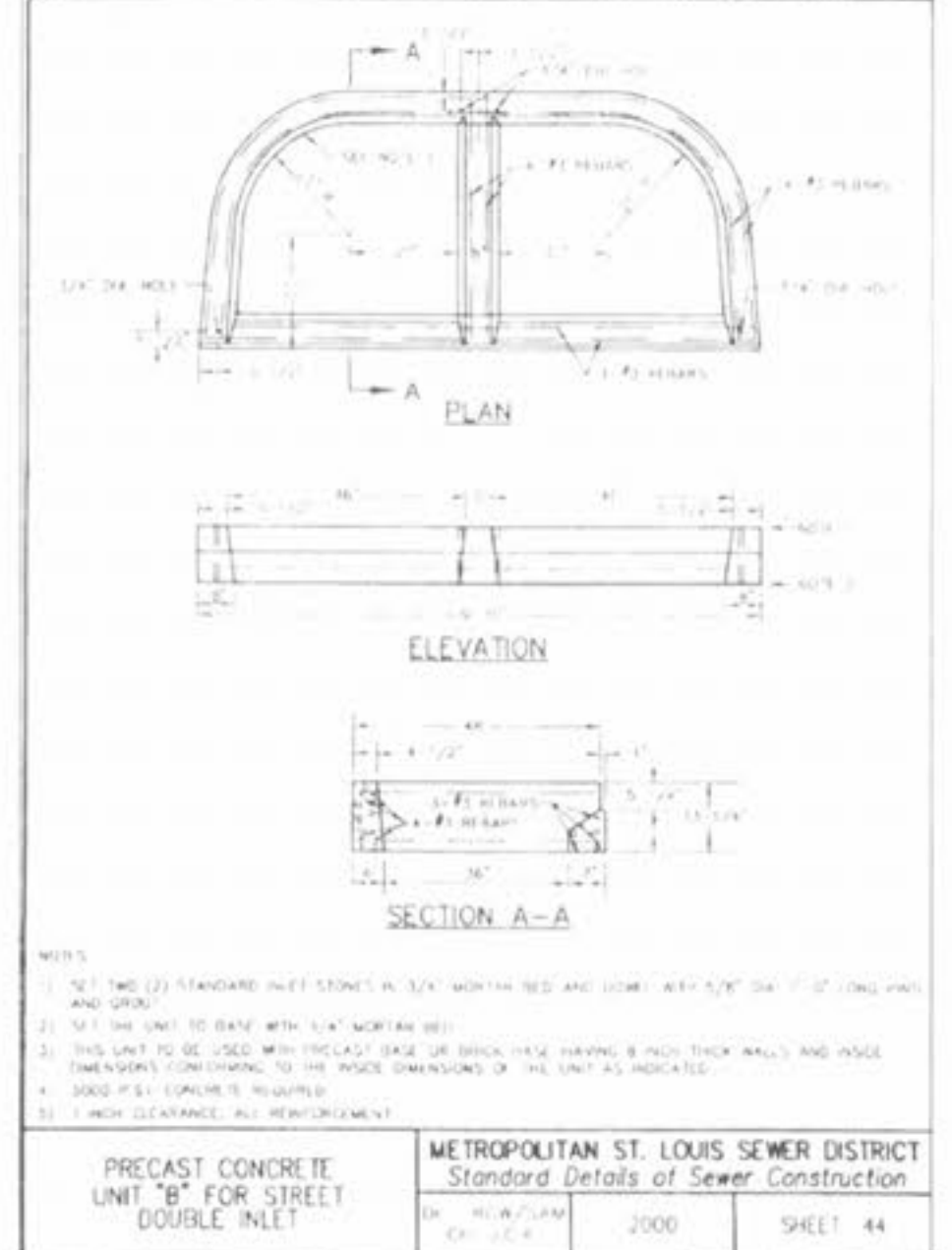
PRECAST CONCRETE UNIT FOR 4 WAY AREA INLET	METROPOLITAN ST. LOUIS SEWER DISTRICT Standard Details of Sewer Construction	2000	SHEET 41
--	---	------	----------



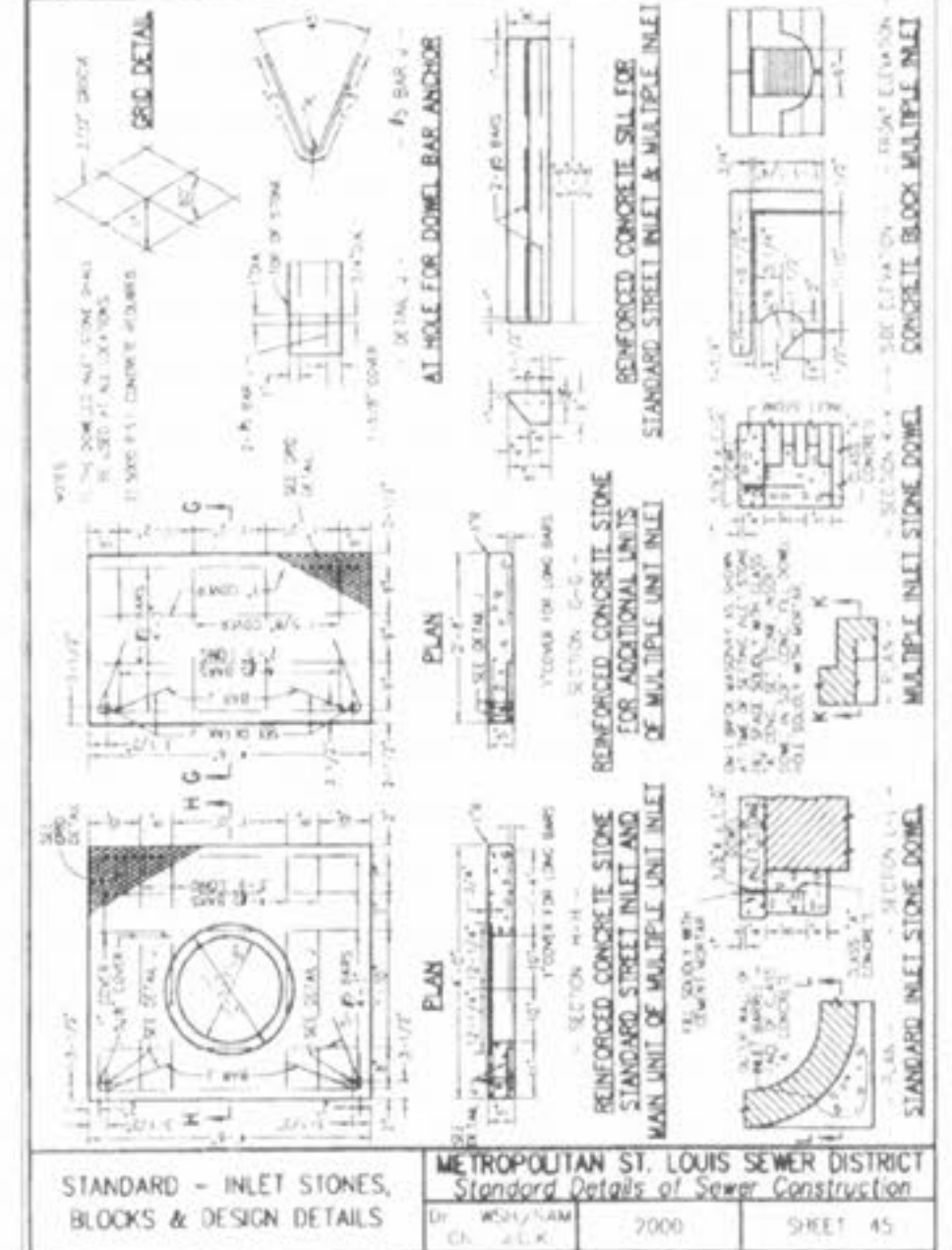
CONCRETE DOUBLE STREET INLET WITH PRECAST CONCRETE UNIT "A"	METROPOLITAN ST. LOUIS SEWER DISTRICT Standard Details of Sewer Construction	2000	SHEET 42
---	---	------	----------



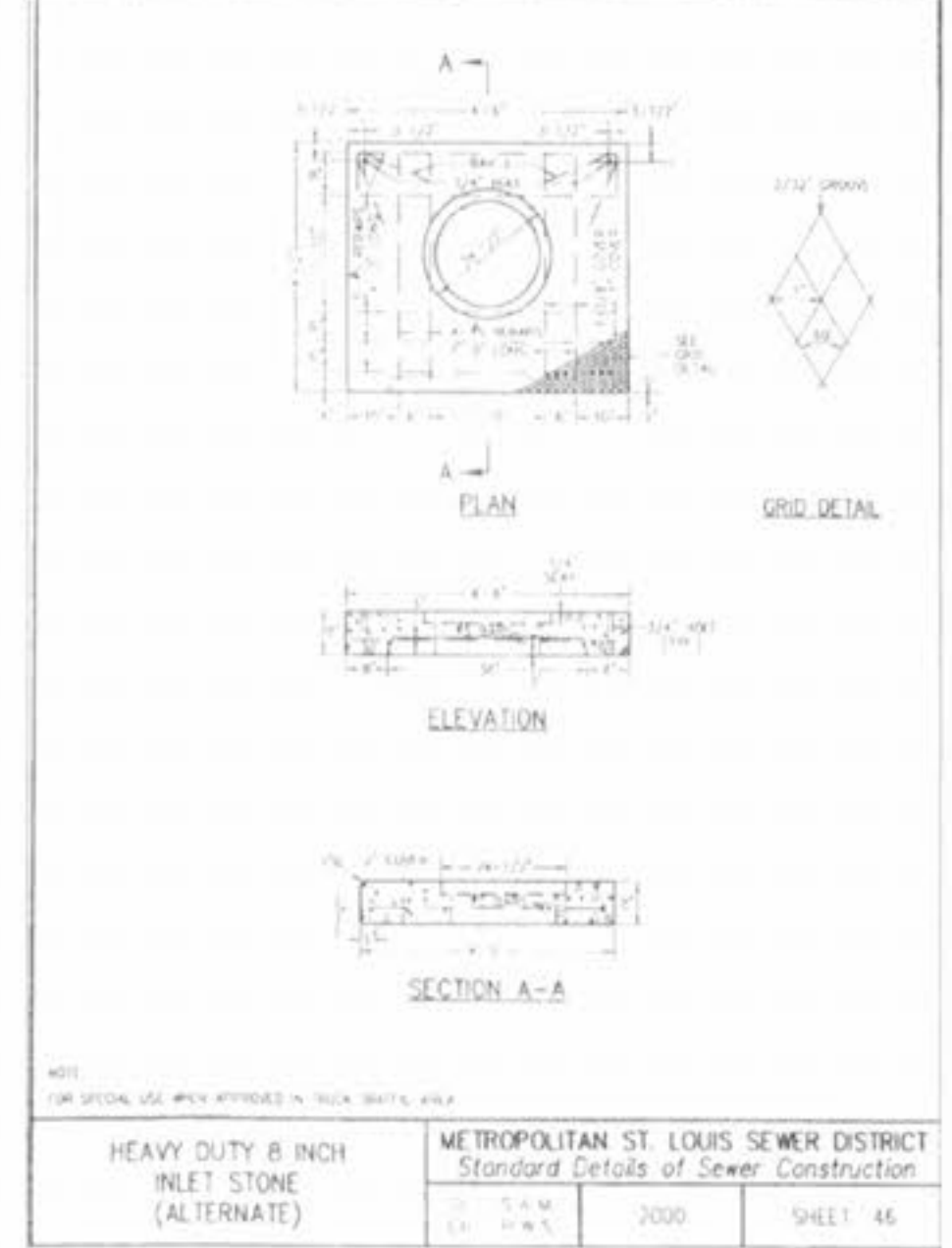
PRECAST CONCRETE UNIT "A" FOR STREET DOUBLE INLET	METROPOLITAN ST. LOUIS SEWER DISTRICT Standard Details of Sewer Construction	2000	SHEET 43
---	---	------	----------



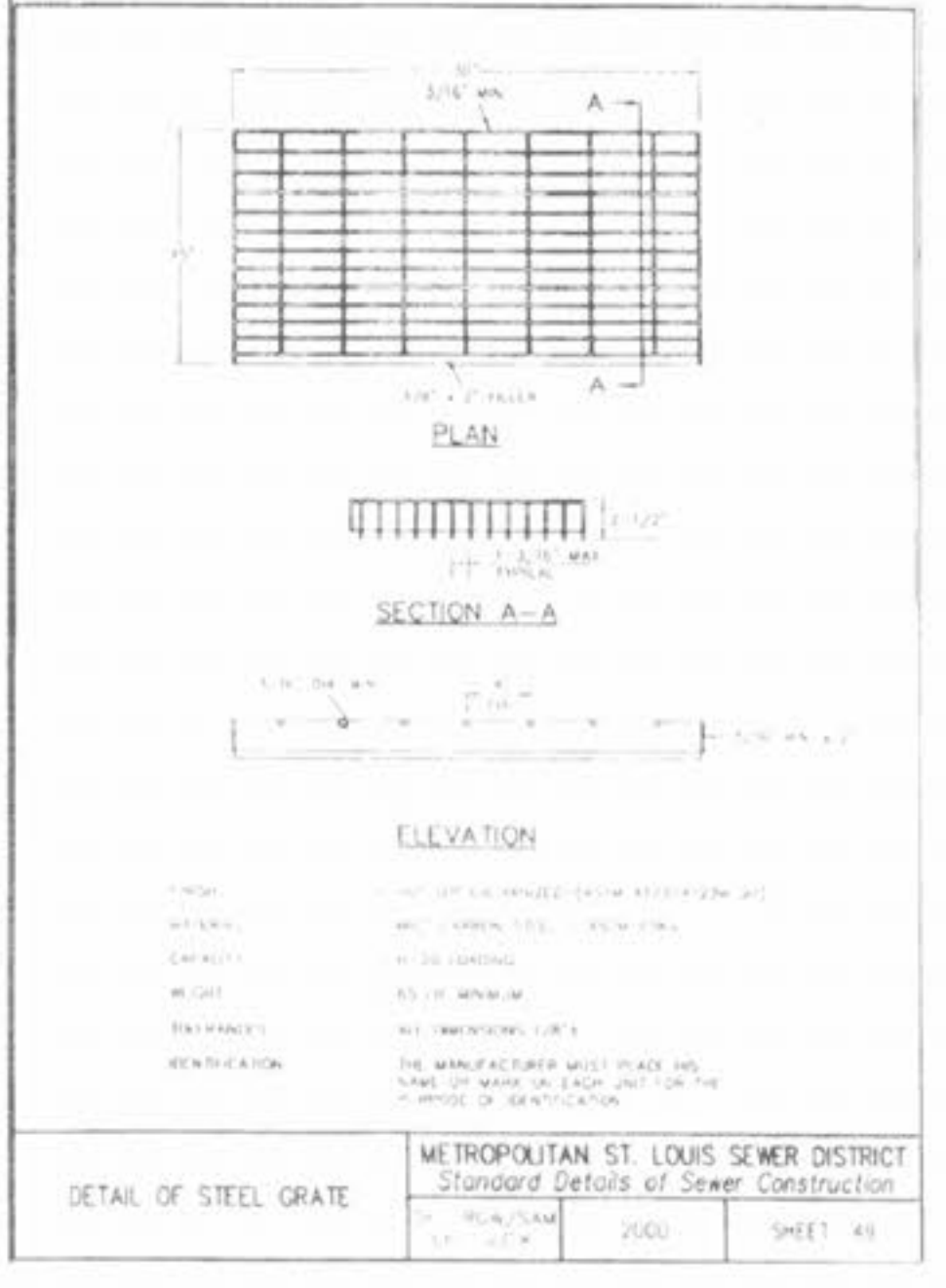
PRECAST CONCRETE UNIT "B" FOR STREET DOUBLE INLET	METROPOLITAN ST. LOUIS SEWER DISTRICT Standard Details of Sewer Construction	2000	SHEET 44
---	---	------	----------



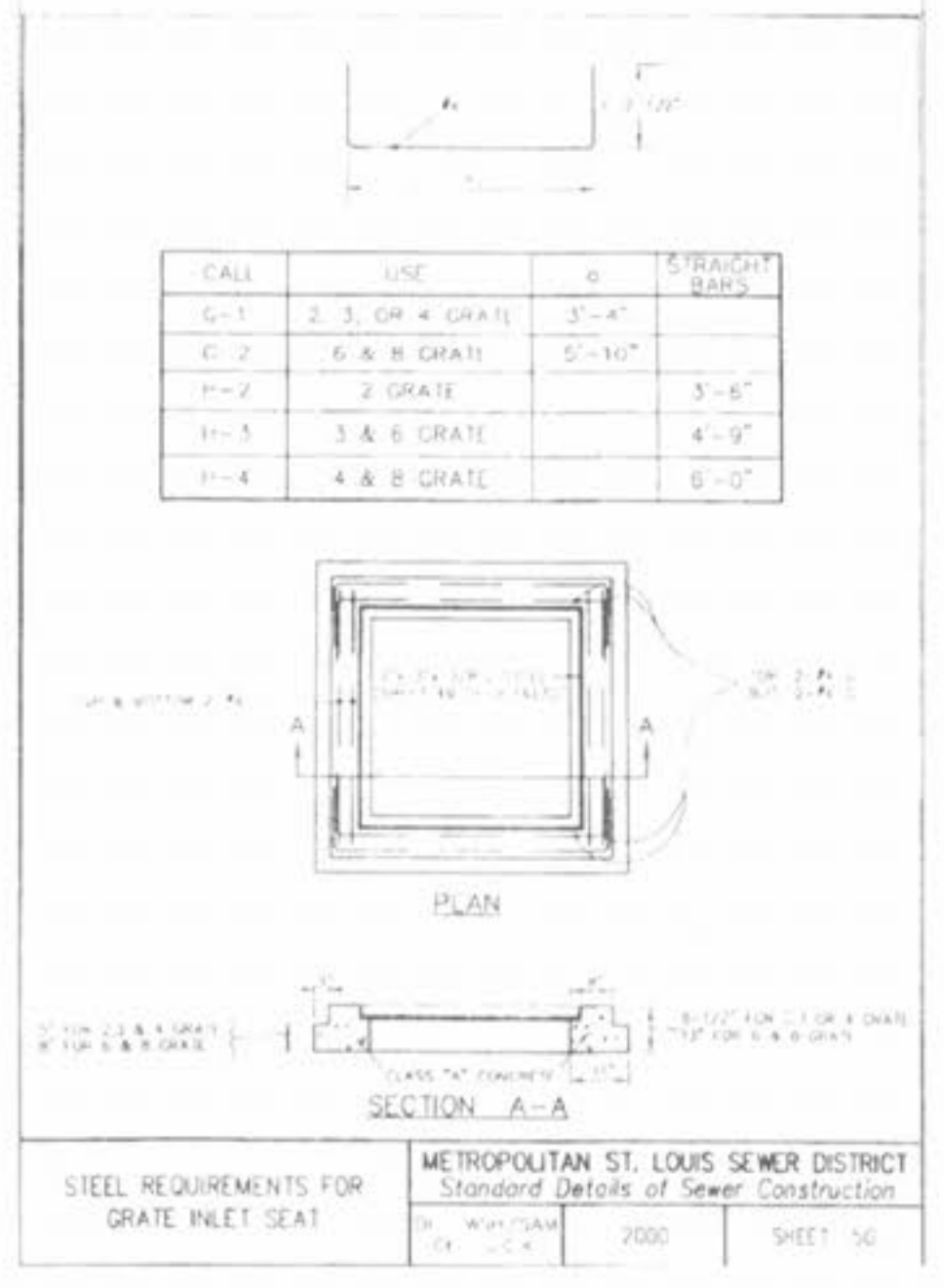
STANDARD - INLET STONES, BLOCKS & DESIGN DETAILS	METROPOLITAN ST. LOUIS SEWER DISTRICT Standard Details of Sewer Construction	2000	SHEET 45
--	---	------	----------



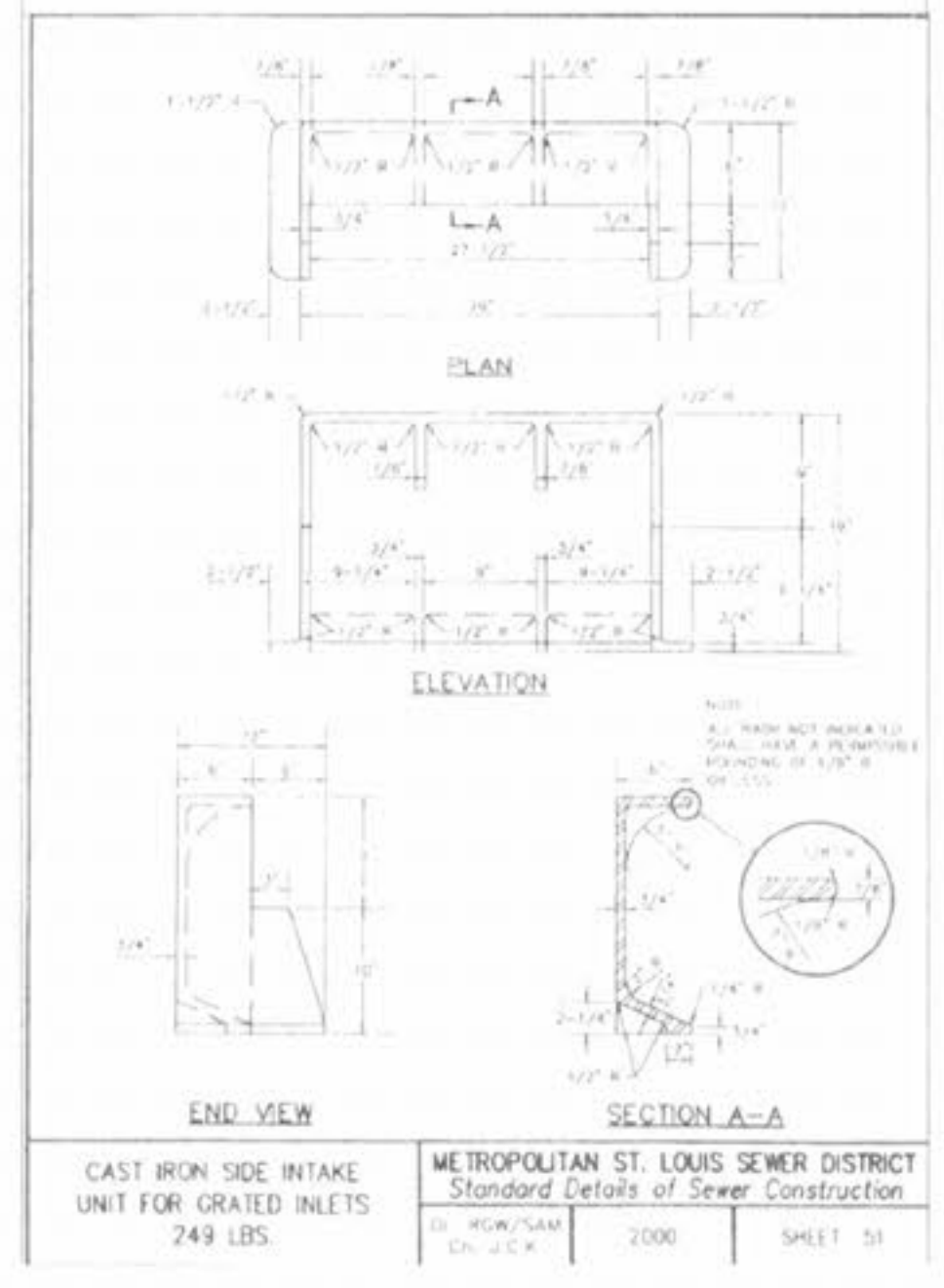
HEAVY DUTY 8 INCH INLET STONE (ALTERNATE)	METROPOLITAN ST. LOUIS SEWER DISTRICT Standard Details of Sewer Construction	2000	SHEET 46
---	---	------	----------



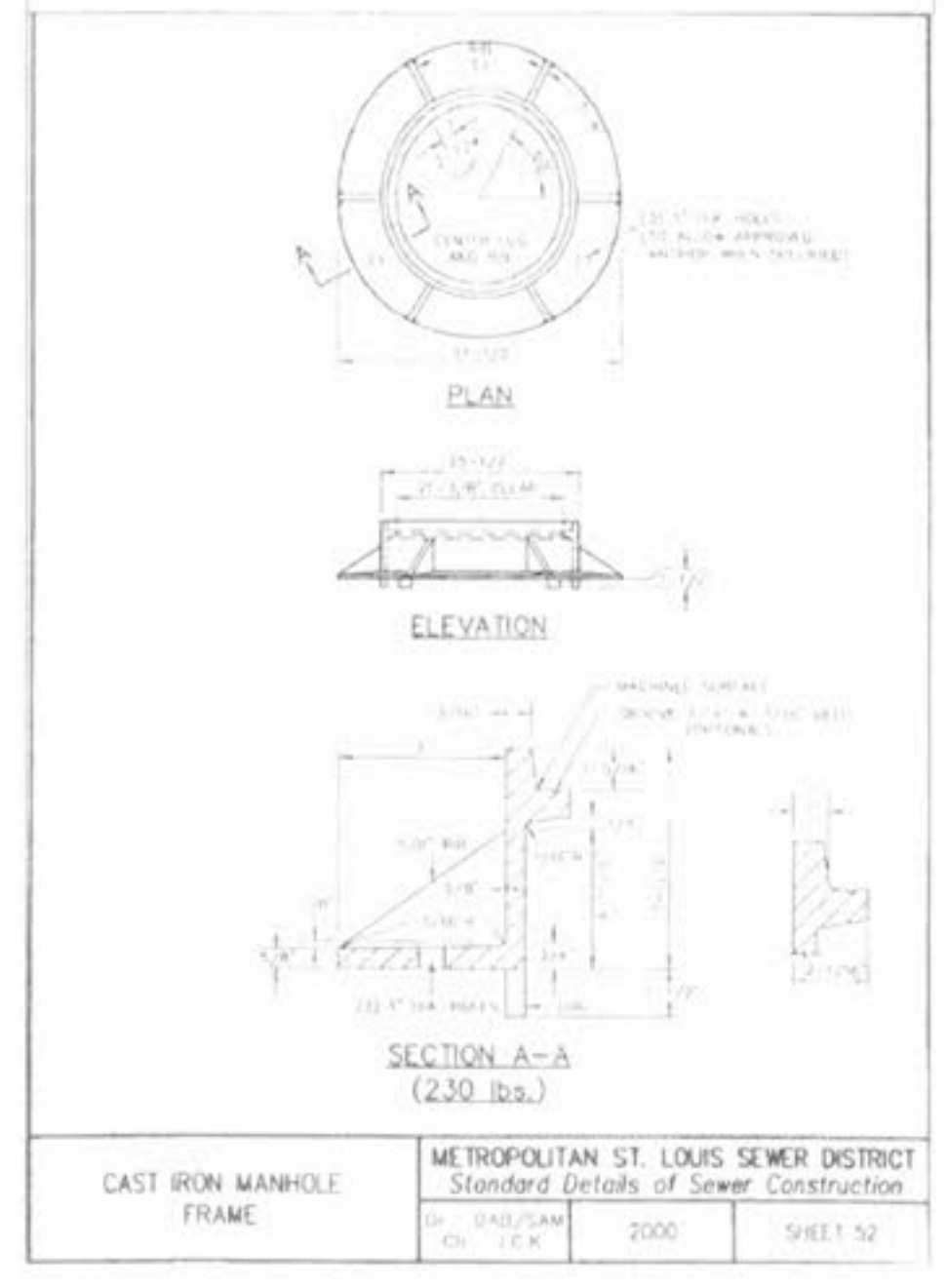
DETAIL OF STEEL GRATE	METROPOLITAN ST. LOUIS SEWER DISTRICT Standard Details of Sewer Construction	2000	SHEET 49
-----------------------	---	------	----------



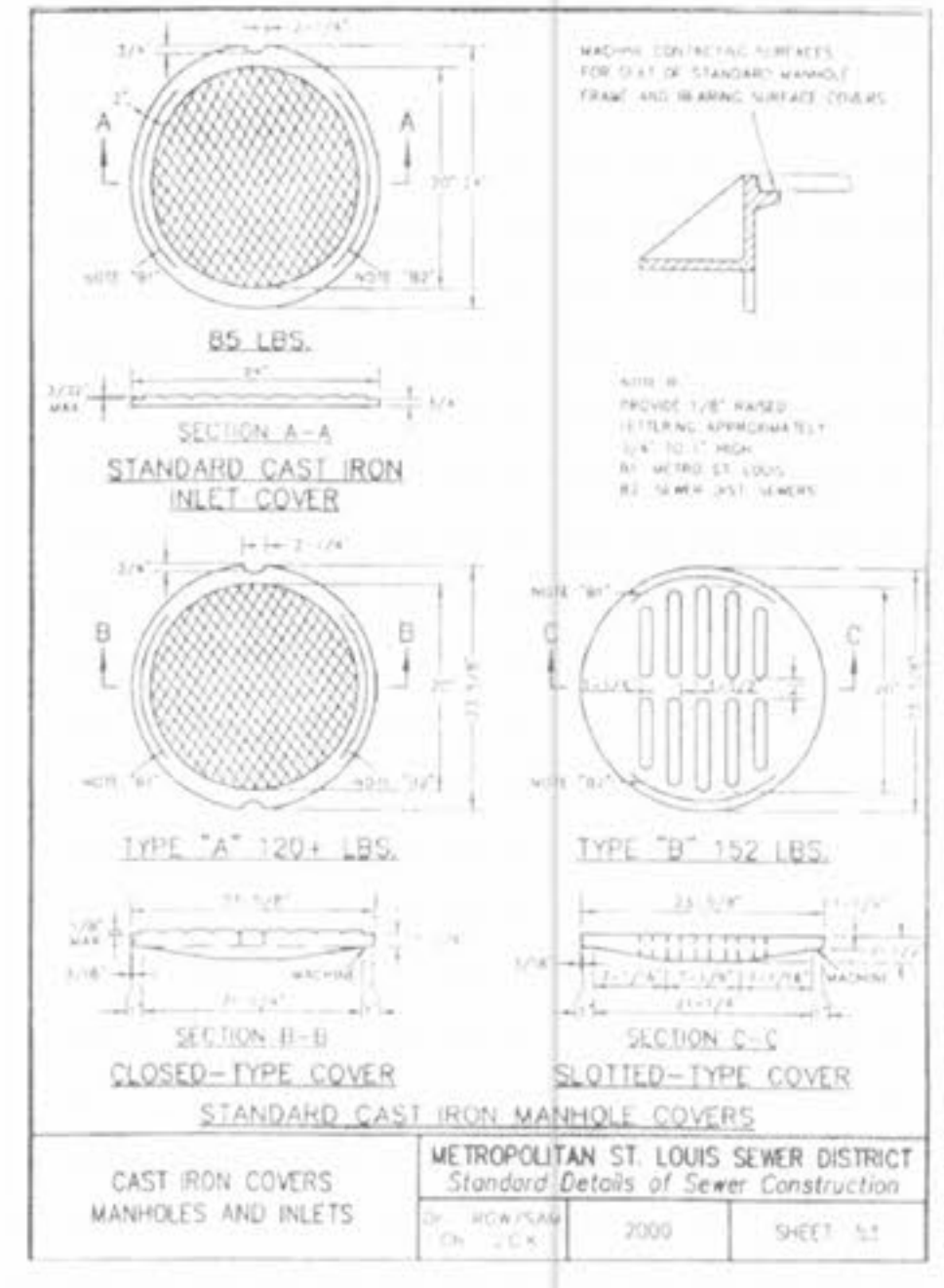
STEEL REQUIREMENTS FOR GRATE INLET SEAT	METROPOLITAN ST. LOUIS SEWER DISTRICT Standard Details of Sewer Construction	2000	SHEET 50
---	---	------	----------



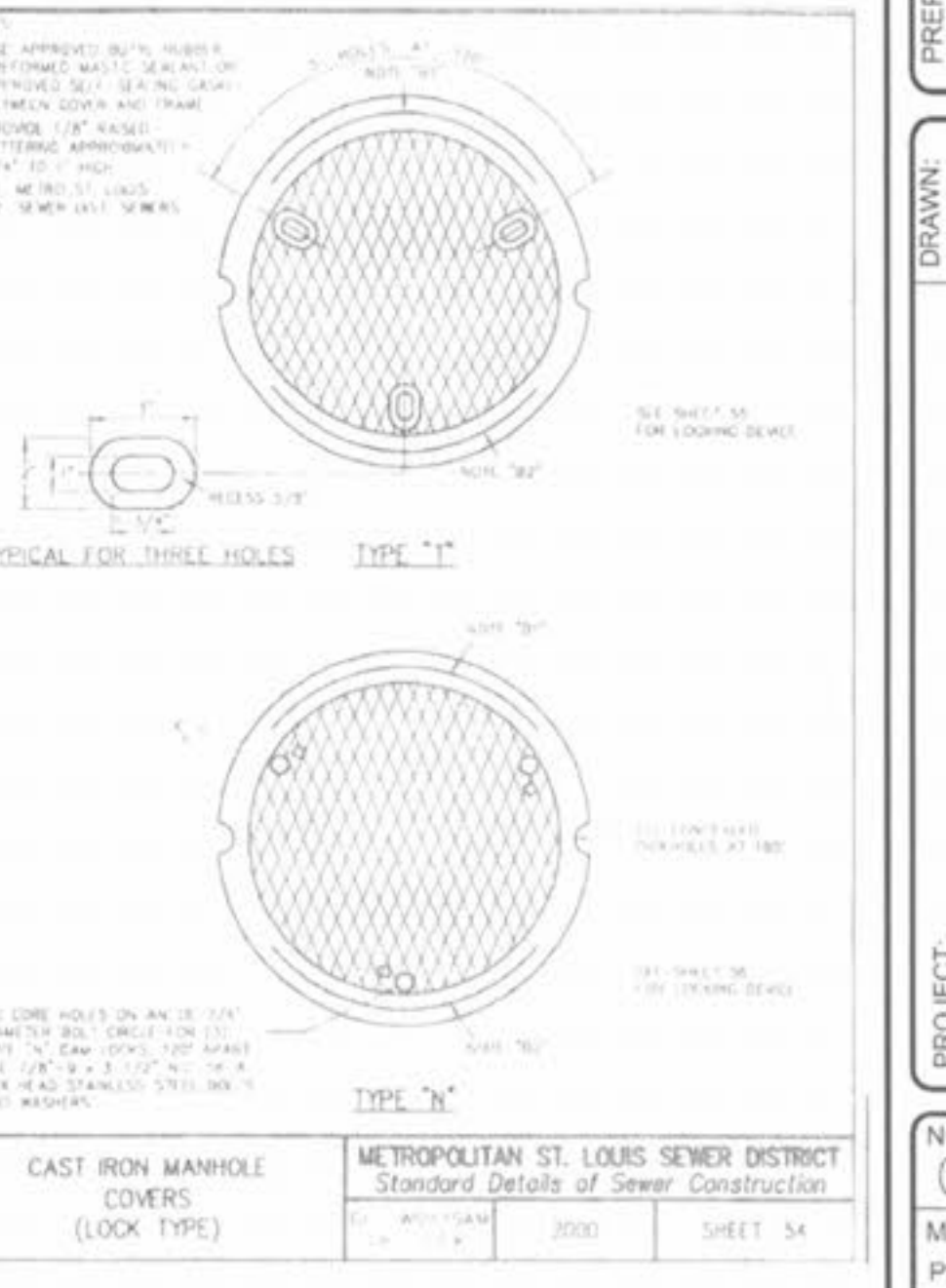
CAST IRON SIDE INTAKE UNIT FOR GRATED INLETS	METROPOLITAN ST. LOUIS SEWER DISTRICT Standard Details of Sewer Construction	2000	SHEET 51
--	---	------	----------



CAST IRON MANHOLE FRAME	METROPOLITAN ST. LOUIS SEWER DISTRICT Standard Details of Sewer Construction	2000	SHEET 52
-------------------------	---	------	----------



CAST IRON COVERS MANHOLES AND INLETS	METROPOLITAN ST. LOUIS SEWER DISTRICT Standard Details of Sewer Construction	2000	SHEET 53
--------------------------------------	---	------	----------



CAST IRON MANHOLE COVERS (LOCK TYPE)	METROPOLITAN ST. LOUIS SEWER DISTRICT Standard Details of Sewer Construction	2000	SHEET 54
--------------------------------------	---	------	----------

ISSUE	REMARKS/DATE
1	03-01-04 FIRST SUBMITTAL
2	06-15-04 REVISED PER CITY & DCSD COMMENTS
3	07-20-04 REVISED PER CITY COMMENTS
4	08-04-04 REVISED PER CITY COMMENTS
5	08-12-04 REVISED PER PWS&RZ COMMENTS

PREPARED FOR:  
**McBride & Son Homes Land Development, Inc.**  
#1 McBride & Son Center Drive  
Chesterfield, Missouri 63005  
(636) 537-2000



PREPARED BY:  
**THE STERLING CO.**  
ENGINEERS & SURVEYORS  
3605 NEW HAVEN GARDNER ROAD  
ST. LOUIS, MISSOURI 63120  
(314) 487-0440 FAX 487-8944  
E-Mail: Sterling@sterling-eng-sur.com

PROJECT:	NO. 03 06 147
DRAWN:	M.S.D.
DESIGNED:	SHEET
CHECKED:	P#
PROJECT TITLE:	DIGITAL FILE LOCATION SERVER=STERLING-2 E:\CD\proj.dwg
SHEET TITLE:	MSD CONSTRUCTION DETAILS
	CD5