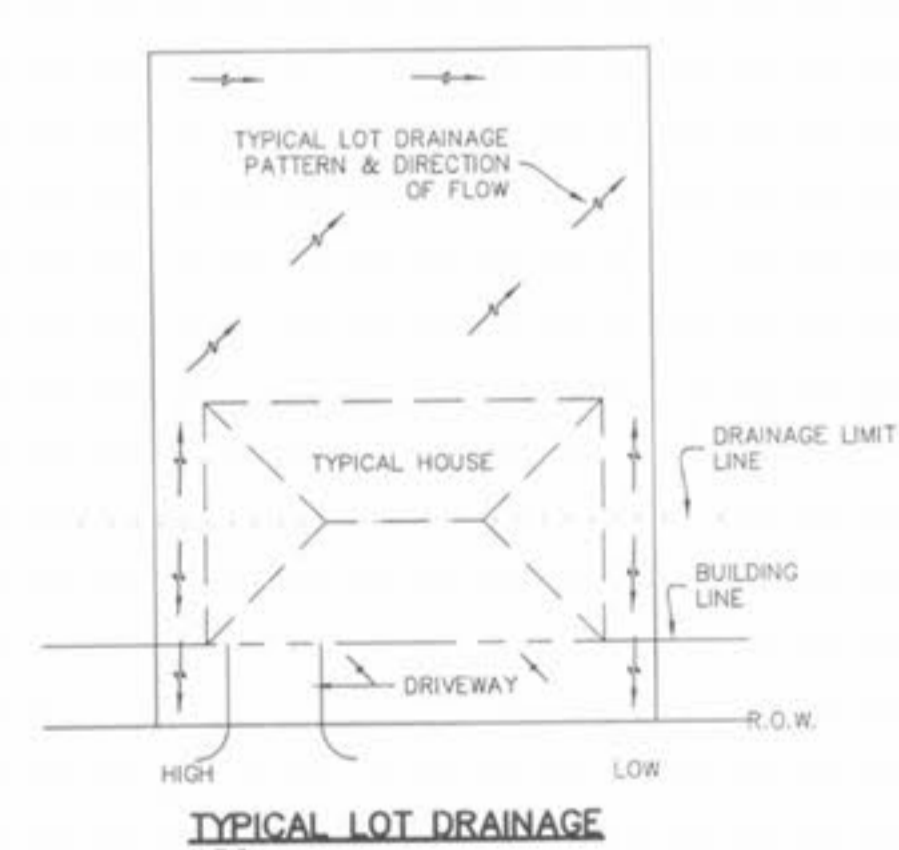
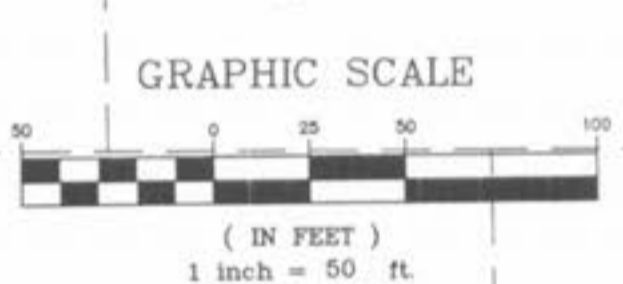
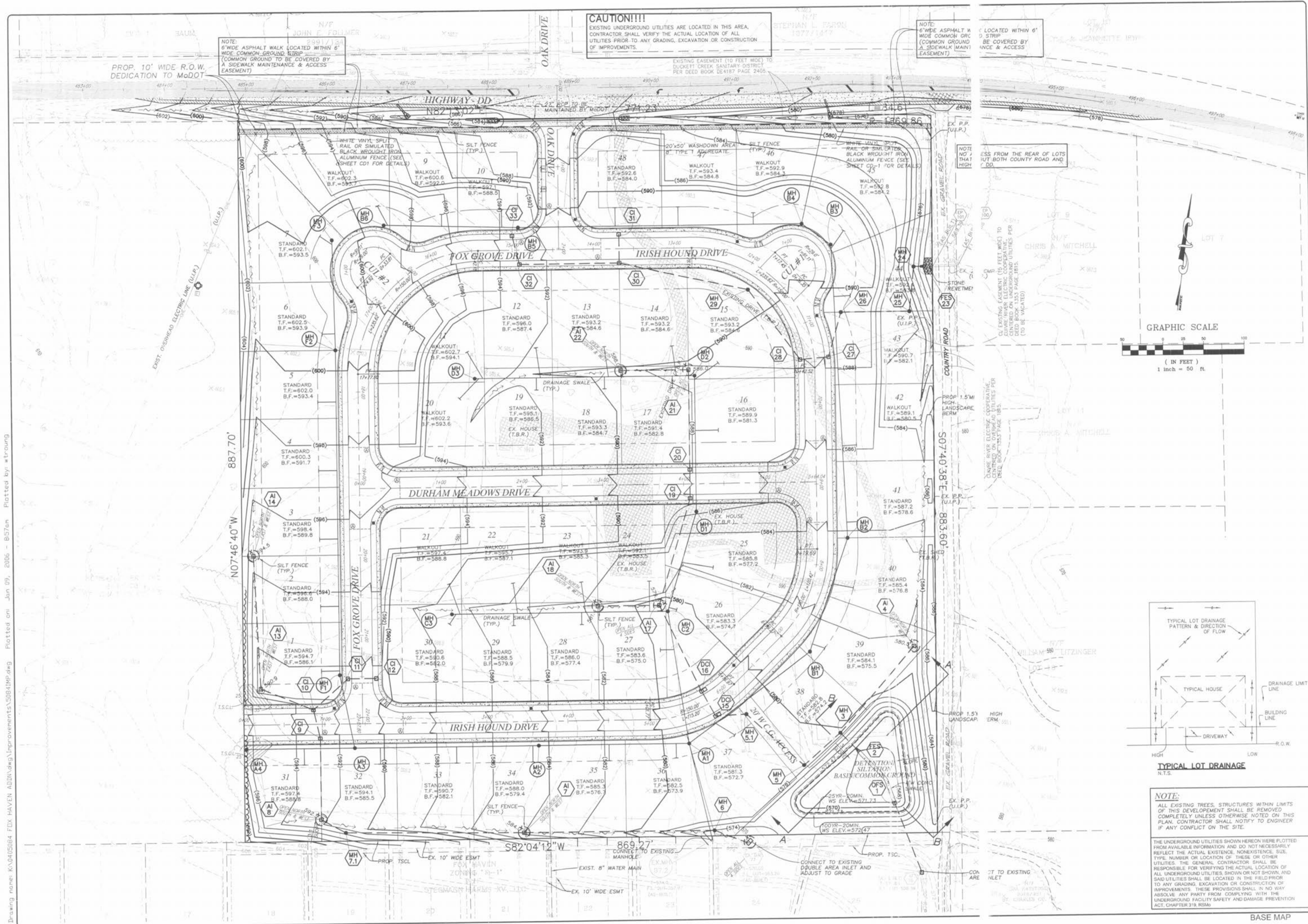


Drawing name: K:\04\05\084 FOX HAVEN ADD\dwg\improvements\00841MP.dwg Plotted on: Jan 09, 2006 - 8:57am Plotted by: wtroung



ISSUE REMARKS/DATE

1	REV PER DUCKETT CREEK SANI. DISTRICT 9-20-05
2	REV PER CITY AND WATER DISTRICT COMMENTS 9-29-05
3	REV PER DUCKETT CREEK SANI. DISTRICT 10-17-05
4	REV PER DUCKETT CREEK SANI. DISTRICT 10-24-05
5	REV PER PUBLIC WATER DISTRICT NO. 2 11-14-05
6	REV PER CITY OF FALLON, 12-29-05
7	REV PER CITY OF FALLON, 1-9-2006

PREPARED FOR:  
**McBride & Son Homes  
Land Development, Inc.**  
#1 McBride & Son Center Drive  
Chesterfield, MO. 63005  
636 537-2000



PREPARED BY:  
**THE STERLING CO.**  
**ENGINEERS & SURVEYORS**  
5055 NEW BALMGARTNER ROAD  
ST. LOUIS, MISSOURI 63129  
(314) 667-6400  
E-Mail: Sterling@sterling-eng-survey.com

PROJECT: **FOX HAVEN ADDITION**

DRAWN: \_\_\_\_\_ DESIGNED: \_\_\_\_\_ CHECKED: \_\_\_\_\_

SHEET TITLE: **GRADING PLAN**

NO.	04	05	084
M.S.D.			SHEET
PR		2	
DISTAL FILE LOCATION			OF
DATE PLOTTED: JAN 09 2006			15

BASE MAP