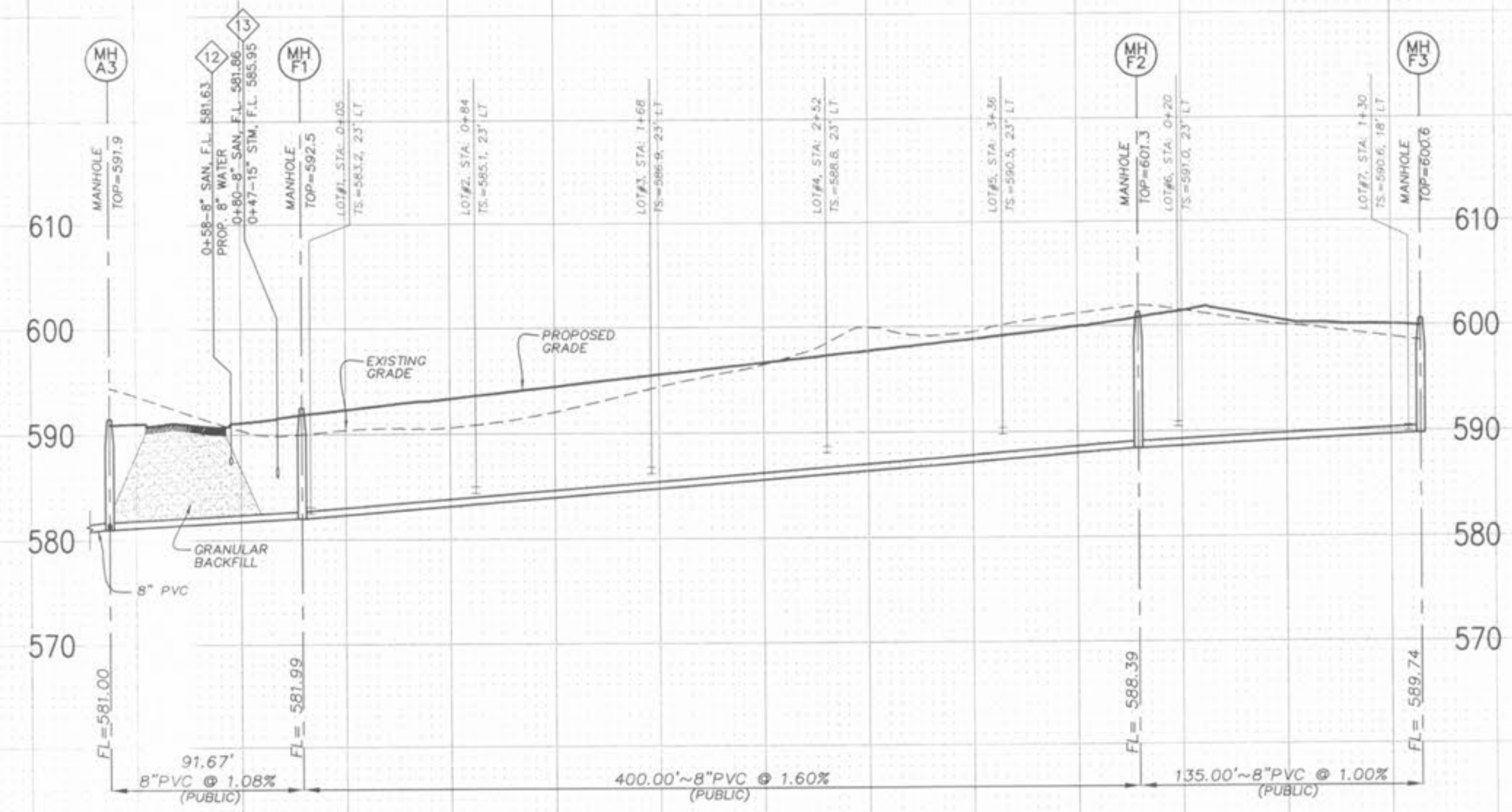
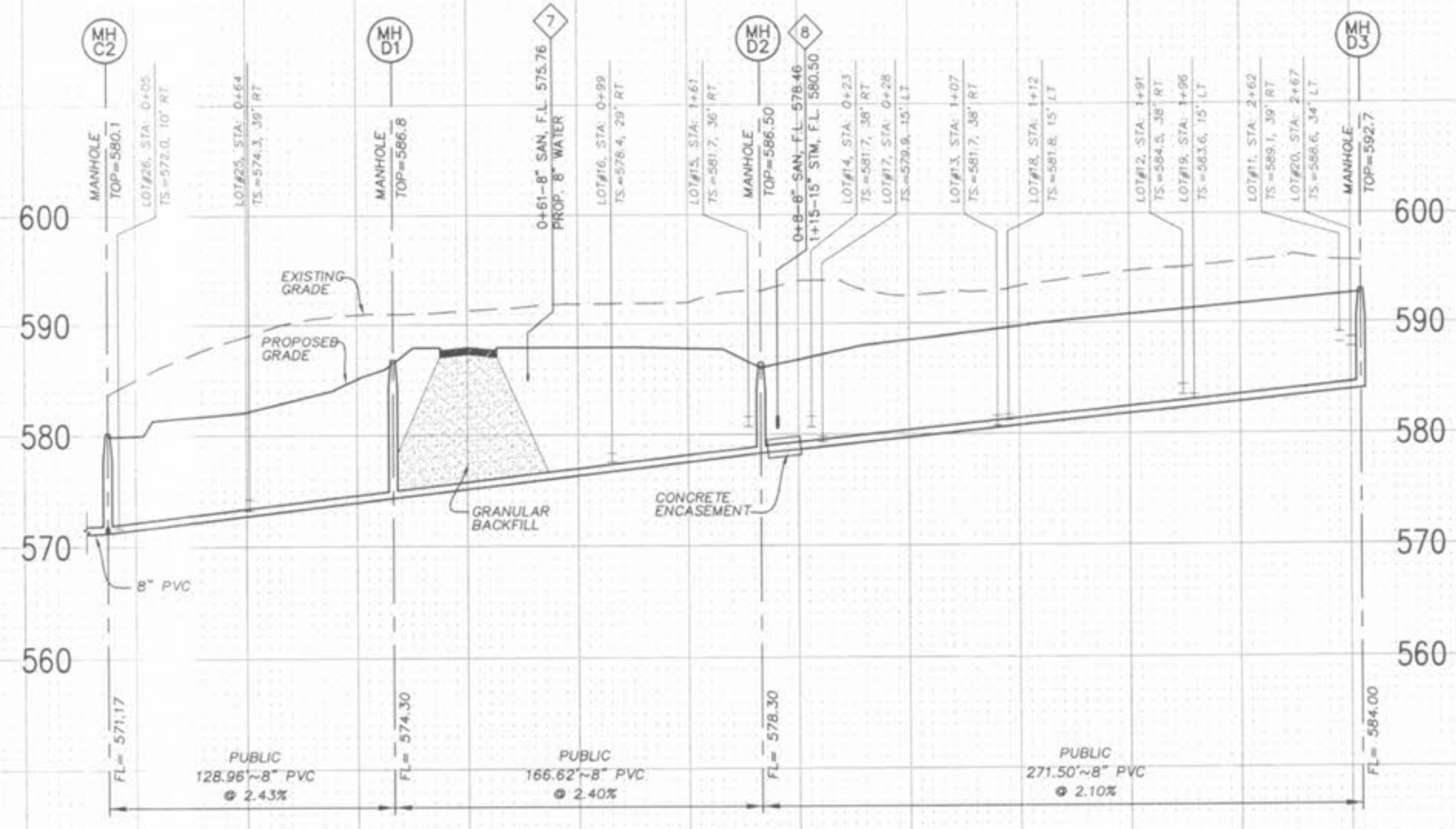


Drawing name: K:\0405084 FOX HAVEN ADDN\deg\Improvements\5084IMP.dwg Plotted on: Jan 06, 2006 - 11:06am Plotted by: wtroung



NOTE:  
SANITARY SEWER LATERALS SHALL BE 4" DIA. PVC  
@ 2% MIN. SLOPE.

SCALE:  
VERTICAL SCALE: 1"=10'  
HORIZONTAL SCALE: 1"=50'

ISSUE REMARKS/DATE

1	REV PER DUCKETT CREEK SANI. DISTRICT 9-20-05
2	REV PER CITY AND WATER DISTRICT COMMENTS 9-28-05
3	REV PER DUCKETT CREEK SANI. DISTRICT 10-17-05
4	REV PER DUCKETT CREEK SANI. DISTRICT 10-21-05
5	REV PER PUBLIC WATER DISTRICT NO. 2 11-14-05
6	REV PER CITY OF OFALLOON 12-22-05
7	REV PER CITY OF OFALLOON 1-9-2006

PREPARED FOR:  
**McBride & Son Homes  
Land Development, Inc.**  
#1 McBride & Son Center Drive  
Chesterfield, MO. 63005  
636 537-2000



PREPARED BY:  
**THE STERLING CO.**  
ENGINEERS & SURVEYORS  
5055 NEW BAUMGARTNER ROAD  
ST. LOUIS, MISSOURI 63129  
(314) 487-0440 FAX 487-8944  
E-Mail: Sterling@sterling-eng-sur.com

DRAWN: [ ]  
DESIGNED: [ ]  
CHECKED: [ ]

PROJECT:  
**FOX HAVEN  
ADDITION**  
SHEET TITLE: SANITARY SEWER PROFILES

NO.	04	05	084
M.S.D.			SHEET
P#		7	
DISTRICT FILE LOCATION	OF 15		

BASE MAP