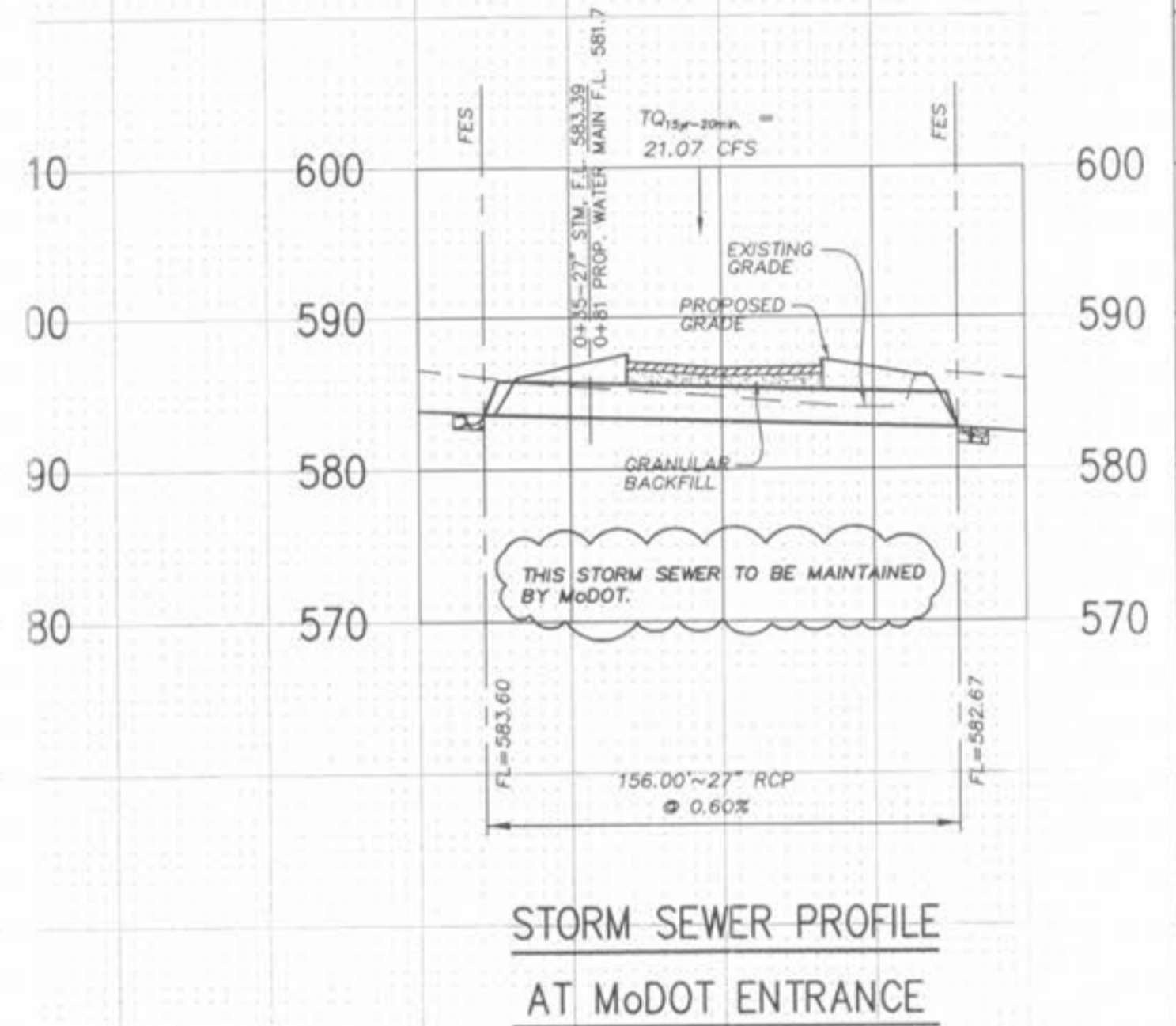
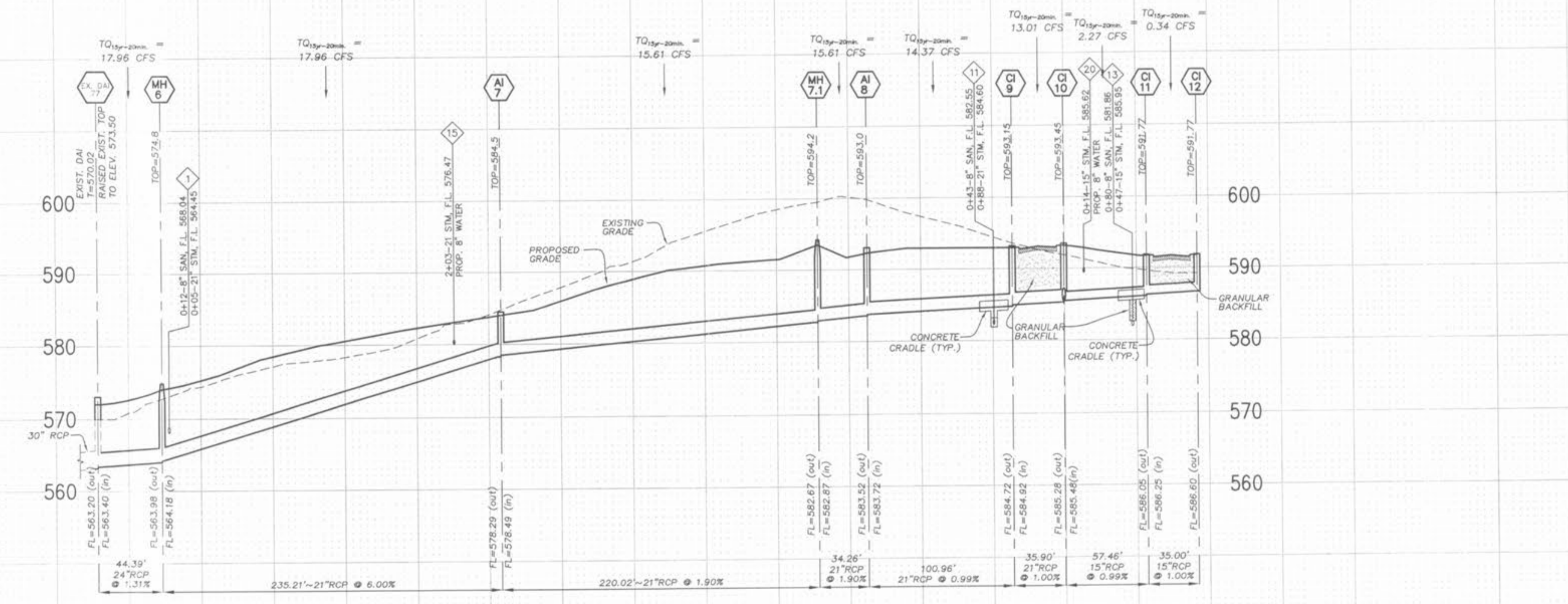
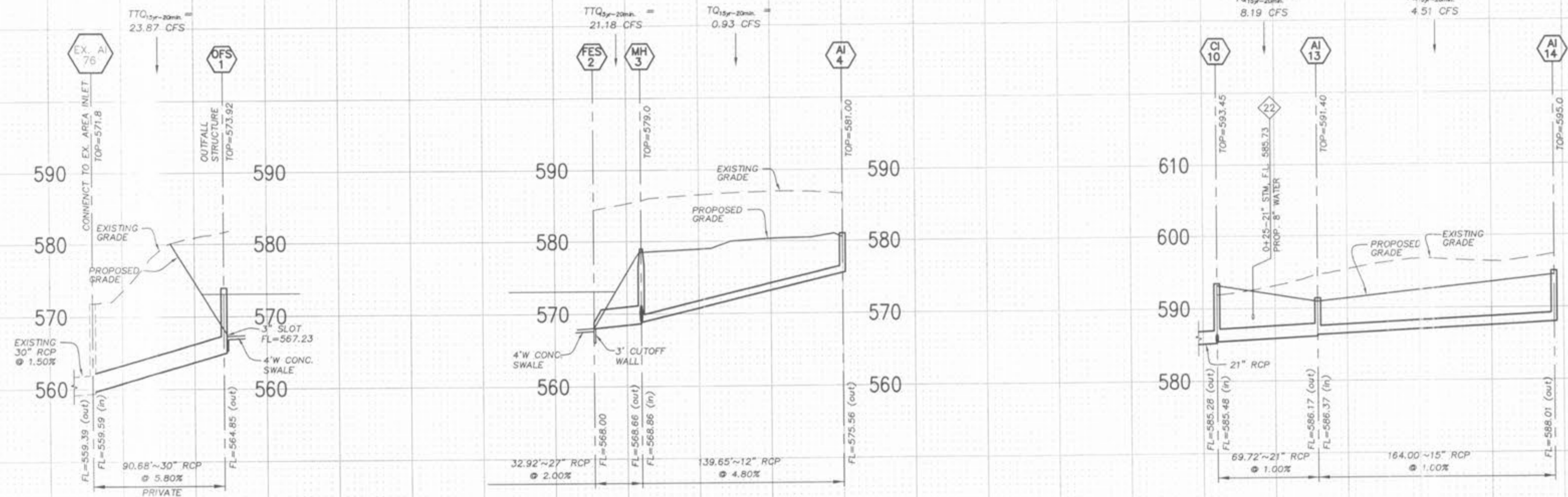


Drawing name: K:\0405084 FOX HAVEN ADDN\dwg\Improvements\5084IMP.dwg Plotted on: Jan 06, 2006 - 11:06am Plotted by: wtroung



SCALE:  
 VERTICAL SCALE: 1"=10'  
 HORIZONTAL SCALE: 1"=50'

ISSUE/REMARKS/DATE

1	REV PER DUCKETT CREEK SANI DISTRICT 9-20-05
2	REV PER CITY AND WATER DISTRICT COMMENTS 9-29-05
3	REV PER DUCKETT CREEK SANI DISTRICT 10-17-05
4	REV PER DUCKETT CREEK SANI DISTRICT 10-24-05
5	REV PER PUBLIC WATER DISTRICT NO. 2 11-14-05
6	REV PER CITY OF OFALLON 12-02-05
7	REV PER CITY OF OFALLON 1-5-2006

PREPARED FOR:

**McBride & Son Homes  
 Land Development, Inc.**  
 #1 McBride & Son Center Drive  
 Chesterfield, MO. 63005  
 636 537-2000

PREPARED BY:

**THE STERLING CO.**  
 ENGINEERS & SURVEYORS  
 5065 NEW BALMCASTNER ROAD  
 ST. LOUIS, MISSOURI 63129  
 (314) 487-0440 FAX 487-8944  
 E-Mail: Sterling@sterling-eng-sur.com

PROJECT:

**FOX HAVEN  
 ADDITION**

SHEET TITLE: STORM SEWER PROFILES

DRAWN: DESIGNED: CHECKED:

NO.	04	05	084
M.S.D.			SHEET
P#		8	
DIGITAL FILE LOCATION	K:\0405084 FOX HAVEN ADDN\DWG\Improvements\5084IMP.dwg		
DATE PLOTTED	1/6/2006 11:06 AM		
OF	15		

BASE MAP