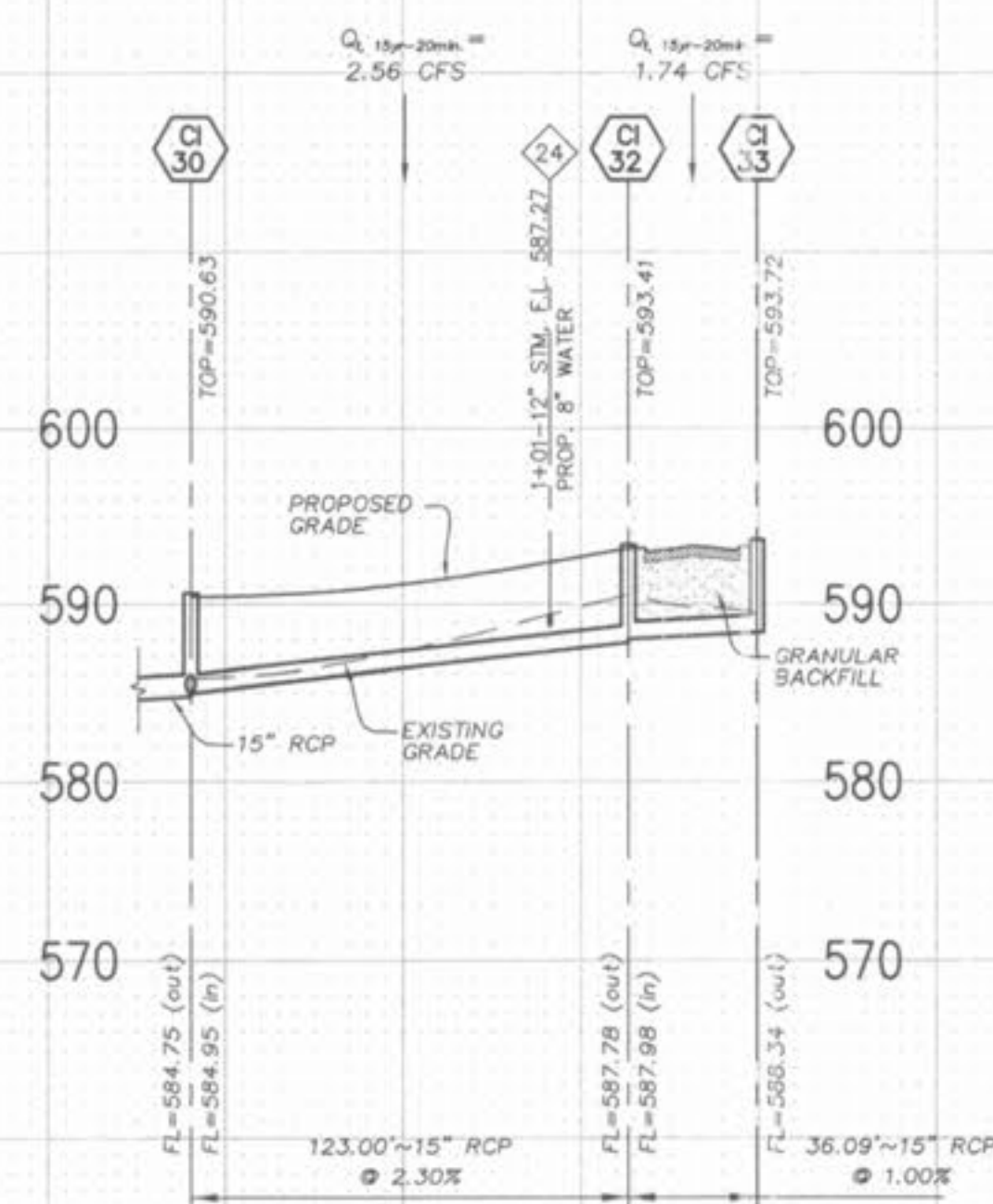
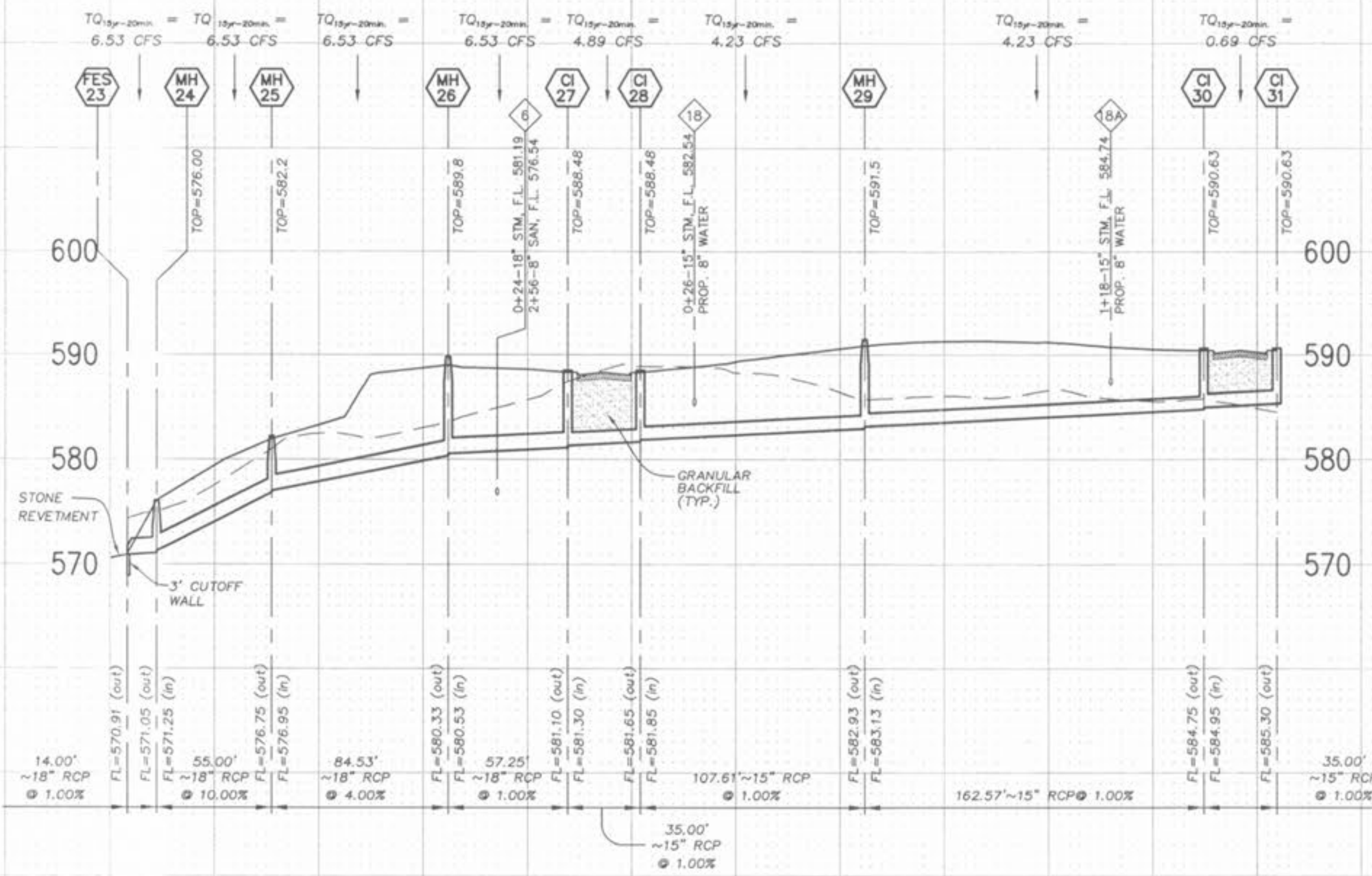
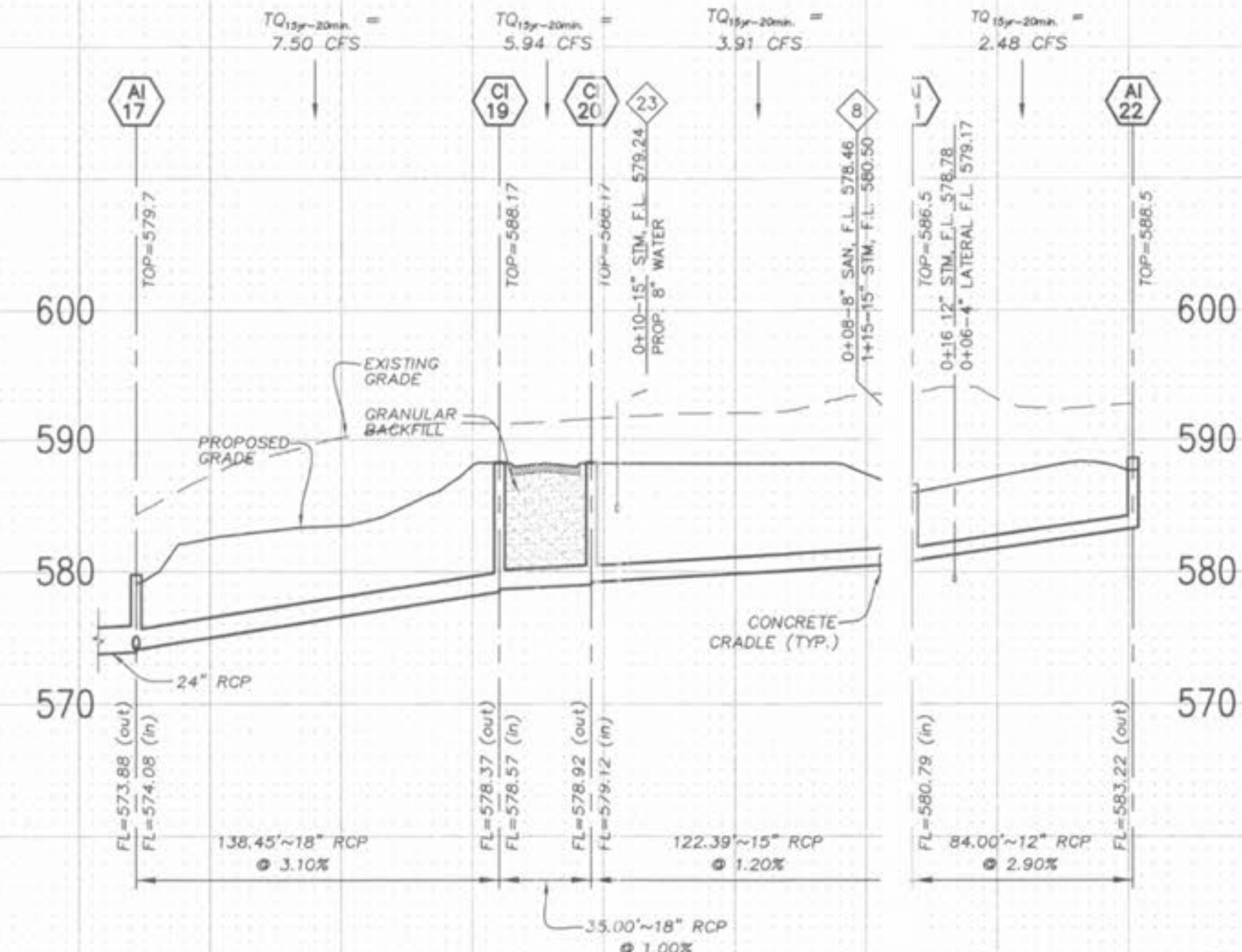
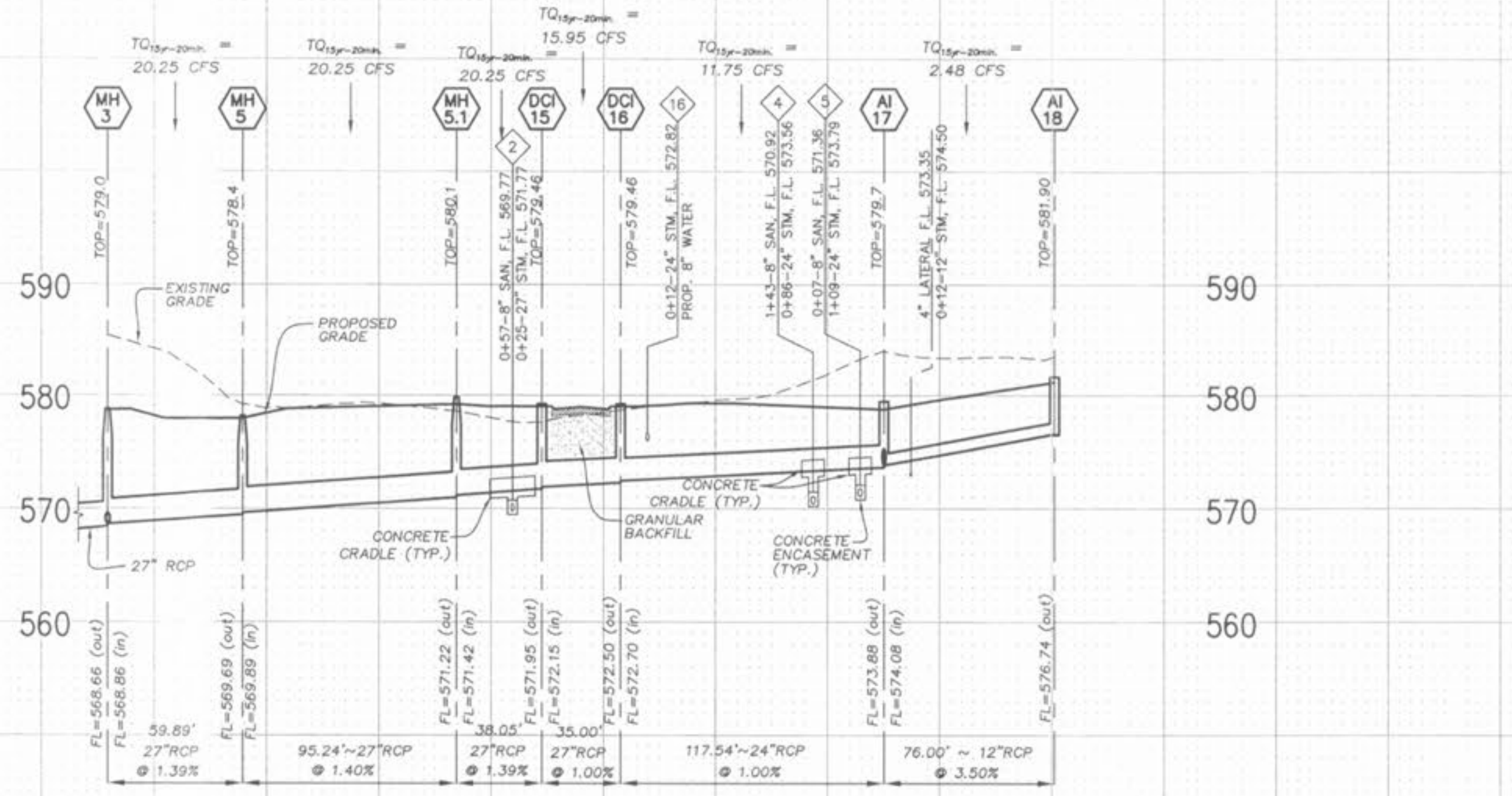


Drawing name: K:\0405084 FOX HAVEN ADDITION\Improvements\5084IMP.dwg Plotted on Jan 06, 2006 - 11:06am Plotted by: wtroung



SCALE:
 VERTICAL SCALE: 1"=10'
 HORIZONTAL SCALE: 1"=50'

BASE MAP

ISSUE	REMARKS/DATE
1	REV PER DUCKETT CREEK SANI. DISTRICT 9-20-05
2	REV PER CITY AND WATER DISTRICT COMMENTS 5-26-05
3	REV PER DUCKETT CREEK SANI. DISTRICT 10-17-05
4	REV PER PUBLIC WATER DISTRICT NO. 2 11-14-05
5	REV PER CITY OF FALLON, 12-02-05
6	REV PER CITY OF FALLON, 12-02-05
7	REV PER CITY OF FALLON, 1-9-2006

PREPARED FOR:
**McBride & Son Homes
 Land Development, Inc.**
 #1 McBride & Son Center Drive
 Chesterfield, MO. 63005
 636 537-2000



THE **STERLING** CO.
 ENGINEERS & SURVEYORS
 5055 NEW BAUMGARTNER ROAD
 ST. LOUIS, MISSOURI 63129
 (314) 487-0410 FAX: 487-8944
 E-Mail: Sterling@sterling-eng-survey.com

PROJECT:	FOX HAVEN ADDITION
DRAWN:	DESIGNED:
CHECKED:	
SHEET TITLE:	STORM SEWER PROFILES

NO.	04 05 084
M.S.D.	SHEET
PI	9
DIGITAL FILE LOCATION:	OF 15